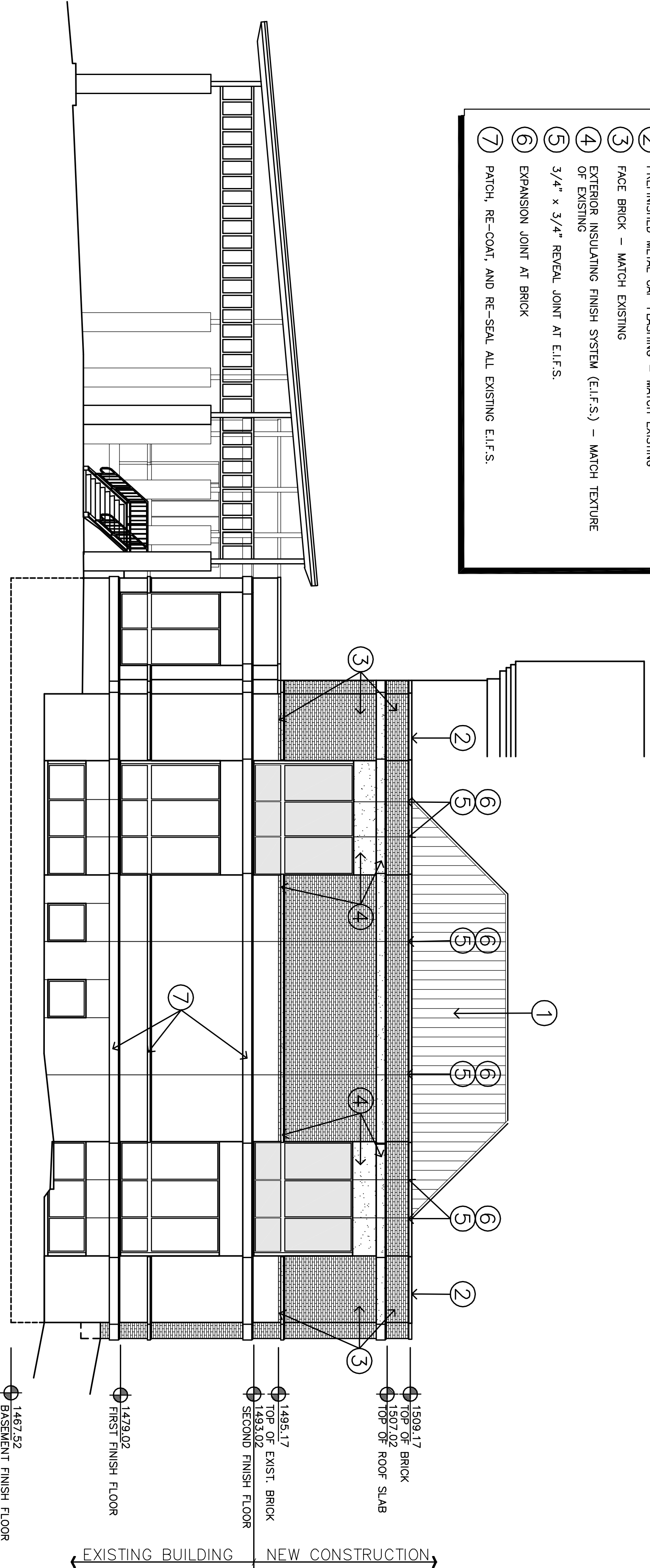
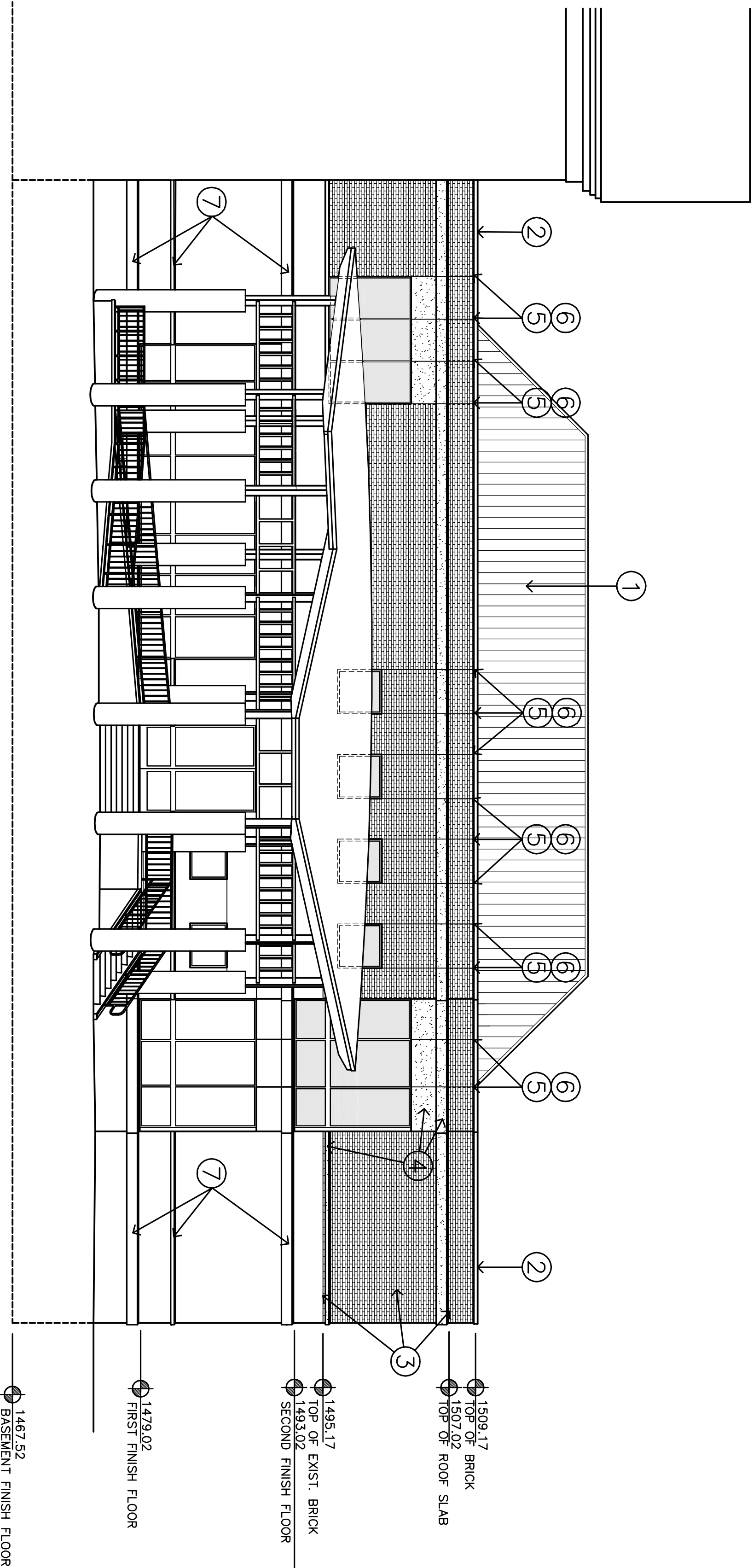


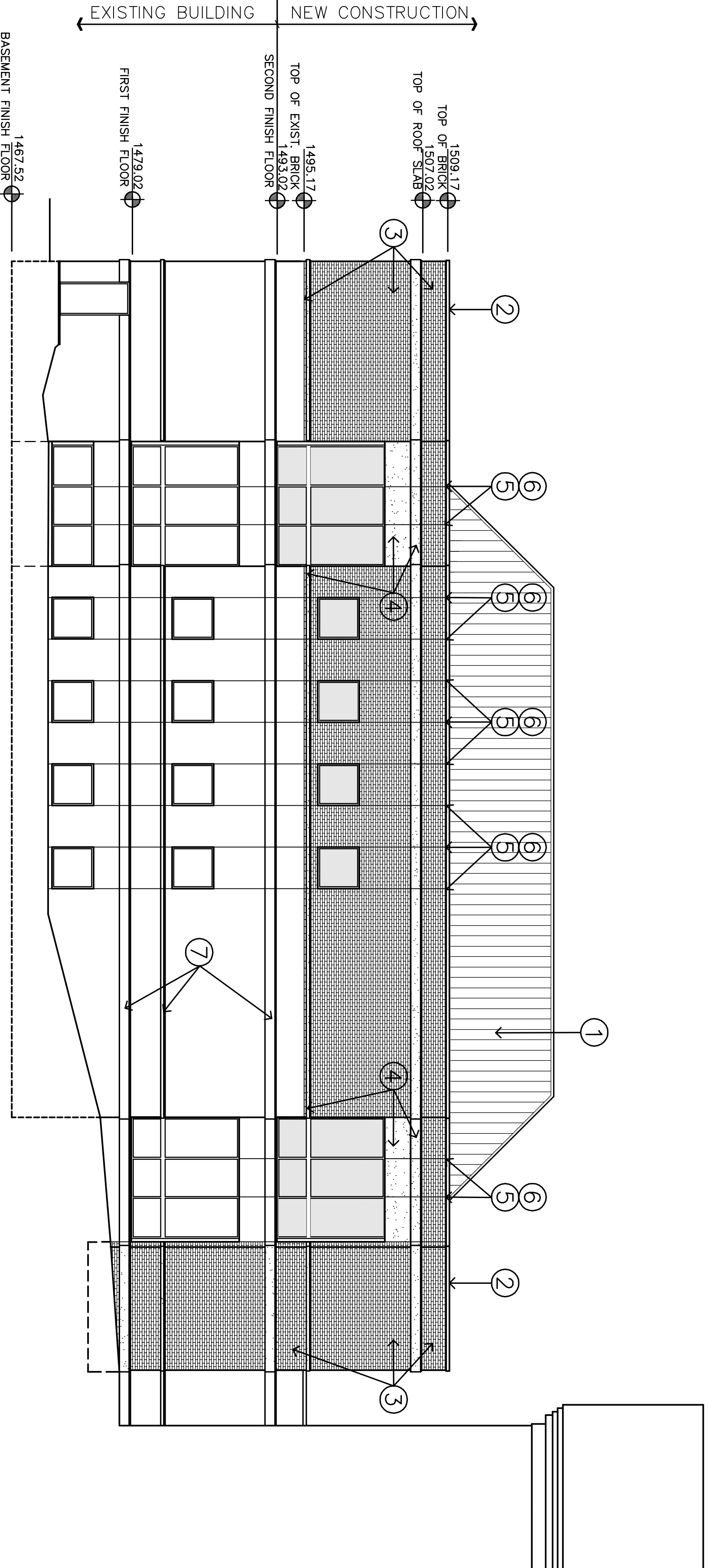
**4 WEST ELEVATION**  
REV: 2/A1.6, 1/A1.2, 1/A1.3



**2 EAST ELEVATION**  
REV: 2/A1.6, 1/A1.2, 1/A1.3



**3 SOUTH ELEVATION**  
REV: 2/A1.6, 1/A1.2, 1/A1.3



**1 NORTH ELEVATION**  
REV: 2/A1.6, 1/A1.2, 1/A1.3

- KEY NOTE LEGEND:**
- 1 RE-USE EXISTING STANDING SEAM SCREEN SYSTEM  
RE: D1.0 AND A1.3
  - 2 PREFINISHED METAL CAP FLASHING - MATCH EXISTING
  - 3 FACE BRICK - MATCH EXISTING
  - 4 EXTERIOR INSULATING FINISH SYSTEM (E.I.F.S.) - MATCH TEXTURE OF EXISTING
  - 5 3/4" x 3/4" REVEAL JOINT AT E.I.F.S.
  - 6 EXPANSION JOINT AT BRICK
  - 7 PATCH, RE-COAT, AND RE-SEAL ALL EXISTING E.I.F.S.

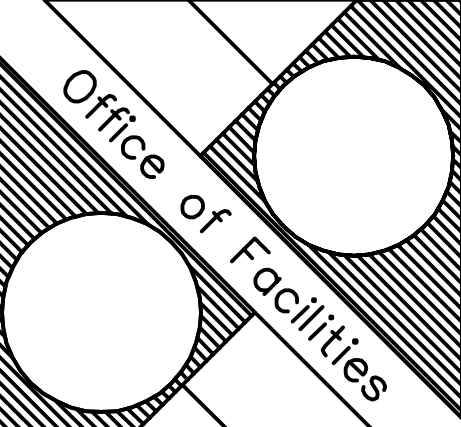
REVISIONS	DATE



**TACOGART**  
FOSTER-CLURE  
ARCHITECTS

APPROVED: MEDICAL CENTER DIRECTOR	APPROVED: FACILITY PLANNER	APPROVED: SERVICE CHIEF
APPROVED: ASSOCIATE DIRECTOR	APPROVED: CHIEF ENGINEER	APPROVED: SERVICE CHIEF
APPROVED: ASSISTANT DIRECTOR	APPROVED: SERVICE CHIEF	APPROVED: SERVICE CHIEF

DRAWING TITLE		DATE
ELEVATIONS		17 NOVEMBER 2000
PROJECT TITLE		PROJECT NUMBER
VETERAN'S ADMINISTRATION OUTPATIENT CARE FACILITY THIRD FLOOR ADDITION		82998
BUILDING NUMBER	CHECKED	DRAWN
--	TFCG-BG	TFCG-TD
LOCATION	DRAWING NO.	
FAYETTEVILLE, AR	<b>A2.0</b>	
Dwg. 9 of 43		



DEPARTMENT OF  
VETERANS AFFAIRS