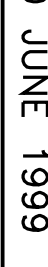


REVISIONS	
DATE	




APPROVED: MEDICAL CENTER DIRECTOR	APPROVED: FACILITY PLANNER	APPROVED: SERVICE CHIEF
APPROVED: ASSOCIATE DIRECTOR	APPROVED: CHIEF ENGINEER	APPROVED: SERVICE CHIEF
APPROVED: ASSISTANT DIRECTOR	APPROVED: SERVICE CHIEF	APPROVED: SERVICE CHIEF

DRAWING TITLE SECOND FLOOR POWER AND SYSTEMS PLAN		PROJECT TITLE VETERAN'S ADMINISTRATION OUTPATIENT CARE FACILITY SECOND FLOOR ADDITION		DATE 30 JUNE 1999
BUILDING NUMBER 1		CHECKED BRM	DRAWN BTM	PROJECT NUMBER 82998
LOCATION FAYETTEVILLE, AR		DRAWING NO. E1.4		
		Day 41 of 43		



Office of Facilities

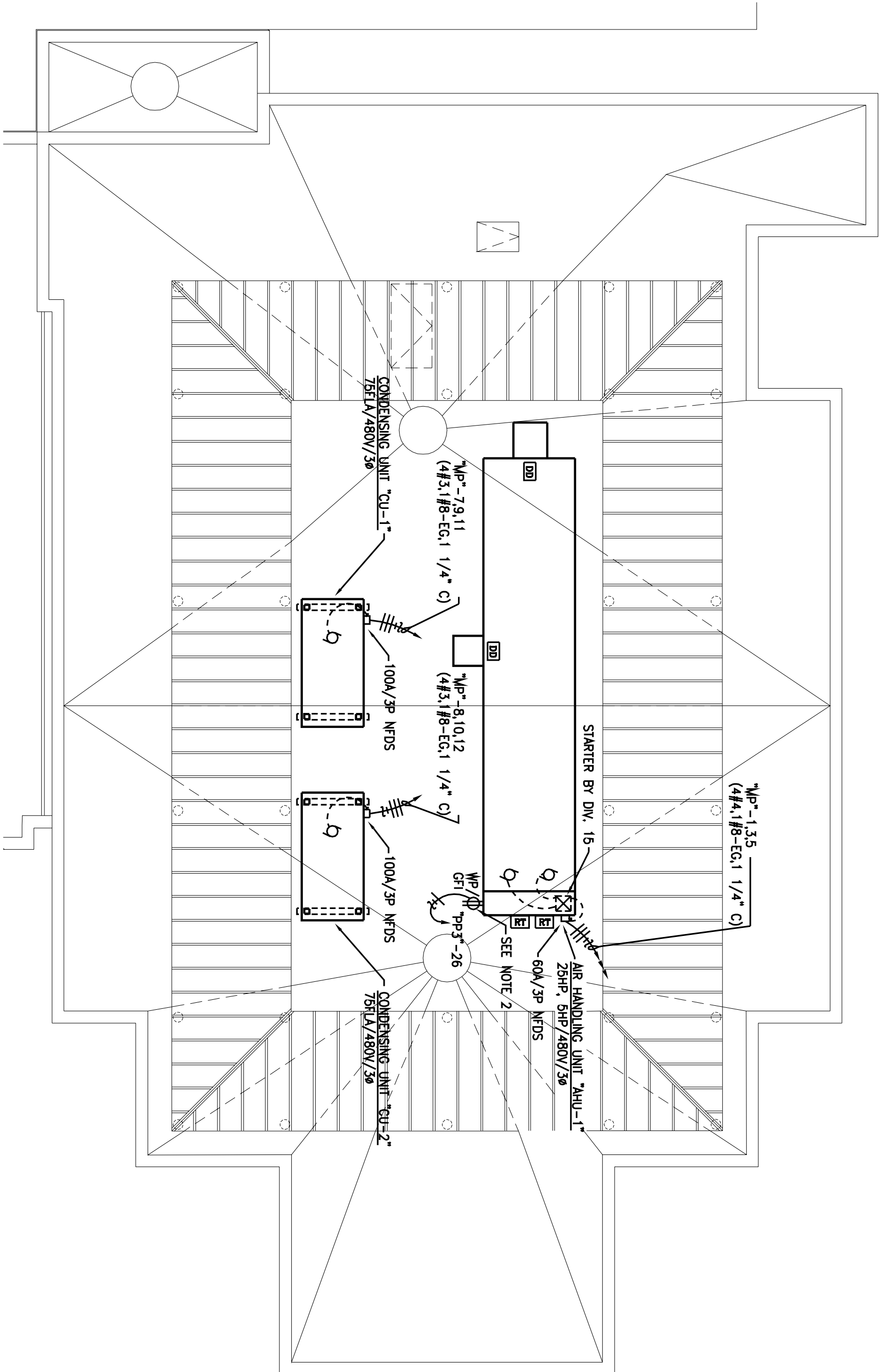


DEPARTMENT OF
VETERANS AFFAIRS

2 NEW ROOF PLAN ELECTRICAL
SCALE : 1/8" = 1'-0"
RE :

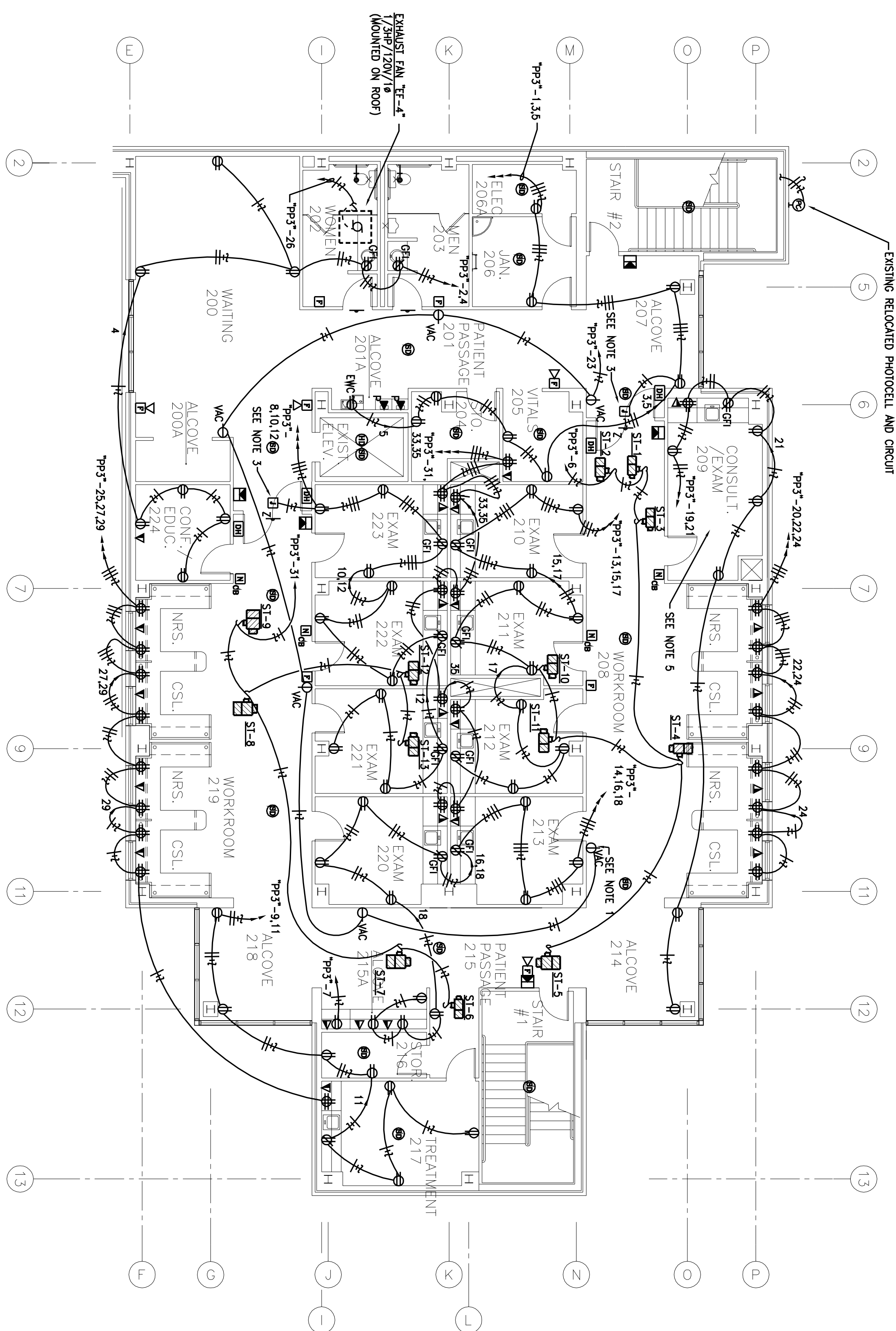
NOTE:

RELOCATE EXISTING LIGHTNING RODS FROM EXISTING FIRST FLOOR ROOF TO NEW SECOND FLOOR ROOF. EXTEND CABLES AS REQUIRED.



1 SECOND FLOOR POWER AND SYSTEMS PLAN

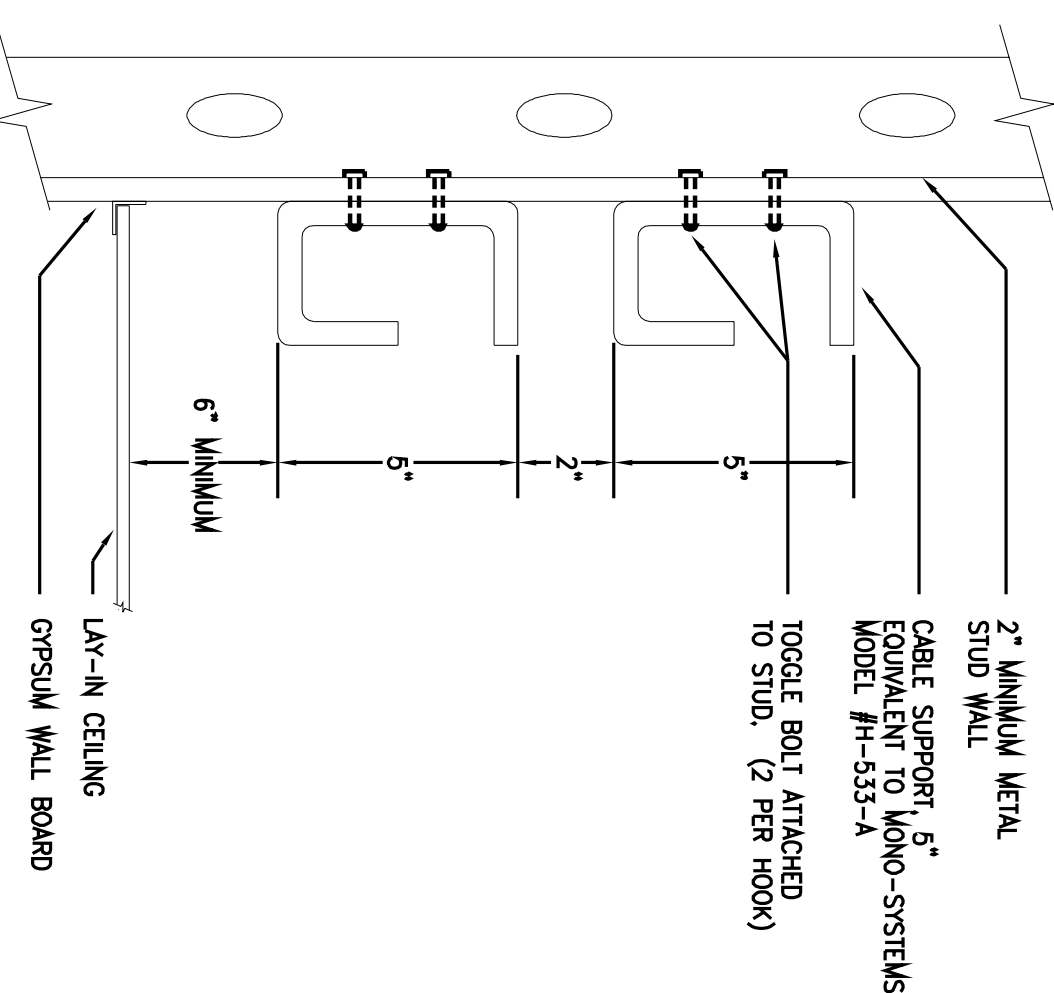
RE :



1. PROVIDE LABEL "VACUUM" ON COVER OF OUTLET-TYPICAL SHIELD.
2. MOUNT RECEPTACLE TO UNIT FRAMES AS REQUIRED. PROVIDE WEATHERPROOF COVER THAT PROVIDES WATERPROOF RAIN DRAIN USE.
3. POWER FOR AUTOMATIC DOOR OPENER PROVIDED BY ARCHITECT ELECTRICAL CONTRACTOR TO PROVIDE CORRECT WIRING AS NECESSARY. FIELD VERIFY EACH LOCATION OF ALL EQUIPMENT.
4. PROVIDE CABLE SUPPORTS AS DIRECTED ON THIS SHEET. 10' ON CENTERS ON ONE SIDE OF ALL CORRIDOR WALLS.
5. ROOM RECEPTACLE CIRCUITS SHALL ORIGINATE FROM JUNCTION BOX MOUNTED IN CENTER OF ROOM ABOVE AN ACCESSIBLE CEILING-TYPICAL ALL ROOMS.

3 CABLE SUPPORT DETAIL

SCALE : NONE



4 1/4" SCALE ELECTRIC ROOM PLAN

