

**DEMOLITION LEGEND**

--- EXISTING DUCTWORK AND EQUIPMENT TO BE REMOVED

--- EXISTING EQUIPMENT TO REMAIN

--- EXISTING DUCTWORK TO REMAIN

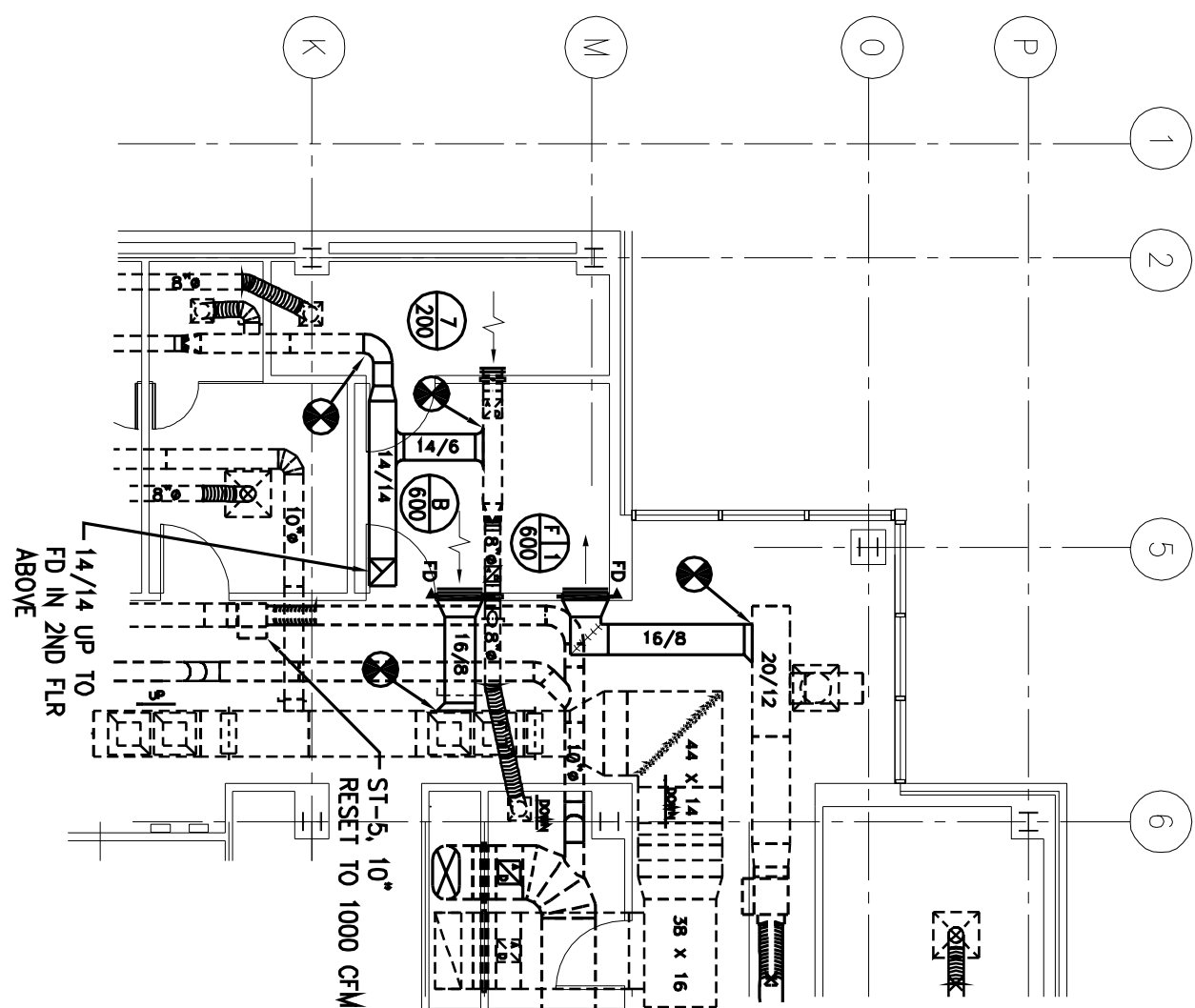
◆ TERMINATION OF DEMOLITION

- 1 REMOVE EXISTING EXHAUST FAN, DUCTWORK, AND WALL LOWER
- 2 REMOVE EXISTING EXHAUST CHIMNEY AND PATCH DUCTWORK.
- 3 REMOVE EXISTING 16" CEILING DIFFUSER AND BRANCH TAP. CAP MAIN DUCT & REPAIR INSULATION.

## 2 FIRST FLOOR HVAC DEMOLITION PARTIAL PLAN

SCALE : 1/8" = 1'-0"

RE : 1



**CONSTRUCTION LEGEND**

--- NEW LOW PRESSURE DUCTWORK

--- EXISTING EQUIPMENT TO REMAIN

--- EXISTING DUCTWORK TO REMAIN

◆ POINT OF CONNECTION BETWEEN NEW AND EXISTING

