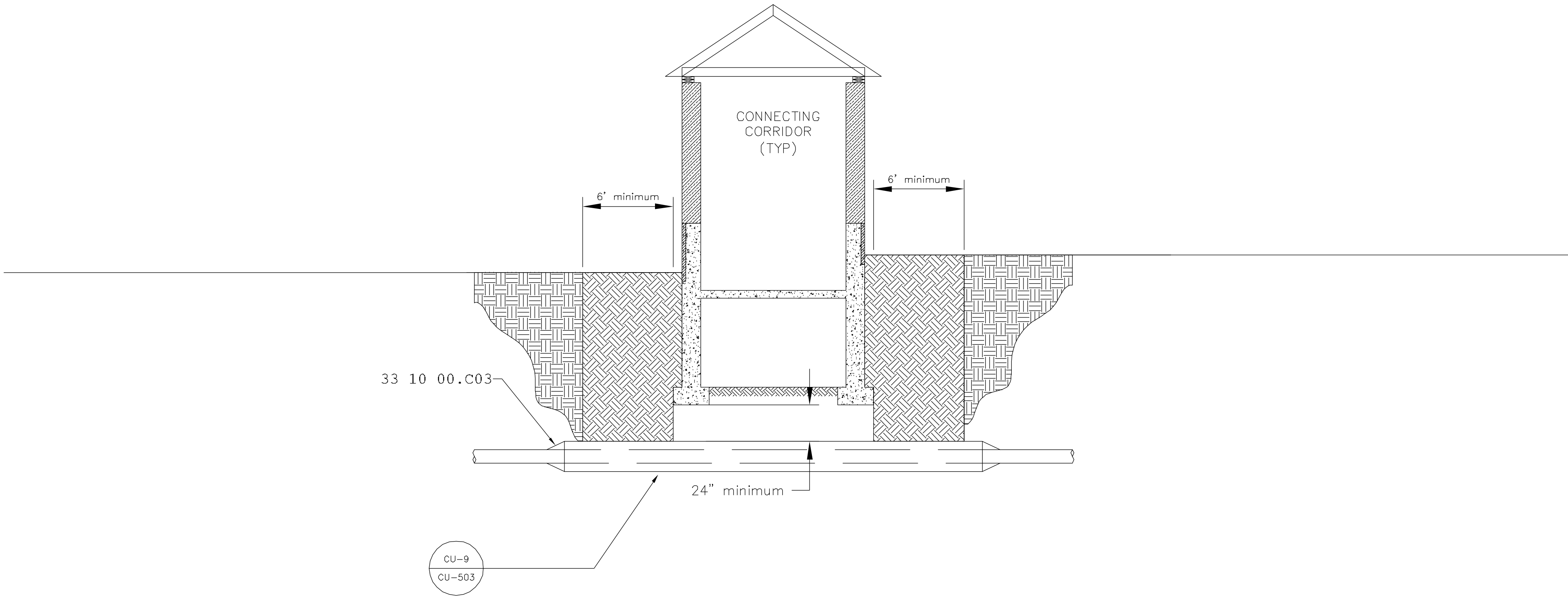
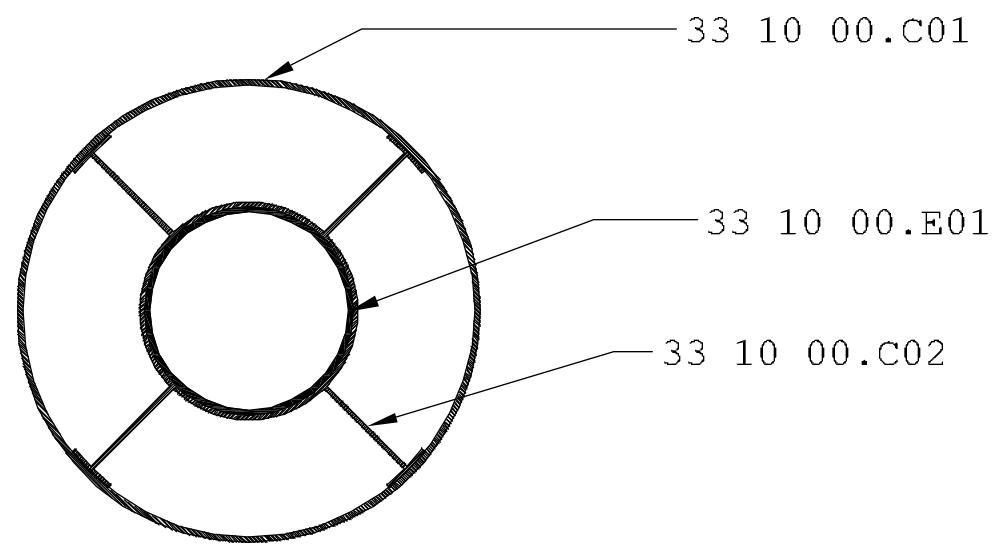


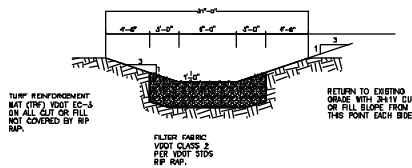
three inches = one foot
one and one-half inches = one foot
one inch = one foot
three-quarters inch = one foot
one-half inch = one foot
three-eighths inch = one foot
one-quarter inch = one foot
one-eighth inch = one foot



CU-10
CU-503
BORE SECTION UNDER CONNECTING CORRIDORS
NTS

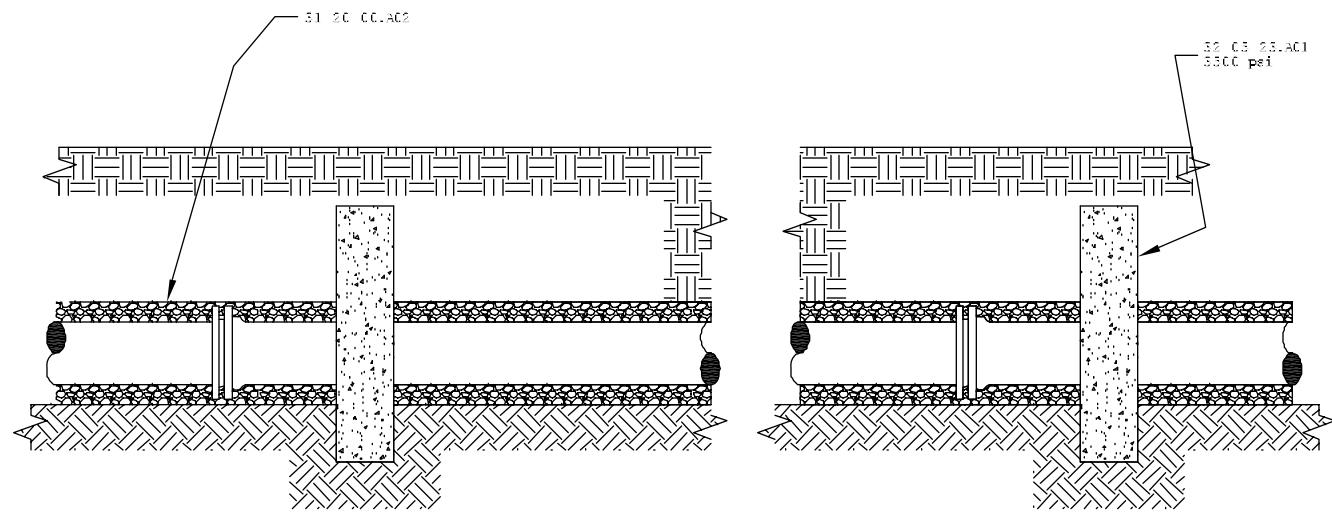


NOMINAL PIPE SIZE	MINIMUM CASING SIZE (INCHES)	MINIMUM CASING THICKNESS (INCHES)
4	14	0.250
6	16	0.281
8	18	0.312
10	20	0.375
12	24	0.375
14	26	0.438
16	30	0.469
18	32	0.500
20	36	0.532
24	42	0.625
30	48	0.688
36	54	0.781

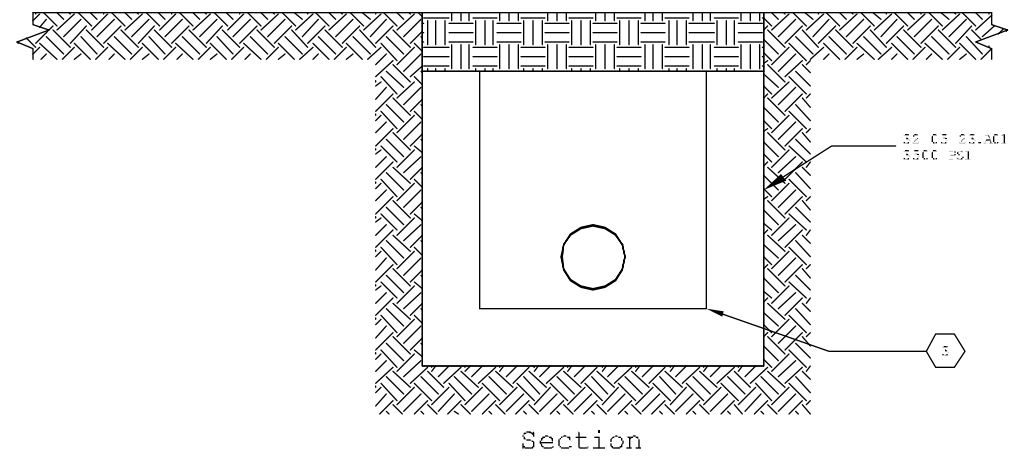


- REFERENCE KEYNOTES
- 31 20 00.A01 DRAINAGE FILL
 - 31 20 00.A02 PIPE BEDDING
 - 31 20 00.A04 GEOTEXTILE
 - 33 10 00.B02 GATE VALVE
 - 33 10 00.B03 VALVE BOX
 - 33 10 00.C01 BORE CASING PIPE
 - 33 10 00.C02 CASING SPACER (SPIDER)
 - 33 10 00.C03 CASING END SEAL
 - 33 10 00.E01 DUCTILE IRON PIPE, MECHANICAL JOINT

- SHEET KEYNOTES
- Safety breakable flange stem and sleeve.
 - Pipe size and type according to plan.



Elevation



Section

ANTI-SEEPAGE COLLAR
N.T.S

			Approved: Energy Engineer	Approved: Safety Manager	Approved: Service Chief	Drawing Title: CU-502 CIVIL DETAILS AND ELEVATIONS	Project Title INSTALL STORM WATER OVERFLOW	Date 07/27/12		
				Approved: Infection Control Officer	Approved: Chief of Staff			Project No. 658-12-107		
				Approved: GEMS Coordinator	Approved: Associate Director	Approved: Chief of Engineering Svc.	Building Number 8A	Checked WGJ	Drawn WBJ	DRAWING NO. 2556
						Approved: Medical Center Director	Location			Dwg. 8 Of 9
Revisions	Date									