

A

B

C

D

E

F

G

A

B

C

D

E

F

G

0 3 6
Three inches = one foot

0 6 9
One and one half inches = one foot

0 3 6
One inch = one foot

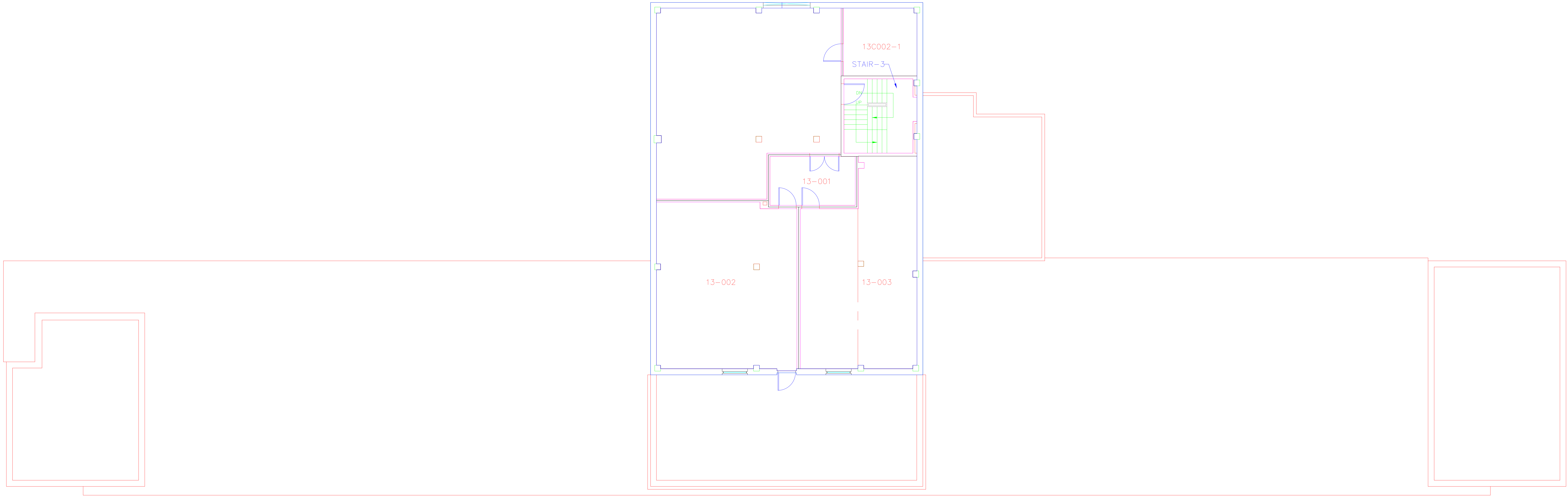
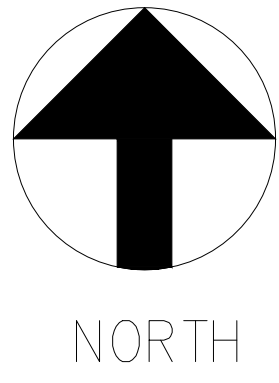
0 3 6
Three quarters inch = one foot

0 3 6
One half inch = one foot

0 3 6
Three eighths inch = one foot

0 3 6
One quarter inch = one foot

0 3 6
One eighth inch = one foot



			<div><div><div>i</div></div><div>Indus Systems, Inc. 2352, Main Street, Concord MA 01742 Tel: 978-461-0555 www.indus-systems.com</div></div>	Drawing Title THIRTEENTH FLOOR PLAN ARCHITECTURAL	Project Title AS-BUILT Drawings		Date 10-25-2010	<div><div><div></div></div><div>VAMC, WILKES BARRE</div><div><div></div></div></div> <div>VAMC, WILKES BARRE</div> <div>VADepartment of Veterans Affairs</div>	
				Approved:	Building Number 01	Checked	Drawn		Project No.
				Approved:	Location VAMC, WILKES BARRE PENNSYLVANIA		Drawing No.		
Revisions	Date	Professional Seal							