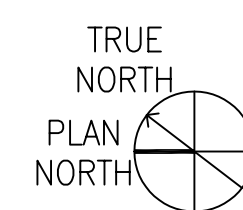
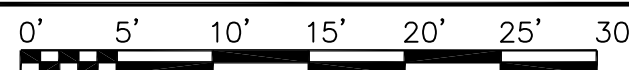


NOTES

1. LOCATE AND PROTECT ALL UTILITIES DURING CONSTRUCTION

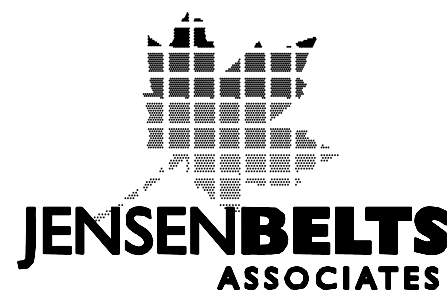
L1 SURFACE DEMOLITION PLAN  
SCALE: 1" = 10'



FINAL SET

METRIC CONVERSION FACTOR:  
1" = 25.4mm  
1'-0" = 304.8mm

REVISIONS	DATE



Site Planning / Landscape Architecture  
495 Main Street, Boise, Idaho 83702  
Ph: (208) 343-7175, Fx: (208) 343-7178



ZGA ARCHITECTS & PLANNERS, CHARTERED

408 E. Parkcenter Blvd., Suite 205 | Boise, Idaho 83706 | t: (208) 345.8872 | f: (208) 343.7182 | www.zga.com



CAD FILE NAME:  
531CSI102\_L1.dwg  
XREF FILE NAME:  
x\Abord.dwg  
531CSI102xSITE.dwg

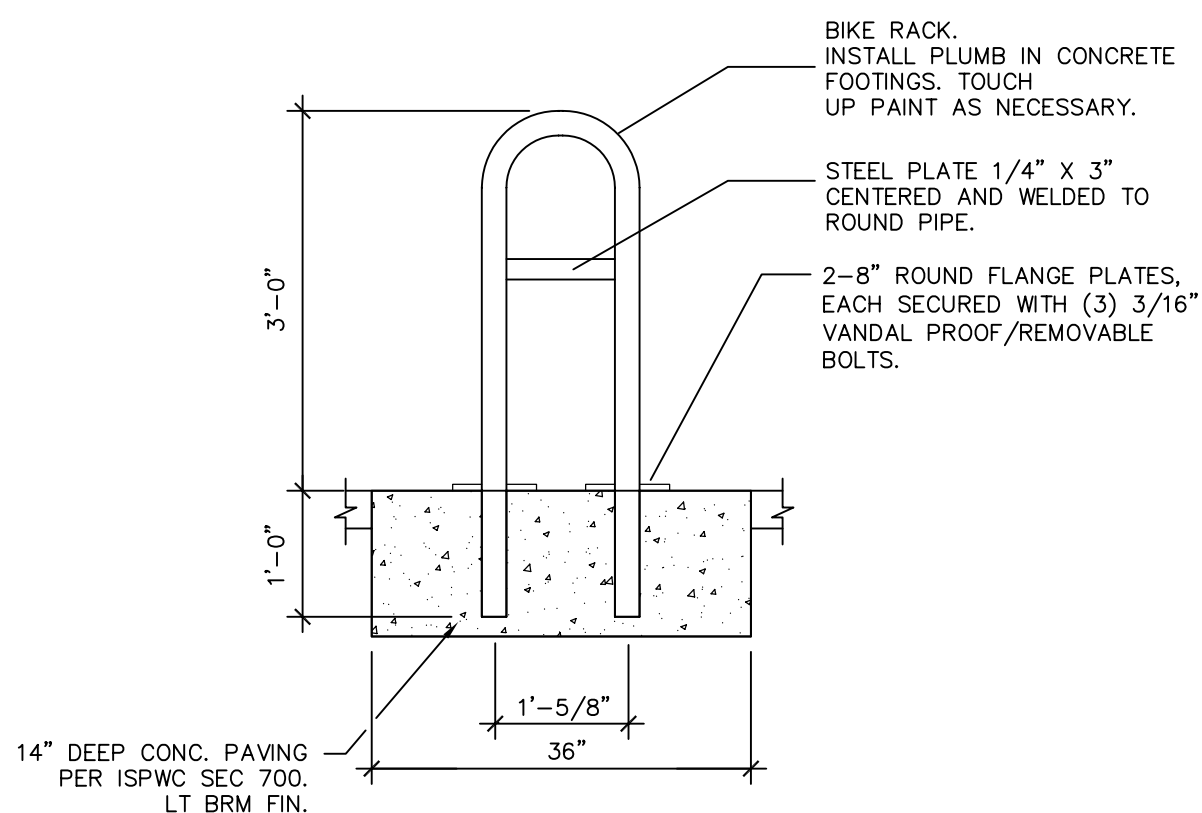
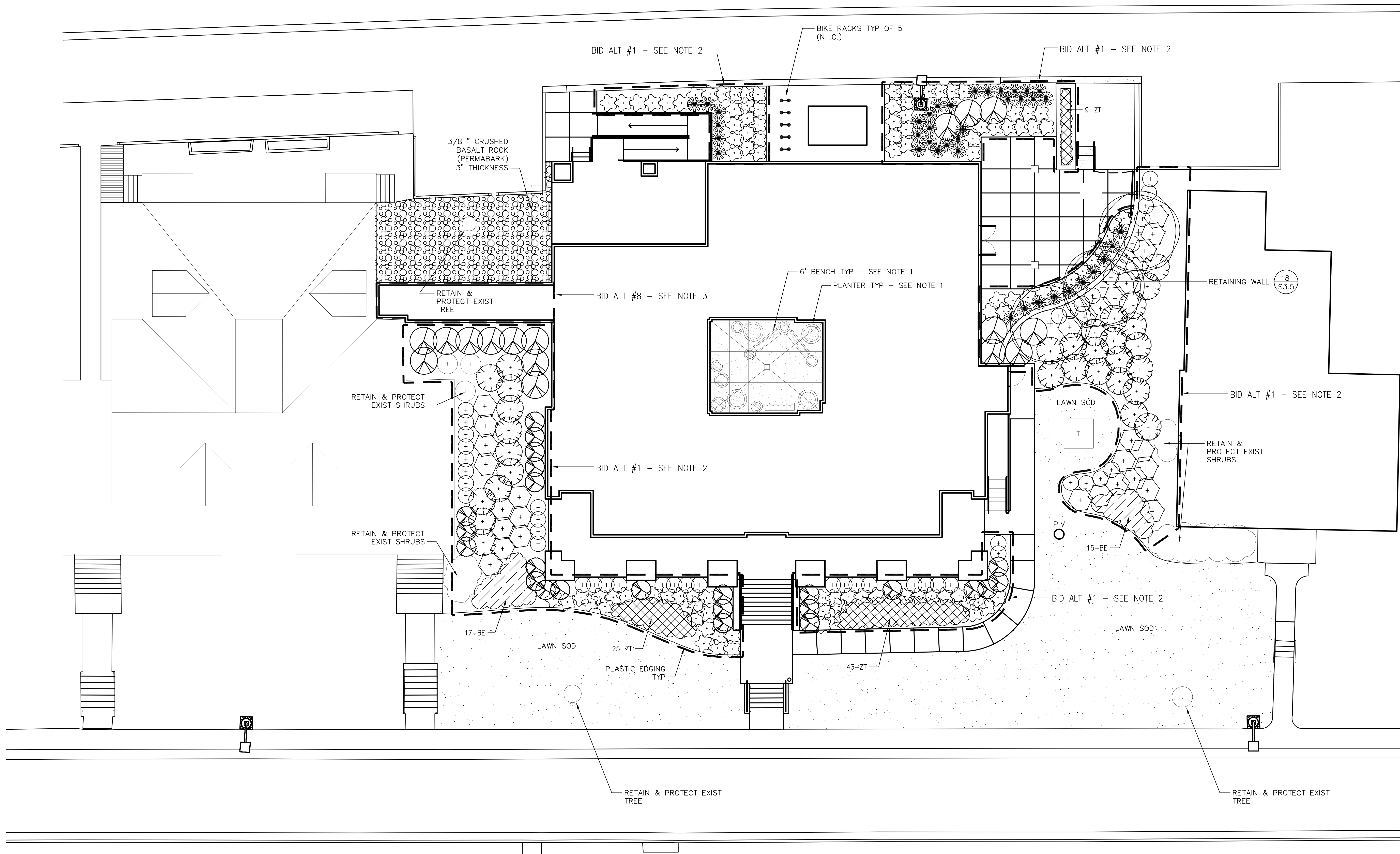
DRAWING TITLE	
SURFACE DEMOLITION PLAN	
APPROVED: CHIEF OF FACILITY MANAGEMENT SERVICE	
APPROVED: MEDICAL CENTER DIRECTOR	

PROJECT TITLE		
VA RESIDENTIAL MENTAL HEALTH FACILITY VA-260-11-RP-0663		
BUILDING NUMBER 123	CHECKED	DRAWN
LOCATION VAMC BOISE, IDAHO		

DATE	JULY 18, '12
PROJECT NO.	531-CSI-102
DRAWING NO.	L1
DWG. OF	





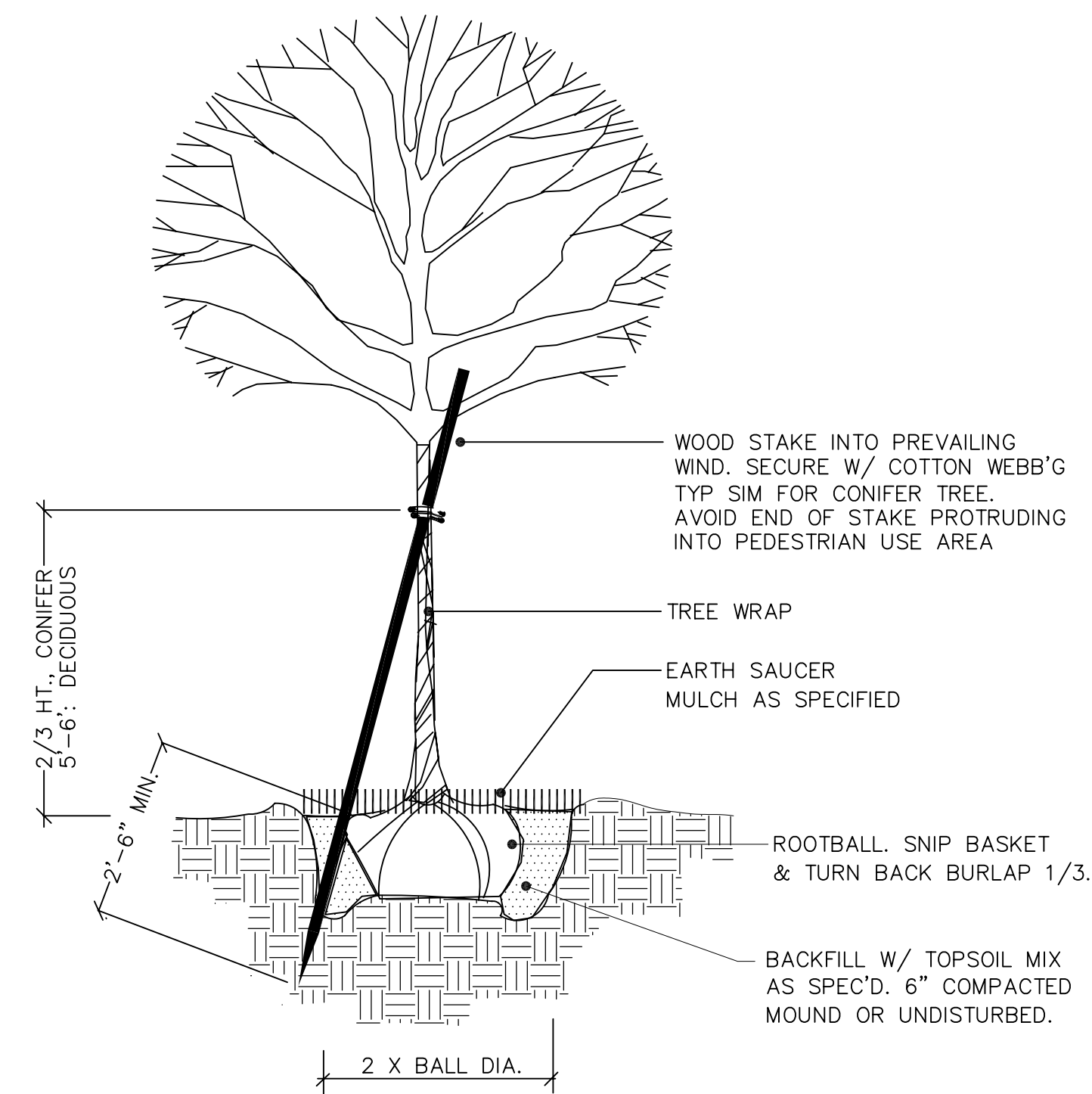


DIRECT BURY

BIKE RACK TO BE 2" ROUND SCH 40 STEEL PIPE. BEND TO FORM AND DIMENSIONS SHOWN. POWDERCOAT ASSEMBLED RACK AND ALL HARDWARE WITH RAL COLOR TO BE APPROVED

BIKE RACK

NOT TO SCALE



TREE PLANTING/STAKING

NOT TO SCALE

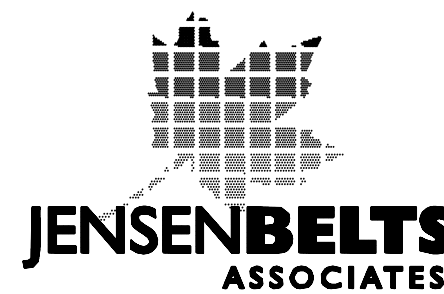
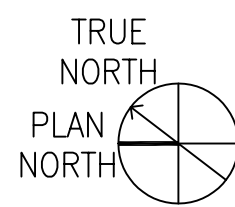
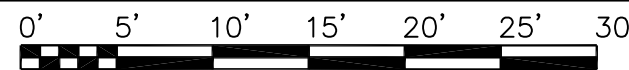
LEGEND

SYMBOL	COMMON NAME	BOTANIC NAME	SIZE
	DWARF FOUNTAIN GRASS	PENNISETUM ALOPECUROIDES 'HADELN'	2 GAL
	GRO-LOW SUMAC	RHUS AROMATICA 'GRO-LOW'	2 GAL
	KARL FORESTER REED GRASS	CALAMAGROSTIS ARUNDINACEA 'KARL FORESTER'	2 GAL
	MITCHAM GRAY LAVENDER	LAVANDULA ANGUSTIFOLIA 'MITCHAM GRAY'	2 GAL
	ROSE GLOW BARBERRY	BERBERIS THUNBERGII 'ROSE GLOW'	5 GAL
	RUSSIAN SAGE	PEROVSKIA ATRIPICIFOLIA	2 GAL
	SUMMERWINE NINEBARK	PHYSOCARPUS OPULIFOLIUS 'SEWARD'	5 GAL
	BLACK EYED SUSAN	RUDBECKIA FULGIDA 'GOLDSTRUM'	1 GAL, 30" O.C.
	ZAGREB THREADLEAF TICKSEED	COREOPSIS VERTICILLATA 'ZAGREB'	1 GAL, 24" O.C.
	CHANTICLEER PEAR	PYRUS CALLERYANA 'CHANTICLEER'	2" CAL B&B

NOTES

- SITE FURNISHINGS (N.I.C.):  
BENCH - KEYSTONE RIDGE P26, PULLMAN BENCH WITH BACK 6'. N.I.C.  
PLANTER - DURA ART STONE MEDITERRANEAN. SIZES 24"x17", 36"x22", AND 48"x30". N.I.C.  
BIKE RACK - PER DETAIL BELOW
- BID ALTERNATE #1 - IF THIS BID IS ACCEPTED, ALL PERENNIALS, ORNAMENTAL GRASSES, SHRUBS, AND TREES WILL BE ELIMINATED FROM CONTRACT. CONTRACTOR IS STILL RESPONSIBLE WITH THIS ALTERNATE FOR ALL OTHER ELEMENTS INCLUDING TOPSOIL, BARK MULCH, CRUSHED BASALT MULCH, LAWN SOD, EDGING, ETC...
- BID ALTERNATE #8 - IF THIS BID IS ACCEPTED, 3" THICKNESS OF 3/8" CRUSHED BASALT ROCK MULCH(PERMABARK) SHALL BE PLACED IN THE FOOTPRINT AREA OF THE CONNECTOR. PLASTIC EDGING SHALL BE INSTALLED TO SEPERATE THE BARK MULCH FROM BASALT.
- LOCATE AND PROTECT ALL UTILITIES DURING CONSTRUCTION. REFER TO CIVIL PLANS FOR LOCATIONS.

L1 LANDSCAPE PLAN  
SCALE: 1" = 10'



Site Planning / Landscape Architecture  
495 Main Street, Boise, Idaho 83702  
Ph. (208) 343-7775, Fax. (208) 343-7778



ZGA ARCHITECTS & PLANNERS, CHARTERED



408 E. Parkcenter Blvd., Suite 205 | Boise, Idaho 83706 | t: (208) 345.8872 | f: (208) 343.7162 | www.zga.com

CAD FILE NAME:  
531CSI102\_L21.dwg  
XREF FILE NAME:  
xVAbord.dwg  
531CSI102xSITE.dwg

DRAWING TITLE  
LANDSCAPE PLAN

APPROVED: CHIEF OF FACILITY MANAGEMENT SERVICE

APPROVED: MEDICAL CENTER DIRECTOR

PROJECT TITLE  
VA RESIDENTIAL MENTAL  
HEALTH FACILITY  
VA-260-11-RP-0663

BUILDING NUMBER  
123

LOCATION  
VAMC BOISE, IDAHO

DATE  
JULY 18, '12

PROJECT NO.  
531-CSI-102

DRAWING NO.  
L2.1

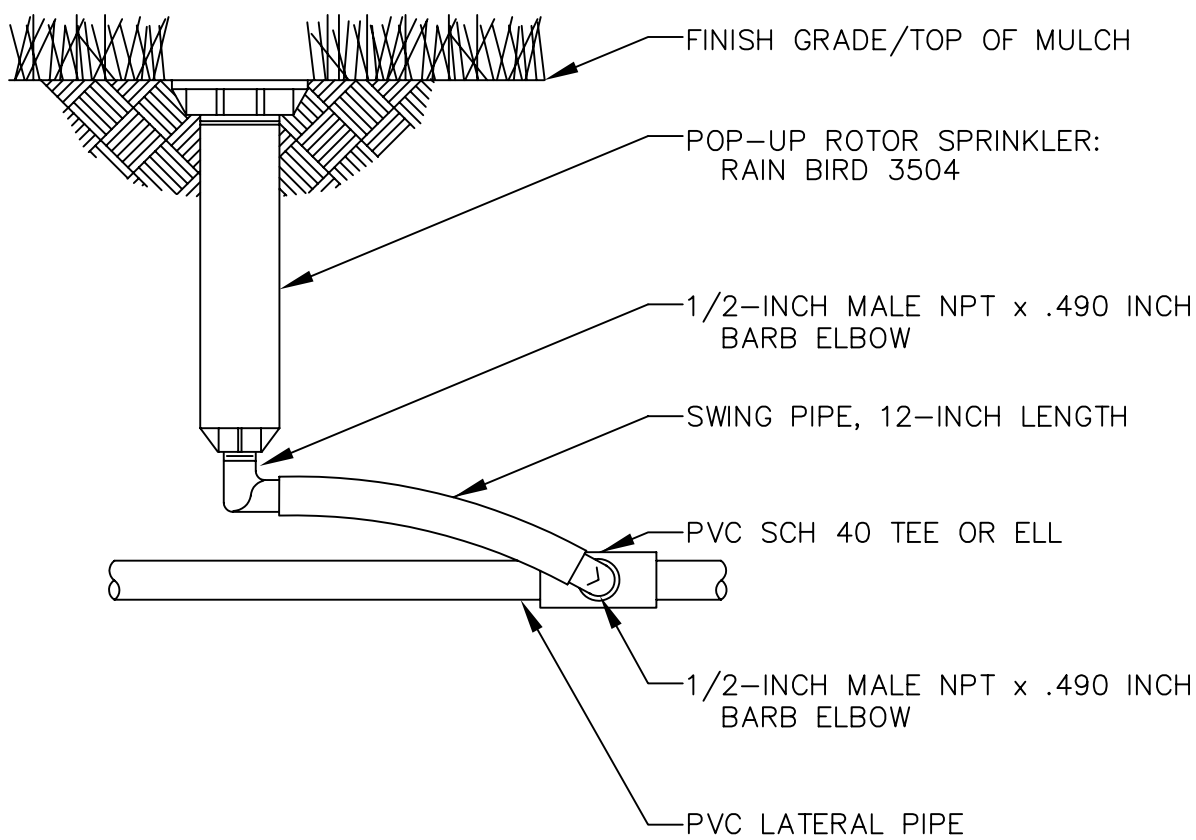
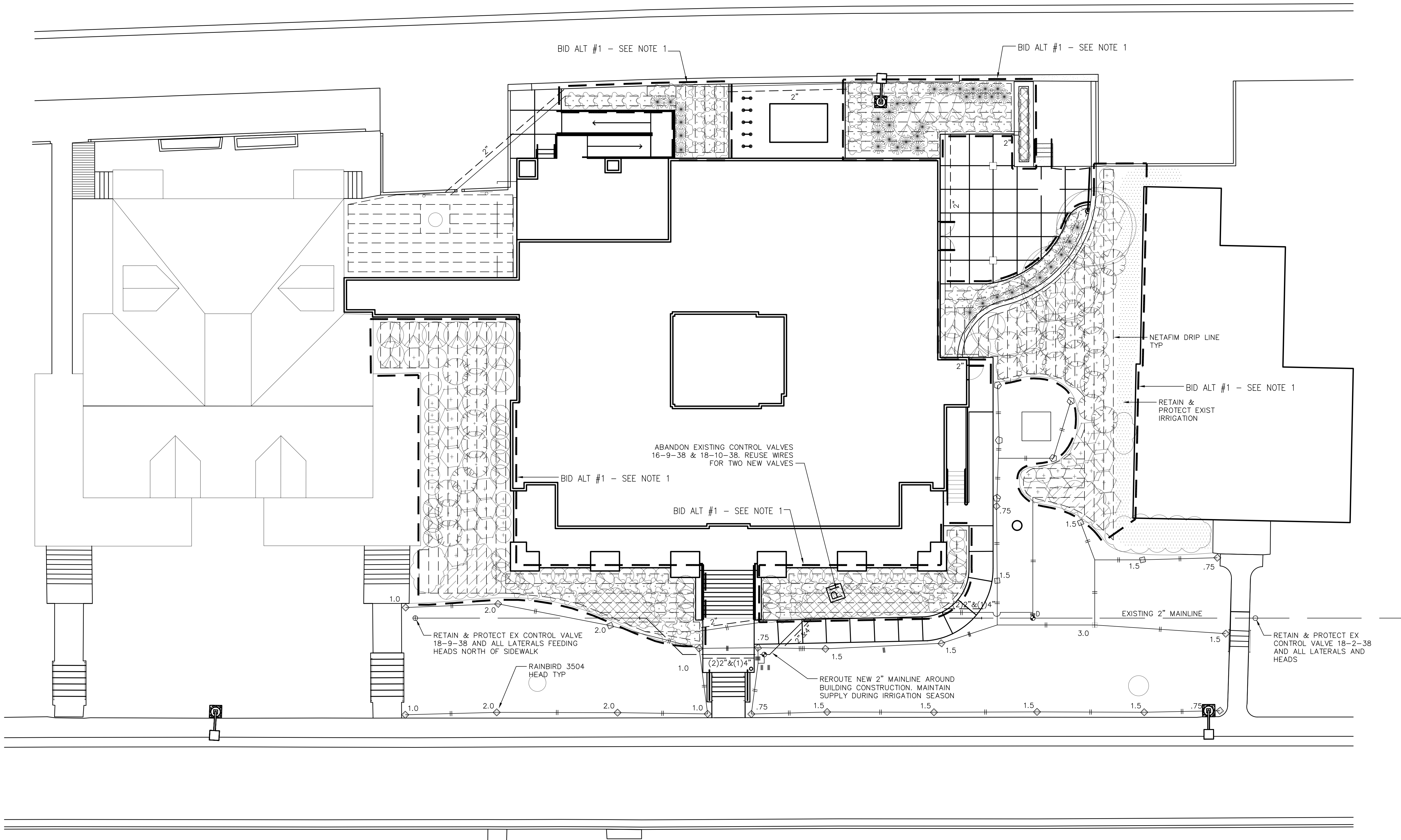
DWG OF

METRIC CONVERSION FACTOR:  
1" = 25.4mm  
1'-0" = 304.8mm

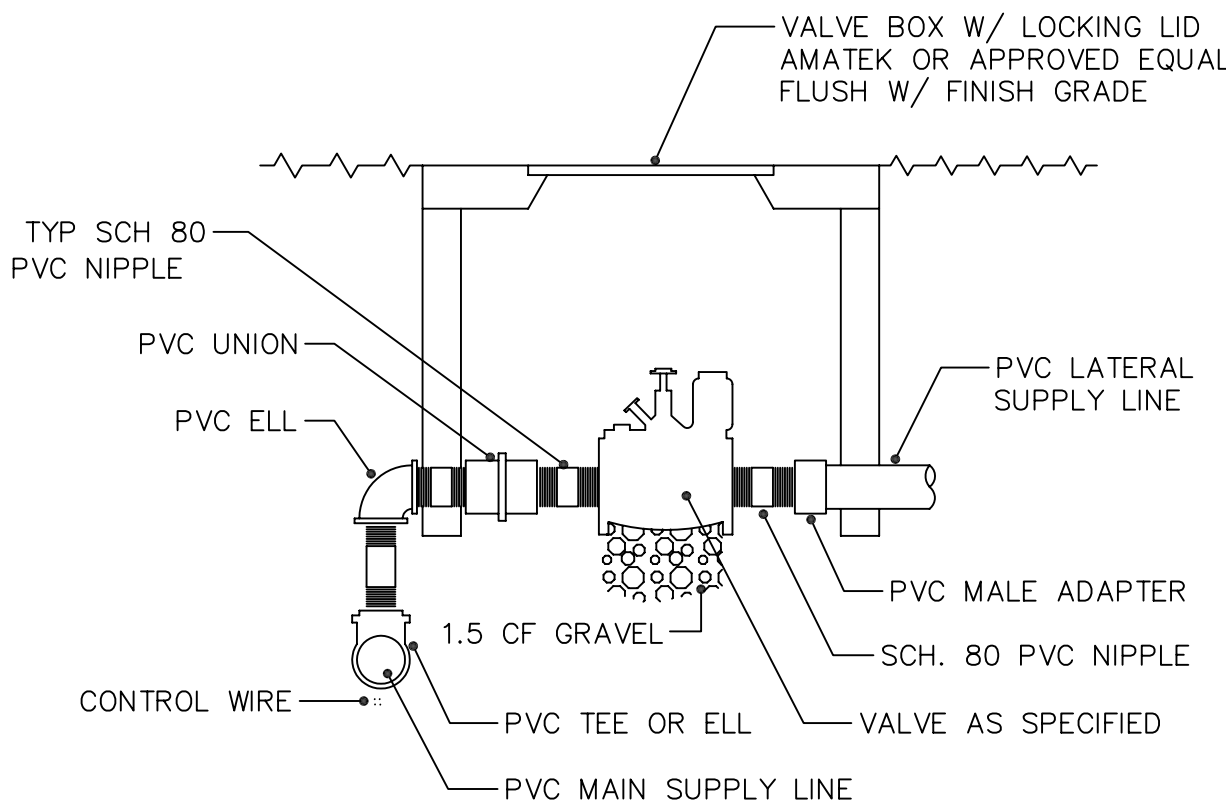


DEPARTMENT OF VETERANS AFFAIRS





POP-UP HEAD  
NOT TO SCALE



REMOTE CONTROL VALVE  
NOT TO SCALE

LEGEND

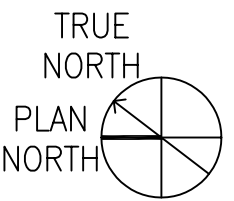
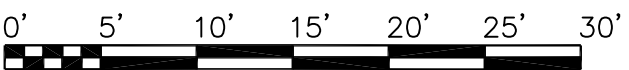
SYMBOL	DESCRIPTION
	RAINBIRD 3504 ROTOR HEAD. NOZZLE AND PATTERN PER PLAN
	RAINBIRD 3504-R13-18 ROTOR HEAD WITH ROTARY NOZZLE. PATTERN PER PLAN
	RAINBIRD 150-PESB-PRS-D REMOTE CONTROL VALVE
	RAINBIRD XCZ-100-PRF DRIP CONTROL ZONE KIT
	NETAFIM TECHLINE CV DRIPPERLINE WITH .6 GPH EMITTERS SPACED 24"
	CLASS 200 PVC LATERAL LINE. SIZE PER NOTE BELOW
	2" SCHEDULE 40 PVC MAIN LINE
	CLASS 200 PVC SLEEVE. SIZE PER PLAN

NOTES

- BID ALTERNATE #1 - IF THIS BID IS ACCEPTED, NO PLANT MATERIALS WILL BE INSTALLED IN BEDS. DRIPPERLINE WILL ALSO BE ELIMINATED FROM THESE BEDS. CONTRACTOR IS STILL RESPONSIBLE WITH THIS ALTERNATE FOR ALL OTHER ELEMENTS INCLUDING MAINLINE, ROTOR ZONE HEADS AND LATERALS, REMOTE CONTROL VALVES, DRIP CONTROL ZONE KIT, SLEEVING, ETC... DRIPPERLINE IS STILL NEEDED FOR AREA AROUND EXISTING TREE. PROVIDE 3/4" LATERAL SUPPLY LINE TO THIS AREA. INSTALL 3/4" LATERAL SUPPLY LINE TO ALL DRIP AREAS WITH CAPPED TEE FOR FUTURE DRIP CONNECTION.
- LOCATE AND PROTECT ALL UTILITIES DURING CONSTRUCTION. REFER TO CIVIL PLANS FOR LOCATIONS.
- SIZE LATERAL LINES PER PLAN AND BELOW:

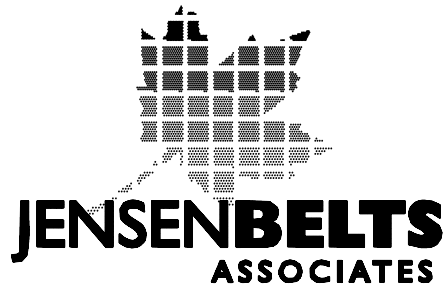
3/4"	=====	0-10.0 GPM
1"	=====	10.1-16.0
1-1/4"	=====	16.1-26.0
1-1/2"	=====	26.1-36.0
2"	=====	36.1-55.0

L1 IRRIGATION PLAN  
SCALE: 1" = 10'



FINAL SET

METRIC CONVERSION FACTOR:  
1" = 25.4mm  
1'-0" = 304.8mm



Site Planning / Landscape Architecture  
495 Main Street, Boise, Idaho 83702  
Ph. (208) 343-7175, Fx. (208) 343-7178



ZGA ARCHITECTS & PLANNERS, CHARTERED



408 E. Parkcenter Blvd., Suite 205 | Boise, Idaho 83706 | t: (208) 345.8872 | f: (208) 343.7162 | www.zga.com

CAD FILE NAME:  
531CSI102\_L22.dwg  
XREF FILE NAME:  
xVAbord.dwg  
531CSI102xSITE.dwg  
531CSI102\_L21.dwg

DRAWING TITLE  
IRRIGATION PLAN

APPROVED: CHIEF OF FACILITY MANAGEMENT SERVICE

APPROVED: MEDICAL CENTER DIRECTOR

PROJECT TITLE  
VA RESIDENTIAL MENTAL  
HEALTH FACILITY  
VA-260-11-RP-0663

BUILDING NUMBER  
123

LOCATION  
VAMC BOISE, IDAHO

DATE  
JULY 18, '12

PROJECT NO.  
531-CSJ-102

DRAWING NO.  
L2.2

DWG OF



DEPARTMENT OF VETERANS AFFAIRS