

WALL FINISH KEY
P1, P2, P3, P4 (PAINT)
VWC1, VWC2, VWC3 (VINYL WALLCOVERING)
NOTE:
REFERENCE FINISH SCHEDULE
FOR ALL ROOMS NOT SHOWING
WALL FINISHES



WALL FINISH PLAN
FIRST FLOOR
SCALE: 1/4" = 1'-0"

FINAL SET

METRIC CONVERSION FACTOR:
1" = 25.4mm
1'-0" = 304.8mm

REVISIONS	DATE

Comerstone Design

locality is high performance architecture™

1005 E. Park Blvd. Boise, Id 83702
P:208.384.1422 F:208-368.6311
www.comerstoneinteriordesign.com

ZGA ARCHITECTS & PLANNERS, CHARTERED

408 E. Parkcenter Blvd., Suite 205 | Boise, Idaho 83706 | t: (208) 345.8872 | f: (208) 343.7162 | www.zga.com

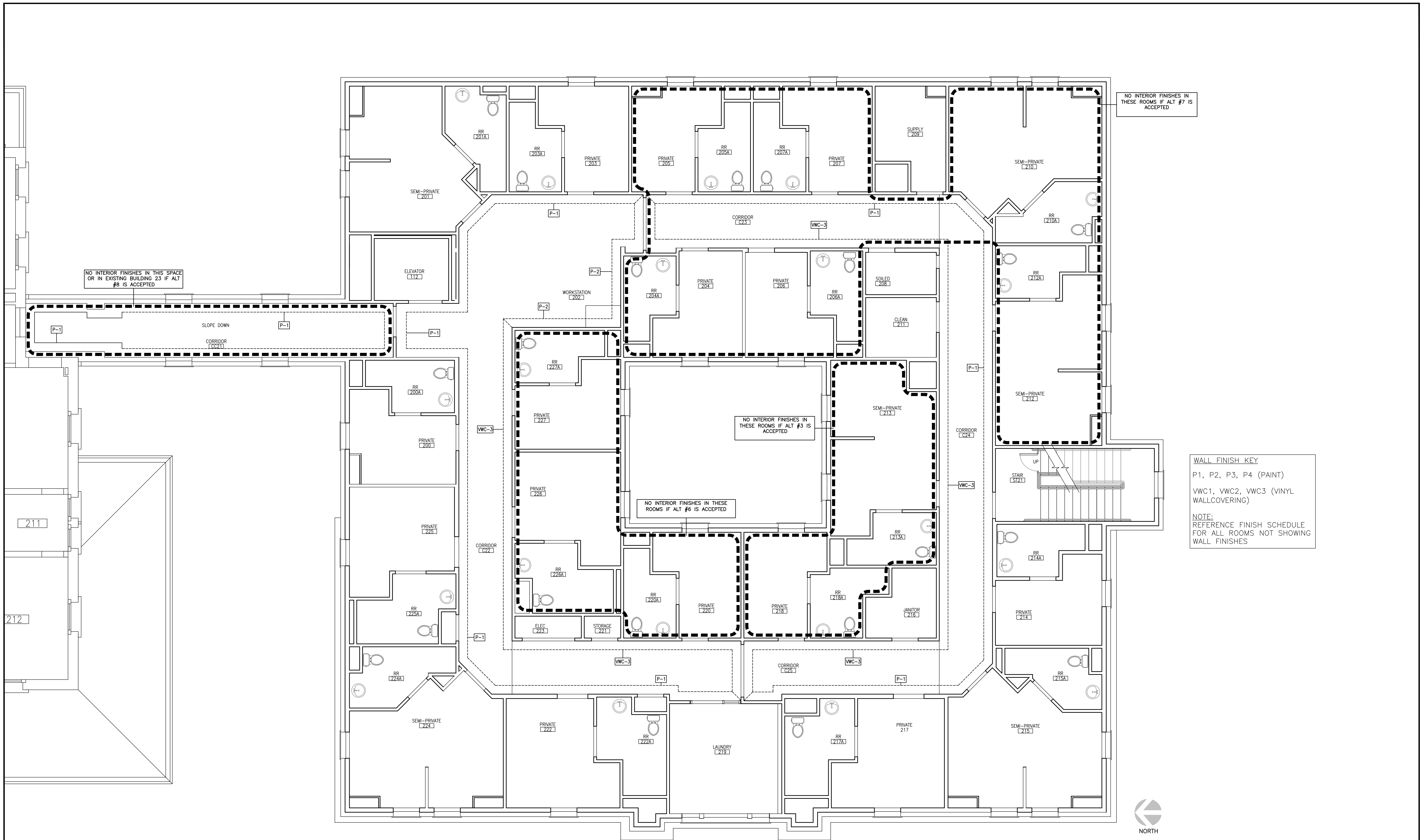
CAD FILE NAME:
XREF FILE NAME:

DRAWING TITLE
WALL FINISH PLAN FIRST FLOOR
APPROVED: CHIEF OF FACILITY MANAGEMENT SERVICE
APPROVED: MEDICAL CENTER DIRECTOR

PROJECT TITLE
VA RESIDENTIAL MENTAL HEALTH FACILITY VA-260-11-RP-0663
BUILDING NUMBER
123
LOCATION
VAMC BOISE, IDAHO

DATE
JULY 18, '12
PROJECT NO.
531-CSI-102
DRAWING NO.
ID1.0
DWG OF

DEPARTMENT OF VETERANS AFFAIRS



WALL FINISH KEY
P1, P2, P3, P4 (PAINT)
VWC1, VWC2, VWC3 (VINYL
WALLCOVERING)
NOTE:
REFERENCE FINISH SCHEDULE
FOR ALL ROOMS NOT SHOWING
WALL FINISHES



WALL FINISH PLAN
SECOND FLOOR
SCALE: 1/4" = 1'-0"

FINAL SET

METRIC CONVERSION FACTOR:
1" = 25.4mm
1'-0" = 304.8mm

REVISIONS	DATE

Comerstone Design
quality is high performance solutions™

1005 E. Park Blvd., Boise, Id 83702
P:208.384.1422 F:208-388.6311
www.comerstoneinteriordesign.com

ZGA ARCHITECTS & PLANNERS, CHARTERED

408 E. Parkcenter Blvd., Suite 205 | Boise, Idaho 83706 | t: (208) 345.8872 | f: (208) 343.7162 | www.zga.com

CAD FILE NAME:
XREF FILE NAME:

DRAWING TITLE
**WALL FINISH PLAN
SECOND FLOOR**

APPROVED: CHIEF OF FACILITY MANAGEMENT SERVICE
APPROVED: MEDICAL CENTER DIRECTOR

PROJECT TITLE
VA RESIDENTIAL MENTAL
HEALTH FACILITY
VA-260-11-RP-0663

BUILDING NUMBER
123

CHECKED
DRAWN

LOCATION
VAMC BOISE, IDAHO

DATE
JULY 18, '12

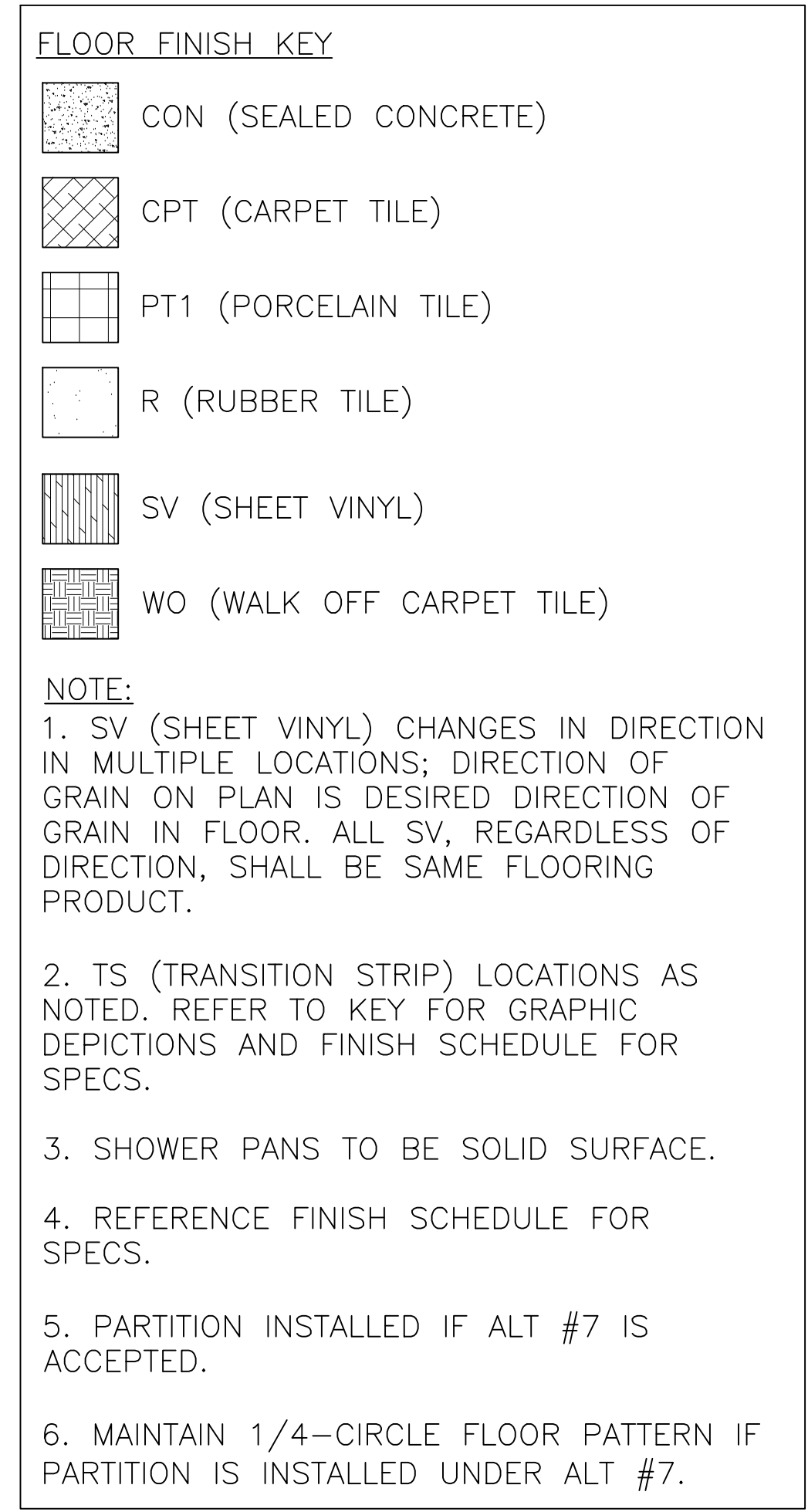
PROJECT NO.
531-CSI-102

DRAWING NO.
ID1.1

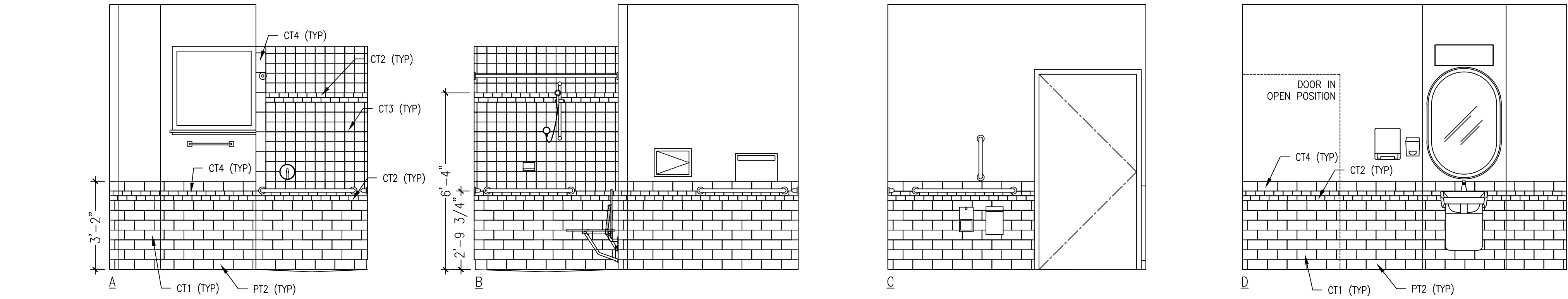
DWG OF

W

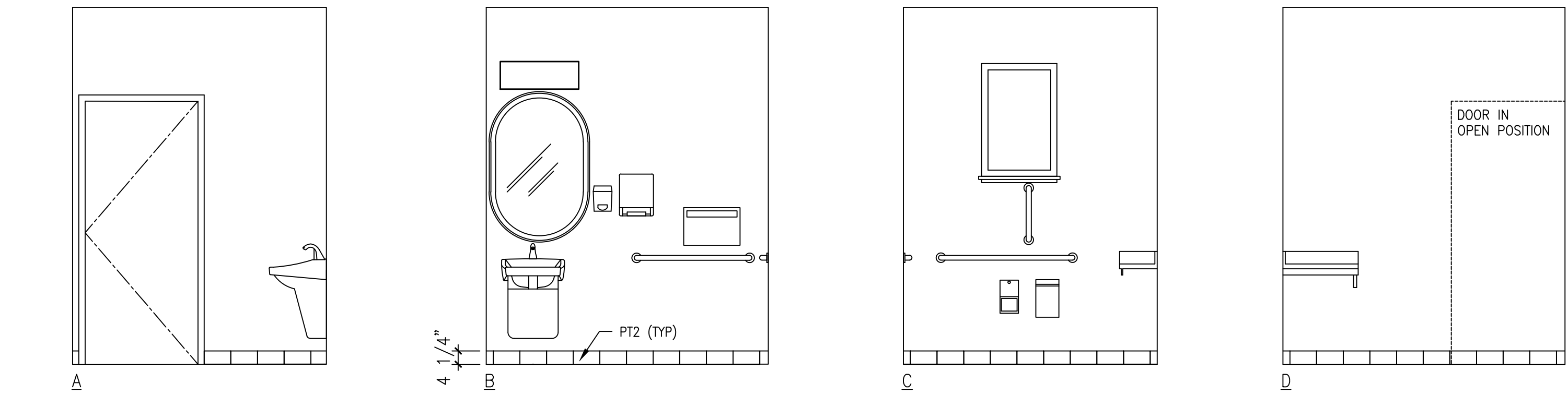
DEPARTMENT OF VETERANS AFFAIRS



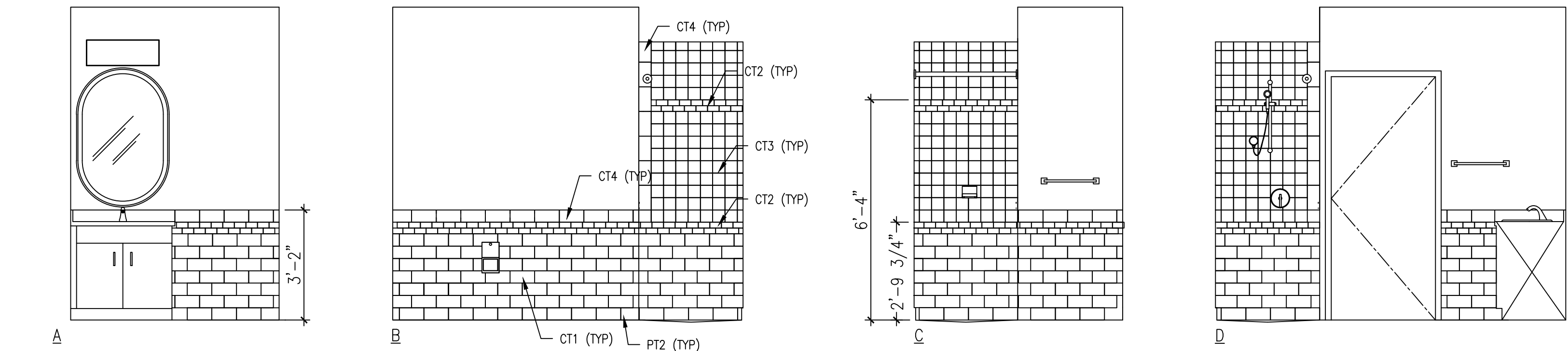
DEPARTMENT OF VETERANS AFFAIRS



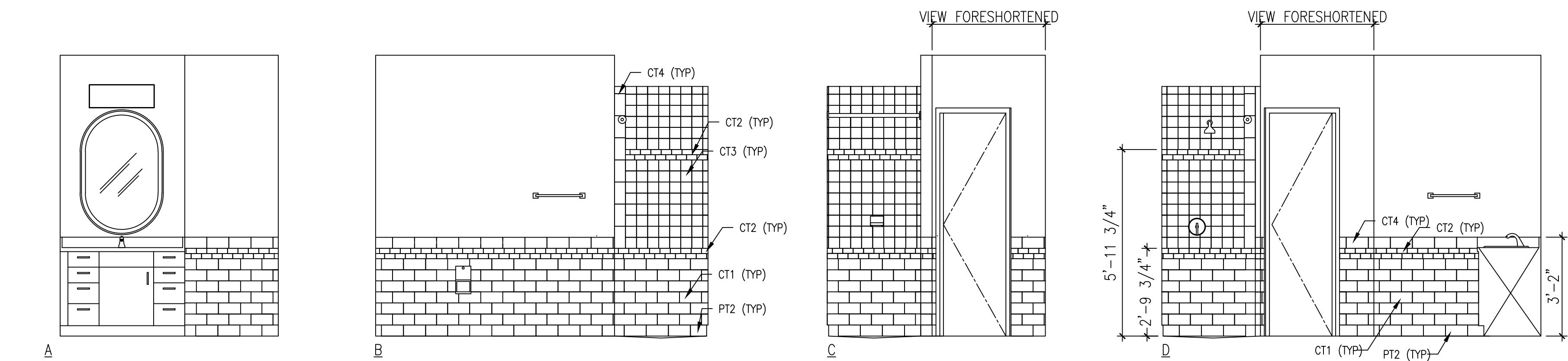
29 SHOWER/TOILET 106
SCALE: 3/8"=1'-0"



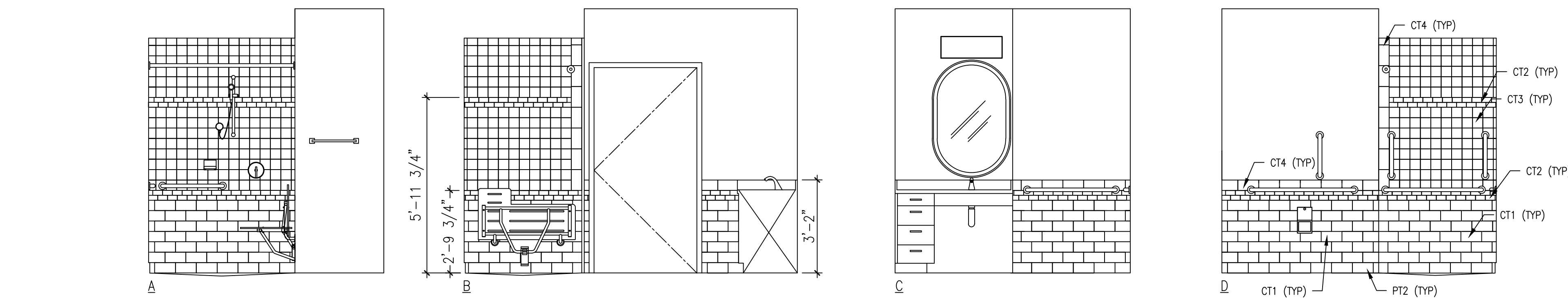
30 STAFF TOILET-123
SCALE: 3/8"=1'-0"



26 TYPICAL PRIVATE RESTROOM-214A SHOWN
SCALE: 3/8"=1'-0"



28 TYPICAL SEMI-PRIVATE RESTROOM-224A SHOWN
SCALE: 3/8"=1'-0"



27 TYPICAL PRIVATE (BARIATRIC) RESTROOM-225A SHOWN
SCALE: 3/8"=1'-0"

NOTE:
CT* (CERAMIC TILE WAINSCOT) AND
OTHER WALL MOUNTED FIXTURES
SHOWN FOR COORDINATION ONLY.
VERIFY ALL MEASUREMENTS ONSITE.

FIXTURES SHOWN ABOVE TILE
WAINSCOT TO REMAIN ABOVE TILE
WAINSCOT. REFERENCE A7.0 FOR
FIXTURE TAGS AND MOUNTING
HEIGHTS.

REFERENCE FINISH SCHEDULE FOR
SPECS.

REVISIONS	DATE



ZGA ARCHITECTS & PLANNERS, CHARTERED

408 E. Parkcenter Blvd., Suite 205 | Boise, Idaho 83706 | t: (208) 345.8872 | f: (208) 343.7162 | www.zga.com

CAD FILE NAME:
XREF FILE NAME:

DRAWING TITLE
RESTROOM TILE LAYOUTS
APPROVED: CHIEF OF FACILITY MANAGEMENT SERVICE
APPROVED: MEDICAL CENTER DIRECTOR

PROJECT TITLE
VA RESIDENTIAL MENTAL HEALTH FACILITY
VA-260-11-RP-0663
BUILDING NUMBER
123
LOCATION
VAMC BOISE, IDAHO

DATE
JULY 18, '12
PROJECT NO.
531-CSI-102
DRAWING NO.
ID7.0
DWG OF

