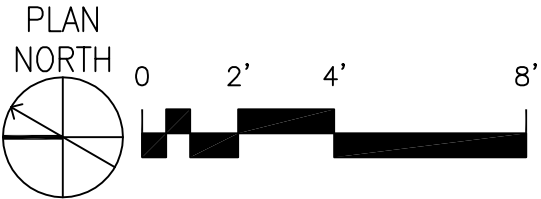


1 FIRE PROTECTION SITE PLAN
SCALE: 1/8" = 1'-0"



GENERAL SHEET NOTES

- A. THIS DRAWING IS INTENDED TO SHOW GENERAL INFORMATION FOR PIPE ROUTING AND SPRINKLER LOCATIONS. THE CONTRACTOR IS RESPONSIBLE FOR PRODUCING HYDRAULIC CALCULATIONS AND SHOP DRAWINGS SHOWING SPRINKLERS, PIPE, FITTINGS, OFFSETS, HANGERS, EARTHQUAKE BRACING, DEVICES, AND APPURTENANCES NECESSARY FOR A COMPLETE SYSTEM AS COORDINATED WITH OTHER TRADES AND AS APPROVED BY THE LOCAL AUTHORITY HAVING JURISDICTION.
- B. INSTALL EXPOSED ITEMS (PIPING HANGERS, EARTHQUAKE BRACING, ETC.) IN A NEAT UNIFORM MANNER THAT IS VISUALLY ORGANIZED AND FOLLOWS BUILDING LINES.
- C. MATERIAL AND EQUIPMENT IS TO BE NEW AND UL APPROVED.
- D. PIPING, FITTINGS, EARTHQUAKE BRACING, HANGERS, METHOD OF HANGING, JOINING OF PIPE AND FITTINGS SHALL BE IN ACCORDANCE WITH STATE CODES, LOCAL JURISDICTION REQUIREMENTS, NFPA 13 AND THE CONTRACT DOCUMENTS.
- E. SPRINKLER PIPING IN AREAS WITH FINISHED CEILINGS SHALL BE CONCEALED ABOVE THE OCCUPANCY CEILING OR IN WALLS. SPRINKLER PIPING IN AREAS WITH EXPOSED STRUCTURE SHALL BE INSTALLED AS CLOSE TO WALLS, CEILINGS, AND STRUCTURAL MEMBERS AS FEASIBLY POSSIBLE.
- F. SPRINKLER HEADS LOCATED IN AREAS WITH SUSPENDED CEILING TILE SHALL BE INSTALLED IN CENTER OF TILE PATTERN.
- G. REFER TO OTHER TRADE DRAWINGS FOR COORDINATION WITH MECHANICAL, ELECTRICAL, ETC.
- H. REFER TO ARCHITECTURAL PLANS FOR FINAL AREA CONFIGURATION, FINAL CEILING LAYOUT, AND SPECIFIC PROJECT PHASING.
- J. ALL FIRE ALARM PROGRAMMING MUST BE ACCOMPLISHED BY THE CURRENT VA BOISE FIRE ALARM MAINTENANCE CONTRACTOR. THE CURRENT BOISE FIRE ALARM MAINTENANCE CONTRACTOR IS FIRE SENTRY SYSTEMS, INC. 208-887-4774.
- UNDERGROUND:
- A. THIS DRAWING IS INTENDED TO SHOW GENERAL INFORMATION FOR PIPE ROUTING AND LOCATIONS. THE CONTRACTOR IS RESPONSIBLE FOR PRODUCING HYDRAULIC CALCULATIONS AND SHOP DRAWINGS NECESSARY FOR A COMPLETE SYSTEM AS COORDINATED WITH OTHER TRADES AND AS APPROVED BY THE LOCAL AHJ.
- B. ALL UNDERGROUND FIRE PROTECTION TO BE FLUSHED AND TESTED PER NFPA REQUIREMENTS.
- C. 5' MINIMUM BURY ON SUPPLY LINE.
- SCOPE OF WORK:
- A. INSTALL A FIRE SPRINKLER SYSTEM MEETING REQUIREMENTS OF NFPA 13, 2010 EDITION THROUGHOUT THE STRUCTURE.

SHEET KEYNOTES

1. PIV VALVE WITH TAMPER SWITCH.
2. SEE SHEET FP0.02 FOR CONTINUATION.
3. 4" FIRE LINE INTO WALL OF BASEMENT MECHANICAL ROOM.

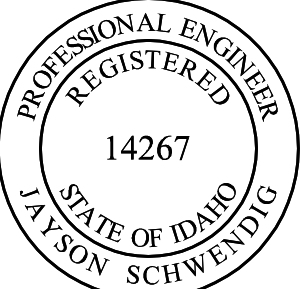
FINAL SET

METRIC CONVERSION FACTOR:
1" = 25.4mm
1'-0" = 304.8mm



REVISIONS	DATE

POWER ENGINEERS
2041 South Cobalt Point Way
Meridian, Idaho 83642
208-288-6100



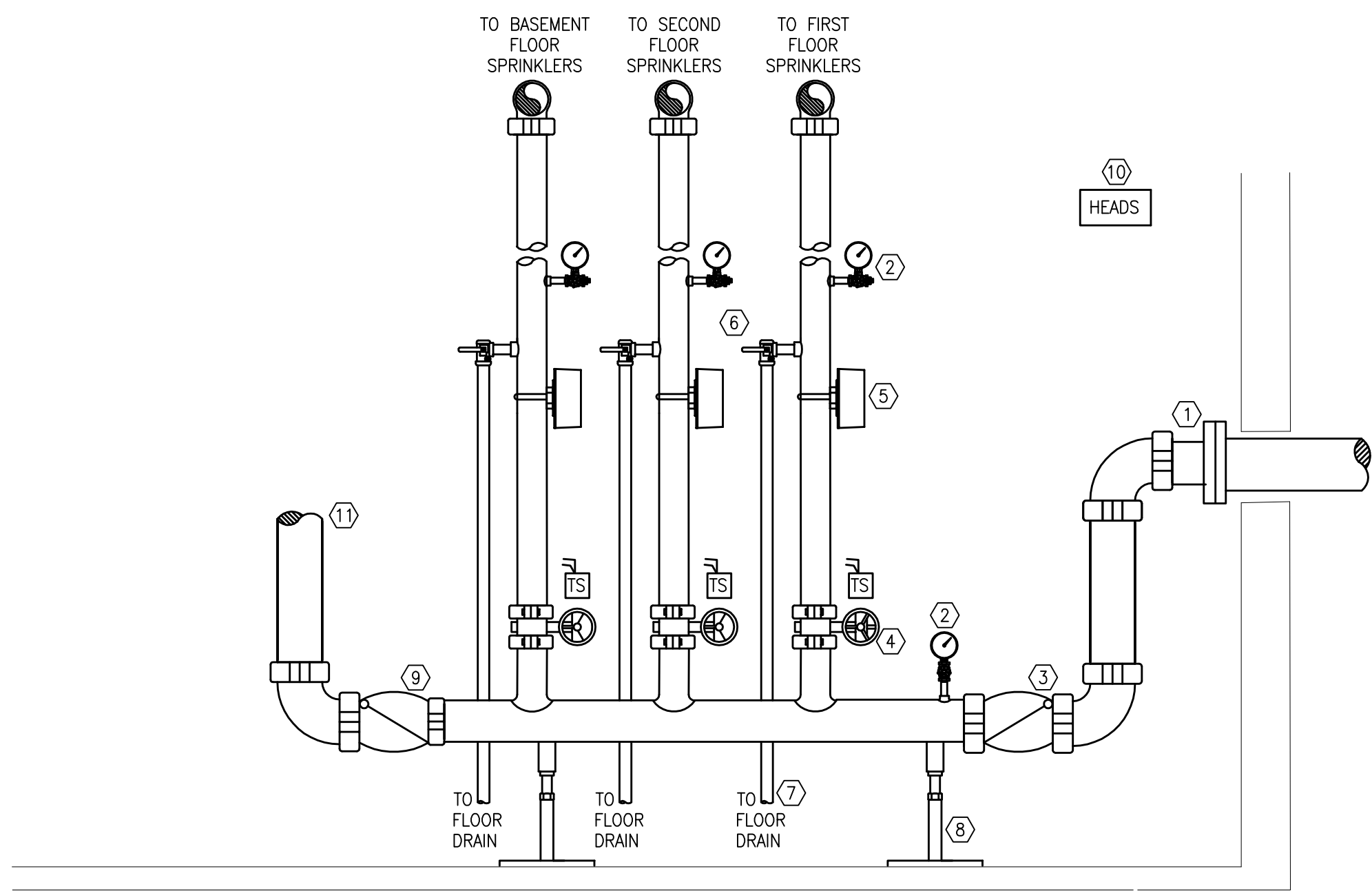
ZGA ARCHITECTS & PLANNERS, CHARTERED
408 E. Parkcenter Blvd., Suite 205 | Boise, Idaho 83706 | t: (208) 345.8872 | f: (208) 343.7182 | www.zga.com

CAD FILE NAME:
531CSI102_FP001
XREF FILE NAME:
xVAbord
531-CSI-102_SITE-ROTATED

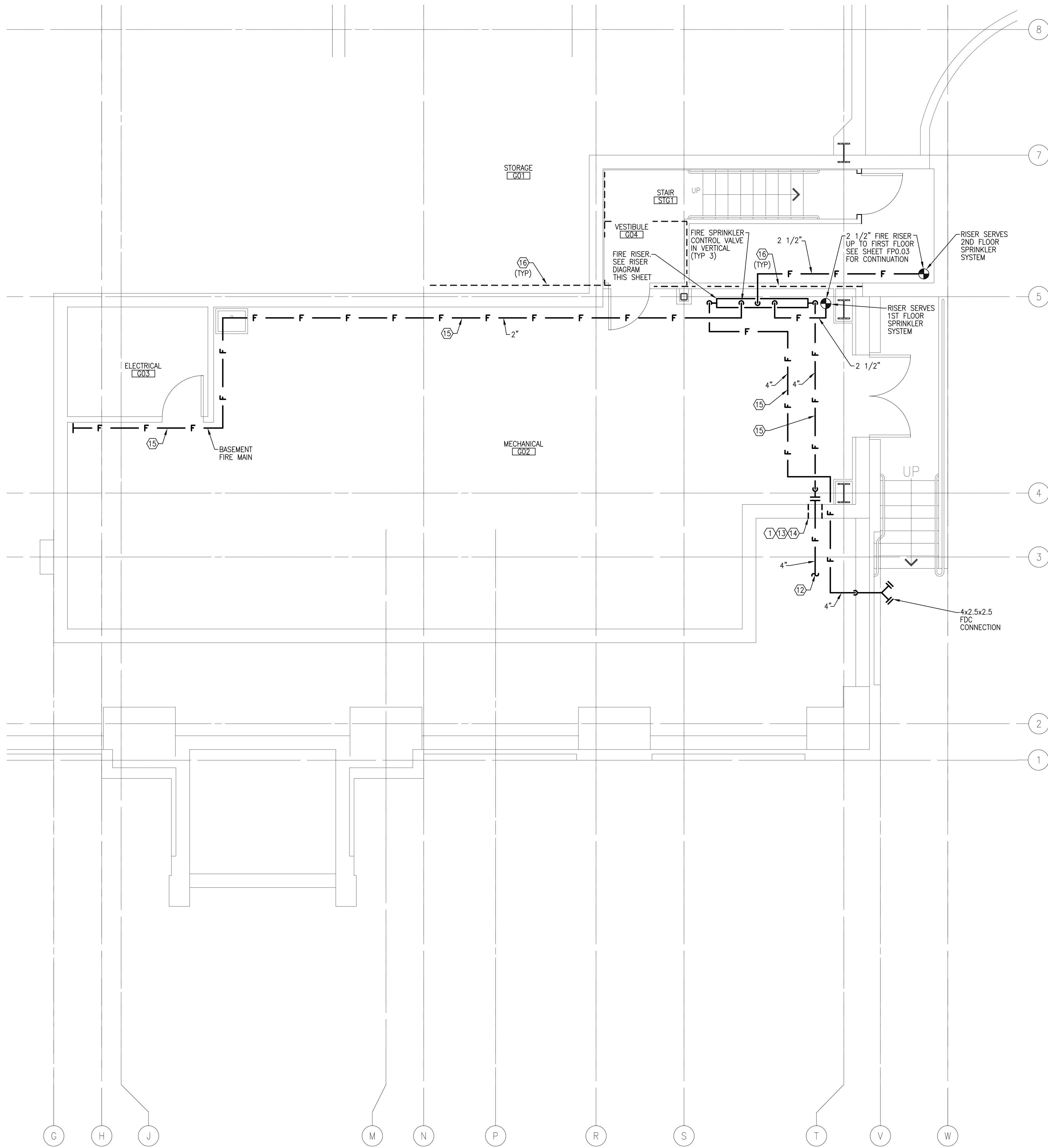
DRAWING TITLE FIRE PROTECTION SITE PLAN	
APPROVED: CHIEF OF FACILITY MANAGEMENT SERVICE	
APPROVED: MEDICAL CENTER DIRECTOR	

PROJECT TITLE VA RESIDENTIAL MENTAL HEALTH FACILITY VA-260-11-RP-0663	
BUILDING NUMBER 123	CHECKED JB
LOCATION VAMC BOISE, IDAHO	DRAWN JA

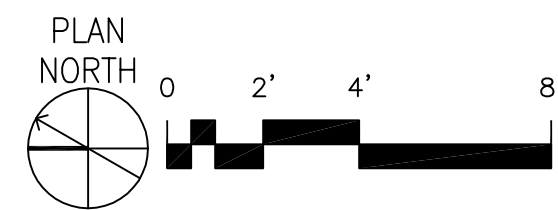
DATE JULY 18, '12	PROJECT NO. 531-CSI-102
DRAWING NO. FP0.01	DWG OF



1 FIRE SPRINKLER RISER DIAGRAM
SCALE: NTS



2 BASEMENT FIRE PROTECTION PLAN
SCALE: 1/4" = 1'-0"



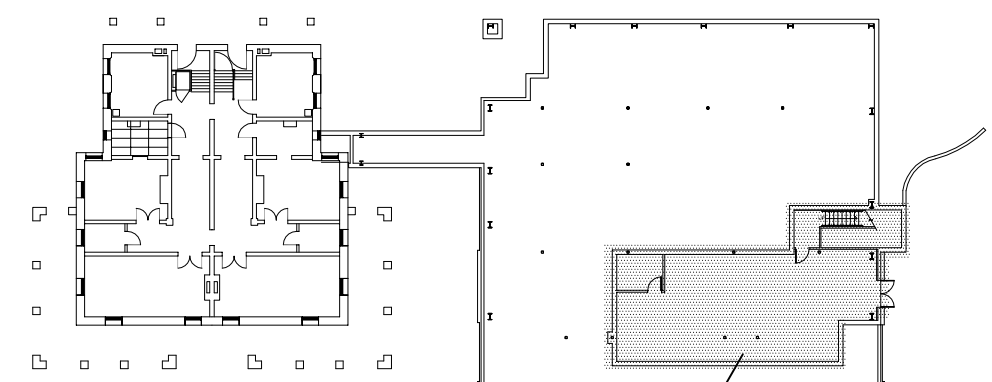
GENERAL SHEET NOTES

- THIS DRAWING IS INTENDED TO SHOW GENERAL INFORMATION FOR PIPE ROUTING AND SPRINKLER LOCATIONS. THE CONTRACTOR IS RESPONSIBLE FOR PRODUCING HYDRAULIC CALCULATIONS AND SHOP DRAWINGS SHOWING SPRINKLERS, PIPE, FITTINGS, OFFSETS, HANGERS, EARTHQUAKE BRACING, DEVICES, AND APPURTENANCES NECESSARY FOR A COMPLETE SYSTEM AS COORDINATED WITH OTHER TRADES AND AS APPROVED BY THE LOCAL AUTHORITY HAVING JURISDICTION.
- INSTALL EXPOSED ITEMS (PIPING HANGERS, EARTHQUAKE BRACING, ETC.) IN A NEAT UNIFORM MANNER THAT IS VISUALLY ORGANIZED AND FOLLOWS BUILDING LINES.
- MATERIAL AND EQUIPMENT IS TO BE NEW AND UL APPROVED.
- PIPING, FITTINGS, EARTHQUAKE BRACING, HANGERS, METHOD OF HANGING, JOINING OF PIPE AND FITTINGS SHALL BE IN ACCORDANCE WITH STATE CODES, LOCAL JURISDICTION REQUIREMENTS, NFPA 13 AND THE CONTRACT DOCUMENTS.
- SPRINKLER PIPING IN AREAS WITH FINISHED CEILINGS SHALL BE CONCEALED ABOVE THE OCCUPANCY CEILING OR IN WALLS. SPRINKLER PIPING IN AREAS WITH EXPOSED STRUCTURE SHALL BE INSTALLED AS CLOSE TO WALLS, CEILINGS, AND STRUCTURAL MEMBERS AS FEASIBLY POSSIBLE.
- SPRINKLER HEADS LOCATED IN AREAS WITH SUSPENDED CEILING TILE SHALL BE INSTALLED IN CENTER OF TILE PATTERN.
- REFER TO OTHER TRADE DRAWINGS FOR COORDINATION WITH MECHANICAL, ELECTRICAL, ETC.
- REFER TO ARCHITECTURAL PLANS FOR FINAL AREA CONFIGURATION, FINAL CEILING LAYOUT, AND SPECIFIC PROJECT PHASING.
- ALL FIRE ALARM PROGRAMMING MUST BE ACCOMPLISHED BY THE CURRENT VA BOISE FIRE ALARM MAINTENANCE CONTRACTOR. THE CURRENT BOISE FIRE ALARM MAINTENANCE CONTRACTOR IS FIRE SENTRY SYSTEMS, INC. 208-887-4774.
- PROTECT ENTIRE BASEMENT AS ORDINARY HAZARD PER NFPA 13 REQUIREMENTS.

SCOPE OF WORK:
A. INSTALL A FIRE SPRINKLER SYSTEM MEETING REQUIREMENTS OF NFPA 13, 2010 EDITION THROUGHOUT THE STRUCTURE.

SHEET KEYNOTES

- 4" UNDERGROUND SUPPLY. PENETRATION INTO RISER ROOM TO BE SECURED AND RODDED PER LOCAL JURISDICTION REQUIREMENTS. PROVIDE 2" ANNULAR CLEARANCE AND WATERPROOF SEAL AT WALL PENETRATION.
- WATER PRESSURE GAUGE.
- SINGLE CHECK VALVE ASSEMBLY.
- SECTIONAL CONTROL VALVE WITH TAMPER SWITCH.
- FLOW SWITCH.
- TEST AND DRAIN VALVE.
- 2" MAIN DRAIN - ROUTE TO FLOOR DRAIN.
- PIPE STAND.
- 4" CHECK VALVE TO FIRE DEPARTMENT CONNECTION.
- SPARE SPRINKLER BOX.
- 4" FIRE DEPARTMENT CONNECTION. COORDINATE MOUNTING HEIGHT AND LOCATION WITH ARCHITECTURAL PLANS.
- SEE SHEET FP0.01 FOR CONTINUATION.
- COORDINATE FIRE BUILDING ENTRY WITH MECHANICAL PIPING AT THIS LOCATION. SEE SHEET P2.01.
- FOUNDATION WALL PENETRATION. COORDINATE LOCATION OF PIPING SLEEVE WITH STRUCTURAL DRAWINGS. SEE DETAIL 9/P6.01.
- COORDINATE MAIN ROUTING WITH MECHANICAL ROOM PIPING. SEE SHEET P2.01.
- RATED WALL ASSEMBLY. SEE ARCHITECTURAL SHEET G2.01 FOR TYPE.



BASEMENT KEY PLAN
NOT TO SCALE

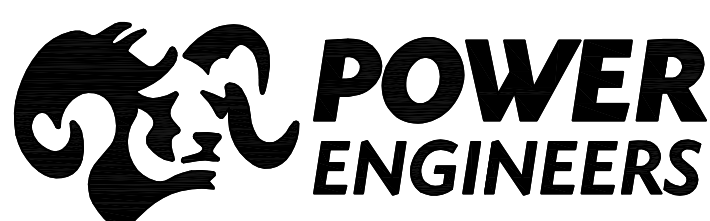


FINAL SET

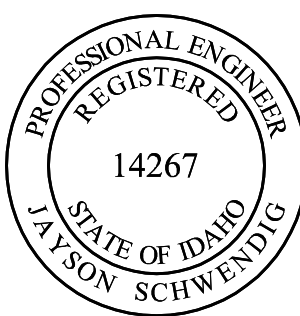
METRIC CONVERSION FACTOR:
1" = 25.4mm
1'-0" = 304.8mm



DEPARTMENT OF VETERANS AFFAIRS



2041 South Cobalt Point Way
Meridian, Idaho 83642
208-288-6100



ZGA ARCHITECTS & PLANNERS, CHARTERED



408 E. Parkcenter Blvd., Suite 205 | Boise, Idaho 83706 | t: (208) 345.8872 | f: (208) 343.7182 | www.zga.com

CAD FILE NAME:
531CSI102_FP002
XREF FILE NAME:
x\Abord.dwg
531CSI102XGRID
531CSI102XOFL

DRAWING TITLE
BASEMENT
FIRE PROTECTION PLAN

APPROVED: CHIEF OF FACILITY MANAGEMENT SERVICE

APPROVED: MEDICAL CENTER DIRECTOR

PROJECT TITLE
VA RESIDENTIAL MENTAL
HEALTH FACILITY
VA-260-11-RP-0663

BUILDING NUMBER
123

LOCATION
VAMC BOISE, IDAHO

CHECKED
JB

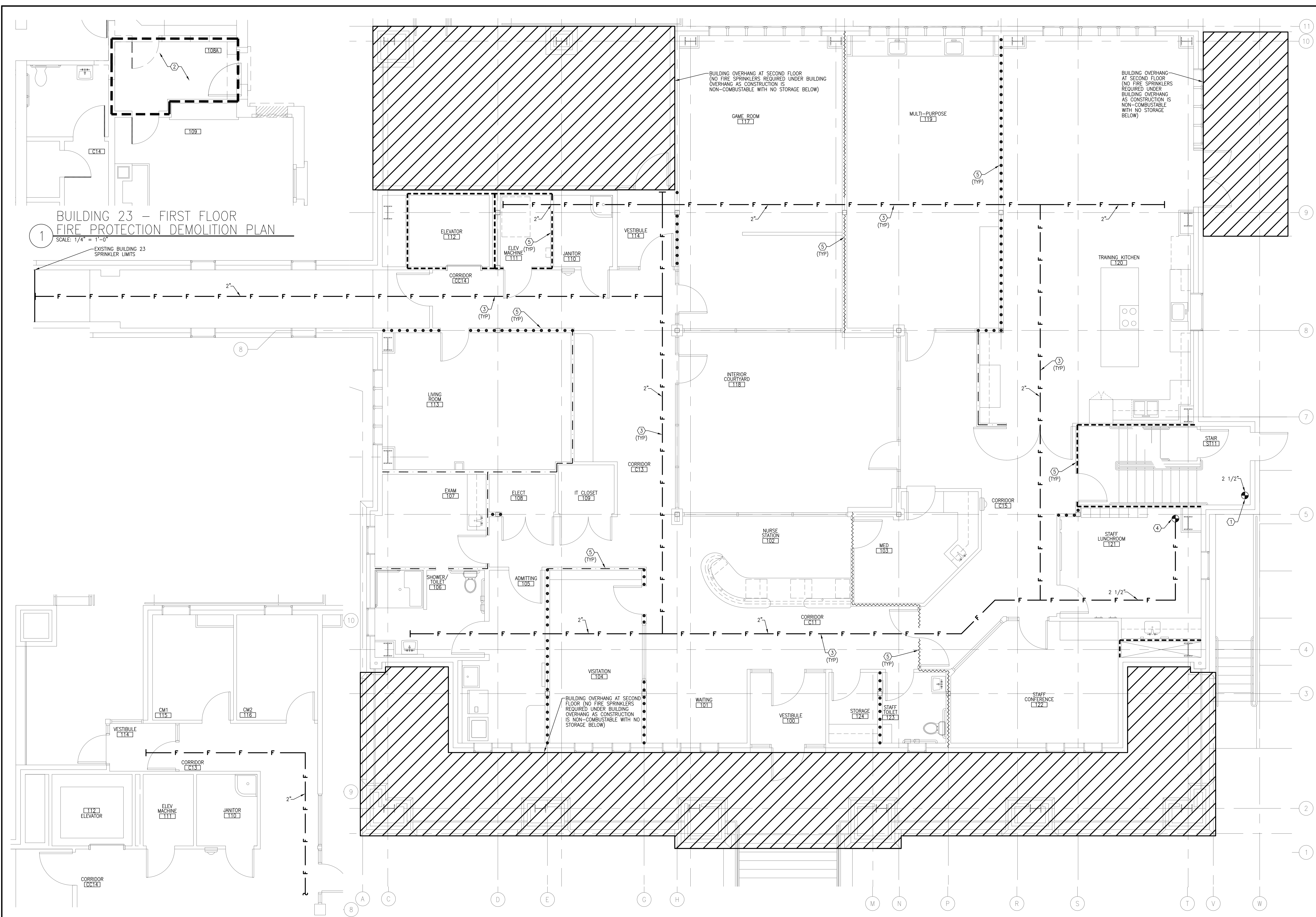
DRAWN
JA

DATE
JULY 18, '12

PROJECT NO.
531-CSI-102

DRAWING NO.
FP0.02

DWG OF

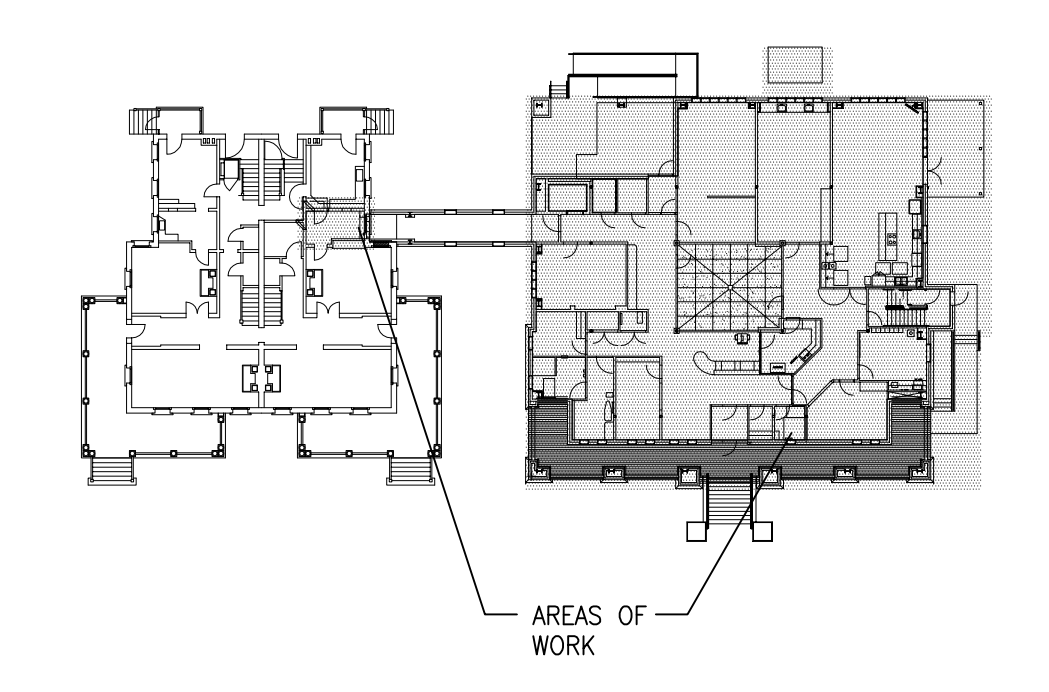


GENERAL SHEET NOTES

- A. THIS DRAWING IS INTENDED TO SHOW GENERAL INFORMATION FOR PIPE ROUTING AND SPRINKLER LOCATIONS. THE CONTRACTOR IS RESPONSIBLE FOR PRODUCING HYDRAULIC CALCULATIONS AND SHOP DRAWINGS SHOWING SPRINKLERS, PIPE, FITTINGS, OFFSETS, HANGERS, EARTHQUAKE BRACING, DEVICES, AND APPURTENANCES NECESSARY FOR A COMPLETE SYSTEM AS COORDINATED WITH OTHER TRADES AND AS APPROVED BY THE LOCAL AUTHORITY HAVING JURISDICTION.
- B. INSTALL EXPOSED ITEMS (PIPING HANGERS, EARTHQUAKE BRACING, ETC.) IN A NEAT UNIFORM MANNER THAT IS VISUALLY ORGANIZED AND FOLLOWS BUILDING LINES.
- C. MATERIAL AND EQUIPMENT IS TO BE NEW AND UL APPROVED.
- D. PIPING, FITTINGS, EARTHQUAKE BRACING, HANGERS, METHOD OF HANGING, JOINING OF PIPE AND FITTINGS SHALL BE IN ACCORDANCE WITH STATE CODES, LOCAL JURISDICTION REQUIREMENTS, NFPA 13 AND THE CONTRACT DOCUMENTS.
- E. SPRINKLER PIPING IN AREAS WITH FINISHED CEILINGS SHALL BE CONCEALED ABOVE THE OCCUPANCY CEILING OR IN WALLS. SPRINKLER PIPING IN AREAS WITH EXPOSED STRUCTURE SHALL BE INSTALLED AS CLOSE TO WALLS, CEILINGS, AND STRUCTURAL MEMBERS AS FEASIBLY POSSIBLE.
- F. SPRINKLER HEADS LOCATED IN AREAS WITH SUSPENDED CEILING TILE SHALL BE INSTALLED IN CENTER OF TILE PATTERN.
- G. REFER TO OTHER TRADE DRAWINGS FOR COORDINATION WITH MECHANICAL, ELECTRICAL, ETC.
- H. REFER TO ARCHITECTURAL PLANS FOR FINAL AREA CONFIGURATION, FINAL CEILING LAYOUT, AND SPECIFIC PROJECT PHASING.
- I. ALL FIRE ALARM PROGRAMMING MUST BE ACCOMPLISHED BY THE CURRENT VA BOISE FIRE ALARM MAINTENANCE CONTRACTOR. THE CURRENT BOISE FIRE ALARM MAINTENANCE CONTRACTOR IS FIRE SENTRY SYSTEMS, INC. 208-887-4774.
- J. NO FIRE SPRINKLERS REQUIRED IN BUILDING MANSARD AND OTHER CONCEALED VOIDS AS CONSTRUCTION IS NON-COMBUSTIBLE.
- K. PROTECT ENTIRE FIRST FLOOR AS LIGHT HAZARD PER NFPA 13 REQUIREMENTS. RESIDENTIAL SPRINKLERS ARE PERMITTED IN SEMI-PRIVATE, PRIVATE UNITS.
- SCOPE OF WORK:
A. INSTALL A FIRE SPRINKLER SYSTEM MEETING REQUIREMENTS OF NFPA 13, 2010 EDITION THROUGHOUT THE STRUCTURE.

SHEET KEYNOTES

1. 2 1/2" FIRE RISER UP FROM FLOOR BELOW AND CONTINUING UP TO SECOND FLOOR. SEE SHEETS FP0.04 AND FP0.02 FOR CONTINUATION. SERVES 2ND FLOOR SPRINKLER SYSTEM.
2. REMODEL EXISTING SPRINKLER HEADS IN THIS AREA FOR NEW REMODEL. COORDINATE AND REFERENCE WITH ARCHITECTURAL PLANS.
3. COORDINATE FIRE MAIN ROUTING WITH HVAC AND PLUMBING PLANS. NO ADDITIONAL COSTS WILL BE ALLOWED FOR CONTRACTORS FAILURE TO COORDINATE WITH SAID SYSTEMS.
4. 2 1/2" FIRE RISER UP FROM FLOOR BELOW. SEE SHEET FP0.02 FOR CONTINUATION.
5. RATED WALL ASSEMBLY. SEE ARCHITECTURAL SHEET G2.01 FOR TYPE.



FIRST FLOOR KEY PLAN
NOT TO SCALE

FINAL SET

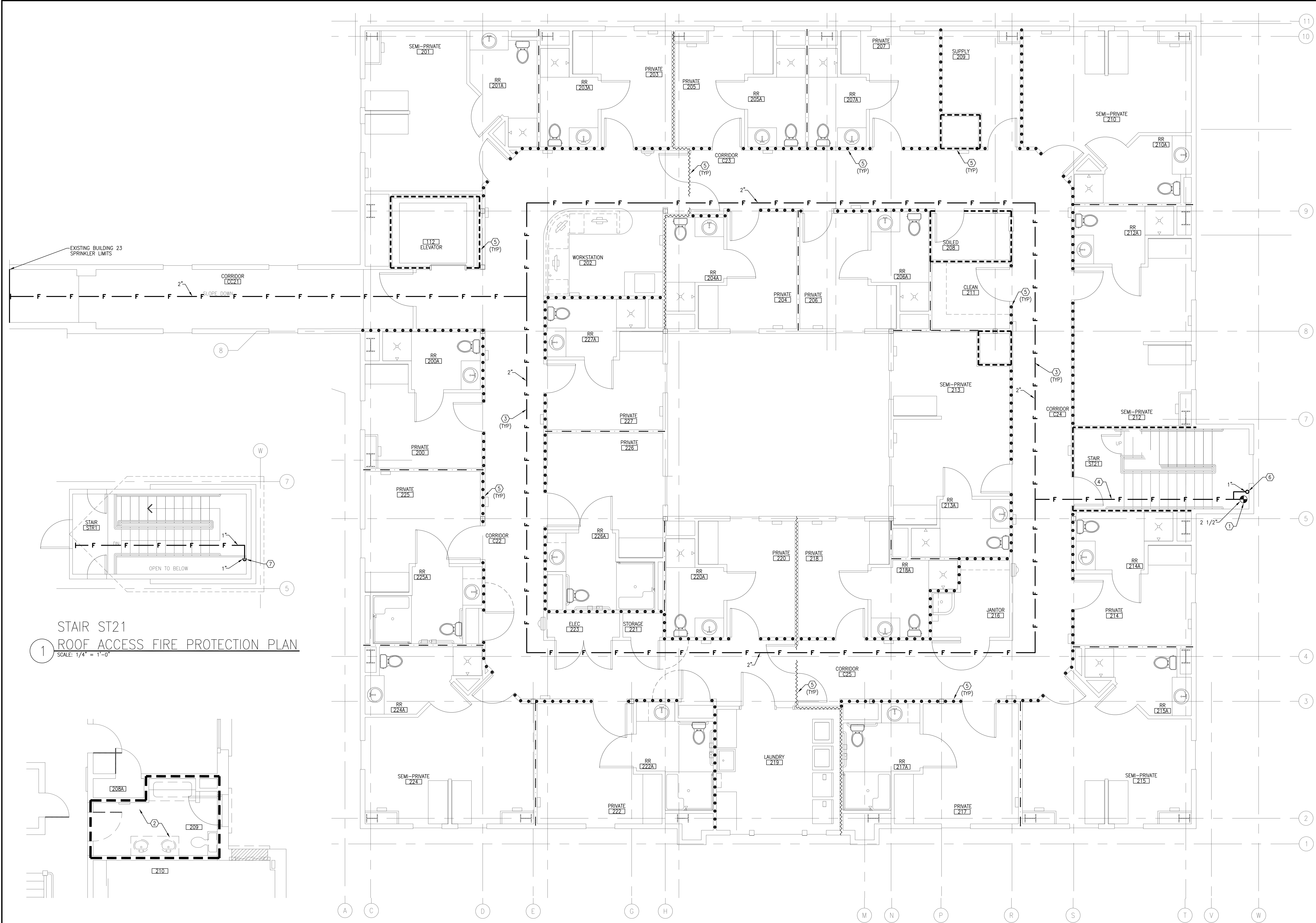
METRIC CONVERSION FACTOR:
1" = 25.4mm
1'-0" = 304.8mm



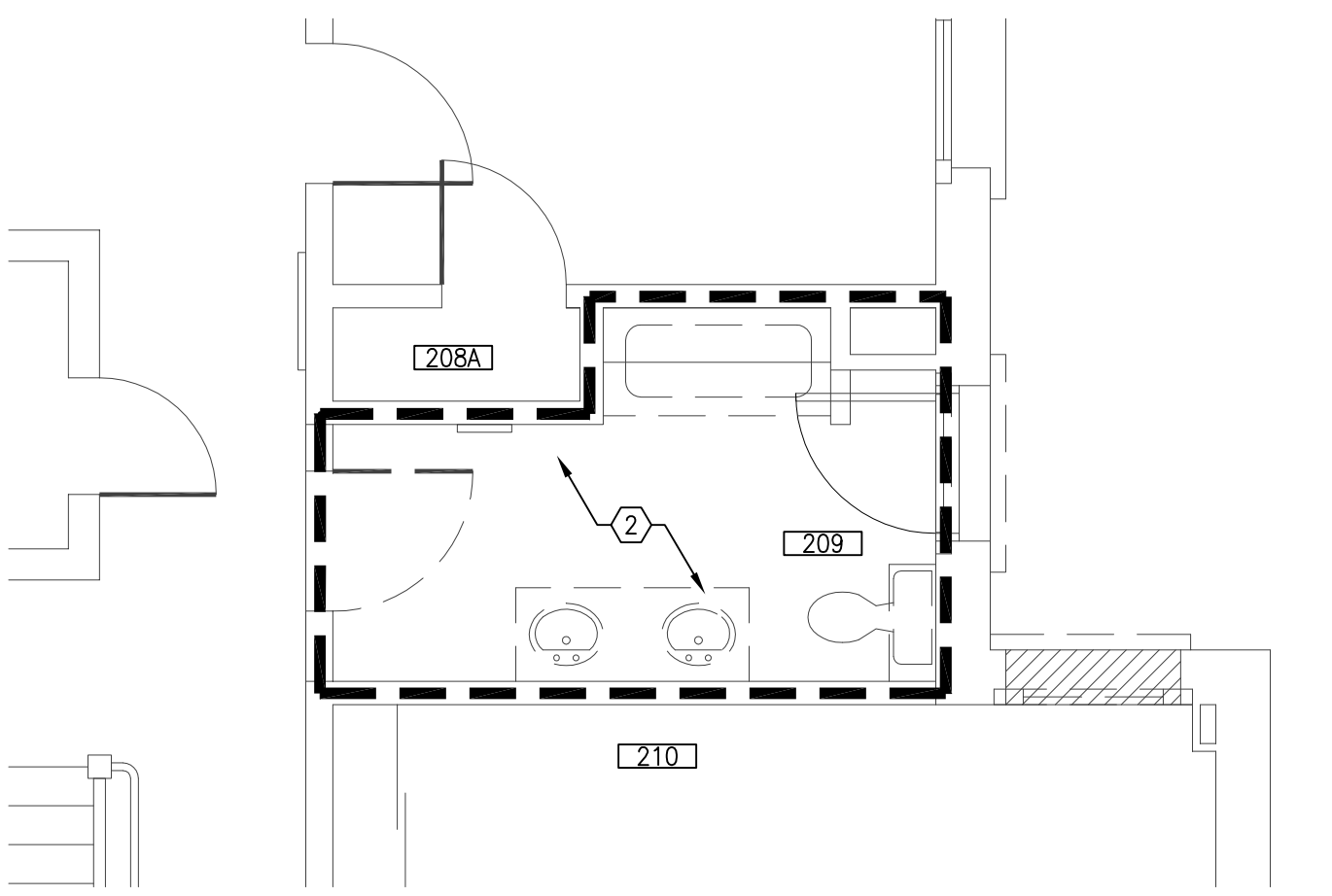
ADD ALTERNATE NUMBER 2
FIRST FLOOR FIRE PROTECTION PLAN
SCALE: 1/4" = 1'-0"

FIRST FLOOR FIRE PROTECTION PLAN
SCALE: 1/4" = 1'-0"

<div>REVISIONS</div> <div>DATE</div>	<div>POWER ENGINEERS</div> <div>2041 South Cobalt Point Way Meridian, Idaho 83642 208-288-6100</div>	<div></div> <div>PROFESSIONAL ENGINEER REGISTERED 14267 JASON SCHWENTKE STATE OF IDAHO</div>	<div>ZGA ARCHITECTS & PLANNERS, CHARTERED</div> <div>408 E. Parkcenter Blvd., Suite 205 Boise, Idaho 83706 t: (208) 345.8872 f: (208) 343.7182 www.zga.com</div>	<div>CAD FILE NAME: 531CSI102_FP003</div> <div>XREF FILE NAME: xVAford x23a1 531CSI102XGRID 531CSI102X1FL</div>	<div>DRAWING TITLE FIRST FLOOR FIRE PROTECTION PLAN</div> <div>APPROVED: CHIEF OF FACILITY MANAGEMENT SERVICE</div> <div>APPROVED: MEDICAL CENTER DIRECTOR</div>	<div>PROJECT TITLE VA RESIDENTIAL MENTAL HEALTH FACILITY VA-260-11-RP-0663</div> <div>BUILDING NUMBER 123</div> <div>CHECKED JB</div> <div>DRAWN JA</div> <div>LOCATION VAMC BOISE, IDAHO</div>	<div>DATE JULY 18, '12</div> <div>PROJECT NO. 531-CSI-102</div> <div>DRAWING NO. FP0.03</div> <div>DWG OF</div>	
--------------------------------------	--	--	--	---	---	--	---	--



1 STAIR ST21
ROOF ACCESS FIRE PROTECTION PLAN
SCALE: 1/4" = 1'-0"



2 BUILDING 23 - SECOND FLOOR
FIRE PROTECTION DEMOLITION PLAN
SCALE: 1/4" = 1'-0"

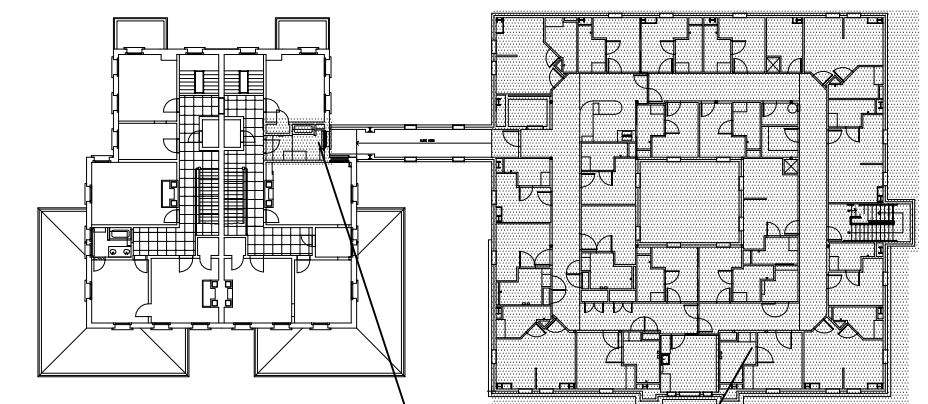
3 SECOND FLOOR FIRE PROTECTION PLAN
SCALE: 1/4" = 1'-0"

GENERAL SHEET NOTES

- THIS DRAWING IS INTENDED TO SHOW GENERAL INFORMATION FOR PIPE ROUTING AND SPRINKLER LOCATIONS. THE CONTRACTOR IS RESPONSIBLE FOR PRODUCING HYDRAULIC CALCULATIONS AND SHOP DRAWINGS SHOWING SPRINKLERS, PIPE, FITTINGS, OFFSETS, HANGERS, EARTHQUAKE BRACING, DEVICES, AND APPURTENANCES NECESSARY FOR A COMPLETE SYSTEM AS COORDINATED WITH OTHER TRADES AND AS APPROVED BY THE LOCAL AUTHORITY HAVING JURISDICTION.
 - INSTALL EXPOSED ITEMS (PIPING HANGERS, EARTHQUAKE BRACING, ETC.) IN A NEAT UNIFORM MANNER THAT IS VISUALLY ORGANIZED AND FOLLOWS BUILDING LINES.
 - MATERIAL AND EQUIPMENT IS TO BE NEW AND UL APPROVED.
 - PIPING, FITTINGS, EARTHQUAKE BRACING, HANGERS, METHOD OF HANGING, JOINING OF PIPE AND FITTINGS SHALL BE IN ACCORDANCE WITH STATE CODES, LOCAL JURISDICTION REQUIREMENTS, NFPA 13 AND THE CONTRACT DOCUMENTS.
 - SPRINKLER PIPING IN AREAS WITH FINISHED CEILINGS SHALL BE CONCEALED ABOVE THE OCCUPANCY CEILING OR IN WALLS. SPRINKLER PIPING IN AREAS WITH EXPOSED STRUCTURE SHALL BE INSTALLED AS CLOSE TO WALLS, CEILINGS, AND STRUCTURAL MEMBERS AS FEASIBLY POSSIBLE.
 - SPRINKLER HEADS LOCATED IN AREAS WITH SUSPENDED CEILING TILE SHALL BE INSTALLED IN CENTER OF TILE PATTERN.
 - REFER TO OTHER TRADE DRAWINGS FOR COORDINATION WITH MECHANICAL, ELECTRICAL, ETC.
 - REFER TO ARCHITECTURAL PLANS FOR FINAL AREA CONFIGURATION, FINAL CEILING LAYOUT, AND SPECIFIC PROJECT PHASING.
 - ALL FIRE ALARM PROGRAMMING MUST BE ACCOMPLISHED BY THE CURRENT VA BOISE FIRE ALARM MAINTENANCE CONTRACTOR. THE CURRENT BOISE FIRE ALARM MAINTENANCE CONTRACTOR IS FIRE SENTRY SYSTEMS, INC. 208-887-4774.
 - NO FIRE SPRINKLERS REQUIRED IN BUILDING MANSARD AND OTHER CONCEALED VOIDS AS CONSTRUCTION IS NON-COMBUSTIBLE.
 - PROTECT ENTIRE SECOND FLOOR AS LIGHT HAZARD PER NFPA 13 REQUIREMENTS. RESIDENTIAL SPRINKLERS ARE PERMITTED IN SEMI-PRIVATE, PRIVATE UNITS.
- SCOPE OF WORK:
- INSTALL A FIRE SPRINKLER SYSTEM MEETING REQUIREMENTS OF NFPA 13, 2010 EDITION THROUGHOUT THE STRUCTURE.

SHEET KEYNOTES

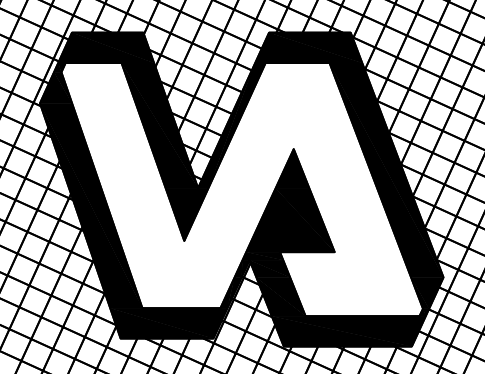
- 2 1/2" FIRE RISER UP FROM FLOOR BELOW. SEE SHEET FP0.03 FOR CONTINUATION.
- REMODEL EXISTING SPRINKLER HEADS IN THIS AREA FOR NEW REMODEL, COORDINATE AND REFERENCE WITH ARCHITECTURAL PLANS.
- COORDINATE FIRE MAIN ROUTING WITH HVAC AND PLUMBING PLANS. NO ADDITIONAL COSTS WILL BE ALLOWED FOR CONTRACTORS FAILURE TO COORDINATE WITH SAID SYSTEM.
- KEEP TIGHT TO UNDERSIDE OF STAIRS AND LANDING.
- RATED WALL ASSEMBLY. SEE ARCHITECTURAL SHEET G2.01 FOR TYPE.
- RISE UP TO ROOF ACCESS WITH SPRINKLER RISER. SEE STAIR ST21 ROOF ACCESS FIRE PROTECTION PLAN THIS SHEET FOR CONTINUATION.
- FIRE RISER DOWN TO SECOND FLOOR. SEE THIS SHEET FOR CONTINUATION.



SECOND FLOOR KEY PLAN
NOT TO SCALE

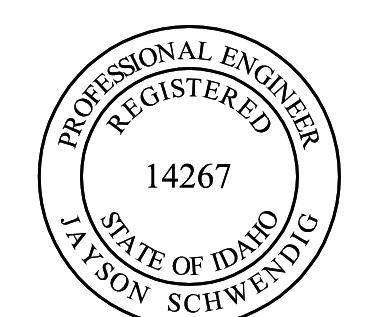
FINAL SET

METRIC CONVERSION FACTOR:
1" = 25.4mm
1'-0" = 304.8mm



REVISIONS	DATE

POWER ENGINEERS
2041 South Cobalt Point Way
Meridian, Idaho 83642
208-288-6100



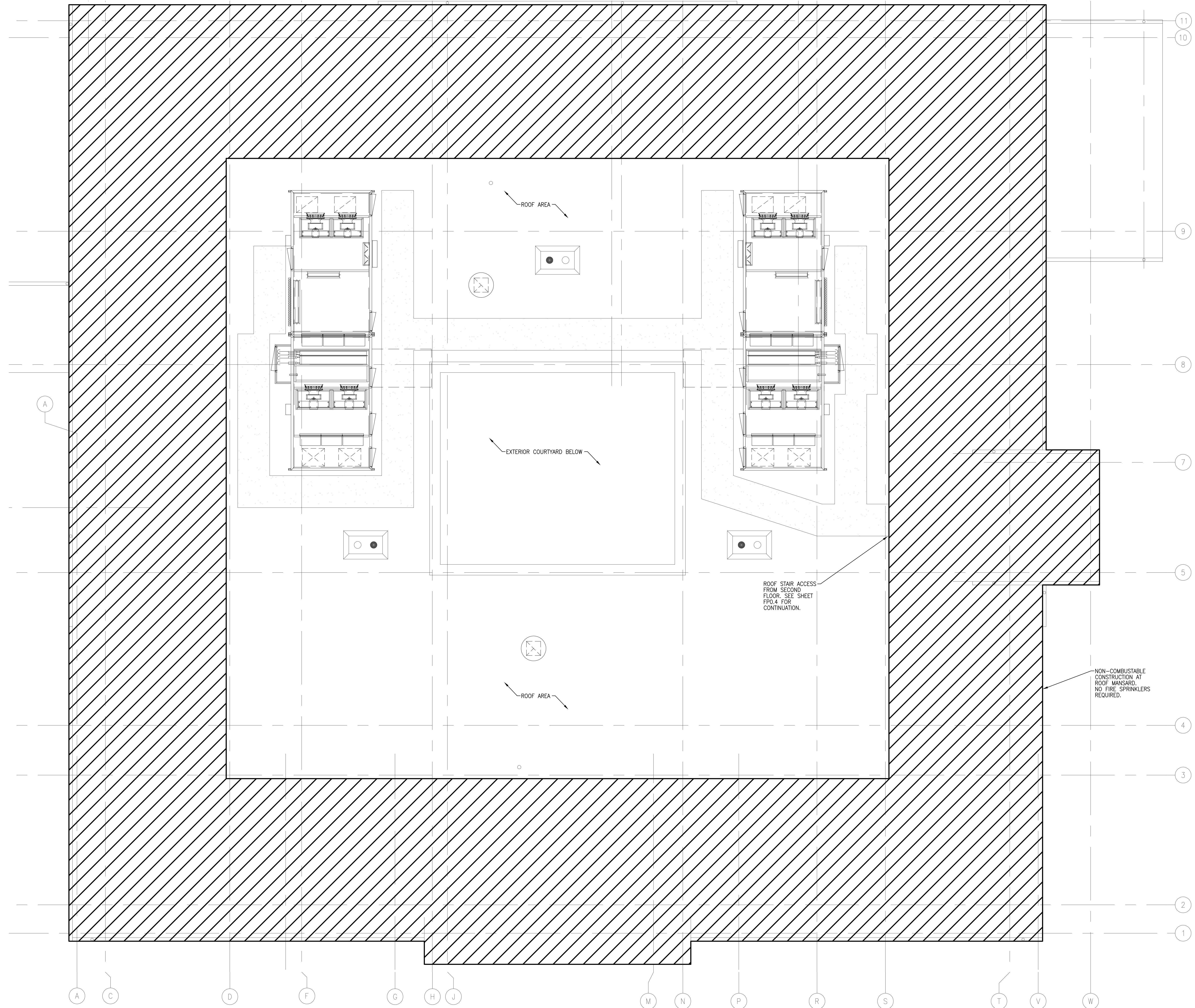
ZGA ARCHITECTS & PLANNERS, CHARTERED
408 E. Parkcenter Blvd., Suite 205 | Boise, Idaho 83706 | t: (208) 345.8872 | f: (208) 343.7182 | www.zga.com

CAD FILE NAME:
531CSI102_FP004
XREF FILE NAME:
x\Abord
x23a2
531CSI102XGRID
531CSI102X2FL

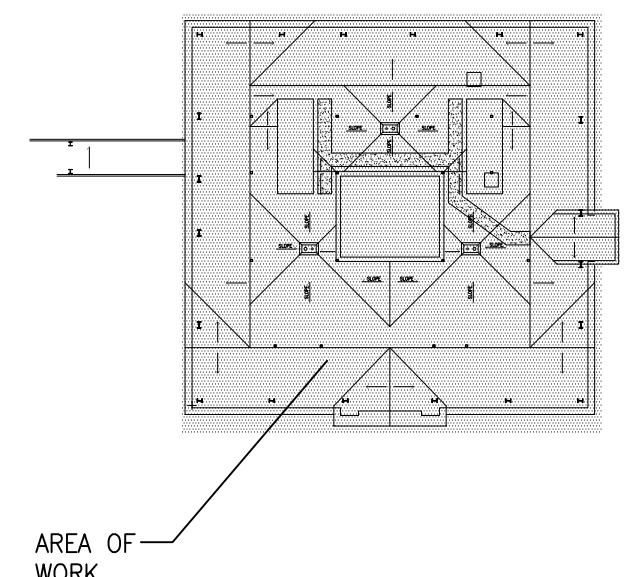
DRAWING TITLE
SECOND FLOOR FIRE PROTECTION PLAN
APPROVED: CHIEF OF FACILITY MANAGEMENT SERVICE
APPROVED: MEDICAL CENTER DIRECTOR

PROJECT TITLE
VA RESIDENTIAL MENTAL HEALTH FACILITY VA-260-11-RP-0663
BUILDING NUMBER
123
CHECKED
JB
DRAWN
JA
LOCATION
VAMC BOISE, IDAHO

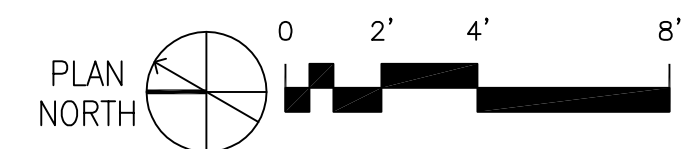
DATE
JULY 18, '12
PROJECT NO.
531-CSI-102
DRAWING NO.
FP0.04
DWG
OF



1 ROOF FIRE PROTECTION PLAN
SCALE: 1/4" = 1'-0"



ROOF KEY PLAN
NOT TO SCALE
PLAN NORTH



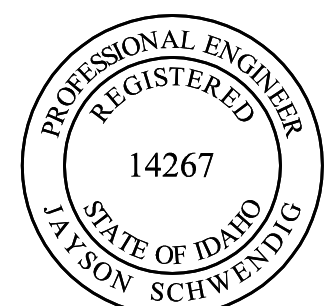
FINAL SET

METRIC CONVERSION FACTOR:
1" = 25.4mm
1'-0" = 304.8mm



REVISIONS	DATE

POWER ENGINEERS
2041 South Cobalt Point Way
Meridian, Idaho 83642
208-288-6100



ZGA ARCHITECTS & PLANNERS, CHARTERED
408 E. Parkcenter Blvd., Suite 205 | Boise, Idaho 83706 | t: (208) 345.8872 | f: (208) 343.7162 | www.zga.com

CAD FILE NAME:
531CSI102_FP005
XREF FILE NAME:
531CSI102XGRID
531CSI102XRFL
xVAbord
x23aR

DRAWING TITLE ROOF FIRE PROTECTION PLAN	
APPROVED: CHIEF OF FACILITY MANAGEMENT SERVICE	
APPROVED: MEDICAL CENTER DIRECTOR	

PROJECT TITLE VA RESIDENTIAL MENTAL HEALTH FACILITY VA-260-11-RP-0663		
BUILDING NUMBER 123	CHECKED JB	DRAWN JA
LOCATION VAMC BOISE, IDAHO		

DATE JULY 18, '12
PROJECT NO. 531-CSI-102
DRAWING NO. FP0.05
DWG OF