

**1 OVERALL SITE PLAN – ELECTRICAL ROUTING**  
SCALE: 1" = 150'

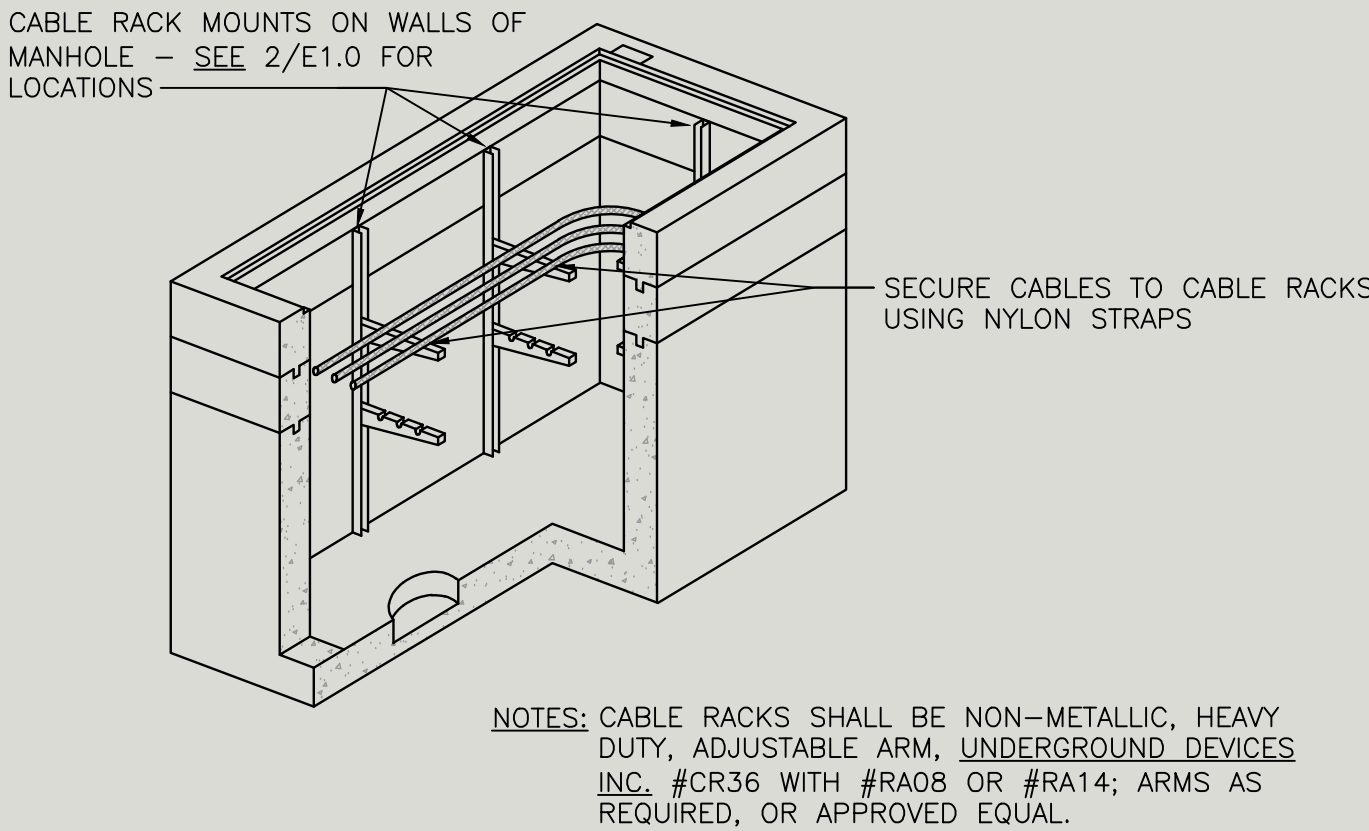
**RECORD DRAWING DISCLAIMER**  
THIS RECORD DRAWING HAS BEEN PREPARED, IN PART, BASED UPON INFORMATION FURNISHED BY OTHERS. WHILE THIS INFORMATION IS BELIEVED TO BE RELIABLE, SUNPOWER ASSUMES NO RESPONSIBILITY TO THE ACCURACY OF THIS RECORD DRAWING OR FOR ANY ERRORS OR OMISSIONS THAT MAY HAVE BEEN INCORPORATED INTO IT AS A RESULT OF INCORRECT INFORMATION PROVIDED TO SUNPOWER. THOSE RELYING ON THIS RECORD DOCUMENT ARE ADVISED TO OBTAIN INDEPENDENT VERIFICATION OF ITS ACCURACY.

8/1/2013 10:49 AM

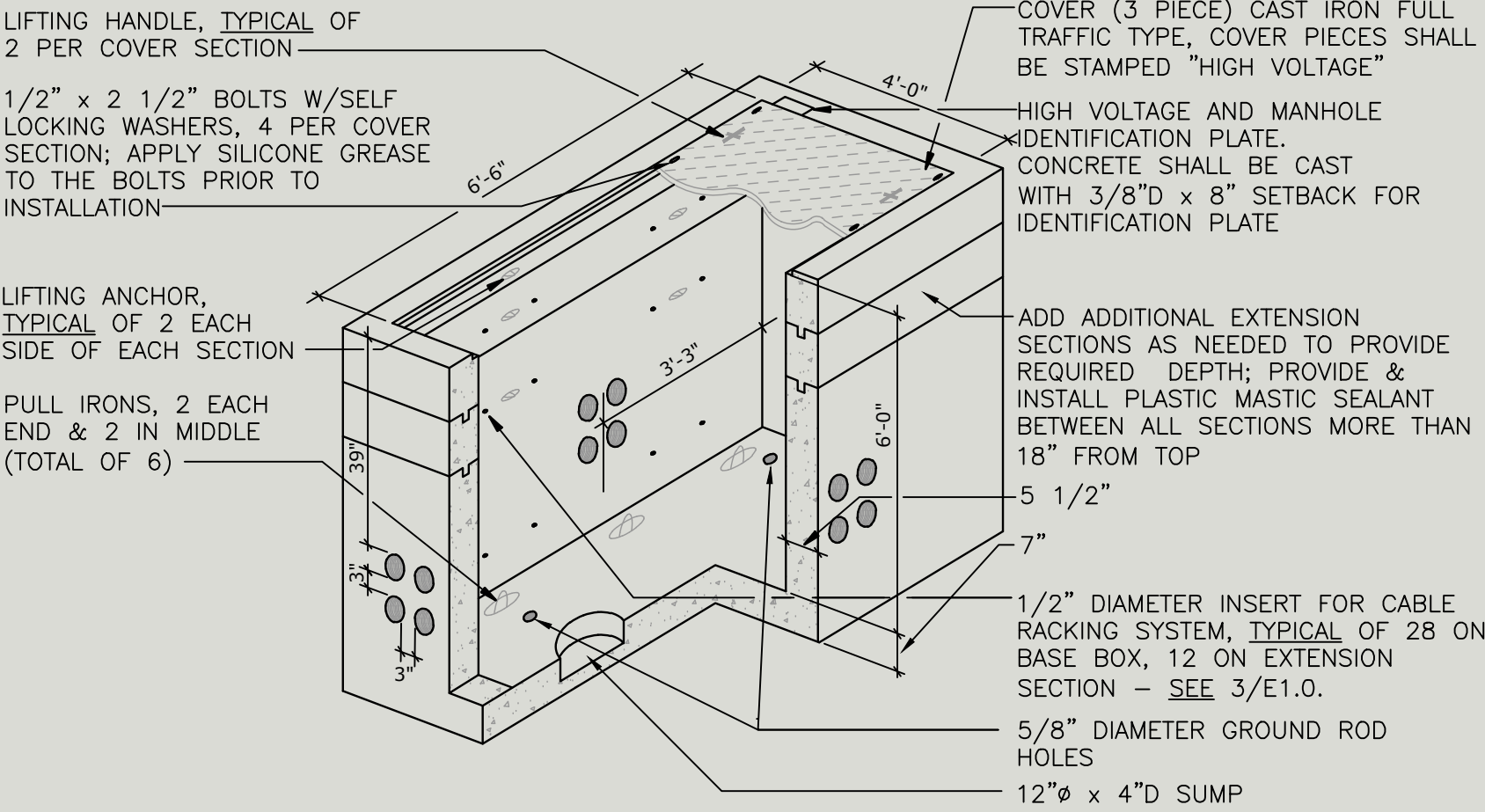
LEGEND	
	NEW RGS CONDUIT INSIDE BUILDING – AC CONDUIT (4.8KV)
	NEW TRENCH – AC CONDUIT (4.8KV) – SEE 2/E6.3
	NEW LINE BORE – AC CONDUIT (4.8KV) – SEE 1/E6.3
	EXISTING SPARE 4" DUCT – AC CONDUIT (4.8KV)
	FLUSH IN-GROUND MANHOLE – AC (4.8KV)
	GENERAL EQUIPMENT PAD LOCATIONS – SEE E5 SERIES SHEETS FOR DETAILED LAYOUTS

- NUMBERED SHEET NOTES:**
- UTILIZE SPARE 4" RACEWAY IN 5KV DUCT BANK FOR NEW PV FEEDER. SEE 1-LINE DIAGRAM E2.0. SPARE 4" RACEWAY CONFIRMED BY VA STAFF ON 3/31/11.
  - NEW 4" SCHEDULE 40 PVC, LINE BORED UNDER EXISTING SURFACES, MIN 36" DEPTH. COORDINATE EXACT ROUTE WITH VA PRIOR TO BORING.
  - UTILIZE (2) SPARE 4" RACEWAYS IN 5KV DUCT BANK FOR NEW PV FEEDER. SEE 1-LINE DIAGRAM E2.0. SPARE 4" RACEWAYS CONFIRMED BY VA STAFF ON 3/31/11.
  - NEW 4" SCHEDULE 40 PVC, LINE BORED UNDER EXISTING PARKING AND DRIVEWAYS/ROADWAYS TO EXISTING MANHOLE. COORDINATE EXACT ROUTE WITH VA PRIOR TO BORING.
  - (2) NEW 4" SCHEDULE 40 PVC, LINE BORED UNDER EXISTING SURFACE TO EXISTING MANHOLE. COORDINATE EXACT ROUTE WITH VA PRIOR TO BORING.
  - NEW 4" SCHEDULE 40 PVC, TRENCHED BETWEEN NEW AND EXISTING MANHOLE VAULTS. HAND EXCAVATE AT EXISTING MANHOLES TO FACILITATE PENETRATION AND ENTRY INTO MANHOLE VAULT. RE-GROUT AND SEAL ALL NEW PENETRATIONS INTO VAULTS.
  - PROVIDE AND INSTALL NEW 4" RGS IN/THROUGH (E) ELECTRICAL ROOM TO CONNECT (E) SITE CONDUIT STUB-OUTS AT EACH END OF ROOM.
  - NEW 4" SCHEDULE 40 PVC, TRENCHED OR LINE BORED BETWEEN (E) MANHOLE VAULTS – SEE E6.3. HAND EXCAVATE AT EXISTING MANHOLES TO FACILITATE PENETRATION AND ENTRY INTO MANHOLE VAULT. RE-GROUT AND SEAL ALL NEW PENETRATIONS INTO VAULTS. COORDINATE EXACT ROUTE WITH VA PRIOR TO BORING/TRENCHING.

- GENERAL NOTES:**
- FIELD VERIFY AND LOCATE ALL EXISTING UNDERGROUND UTILITIES AND/OR OTHER OBSTRUCTIONS PRIOR TO DIGGING IN EACH AREA.
  - SEE 1-LINE DIAGRAM E2.0 FOR ELECTRICAL DISTRIBUTION REQUIREMENTS AND RELATED EQUIPMENT.
  - SEE EQUIPMENT PAD LAYOUTS (E5 SERIES SHEETS) FOR EQUIPMENT PAD LAYOUTS AND LOCATIONS.



**3 CABLE RACKING DETAIL**  
SCALE: NO SCALE



**2 NEW MANHOLE DETAIL**  
SCALE: NO SCALE

SUNPOWER

1414 HARBOUR WAY SOUTH  
RICHMOND, CA 94804  
(510) 540-0650

REGISTERED PROFESSIONAL ENGINEER  
PIETER J. COLEBRANDER  
No. 14738  
Exp. 6/13  
ELECTRICAL  
STATE OF CALIFORNIA

ENGINEER'S STAMP

VETERANS AFFAIRS  
SEPULVEDA AMBULATORY CARE

16111 PLUMMER ST.  
NORTH HILLS, CA 91343

OVERALL SITE PLAN –  
ELECTRICAL ROUTING

REV	QUOTE #	DATE	DB	CB
1	-	8/2/13	JK	PC
2				
3				
4				
5				
6				
7				
8				

OPPORTUNITY	113470
PROJECT	10897
DATE DRAWN	06-24-2011
DRAWN BY	

0 1/2" 1"

IF BAR IS NOT ONE INCH, DRAWING IS NOT TO SCALE

SHEET

E1.0

8/1/2013 10:49 AM

10897\_E1.0\_SITE PLAN.DWG