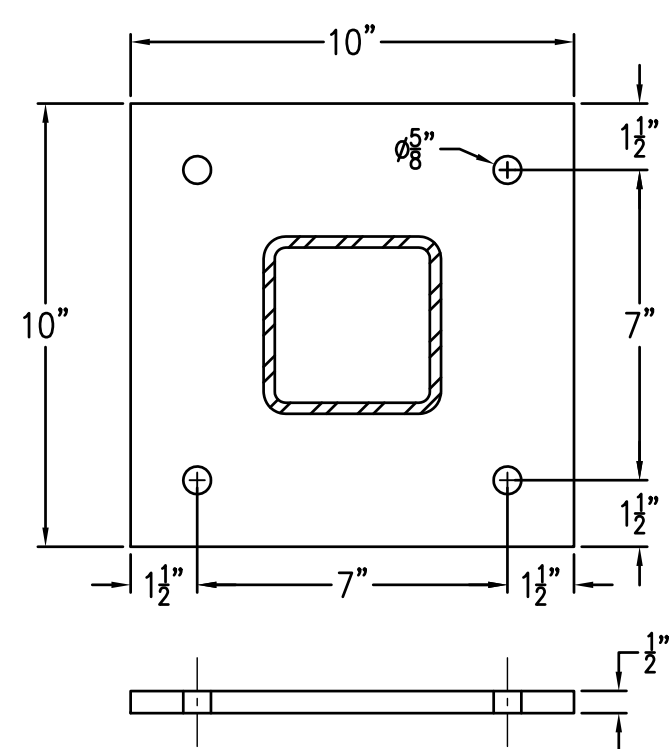
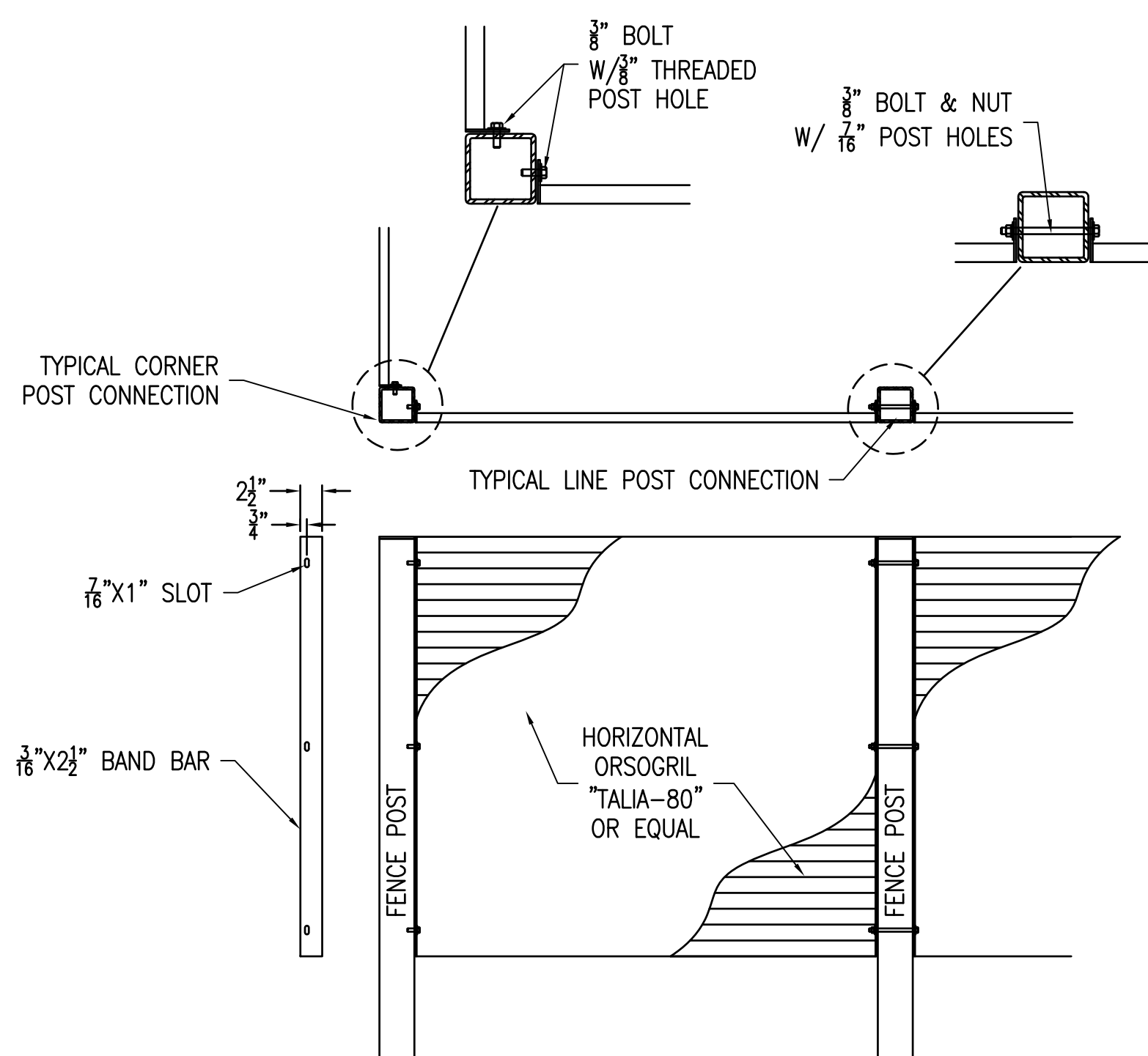


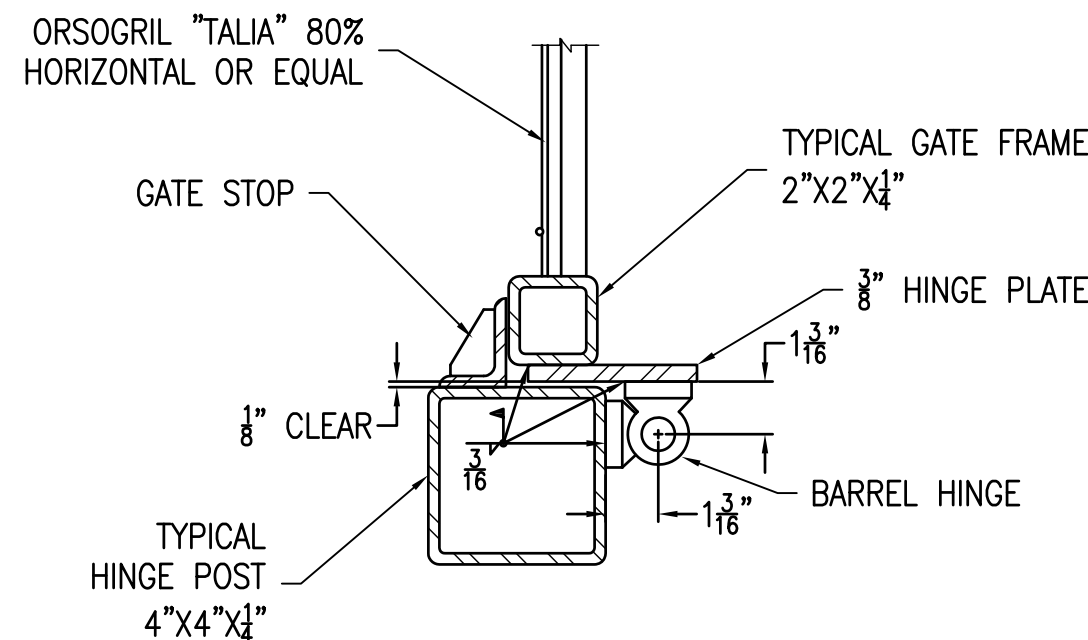
A2 MECHANICAL YARD CONCRETE PAD DETAIL
CS504 N.T.S.



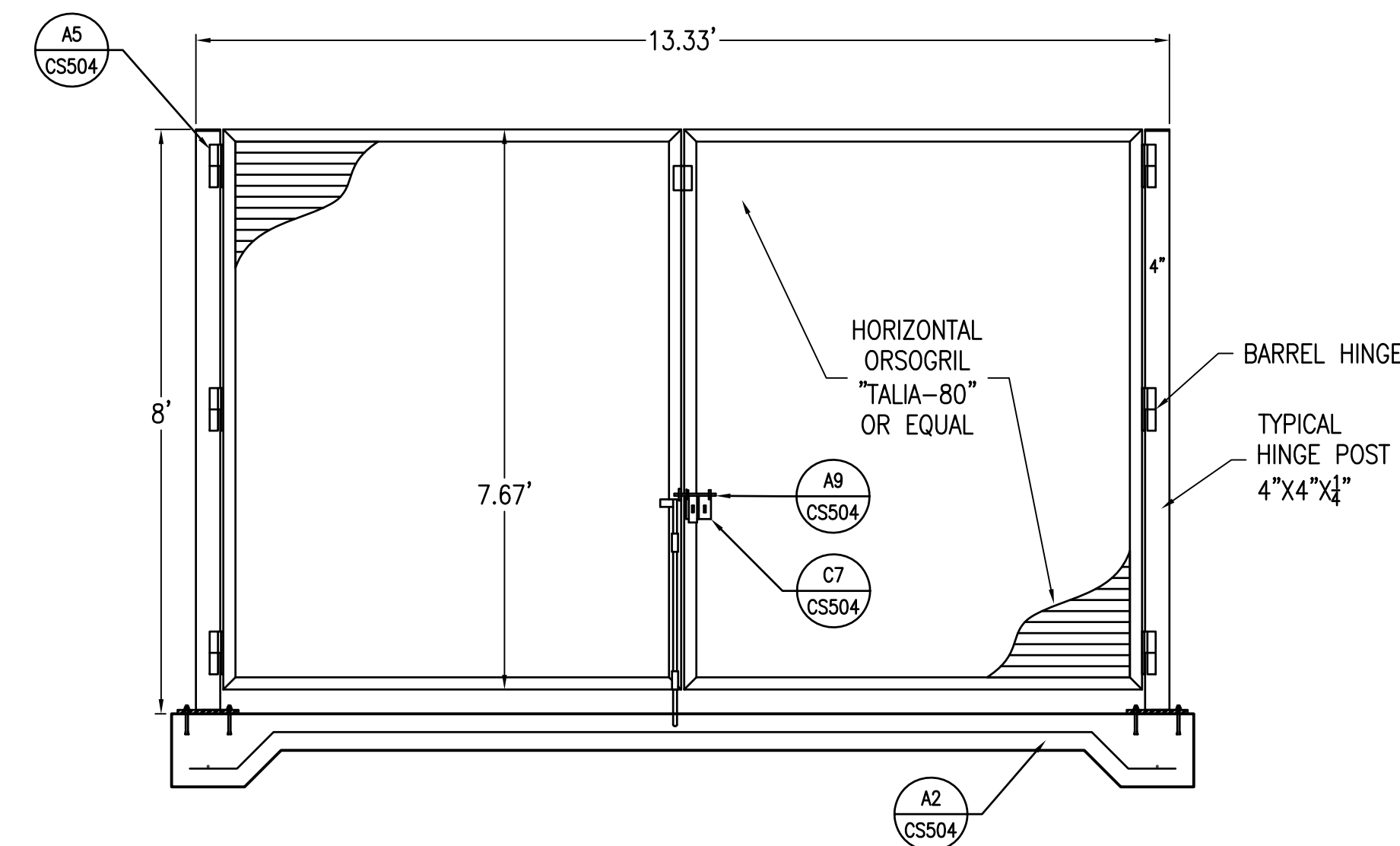
B2 TYPICAL BASE PLATE DETAIL
CS504 N.T.S.



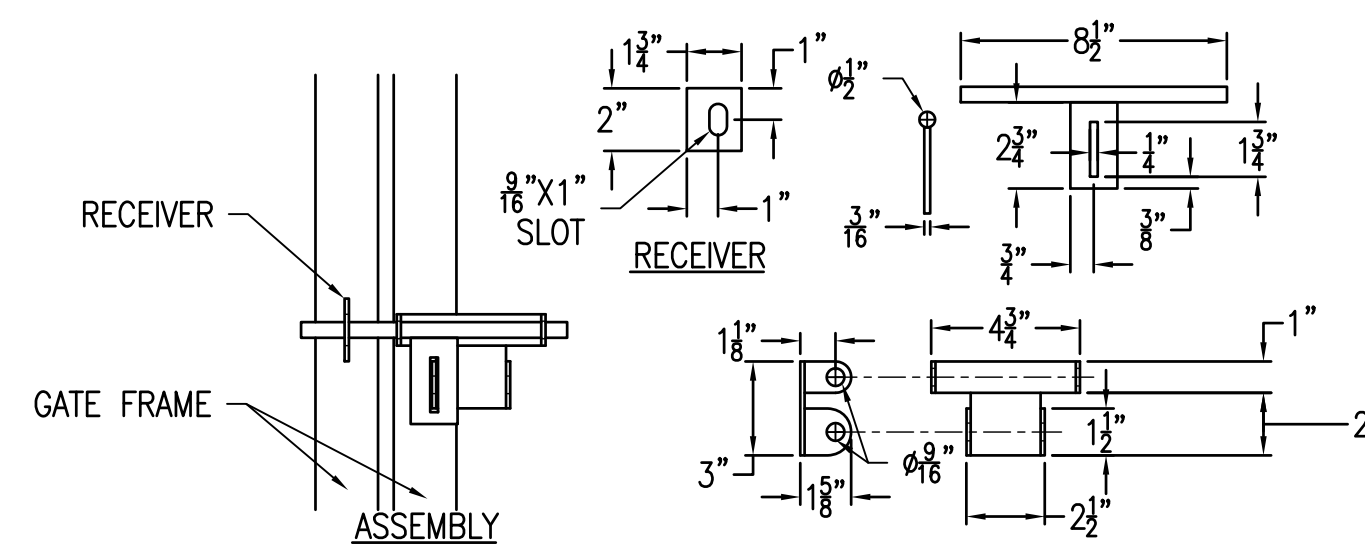
F5 LOUVER PANELS TO POST CONNECTION DETAIL
CS504 N.T.S.



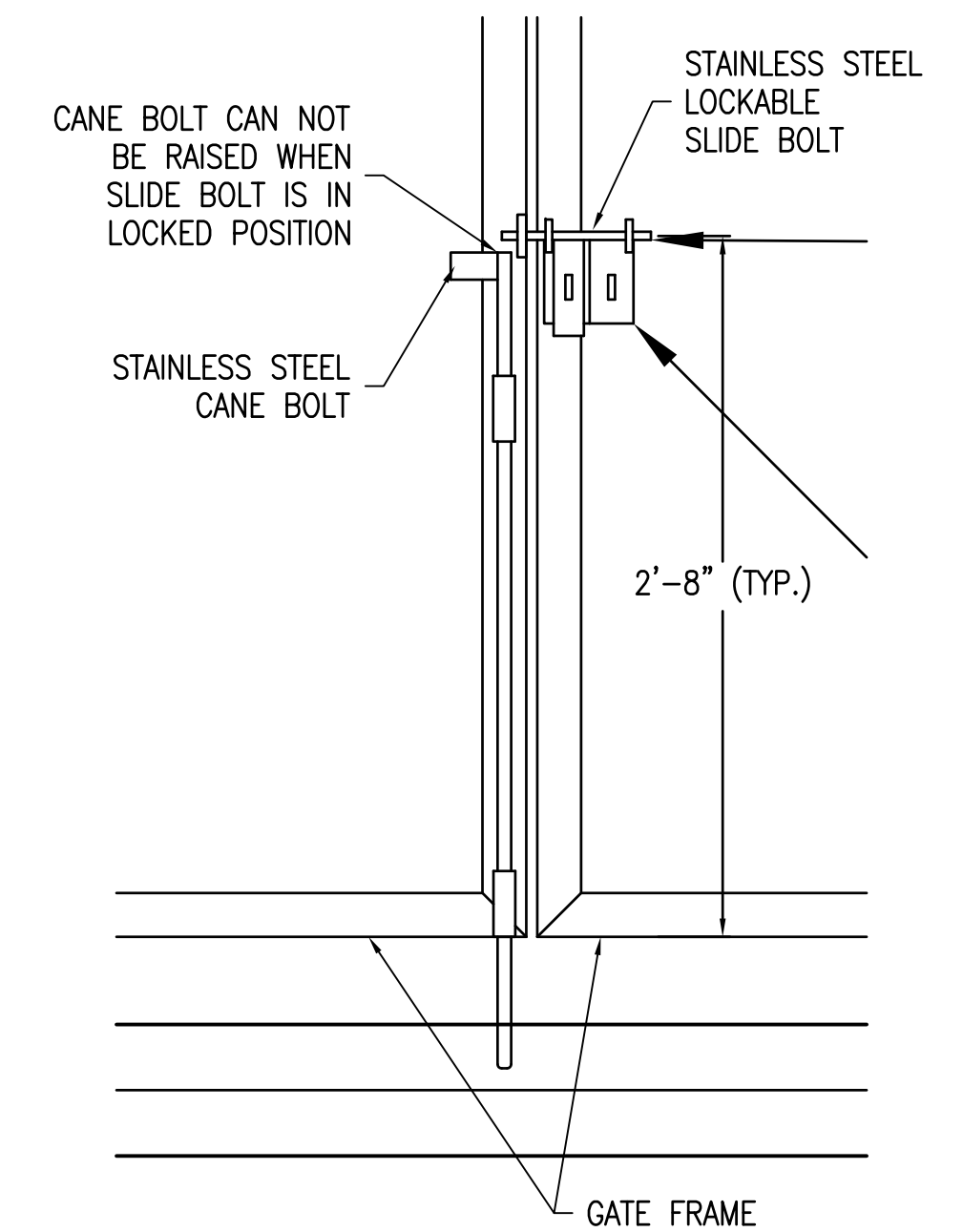
A4 GATE HINGE DETAIL
CS504 N.T.S.



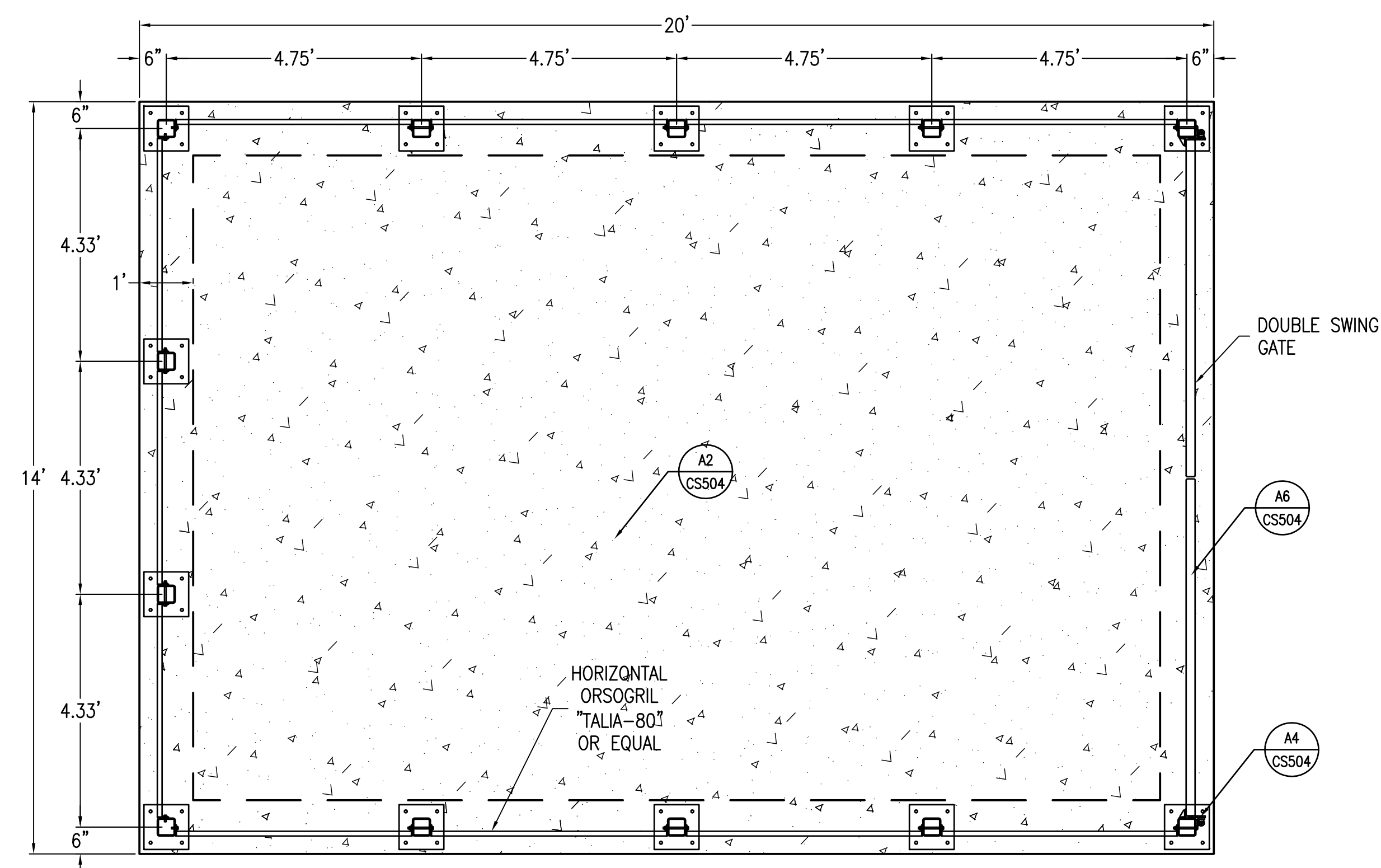
A6 GATE DETAIL
CS504 N.T.S.



C7 LOCKABLE SLIDE HASP
CS504 N.T.S.



A9 BOLT VERTICAL CANE
CS504 N.T.S.



F7 NAVY MECHANICAL YARD WITH ENCLOSURE
CS101 N.T.S.

FINAL SUBMISSION
APRIL 6, 2012

IF SHEET IS LESS THAN (30"x42") IT IS
A REDUCED PRINT; SCALE ACCORDINGLY

CS504

BES DESIGN/BUILD 3766 MIDCO ST., FARMHOPPE, AL 36532 251-990-5778 ARCH. & ENGINEERING KHA FL PROFESSIONAL ENGINEER CERT. #8268	NATURAL RESOURCES & ENVIRONMENTAL AFFAIRS		P.W. DWG. NO.		DEPARTMENT OF THE NAVY NAVAL SUPPORT ACTIVITY PANAMA CITY, FLORIDA	
	SAFETY DEPARTMENT		DRAWN BY LRR		PANAMA CITY JOINT OUTPATIENT CLINIC NAVAL GULF COAST HEALTH CARE	
	FIRE DEPARTMENT		CHECKED BY KCH		SITE DETAILS	
	PUBLIC WORKS SUPERVISOR		SUPERVISOR KCH		N/A	
APPROVED		DATE		SCALE N.T.S.		MACC.
PUBLIC WORKS OFFICER				CONSTR. CONTR. NO.		T.O.#
				SHEET 8 OF 14		