

**LEGEND:**

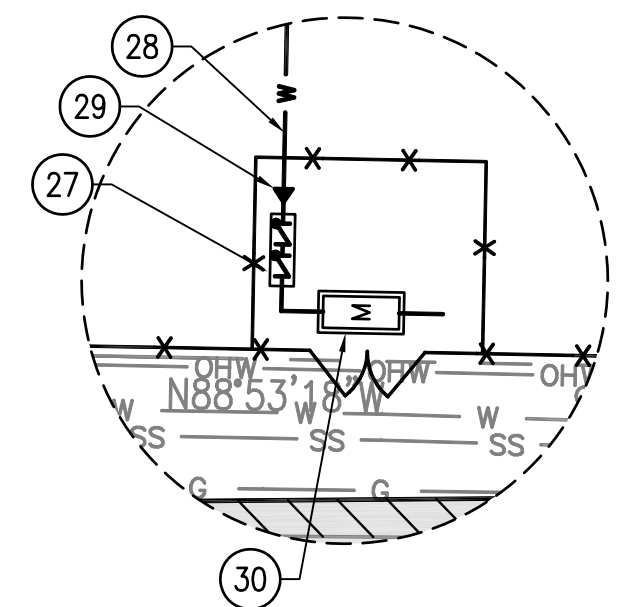
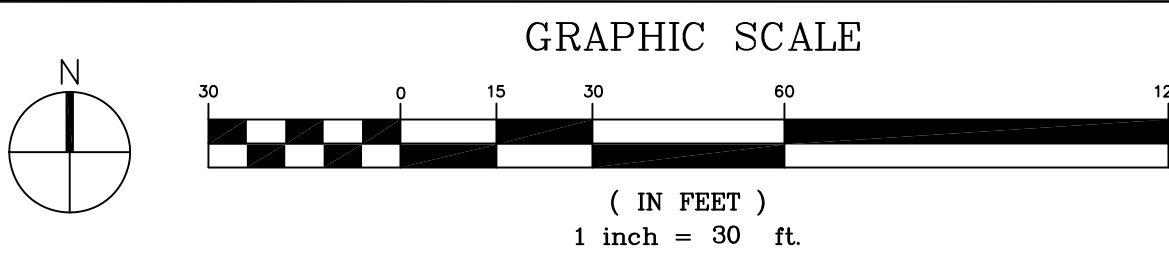
- EXISTING PROPERTY LINE
- EXISTING FENCE
- NEW FENCE
- EXISTING WOODLINE/VEGETATION
- NEW WOODLINE/VEGETATION
- EXISTING WATERLINE
- NEW WATER LINE
- NEW 8" FIRE LINE
- EXISTING GAS LINE
- NEW GAS LINE
- EXISTING SANITARY SEWER FORCE MAIN
- NEW SANITARY SEWER FORCE MAIN
- NEW STORM WATER LINE
- EXISTING OVERHEAD UTILITIES
- GTV, GATE VALVE
- PIV, POST INDICATOR VALVE
- FH, FIRE HYDRANT
- ST, STORM
- CLEAN-OUT
- FDOT TYPE "E" INLET
- WATER METER

**KEY NOTES:**

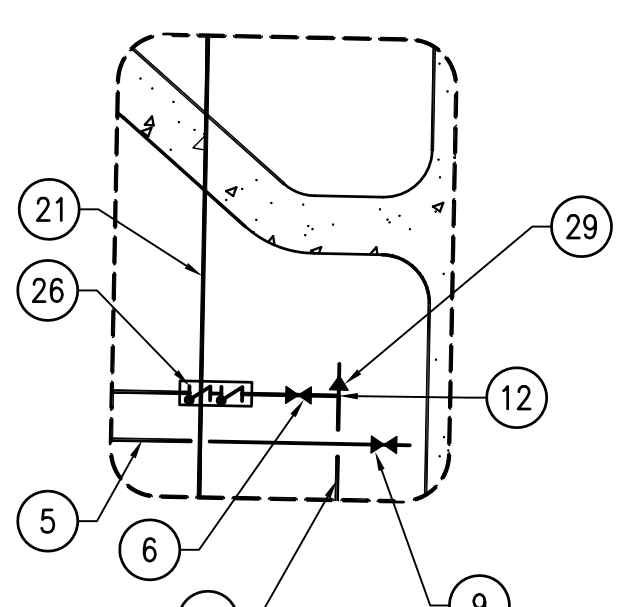
- (NOT USED)
- (NOT USED)
- INSTALL 2" PVC DOMESTIC WATERLINE.
- (NOT USED)
- INSTALL 8" AWWA C900 DR18 PVC FIRE LINE.
- INSTALL 2" GTV. (C8/CU501)
- (NOT USED)
- INSTALL 6" GTV. (C8/CU501)
- INSTALL 8" GTV. (C8/CU501 WITHIN PROPERTY) OR \* (E5/CU502 AT THE PUBLIC R/W)
- INSTALL 6" PIV. (C3/CU501)
- INSTALL 6" AWWA C900 DR18 PVC FIRELINE.
- INSTALL 4"x2" TEE.
- INSTALL 8"x6" TEE.
- INSTALL 6" FIRE HYDRANT. (E3/CU501)
- (NOT USED)
- (NOT USED)
- INSTALL 2" PE GAS LINE.
- (NOT USED)
- (NOT USED)
- (NOT USED)
- INSTALL 6" ASTM 3034 PVC SANITARY SEWER LATERAL @ 1.0%.
- INSTALL CLEAN-OUT (E8/CU501).
- (NOT USED)
- (NOT USED)
- INSTALL 8"x6" REDUCER.
- INSTALL 2" RPZ BFP WITH INSULATED ENCLOSURE. (A2/CU502)
- INSTALL 3" RPZ BFP WITH INSULATED ENCLOSURE. (A5/CU502)
- INSTALL 4" PVC DOMESTIC WATERLINE..
- INSTALL REDUCER AS REQUIRED.
- INSTALL 3" METER & METER VAULT. WATER METER SHALL BE SIZED FOR 273 FIXTURE UNITS, 3" MINIMUM. (E8/CU502)
- (NOT USED)
- (NOT USED)
- CLOSELY COORDINATE UTILITY LOCATIONS WITH STRUCTURAL FOOTINGS.
- FIRE DEPARTMENT CONNECTION. (SEE SHEET FP101)

**NOTES:**

- ROOF LEADER STORMWATER PIPING AND STRUCTURES ARE SHOWN FOR UTILITY COORDINATION ONLY. FOR DETAILED STORMWATER DESIGN, SEE SHEET CG101.
- SANITARY SEWER FORCE MAIN THAT IS PARALLEL AND HAS LESS THAN 10' IN HORIZONTAL SEPARATION FROM WATER LINE, SHALL BE INSTALLED 18" MINIMUM DEEPER THAN WATERLINE.



ENLARGED PLAN C9  
N.T.S.



ENLARGED PLAN D9  
N.T.S.

MAGNOLIA BEACH ROAD  
COUNTY ROAD 392-B  
60' PUBLIC R/W

FINAL SUBMISSION  
APRIL 6, 2012

IF SHEET IS LESS THAN (30"x42") IT IS  
A REDUCED PRINT; SCALE ACCORDINGLY

**CU102**

NOTE:  
SEE SHEET CU101 FOR OVERALL UTILITY  
REFERENCE.

 766 MOBILE ST., FARMHOPE, AL 36532 251-990-5778 ARCH. & ENGINEERING KHA FL PROFESSIONAL ENGINEER CERT. #8268	NATURAL RESOURCES & ENVIRONMENTAL AFFAIRS SATISFACTORY TO DATE	P.W. DWG. NO.	DEPARTMENT OF THE NAVY NAVAL FACILITIES ENGINEERING COMMAND NAVAL SUPPORT ACTIVITY PANAMA CITY, FLORIDA
	SAFETY DEPARTMENT SATISFACTORY TO DATE	DRAWN BY LRR	<b>PANAMA CITY JOINT OUTPATIENT CLINIC NAVAL GULF COAST HEALTH CARE UTILITY PLAN</b>
	FIRE DEPARTMENT SATISFACTORY TO DATE	CHECKED BY KCH	
	PUBLIC WORKS SUPERVISOR SATISFACTORY TO DATE	SUPERVISOR KCH	
		APPROVED DATE	SIZE F
			CODE IDENT. NO. N/A
			CONSTR. CONTR. NO. N/A
			SCALE 1" = 30'