

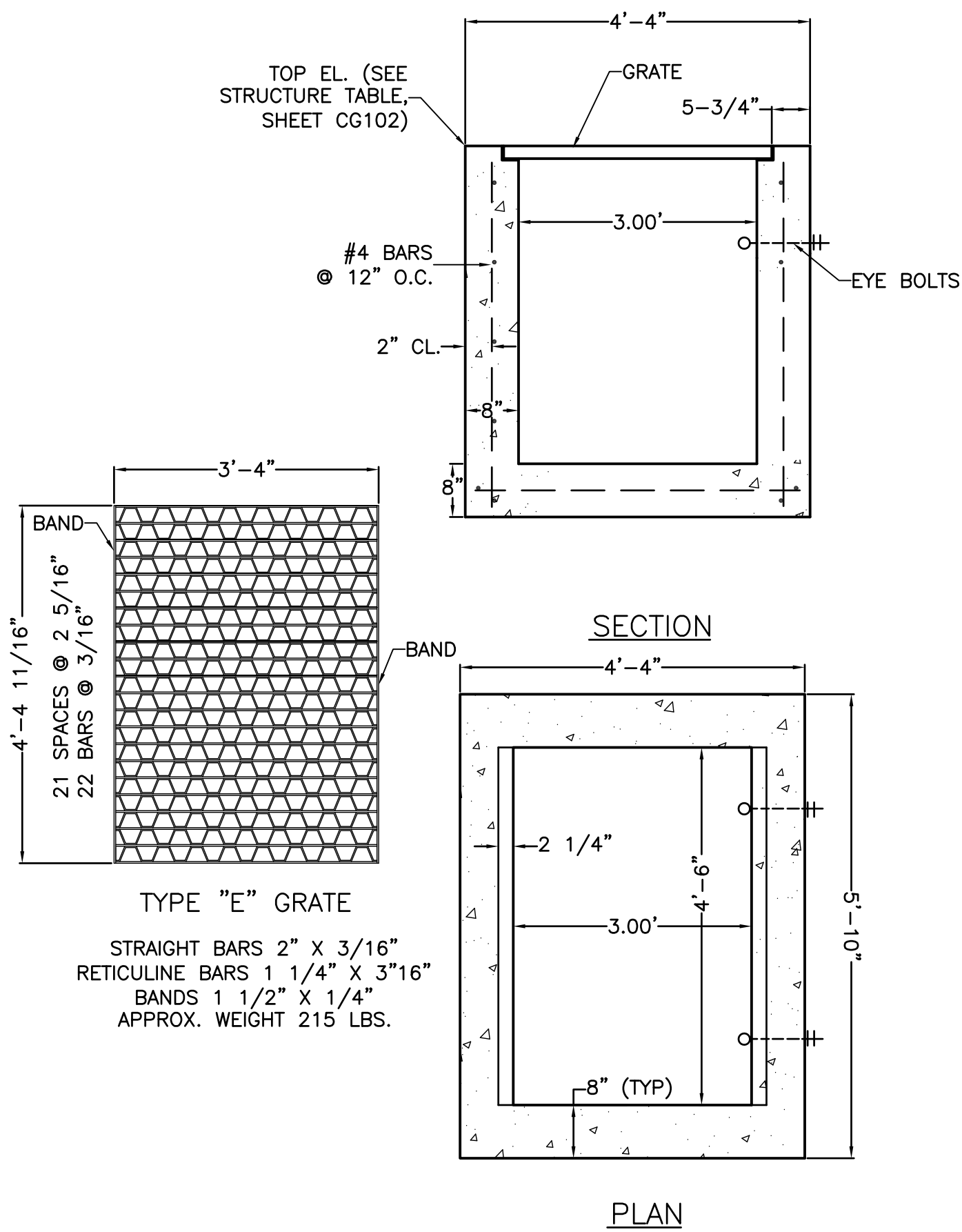
STORMWATER STRUCTURE TABLE		
STRUCTURE NAME:	DETAILS:	LOCATION
S1	TYPE "E" INLET TOP = 15.74 INV OUT = 12.74 (P1)	N: 423673.0026 E: 1575285.4660
S2 N.I.C.	TYPE "4" CURB INLET TOP = 16.32 INV IN = 12.37 (P1) INV OUT = 12.27 (P2)	N: 423730.0364 E: 1575232.7275
S3	TYPE "E" INLET TOP = 15.84 INV OUT = 11.50 (P3)	N: 423670.0602 E: 1575437.1110
S4	TYPE "E" INLET TOP = 16.46 INV IN = 11.20 (P3) INV IN = 11.30 (P25) INV OUT = 11.10 (P4)	N: 423726.0496 E: 1575438.1974
S5 N.I.C.	TYPE "E" INLET TOP = 15.75 INV IN = 10.45 (P4) INV IN = 10.45 (P9) INV OUT = 9.95 (P5)	N: 423723.7217 E: 1575558.1748
S6 N.I.C.	TYPE "E" INLET TOP = 14.50 INV IN = 8.80 (P5) INV IN = 9.30 (P11) INV OUT = 8.70 (P6)	N: 423719.5739 E: 1575771.9410
S7 N.I.C.	TYPE "4" CURB INLET TOP = 14.88 INV IN = 8.25 (P6) INV OUT = 8.15 (P7)	N: 423717.9153 E: 1575857.4249
S8 N.I.C.	TYPE "E" BUBBLE-UP TOP = 11.67 INV IN = 8.00 (P7) INV IN = 8.00 (P12)	N: 423712.2337 E: 1575883.7396
S9 N.I.C.	TYPE "C" INLET TOP = 15.50 INV OUT = 12.50 (P8)	N: 423831.7279 E: 1575523.2670
S10 N.I.C.	TYPE "E" INLET TOP = 16.02 INV IN = 11.42 (P8) INV OUT = 11.32 (P9)	N: 423779.7111 E: 1575559.2612
S11 N.I.C.	TYPE "C" INLET TOP = 15.00 INV OUT = 12.00 (P10)	N: 423855.1218 E: 1575736.8918

STORMWATER STRUCTURE TABLE		
STRUCTURE NAME:	DETAILS:	LOCATION
S12 N.I.C.	TYPE "E" INLET TOP = 14.79 INV IN = 11.42 (P10) INV OUT = 10.32 (P11)	N: 423775.5634 E: 1575773.0273
S13 N.I.C.	TYPE "E" INLET TOP = 14.50 INV IN = 11.41 (P2) INV OUT = 11.50 (P12)	N: 423802.5501 E: 1575868.6489
S14 N.I.C.	TYPE "4" CURB INLET TOP = 16.71 INV IN = 11.41 (P2) INV OUT = 11.31 (P13)	N: 423909.4839 E: 1575248.5326
S15 N.I.C.	TYPE "E" BUBBLE-UP TOP = 13.67 INV IN = 10.00 (P13)	N: 423963.5552 E: 1575250.5203
S16	TYPE "C" INLET TOP = 16.00 INV OUT = 13.00 (P14)	N: 423904.7948 E: 1575443.8599
S17 N.I.C.	TYPE "C" INLET TOP = 16.00 INV IN = 12.36 (P14) INV OUT = 12.26 (P15)	N: 423950.6200 E: 1575453.1465
S18 N.I.C.	TYPE "4" CURB INLET TOP = 16.78 INV IN = 11.76 (P15) INV OUT = 11.66 (P16)	N: 423955.3835 E: 1575414.7473
S19 N.I.C.	TYPE "E" BUBBLE-UP TOP = 13.67 INV IN = 10.00 (P16)	N: 423998.3174 E: 1575389.1348
S20 N.I.C.	TYPE "E" OUTFALL TOP = 15.50 INV OUT = 12.00 (P17)	N: 424050.6482 E: 1575400.1750
S21 N.I.C.	TYPE "E" INLET TOP = 16.35 INV IN = 11.57 (P17) INV OUT = 11.46 (P18)	N: 424090.2504 E: 1575449.2251
S22 N.I.C.	TYPE "3" CURB INLET TOP = 16.11 INV IN = 9.77 (P18) INV OUT = 9.66 (P19)	N: 424107.6701 E: 1575676.2446

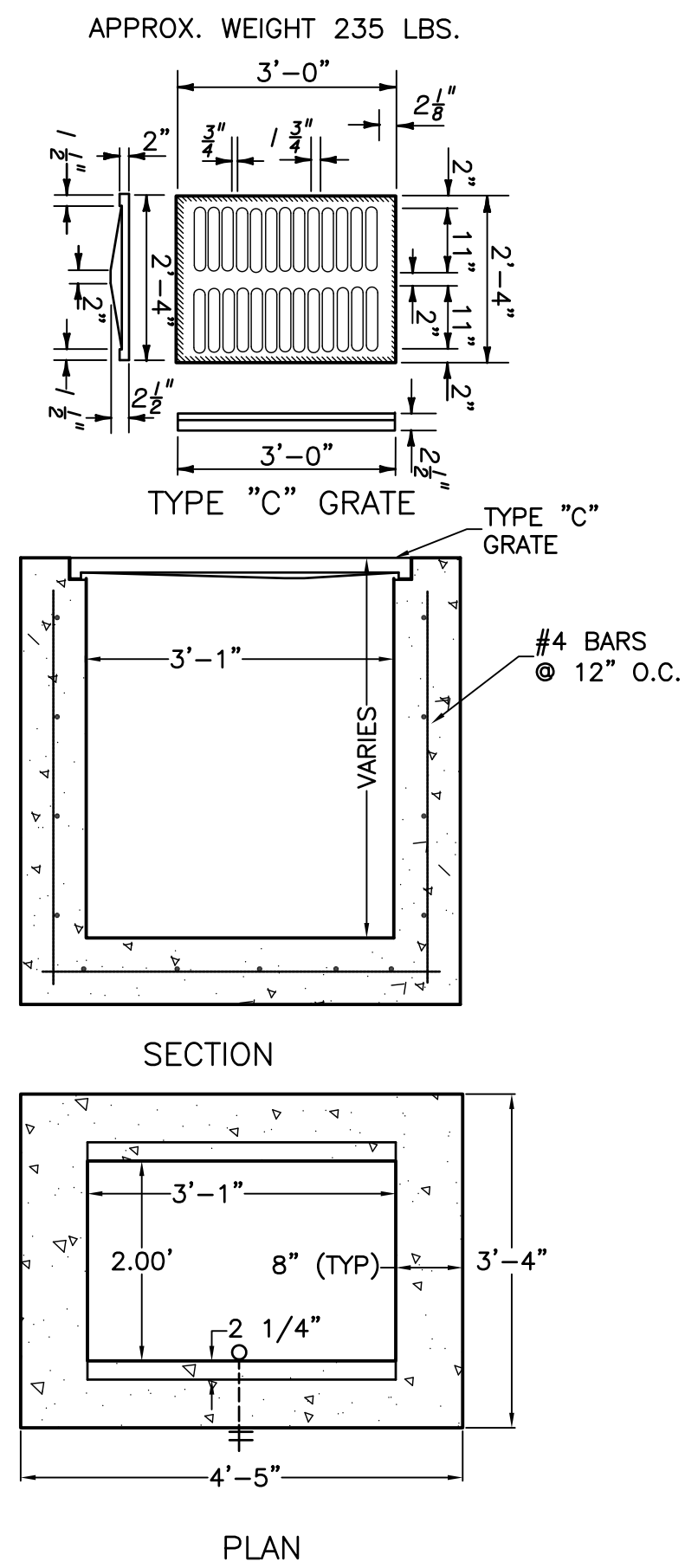
STORMWATER STRUCTURE TABLE		
STRUCTURE NAME:	DETAILS:	LOCATION
S23 N.I.C.	TYPE "4" CURB INLET TOP = 14.88 INV IN = 11.42 (P19) INV OUT = 8.25 (P20)	N: 424077.6308 E: 1575850.1391
S24 N.I.C.	TYPE "E" BUBBLE-UP TOP = 11.67 INV IN = 8.00 (P20) INV IN = 8.00 (P24)	N: 424072.5148 E: 1575861.0788
S25 N.I.C.	MITERED END SECTION TOP = 13.65 INV OUT = 11.00 (P21)	N: 423762.1265 E: 1575932.8768
S26 * DEDUCTIVE ALTERNATE N.I.C.	TYPE "E" INLET TOP = 14.50 INV IN = 11.00 (P21) INV OUT = 11.00 (P22)	N: 423788.2916 E: 1575933.3844
S27 * DEDUCTIVE ALTERNATE N.I.C.	TYPE "E" INLET TOP = 14.50 INV IN = 11.00 (P22) INV OUT = 11.00 (P23)	N: 423981.9152 E: 1575937.1414
S28 N.I.C.	MITERED END SECTION TOP = 13.65 INV IN = 11.00 (P23)	N: 424023.3003 E: 1575937.9444
S29 N.I.C.	TYPE "E" INLET TOP = 14.50 INV OUT = 11.50 (P24)	N: 423983.1761 E: 1575872.1536
S30	TYPE "C" INLET TOP = 16.50 INV OUT = 12.50 (P25)	N: 423783.3460 E: 1575457.3196

STORMWATER PIPE TABLE			
NAME	SIZE/TYPE	LENGTH	SLOPE
P1	18 INCH RCP	78'	0.48%
P2 N.I.C.	18 INCH RCP	180'	0.48%
P3	18 INCH RCP	56'	0.54%
P4	18 INCH RCP	120'	0.54%
P5 N.I.C.	24 INCH RCP	214'	0.54%
P6 N.I.C.	24 INCH RCP	85'	0.53%
P7 N.I.C.	24 INCH RCP	27'	0.56%
P8 N.I.C.	18 INCH RCP	63'	1.71%
P9 N.I.C.	18 INCH RCP	56'	1.55%
P10 N.I.C.	18 INCH RCP	87'	0.66%
P11 N.I.C.	18 INCH RCP	56'	1.82%
P12 N.I.C.	18 INCH RCP	92'	3.82%
P13 N.I.C.	18 INCH RCP	54'	2.42%
P14	18 INCH RCP	47'	1.37%
P15 N.I.C.	18 INCH RCP	39'	1.29%
P16 N.I.C.	18 INCH RCP	50'	3.32%
P17 N.I.C.	24 INCH RCP	63'	0.69%
P18 N.I.C.	24 INCH RCP	228'	0.75%
P19 N.I.C.	24 INCH RCP	176'	0.74%
P20 N.I.C.	24 INCH RCP	31'	0.80%

STORMWATER PIPE TABLE			
NAME	SIZE/TYPE	LENGTH	SLOPE
P21 N.I.C.	24 X 38.00 INCH ERCP	78'	0.00%
P22 N.I.C.	24 X 38.00 INCH ERCP	194'	0.00%
P23 N.I.C.	24 X 38.00 INCH ERCP	41'	0.00%
P24 N.I.C.	18 INCH RCP	90'	3.90%
P25	18 INCH RCP	60'	1.99%



B2 FDOT TYPE "E" INLET DETAIL
CG101 N.T.S.
CG102



B3 FDOT TYPE "C" INLET DETAIL
CG101 N.T.S.
CG102

FINAL SUBMISSION
APRIL 6, 2012

IF SHEET IS LESS THAN (30"x42") IT IS
A REDUCED PRINT; SCALE ACCORDINGLY

CG102

 766 MOBILE ST., FARMHOPPE, AL 36532 251-990-5778 ARCH. & ENGINEERING KENNETH L. HARRIS PROFESSIONAL ENGINEER KHA FL CERT. #8268	NATURAL RESOURCES & ENVIRONMENTAL AFFAIRS SATISFACTORY TO DATE	P.W. DWG. NO.	DEPARTMENT OF THE NAVY NAVAL FACILITIES ENGINEERING COMMAND NAVAL SUPPORT ACTIVITY PANAMA CITY, FLORIDA
	SAFETY DEPARTMENT SATISFACTORY TO DATE	DRAWN BY LRR	PANAMA CITY JOINT OUTPATIENT CLINIC NAVAL GULF COAST HEALTH CARE
	FIRE DEPARTMENT SATISFACTORY TO DATE	CHECKED BY KCH	STORMWATER STRUCTURE TABLES AND DETAILS
	PUBLIC WORKS SUPERVISOR SATISFACTORY TO DATE	SUPERVISOR KCH	SIZE F
		APPROVED DATE	CONSTR. CONTR. NO. N/A
	PUBLIC WORKS OFFICER	SCALE N.T.S.	MACC. T.O.# SHEET 14 OF 14