



LEGEND:

- 2 X 2 ACOUSTICAL TILE
SUSP GYP BRD CEILING
HVAC SUPPLY
HVAC RETURN
EXHAUST FAN

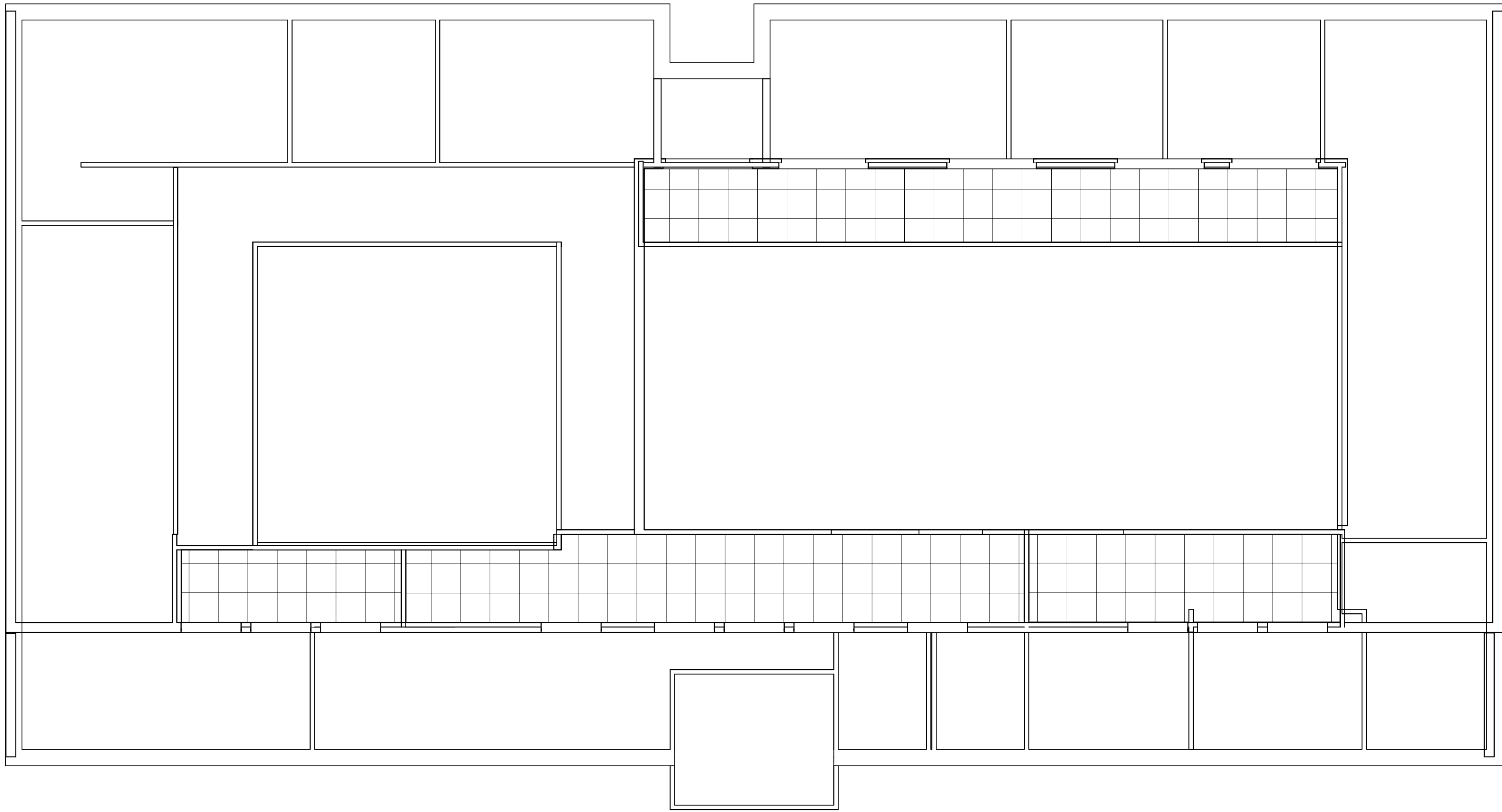
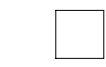
NOTES:

1. ALL SUSPENDED ACOUSTICAL TILE CEILINGS SHALL BE 8'-2" AFF EXCEPT WHERE NOTED
2. COORDINATE GRID WITH ELECTRICAL AND HVA
3. ALL HEADERS AT 10' CEILINGS SHALL BE 9'-8" AFF.

1
A-140

FIRST FLOOR RCP

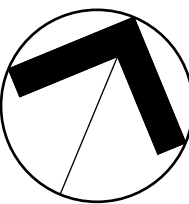
SCALE: 3/16" = 1'-0"



2
A-140

2nd FLOOR RCP

SCALE: 3/16" = 1'-0"



FINAL SUBMISSION
MARCH 2012

IF SHEET IS LESS THAN (30"x42") IT IS
A REDUCED PRINT; SCALE ACCORDINGLY

A140

 766 MIDDLE ST., FAIRHOPE, AL 36532 251-590-5778 ARCH. & ENGR. SEAL 		<table><tr><td colspan="2">NATURAL RESOURCES & ENVIRONMENTAL AFFAIRS</td></tr><tr><td>SATISFACTORY TO DATE</td><td></td></tr><tr><td colspan="2">SAFETY DEPARTMENT</td></tr><tr><td>SATISFACTORY TO DATE</td><td></td></tr><tr><td colspan="2">FIRE DEPARTMENT</td></tr><tr><td>SATISFACTORY TO DATE</td><td></td></tr><tr><td colspan="2">PUBLIC WORKS SUPERVISOR</td></tr><tr><td>SATISFACTORY TO DATE</td><td></td></tr></table>		NATURAL RESOURCES & ENVIRONMENTAL AFFAIRS		SATISFACTORY TO DATE		SAFETY DEPARTMENT		SATISFACTORY TO DATE		FIRE DEPARTMENT		SATISFACTORY TO DATE		PUBLIC WORKS SUPERVISOR		SATISFACTORY TO DATE		<table><tr><td colspan="2">P.W. DWG. NO.</td></tr><tr><td colspan="2">DRAWN BY RWC</td></tr><tr><td colspan="2">CHECKED BY WWB</td></tr><tr><td colspan="2">SUPERVISOR WWB</td></tr><tr><td>APPROVED</td><td>DATE</td></tr><tr><td colspan="2">PUBLIC WORKS OFFICER</td></tr></table>		P.W. DWG. NO.		DRAWN BY RWC		CHECKED BY WWB		SUPERVISOR WWB		APPROVED	DATE	PUBLIC WORKS OFFICER		<table><tr><td colspan="4">DEPARTMENT OF THE NAVY NAVAL FACILITIES ENGINEERING COMMAND PANAMA CITY, FLORIDA</td></tr><tr><td colspan="4">NAVAL SUPPORT ACTIVITY</td></tr><tr><td colspan="4">PANAMA CITY JOINT OUTPATIENT CLINIC NAVAL GULF COAST HEALTH CARE</td></tr><tr><td colspan="4">REFLECTIVE CEILING PLAN</td></tr><tr><td>SIZE F</td><td>CODE IDENT. NO. 80091</td><td colspan="2">NAV FAC DRAWING NO. N/A</td></tr><tr><td>HQ/MC PROJ. NO. BE1206M</td><td>CONSTR. CONTR. NO. N69450-11-D-2529</td><td colspan="2"></td></tr><tr><td>SCALE AS NOTED</td><td>MACC.</td><td>T.O. #</td><td>SHEET OF</td></tr></table>		DEPARTMENT OF THE NAVY NAVAL FACILITIES ENGINEERING COMMAND PANAMA CITY, FLORIDA				NAVAL SUPPORT ACTIVITY				PANAMA CITY JOINT OUTPATIENT CLINIC NAVAL GULF COAST HEALTH CARE				REFLECTIVE CEILING PLAN				SIZE F	CODE IDENT. NO. 80091	NAV FAC DRAWING NO. N/A		HQ/MC PROJ. NO. BE1206M	CONSTR. CONTR. NO. N69450-11-D-2529			SCALE AS NOTED	MACC.	T.O. #	SHEET OF
NATURAL RESOURCES & ENVIRONMENTAL AFFAIRS																																																															
SATISFACTORY TO DATE																																																															
SAFETY DEPARTMENT																																																															
SATISFACTORY TO DATE																																																															
FIRE DEPARTMENT																																																															
SATISFACTORY TO DATE																																																															
PUBLIC WORKS SUPERVISOR																																																															
SATISFACTORY TO DATE																																																															
P.W. DWG. NO.																																																															
DRAWN BY RWC																																																															
CHECKED BY WWB																																																															
SUPERVISOR WWB																																																															
APPROVED	DATE																																																														
PUBLIC WORKS OFFICER																																																															
DEPARTMENT OF THE NAVY NAVAL FACILITIES ENGINEERING COMMAND PANAMA CITY, FLORIDA																																																															
NAVAL SUPPORT ACTIVITY																																																															
PANAMA CITY JOINT OUTPATIENT CLINIC NAVAL GULF COAST HEALTH CARE																																																															
REFLECTIVE CEILING PLAN																																																															
SIZE F	CODE IDENT. NO. 80091	NAV FAC DRAWING NO. N/A																																																													
HQ/MC PROJ. NO. BE1206M	CONSTR. CONTR. NO. N69450-11-D-2529																																																														
SCALE AS NOTED	MACC.	T.O. #	SHEET OF																																																												