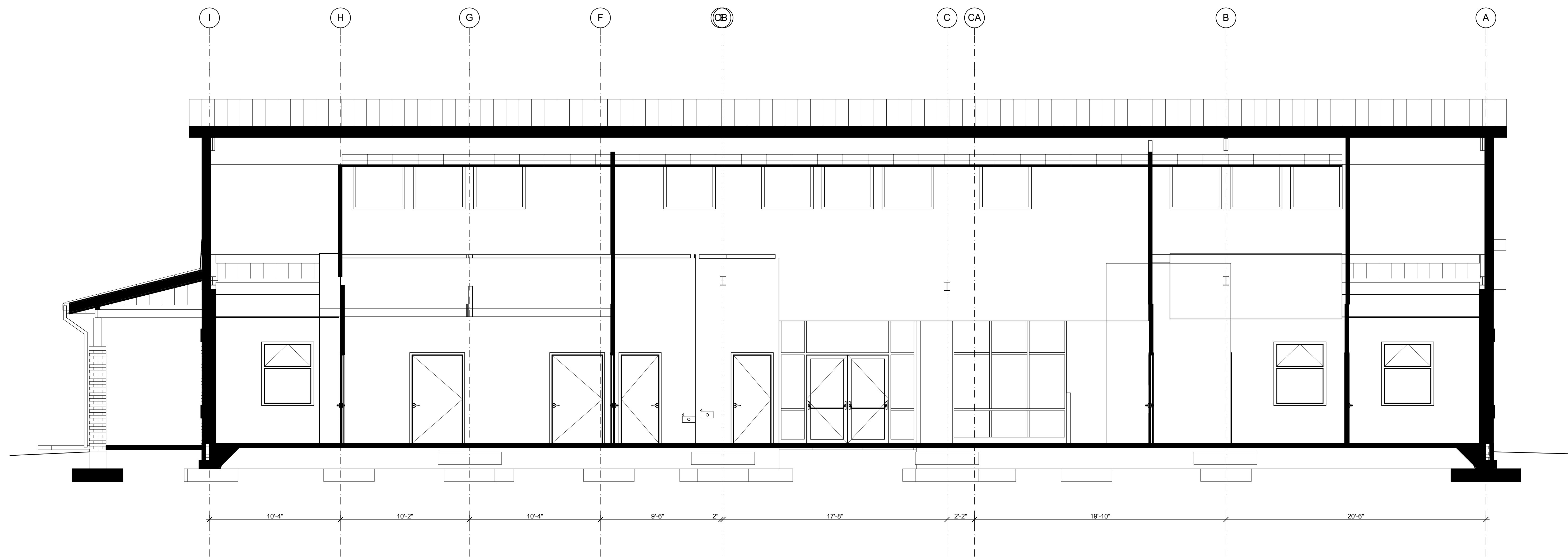


SECTION
1
A-302
SCALE: 1/4" = 1'-0"



SECTION
2
A-302
SCALE: 1/4" = 1'-0"

FINAL SUBMISSION
MARCH 2012

IF SHEET IS LESS THAN (30"x42") IT IS
A REDUCED PRINT; SCALE ACCORDINGLY

A302

 766 MIDDLE ST., FAIRHOPE, AL 36532 251-590-5778 ARCH. & ENGR. SEAL 	NATURAL RESOURCES & ENVIRONMENTAL AFFAIRS		P.W. DWG. NO.		DEPARTMENT OF THE NAVY NAVAL FACILITIES ENGINEERING COMMAND PANAMA CITY, FLORIDA				
	SATISFACTORY TO DATE		DRAWN BY RWC		NAVAL SUPPORT ACTIVITY				
	SAFETY DEPARTMENT		CHECKED BY WWB		PANAMA CITY JOINT OUTPATIENT CLINIC NAVAL GULF COAST HEALTH CARE				
	SATISFACTORY TO DATE		SUPERVISOR WWB		BUILDING SECTIONS				
FIRE DEPARTMENT		APPROVED		DATE		SIZE F	CODE IDENT. NO. 80091	NAV FAC DRAWING NO. N/A	
PUBLIC WORKS SUPERVISOR		PUBLIC WORKS OFFICER		DATE		HQ/MC PROJ. NO.	BE1206M	CONSTR. CONTR. NO.	N69450-11-D-2529
SATISFACTORY TO DATE		SCALE		AS NOTED		MACC.	T.O. #	SHEET	OF