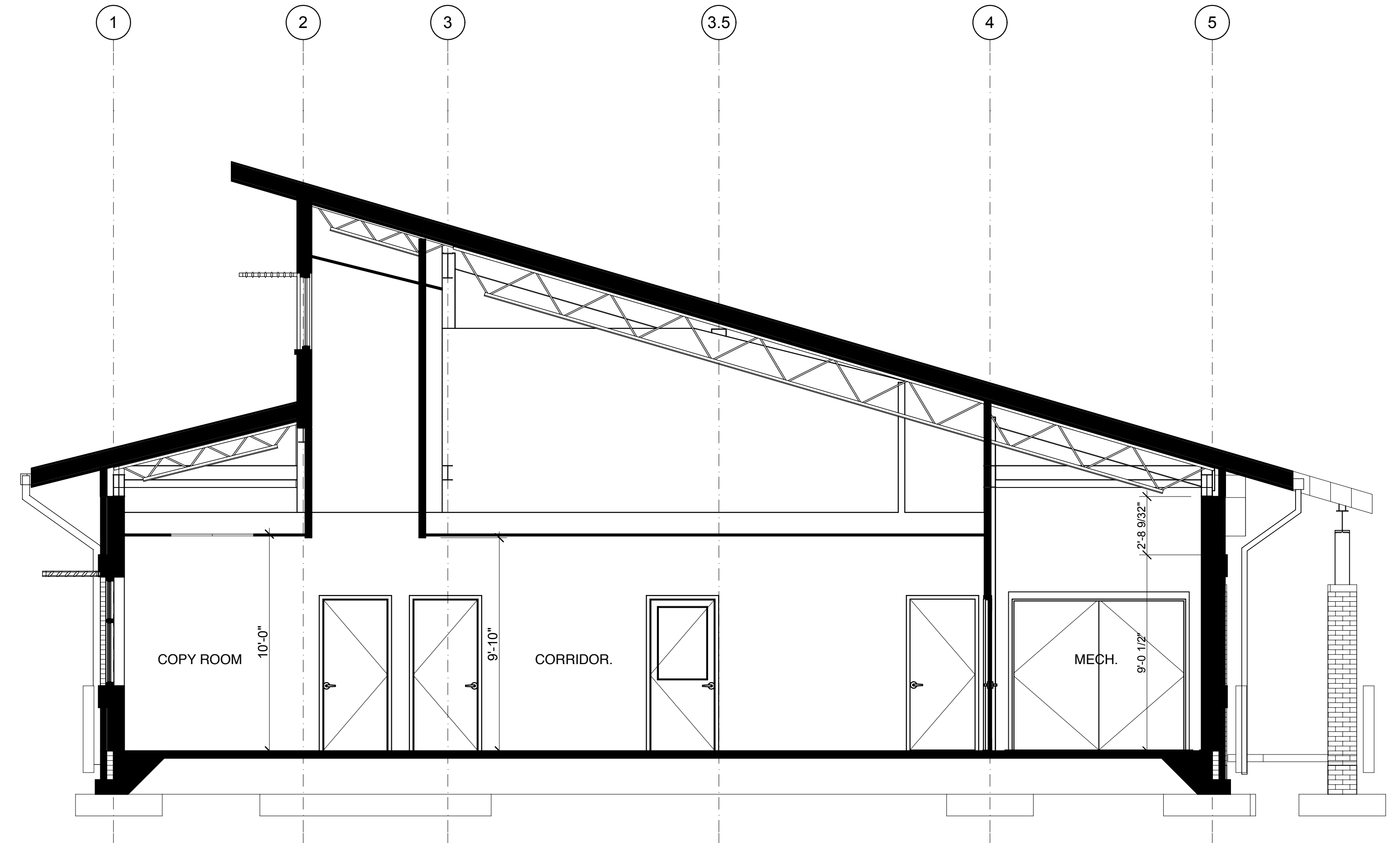
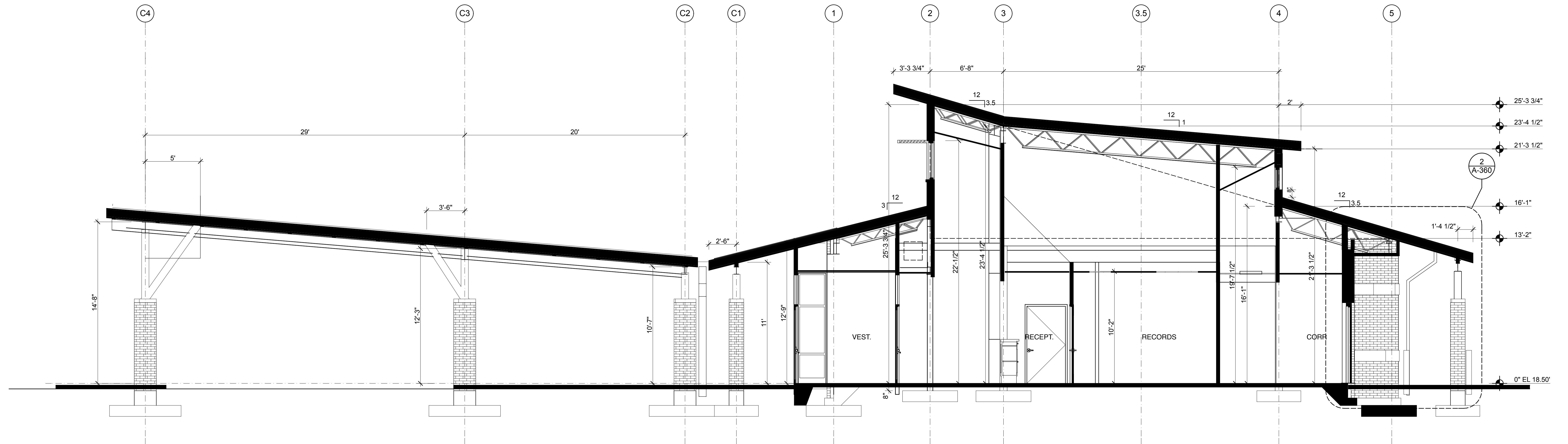


3 SECTION  
A-303 SCALE: 1/4" = 1'-0" 0 2' 4' 8'



2 SECTION  
A-303 SCALE: 1/4" = 1'-0" 0 2' 4' 8'



1 SECTION  
A-303 SCALE: 1/4" = 1'-0" 0 2' 4' 8'

FINAL SUBMISSION  
MARCH 2012

IF SHEET IS LESS THAN (30"x42") IT IS  
A REDUCED PRINT; SCALE ACCORDINGLY

A303

 766 MIDDLE ST. FAIRHOPE, AL 36532 251-590-5778 ARCH. & ENGR. SEAL 	NATURAL RESOURCES & ENVIRONMENTAL AFFAIRS		P.W. DWG. NO.	
	SATISFACTORY TO DATE		DRAWN BY	
	SAFETY DEPARTMENT		RW/C	
	SATISFACTORY TO DATE		CHECKED BY	
	FIRE DEPARTMENT		WWB	
SATISFACTORY TO DATE		SUPERVISOR		
PUBLIC WORKS SUPERVISOR		WWB		
SATISFACTORY TO DATE		APPROVED DATE		
		PUBLIC WORKS OFFICER		

DEPARTMENT OF THE NAVY NAVAL FACILITIES ENGINEERING COMMAND NAVAL SUPPORT ACTIVITY PANAMA CITY, FLORIDA			
PANAMA CITY JOINT OUTPATIENT CLINIC NAVAL GULF COAST HEALTH CARE BUILDING SECTIONS			
SIZE F	CODE IDENT. NO. 80091	NAV FAC DRAWING NO. N/A	
HQ/MC PROJ. NO. BE1206M	CONSTR. CONTR. NO. N69450-11-D-2529		
SCALE AS NOTED	MACC.	T.O. #	SHEET OF