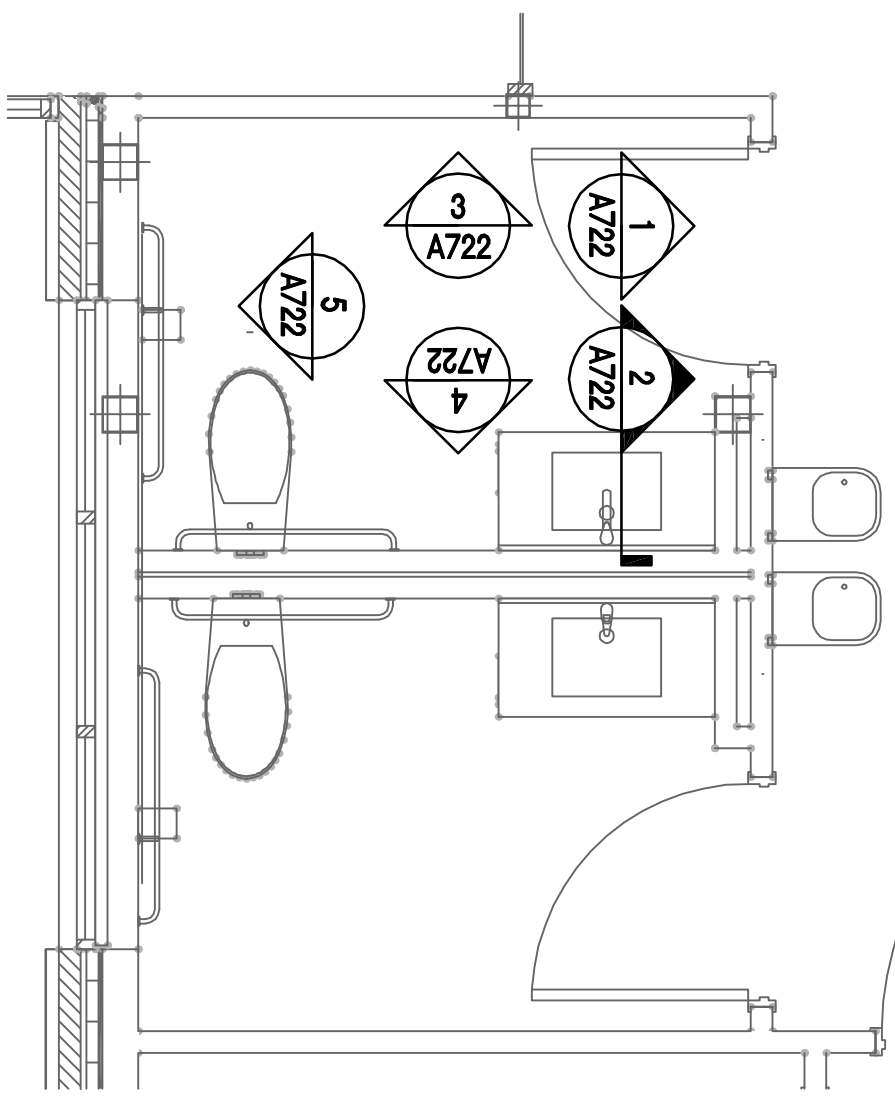
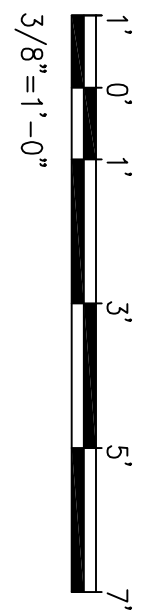
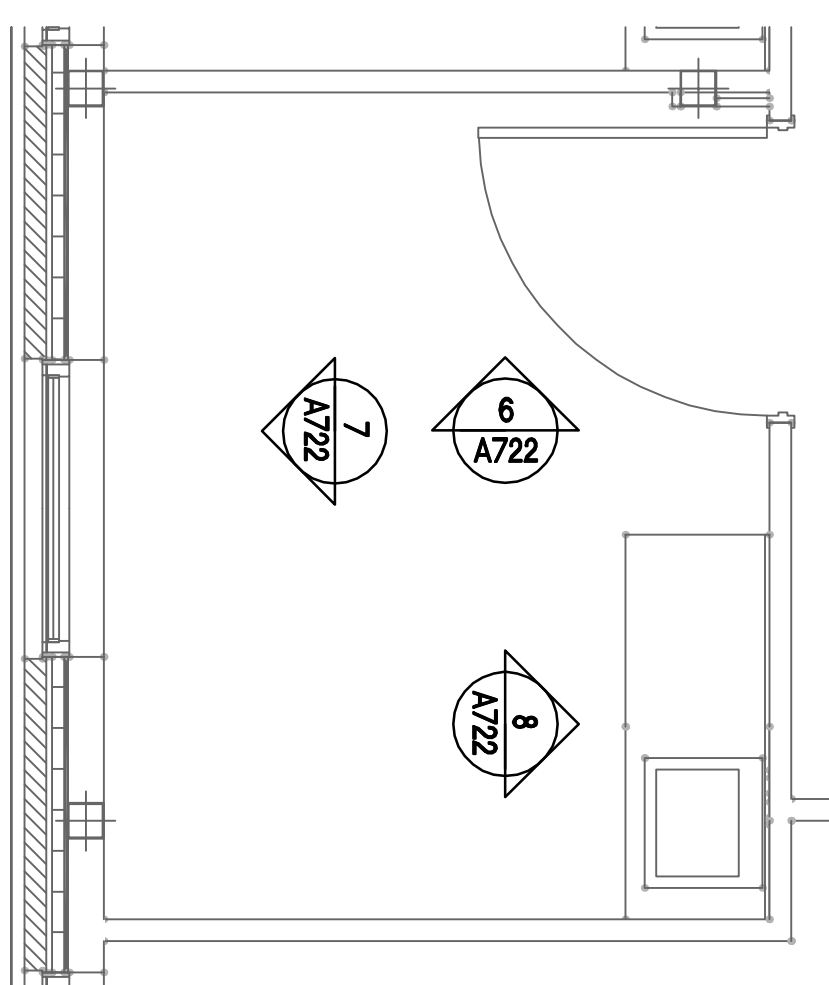
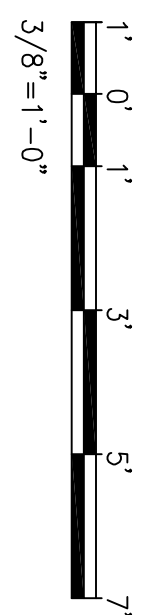


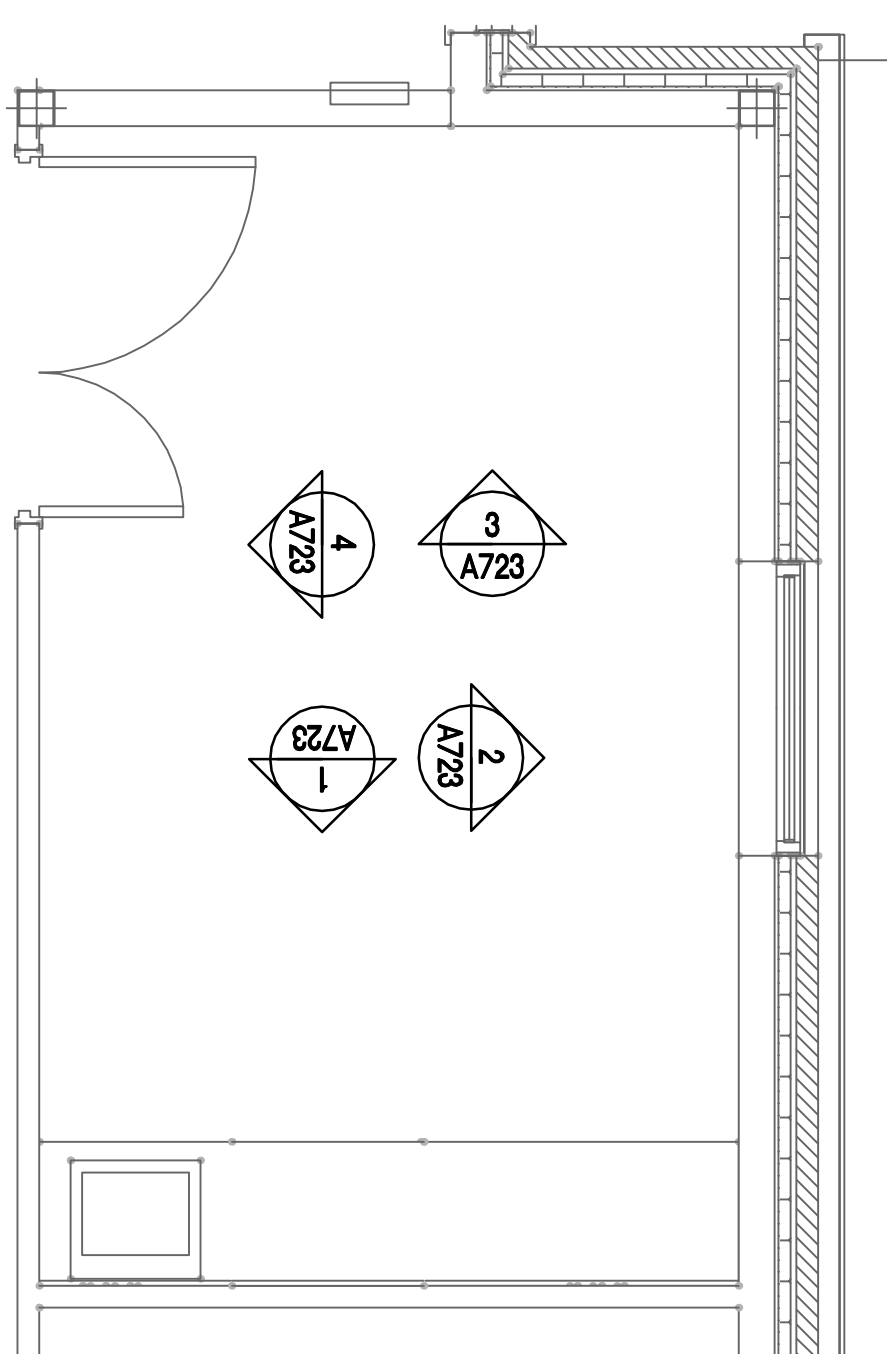
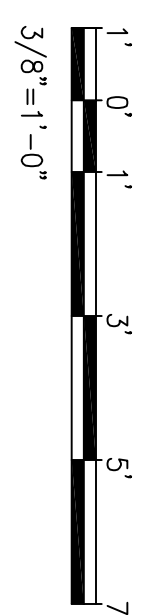
RECEPTION: ENLARGED PLAN



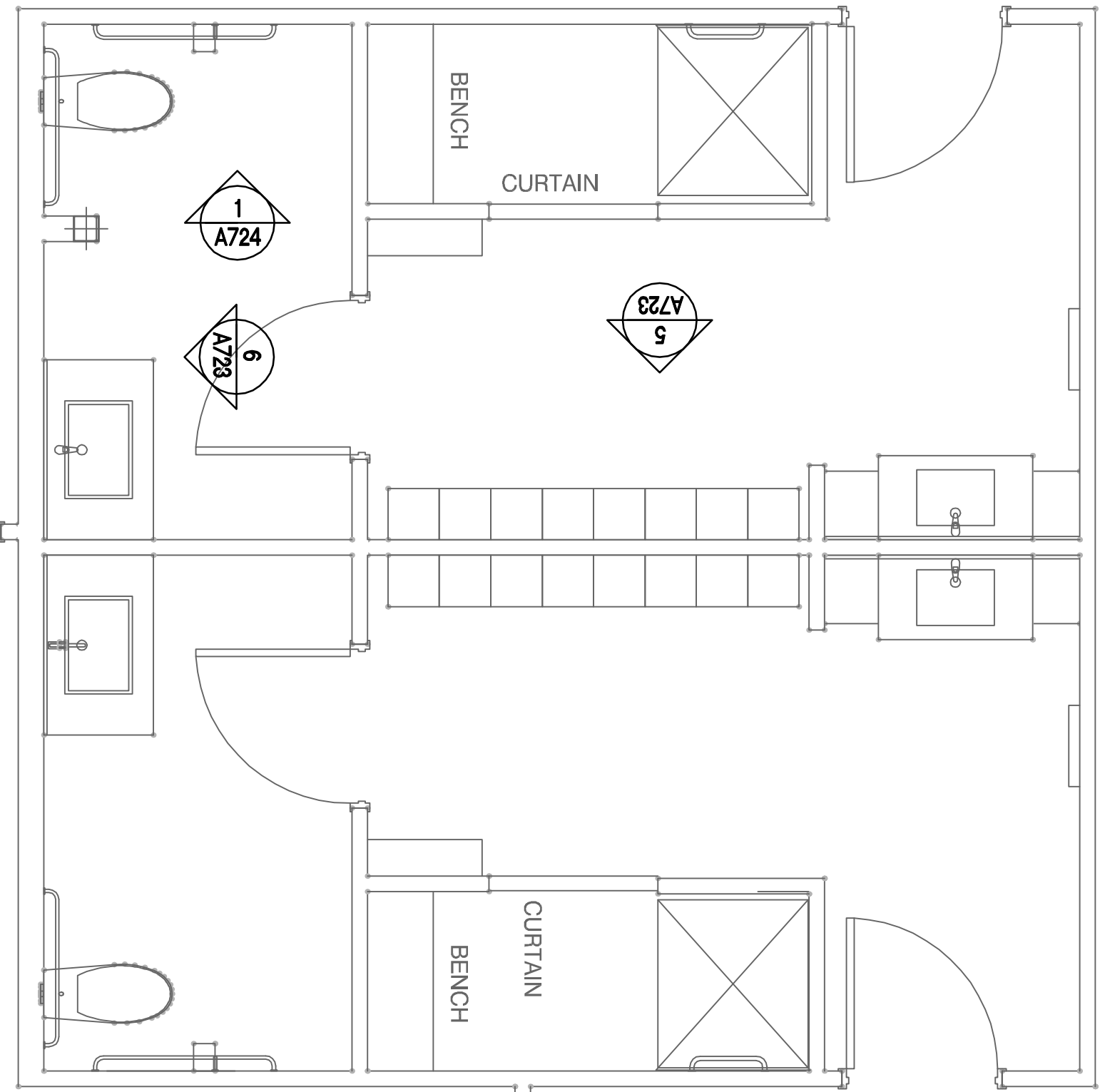
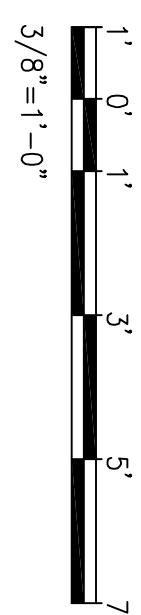
PUBLIC TOILET: ENLARGED PLAN



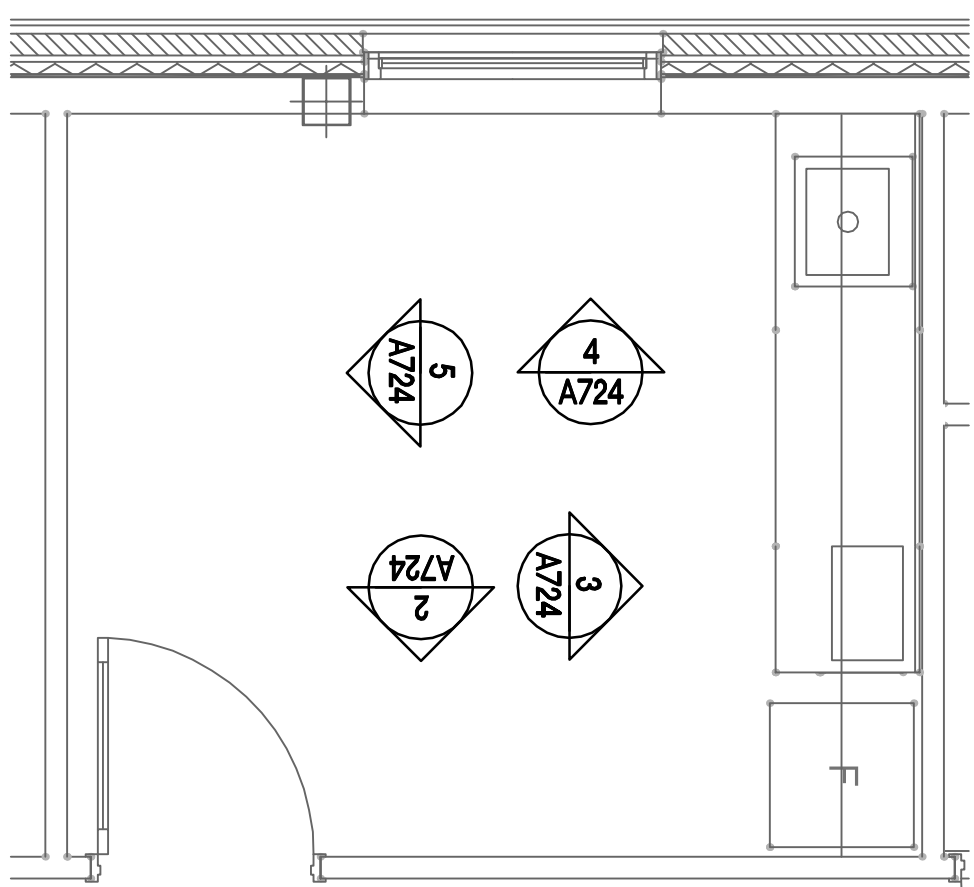
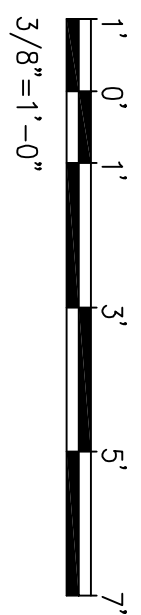
EXAM ROOM: ENLARGED PLAN



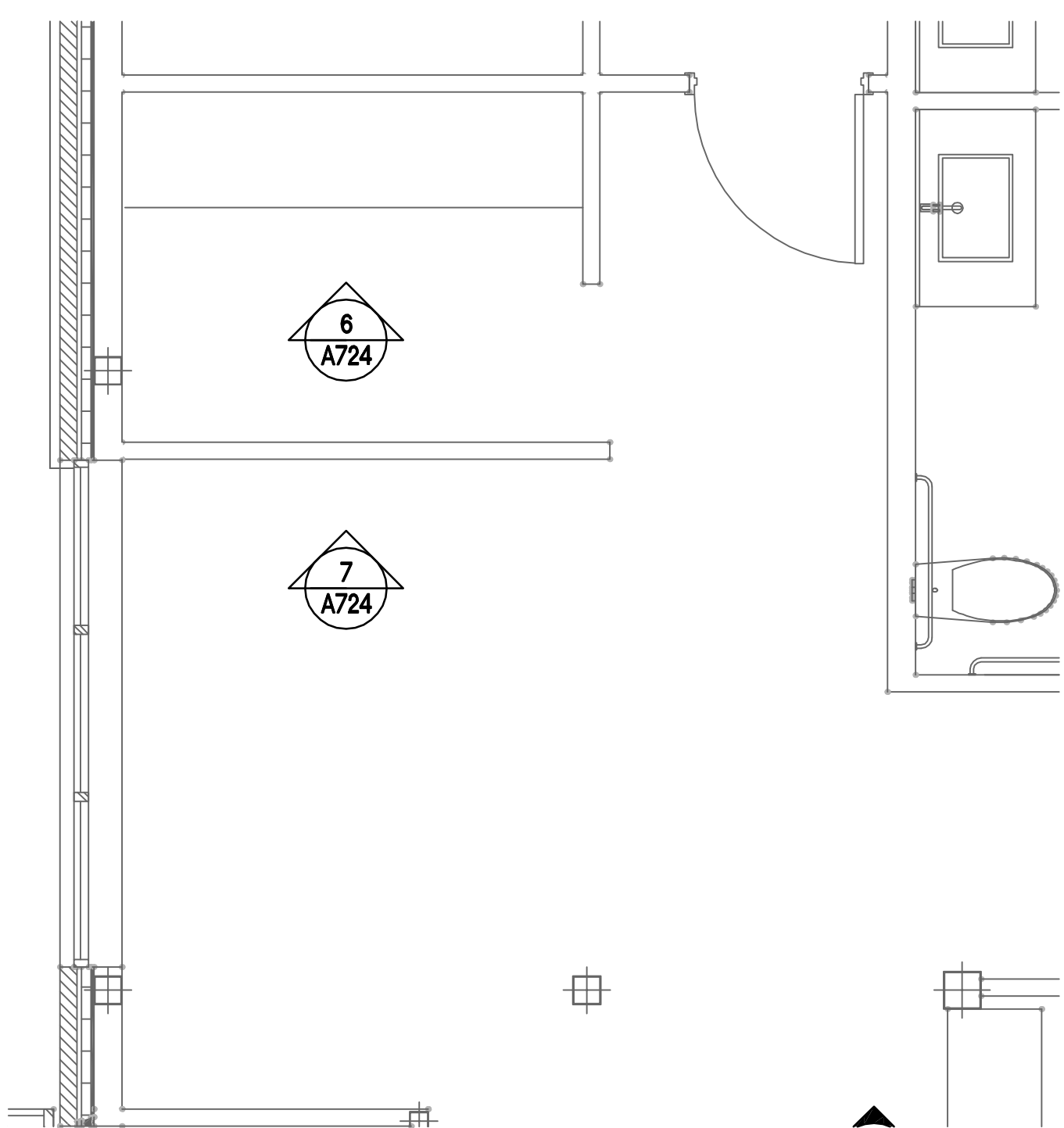
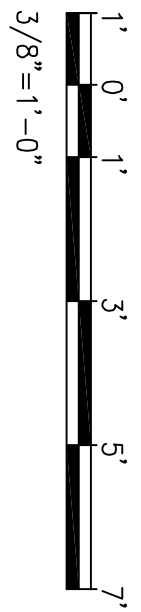
TREATMENT: ENLARGED PLAN



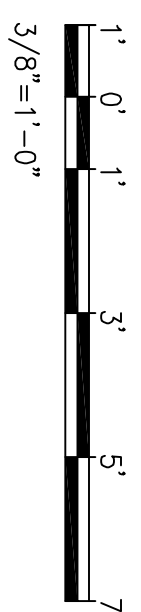
LOCKER ROOM + TOILET: ENLARGED PLAN



LOUNGE: ENLARGED PLAN



KIOSK/CHECK-IN + WAITING AREA: ENLARGED PLAN



FINAL SUBMISSION
MARCH 2012

IF SHEET IS LESS THAN (30"x42") IT IS
A REDUCED PRINT. SCALE ACCORDINGLY.

A402

BES DESIGN/BUILD		NATURAL RESOURCES & ENVIRONMENTAL AFFAIRS		P.W. DWG. NO.		DEPARTMENT OF THE NAVY NAVAL SUPPORT ACTIVITY PANAMA CITY, FLORIDA		NAVAL FACILITIES ENGINEERING COMMAND	
706 WINDLE ST., PANAMA CITY, FL 32402 261-980-5778		ARCH. & ENGR. SEAL		DESIGNED BY		DRAWN BY		PANAMA CITY JOINT OUTPATIENT CLINIC	
				CHECKED BY		CHECKED BY		NAVAL GULF COAST HEALTH CARE	
				SUPERVISOR		SUPERVISOR		ENLARGED PLANS	
				DATE		DATE			
				PUBLIC WORKS SUPERVISOR		PUBLIC WORKS OFFICER			
				SCALE		SCALE			
				T.O.#		SHEET		OF	