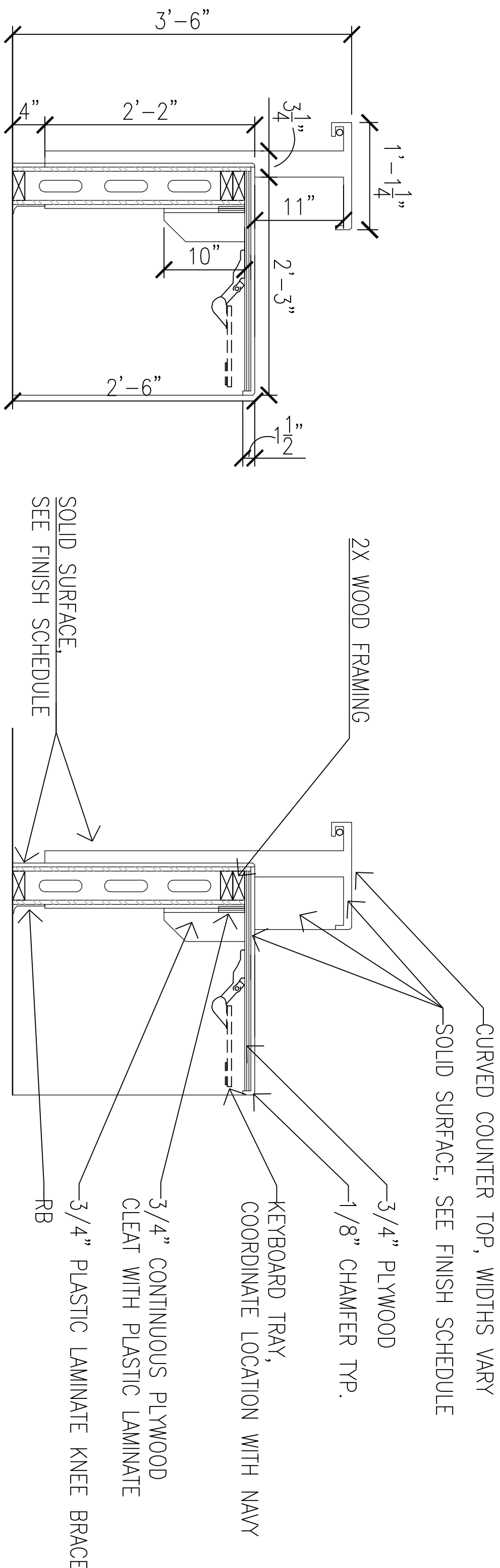
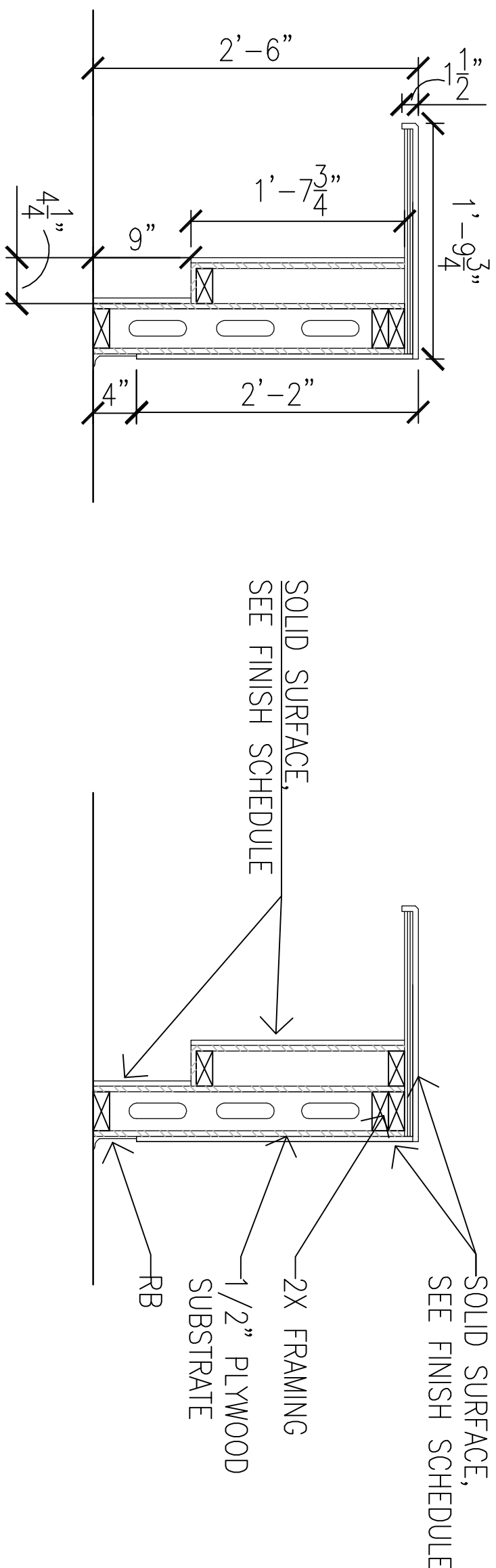


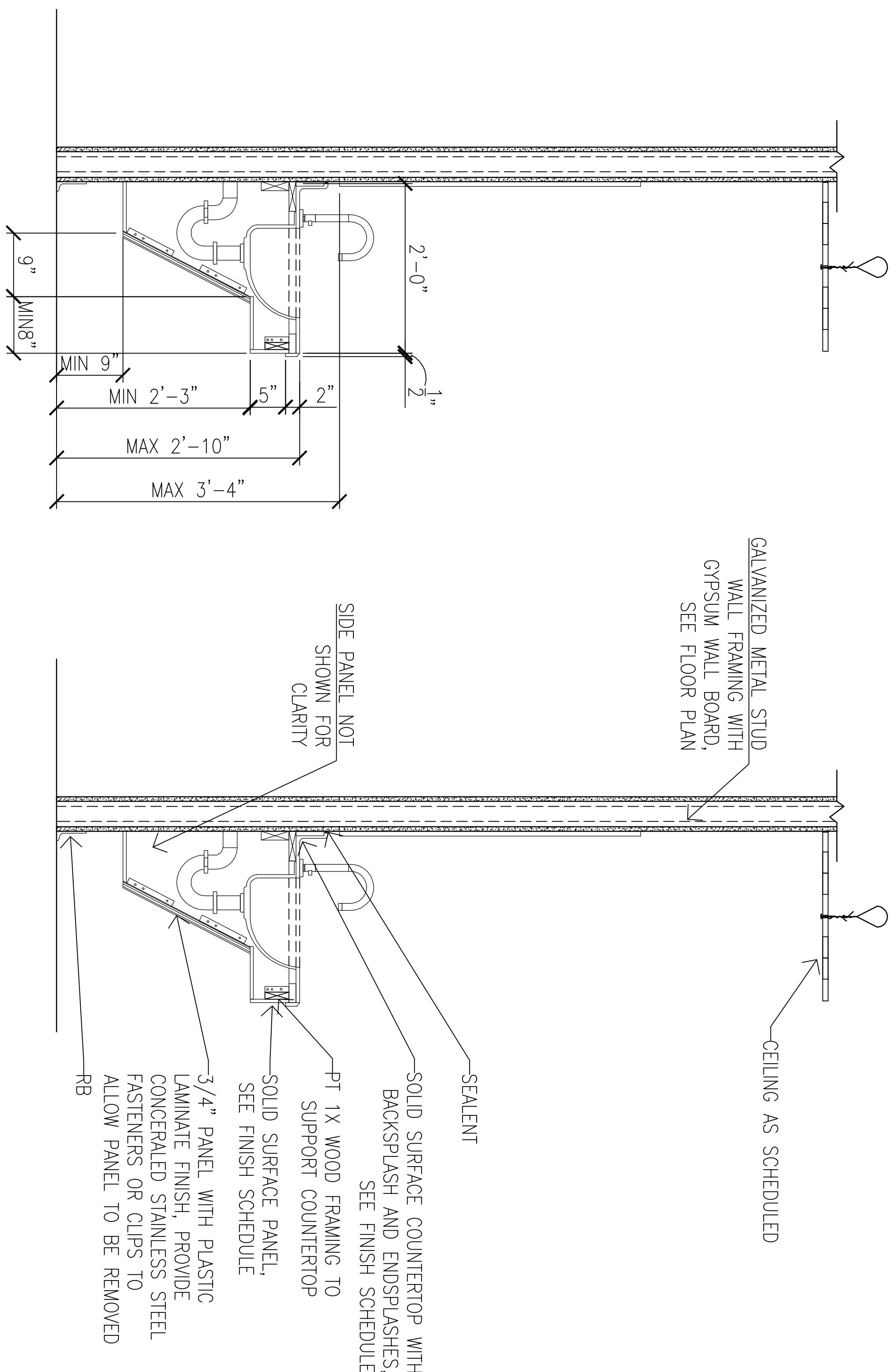
1 CASEWORK SECTION: RECEPTION-DOOR/DRAWER  
A752 1" = 1'-0"



2 CASEWORK SECTION: RECEPTION-OPEN BELOW  
A752 1" = 1'-0"



3 CASEWORK SECTION: RECEPTION-ADA TRANSACTION  
A752 1" = 1'-0"

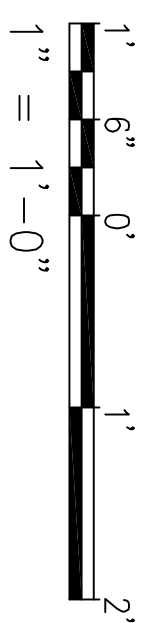


4 CASEWORK SECTION: LAVATORY  
A752 1" = 1'-0"

NOTE: DESIGNED IN ACCORDANCE WITH UFAS

#### CASEWORK NOTES

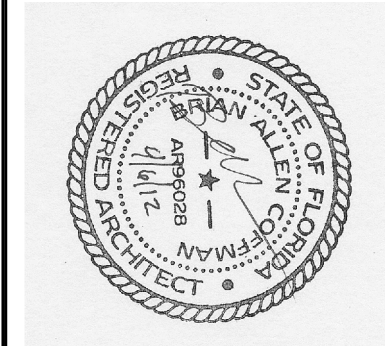
1. ALL COUNTER TOPS AND BACKSPLASHES ARE TO BE SOLID SURFACE WITH 1/8" CHAMFER AT EXPOSED EDGES, SEE FINISH SCHEDULE FOR COLOR.
2. ALL CABINET BODIES, DOORS AND DRAWERS TO BE PLASTIC LAMINATE PANELS, SEE FINISH SCHEDULE FOR COLOR.
3. ALL ADJUSTABLE SHELVES TO PLASTIC LAMINATE ON ADJUSTABLE SHELF STANDARDS.
4. ALL CABINET PULLS TO BE 3" RECESSED PULLS, UNO.
5. PROVIDE BLOCKING IN WALL FOR ATTACHMENT OF CABINETS.



FINAL SUBMISSION  
APRIL 6, 2012

IF SHEET IS LESS THAN (30"x42") IT IS  
A REDUCED PRINT, SCALE ACCORDINGLY

A752



<b>BES</b> DESIGN/BUILD INC. 261-990-0778 ARCH. & ENGR. SEAL FLORIDA BES DESIGN/BUILD, INC. NO. 3978 CERTIFICATE OF AUTHORITY		<b>NATURAL RESOURCES &amp; ENVIRONMENTAL AFFAIRS</b> P.W. DWG. NO.		<b>DEPARTMENT OF THE NAVY</b> NAVAL FACILITIES ENGINEERING COMMAND PANAMA CITY, FLORIDA	
<b>SUPERVISOR</b> TO DATE SAFETY DEPARTMENT		<b>DRAWN BY</b> AAC		<b>PANAMA CITY JOINT OUTPATIENT CLINIC</b> NAVAL GULF COAST HEALTH CARE	
<b>SUPERVISOR</b> TO DATE FIRE DEPARTMENT		<b>CHECKED BY</b> RWC		<b>CASEWORK SECTIONS</b>	
<b>SUPERVISOR</b> TO DATE PUBLIC WORKS SUPERVISOR		<b>APPROVED</b> DATE		<b>SIZE</b> 1/4" = 1'-0" SCALE	
<b>PUBLIC WORKS OFFICER</b>		<b>DATE</b>		<b>CONSTR. CONTR. NO.</b> N/A	
<b>SCALE</b>		<b>MACC.</b>		<b>SHEET 32 OF 32</b>	