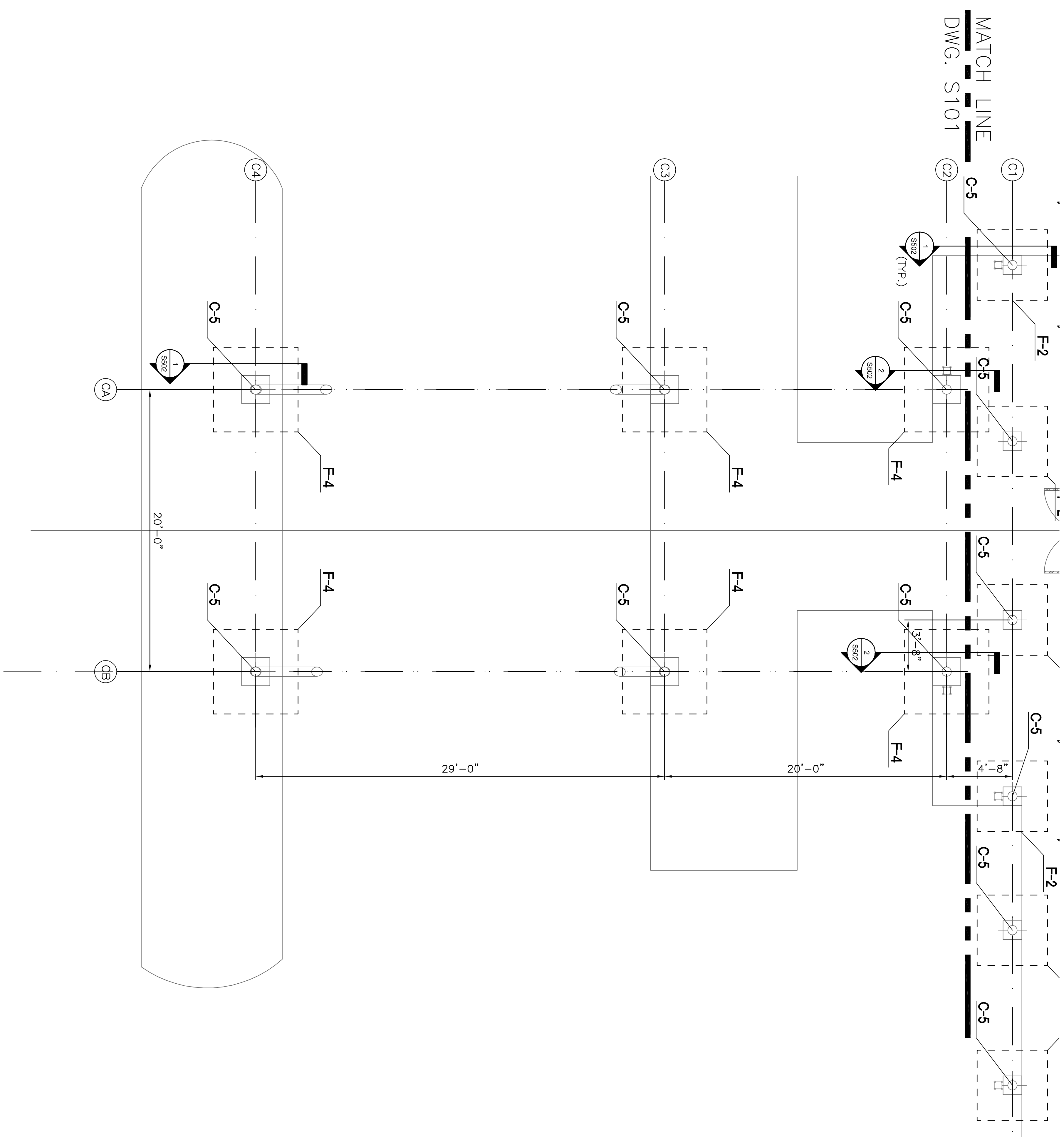


SLAB-ON-GRADE AND FOUNDATION PLAN NOTES:

1. TYPICAL SLAB-ON-GRADE SHALL CONSIST OF 4" THICK NORMAL WEIGHT CONCRETE REINFORCED WITH 6"x8" #2 3WAY-9 WELDED WIRE FABRIC (WWF) AND PLACED OVER A 10 MIL. VAPOR BARRIER AND PREPARED SOIL PER GEOTECHNICAL REPORT.
2. REFER TO PLAN & TYPICAL SLAB DETAILS FOR THICKENED SLABS, REFER TO ARCHITECTURAL AND MECHANICAL DRAWINGS FOR SLOPED, DEPRESSIONS, ETC.
3. TYPICAL SLAB-ON-GRADE ELEVATION SHALL BE 18.50' (DATA 0 0' 0").
4. TYPICAL FINISH ELEVATION SHALL BE 18.50' \pm X". REFER TO FOOTING SCHEDULE FOR SIZE AND REINFORCING.
5. MEASURED FROM DATUM.
6. STEEL COLUMNS ARE INDICATED ON PLAN THUS C-X. REFER TO COLUMN SCHEDULE FOR SIZE AND BASE.
7. CONTROL JOINTS ARE INDICATED ON PLAN THUS C-J.



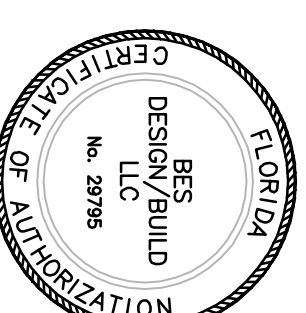
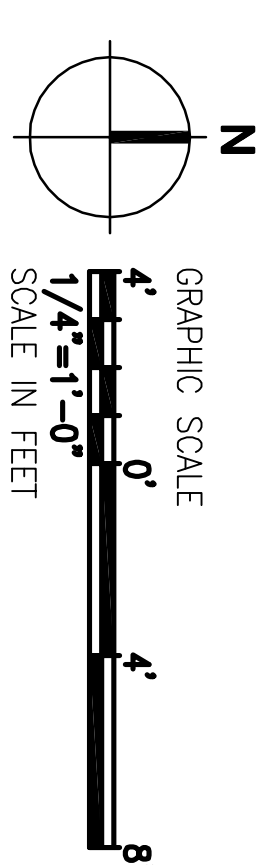
A	CANOPY FOUNDATION PLAN
S102	

1/4" = 1'-0"

FINAL SUBMISSION
APRIL 6, 2012

IF SHEET IS LESS THAN (30"x42") IT IS A REDUCED PRINT; SCALE ACCORDINGLY

\$102

[illegible]