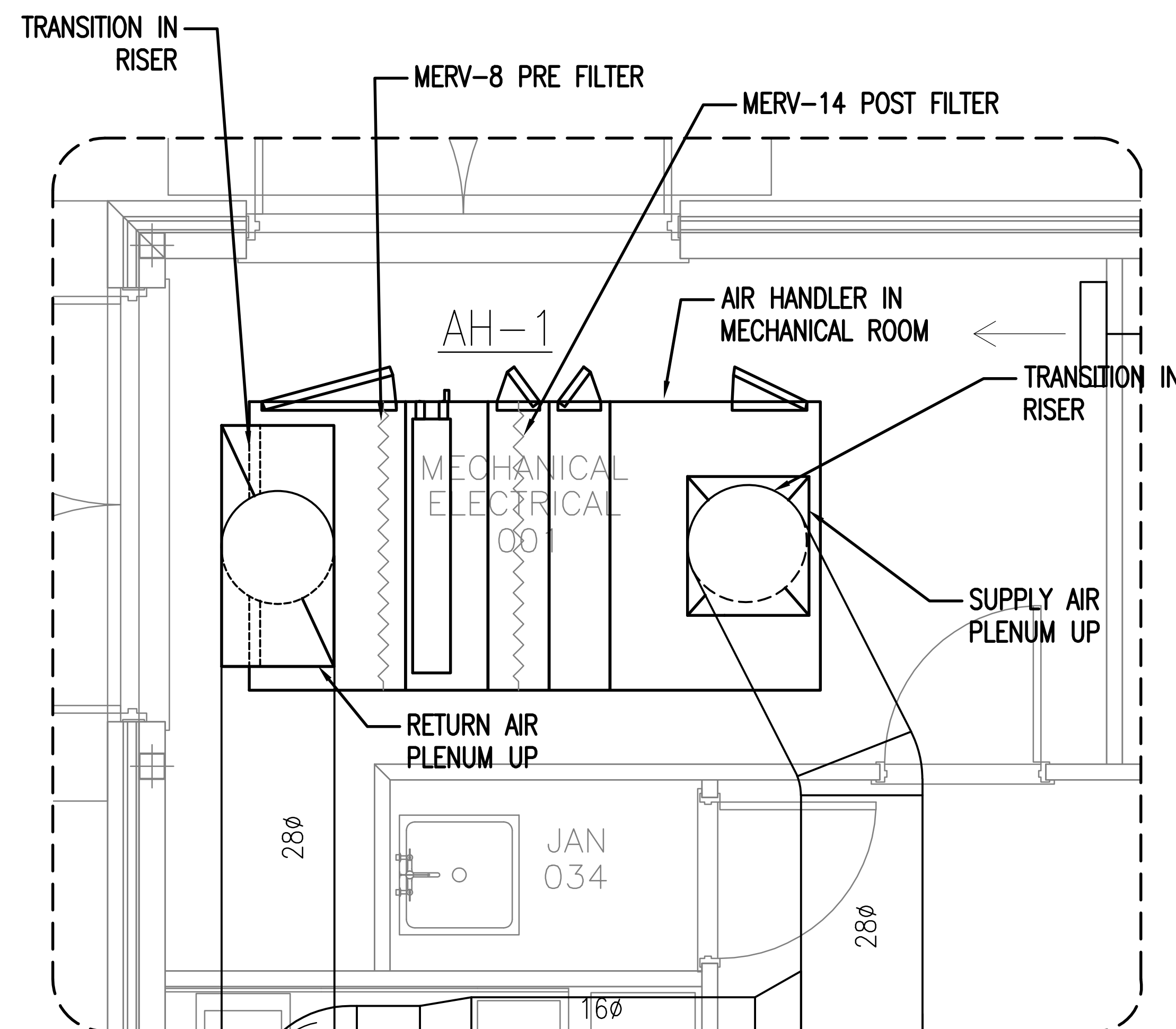
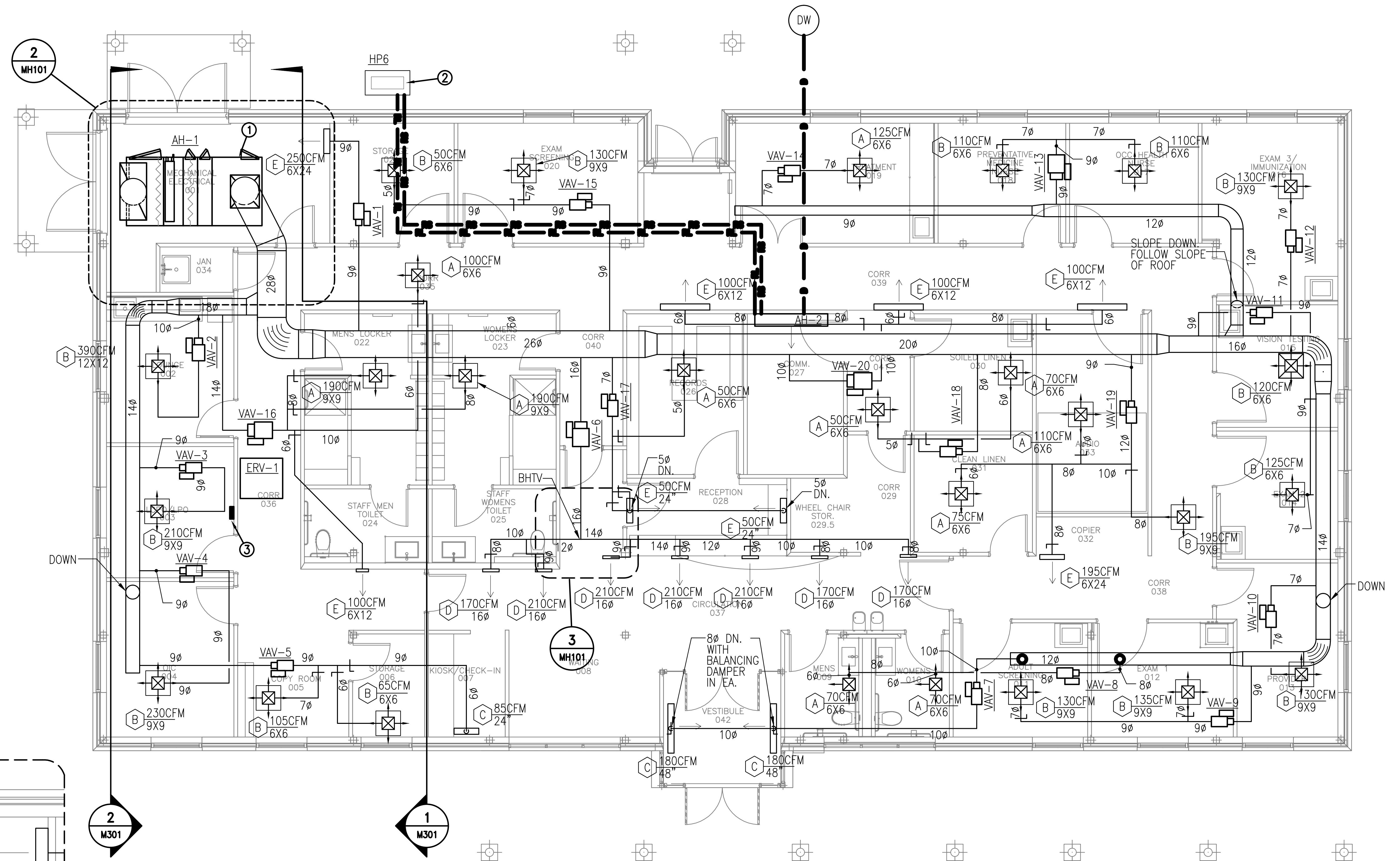


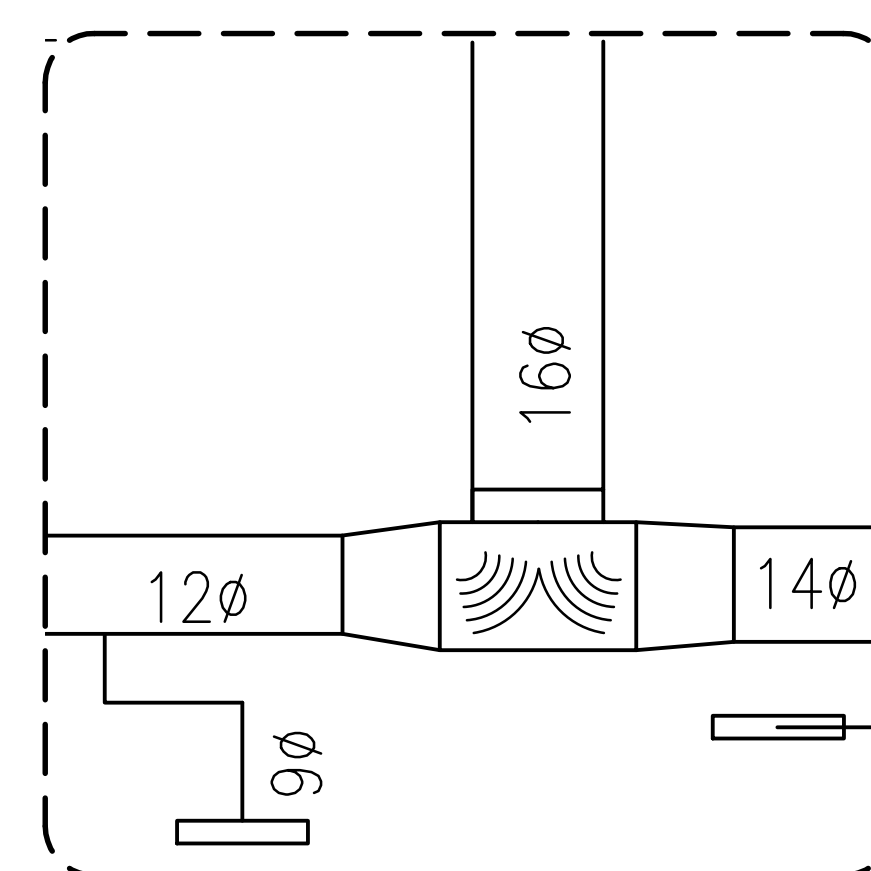
NEW WORK NOTE SCHEDULE

- 1 PROVIDE AIR HANDLER ON 4" THICK REINFORCED CONCRETE MAINTENANCE PAD. PAD TO EXTEND A MINIMUM OF 6" BEYOND UNIT FOOTPRINT. SEE SCHEDULE SHEET FOR ADDITIONAL INFORMATION.
- 2 PROVIDE OUTDOOR HEAT PUMP UNIT ON 6" THICK REINFORCED CONCRETE PAD. PAD TO EXTEND A MINIMUM OF 6" BEYOND UNIT FOOTPRINT. SEE SCHEDULE SHEET FOR ADDITIONAL INFORMATION.
- 3 PROVIDE HVAC EMERGENCY SHUTOFF SWITCH. SEE SHEET M504 FOR ADDITIONAL INFORMATION.



MECHANICAL PLAN - NEW WORK - ENLARGED MECHANICAL ROOM DUCT LAYOUT

2
MH101
SCALE: 1/4" = 1'-0"



3 DETAIL OF BULL HEAD TEE

MH101
SCALE: 1/4" = 1'-0"

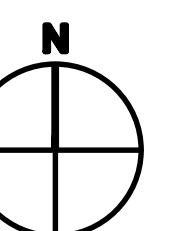
1 MECHANICAL PLAN - SUPPLY

MH101
SCALE: 1/4" = 1'-0"

NOTE:

BASE BID DESIGN:
MECHANICAL COOLING TOWER AND BOILER SYSTEM WITH WATER TO WATER HEAT PUMPS, ASSOCIATED PUMPS, PIPING AND CONTROLS.

ALTERNATE BID DESIGN:
GEOTHERMAL SYSTEM WITH WATER TO WATER HEAT PUMPS, ASSOCIATED PUMPS, PIPING AND CONTROLS.



FINAL SUBMISSION
APRIL 18, 2012

BES DESIGN/BUILD 766 MIDDLE ST., PANAMA CITY, FL 32532 251-990-5778 ARCH. & ENGR. SEAL FLORIDA BES DESIGN/BUILD LLC No. 29795 STATE OF FLORIDA PROFESSIONAL ENGINEER		NATURAL RESOURCES & ENVIRONMENTAL AFFAIRS SAFETY DEPARTMENT FIRE DEPARTMENT PUBLIC WORKS SUPERVISOR		P.W. DWG. NO. DRAWN BY: R. LONDOÑO CHECKED BY: R. DeLOACH SUPERVISOR: B. COFFMAN APPROVED: _____ DATE: _____ PUBLIC WORKS OFFICER		DEPARTMENT OF THE NAVY NAVAL FACILITIES ENGINEERING COMMAND PANAMA CITY, FLORIDA PANAMA CITY JOINT OUTPATIENT CLINIC NAVAL GULF COAST HEALTH CARE MECHANICAL PLAN SUPPLY	
IF SHEET IS LESS THAN (30"x42") IT IS A REDUCED PRINT; SCALE ACCORDINGLY		MH101		SIZE: F CODE IDENT. NO.: N/A PROJ. NO.: _____ SCALE: _____		CONSTR. CONTR. NO.: _____ T.O.# _____ SHEET 4 OF 12	