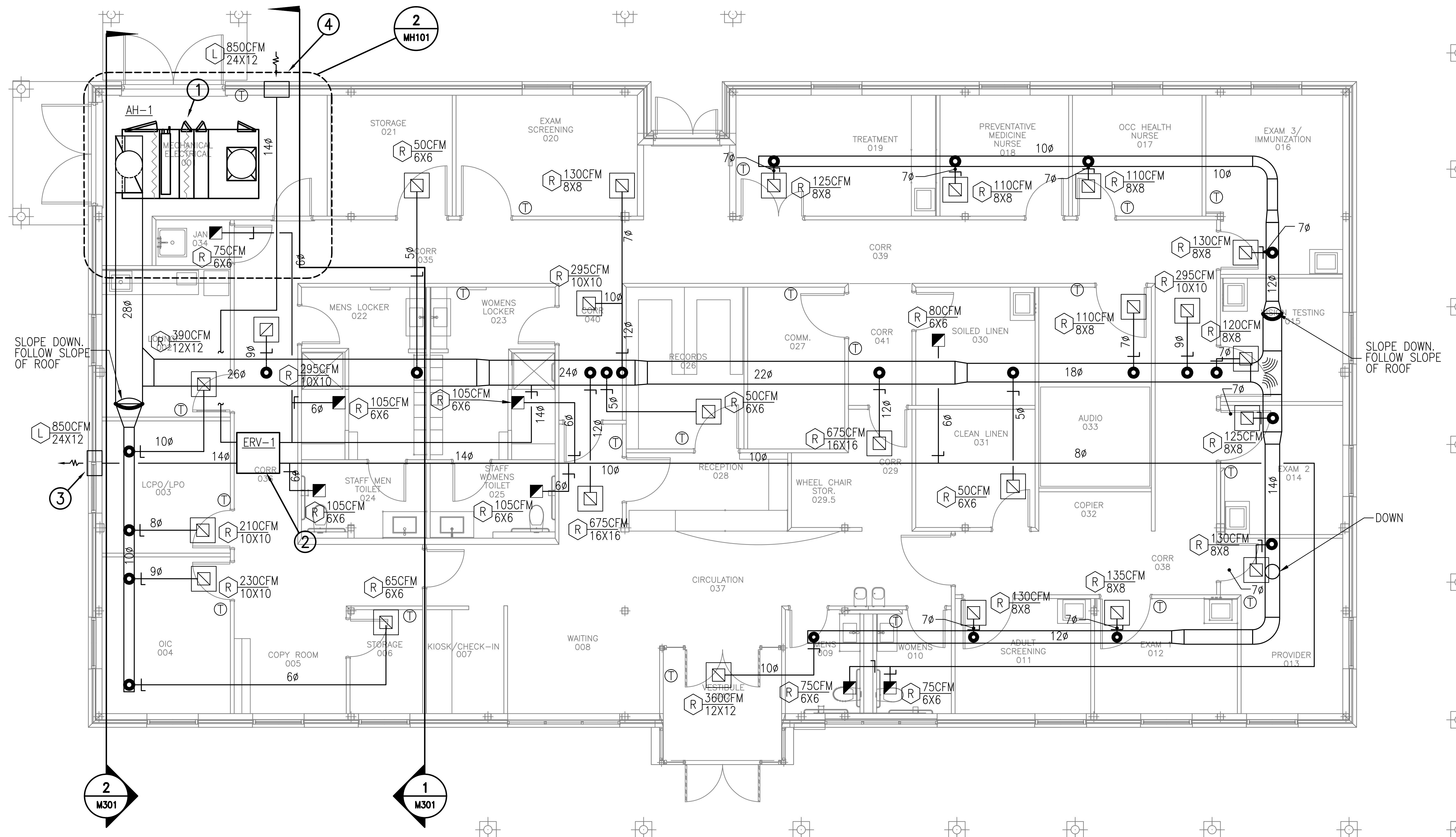


NEW WORK NOTE SCHEDULE

- AIR HANDLER UNIT ON 4" THICK REINFORCED CONCRETE MAINTENANCE PAD. PAD TO EXTEND A MINIMUM OF 6" BEYOND UNIT FOOTPRINT. SEE SCHEDULE SHEET FOR ADDITIONAL INFORMATION.
- ENERGY RECOVERY VENTILATOR (ERV) LOCATED ABOVE CEILING. SEE SCHEDULE SHEET FOR ADDITIONAL INFORMATION.
- WALL EXHAUST AIR LOUVER. SEE SCHEDULE SHEET FOR ADDITIONAL INFORMATION.
- WALL FRESH AIR LOUVER. INTAKE LOUVER SHALL BE 10'-0" MINIMUM ABOVE FINISHED GRADE. PROVIDE 1" FILTER AND LOW LEAKAGE DAMPERS THAT AUTOMATICALLY CLOSE WHEN EMERGENCY AIR DISTRIBUTION SWITCH IS ACTIVATED. SEE SCHEDULE SHEET FOR ADDITIONAL INFORMATION.



NOTE:

BASE BID DESIGN:
MECHANICAL COOLING TOWER AND BOILER SYSTEM WITH WATER TO WATER HEAT PUMPS, ASSOCIATED PUMPS, PIPING AND CONTROLS.

ALTERNATE BID DESIGN:
GEOTHERMAL SYSTEM WITH WATER TO WATER HEAT PUMPS, ASSOCIATED PUMPS, PIPING AND CONTROLS.

1 MECHANICAL PLAN - RETURN & EXHAUST

SCALE: 1/4" = 1'-0"

FINAL SUBMISSION
APRIL 18, 2012

IF SHEET IS LESS THAN (30"x42") IT IS
A REDUCED PRINT; SCALE ACCORDINGLY

MH102

BES DESIGN/BUILD 766 MIDDLE ST., PANAMA, FL 32401 251-990-5778 ARCH. & ENGR. SEAL		NATURAL RESOURCES & ENVIRONMENTAL AFFAIRS SAFETY DEPARTMENT FIRE DEPARTMENT PUBLIC WORKS SUPERVISOR		P.W. DWG. NO. DRAWN BY CHECKED BY SUPERVISOR APPROVED DATE PUBLIC WORKS OFFICER		DEPARTMENT OF THE NAVY NAVAL FACILITIES ENGINEERING COMMAND PANAMA CITY, FLORIDA PANAMA CITY JOINT OUTPATIENT CLINIC NAVAL GULF COAST HEALTH CARE MECHANICAL PLAN RETURN & EXHAUST	
STATE OF FLORIDA PROFESSIONAL ENGINEER NO. 29795		STATE OF FLORIDA PROFESSIONAL ENGINEER NO. 29795		SIZE F CODE IDENT. NO. N/A		NAYFA C DRAWING NO. N/A	
HONC PROJ. NO. SCALE		CONSTR. CONTR. NO. MACC.		T.O.#		SHEET 5 OF 12	