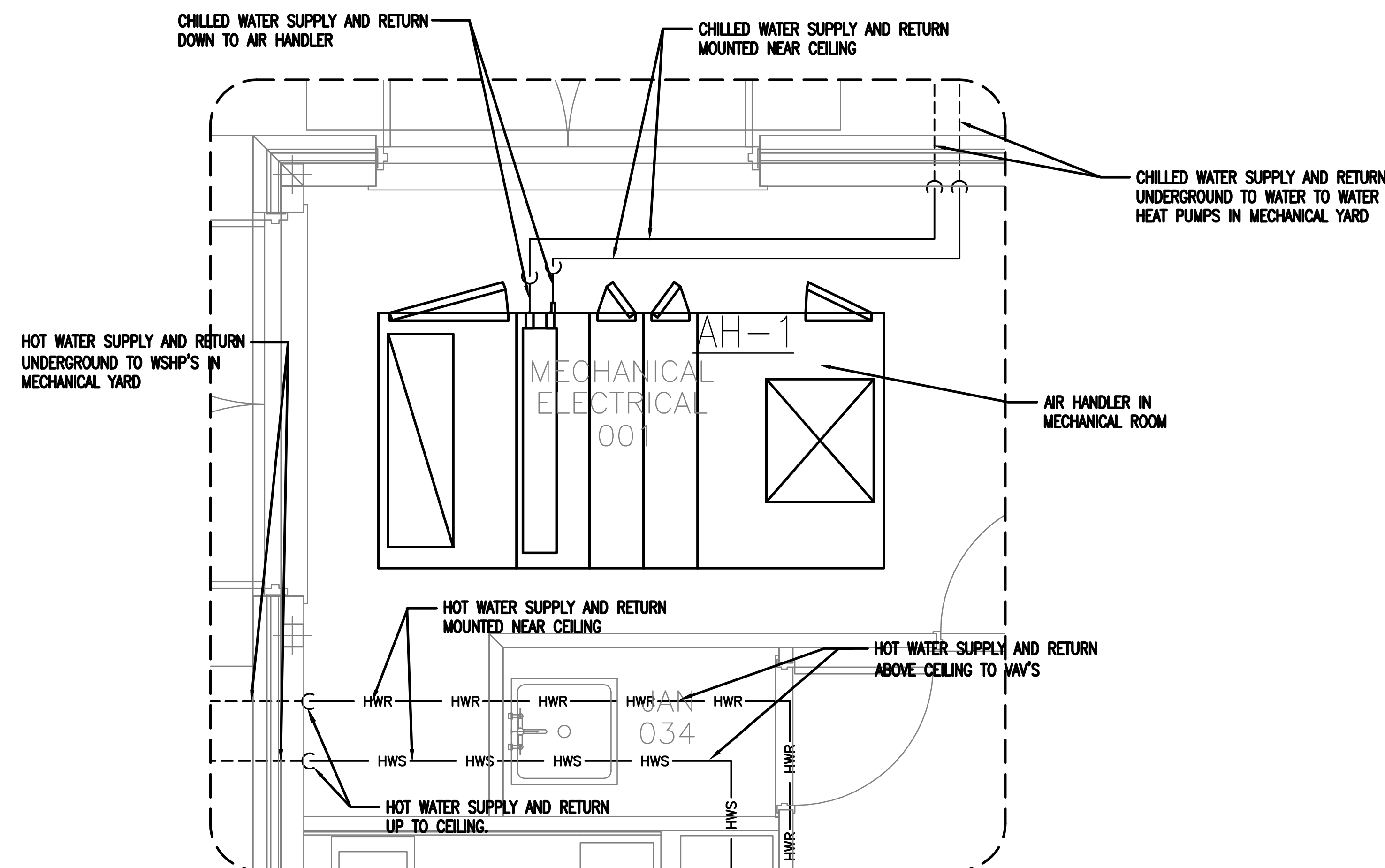
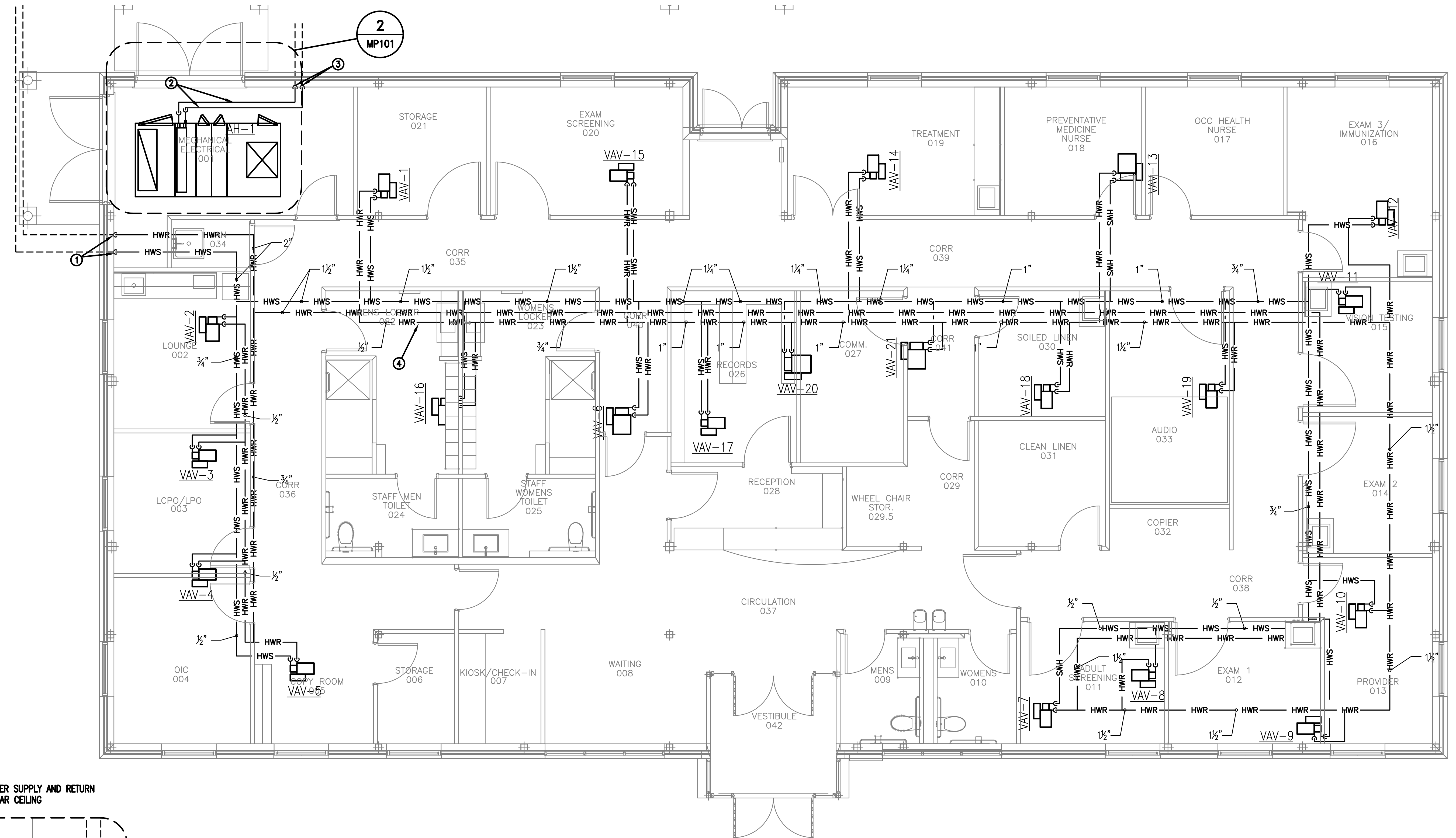


NEW WORK NOTE SCHEDULE

- ① HOT WATER PIPING FROM WSHIP'S UP TO CEILING. SEE ENLARGED MECHANICAL ROOM PLAN FOR DETAILS.
- ② CHILLED WATER PIPING FROM WATER TO WATER HEAT PUMPS TO AIR HANDLER. RUN ALL PIPING ABOVE, NEAR CEILING. SEE ENLARGED MECHANICAL ROOM PLAN FOR DETAILS.
- ③ CHILLED WATER PIPING FROM WSHIP'S UP TO CEILING. SEE ENLARGED MECHANICAL ROOM PLAN FOR DETAILS.
- ④ HOT WATER RETURN RUNS IN REVERSE RETURN CONFIGURATION.



MECHANICAL PLAN - NEW WORK - ENLARGED MECHANICAL ROOM HYDRONIC PIPING

2
MP101

SCALE: 1/4" = 1'-0"

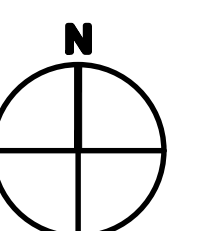
1 MECHANICAL PLAN - NEW WORK - HYDRONIC PIPING

MP101 SCALE: 1/4" = 1'-0"

NOTE:

BASE BID DESIGN:
MECHANICAL COOLING TOWER AND BOILER SYSTEM WITH WATER TO WATER HEAT PUMPS, ASSOCIATED PUMPS, PIPING AND CONTROLS.

ALTERNATE BID DESIGN:
GEOTHERMAL SYSTEM WITH WATER TO WATER HEAT PUMPS, ASSOCIATED PUMPS, PIPING AND CONTROLS.



FINAL SUBMISSION
APRIL 18, 2012

IF SHEET IS LESS THAN (30"x42") IT IS
A REDUCED PRINT; SCALE ACCORDINGLY

MP101

BES DESIGN/BUILD 766 MIDDLE ST., PANAMA, FL 32302 251-990-5778 ARCH. & ENGR. SEAL		P.W. DWG. NO. DRAWN BY R. LONDOÑO CHECKED BY R. DeLOACH SUPERVISOR B. COFFMAN APPROVED DATE PUBLIC WORKS OFFICER		DEPARTMENT OF THE NAVY NAVAL SUPPORT ACTIVITY PANAMA CITY, FLORIDA PANAMA CITY JOINT OUTPATIENT CLINIC NAVAL GULF COAST HEALTH CARE MECHANICAL PLAN HYDRONICS SIZE F CODE IDENT. NO. N/A HONC PROJ. NO. CONSTR. CONTR. NO. SCALE MACC. T.O.# SHEET 6 OF 12	
NATURAL RESOURCES & ENVIRONMENTAL AFFAIRS SATISFACTORY TO DATE		SAFETY DEPARTMENT SATISFACTORY TO DATE		FIRE DEPARTMENT SATISFACTORY TO DATE	
PUBLIC WORKS SUPERVISOR SATISFACTORY TO DATE					

