

REMO1

- ① COORDINATE WITH MECHANICAL CONTRACTOR AND RECONNECT LINE VOLTAGE POWER TO DAMPERS AND CONTROLS.
- ② RELOCATE LIGHT SWITCHING TO NEW DOOR. PROVIDE NEW SWITCH AND COVER PLATE.
- ③ NOT USED.

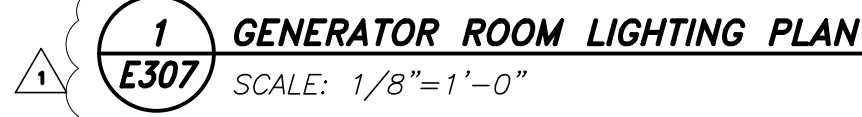
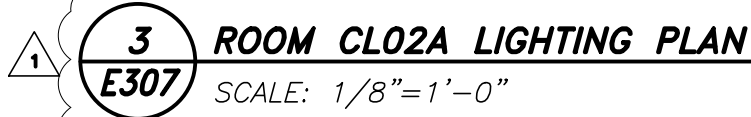
1 COORDINATE WITH MECHANICAL CONTRACTOR AND DISCONNECT LINE VOLTAGE POWER FROM DAMPERS AND CONTROLS TO BE REMOVED.

2 NOT USED.

4. COORDINATE WITH MECHANICAL CONTRACTOR AND DISCONNECT POWER TO DAYTANK UNITS. DISCONNECT ALARMS TO GENERATOR CONTROLLERS. DISCONNECT DDC FROM GENERATOR AND DAYTANKS.

5 DISCONNECT CONTROL CONDUCTORS BACK TO (CONDUCTORS ALSO TRAVEL THROUGH CLO2).

8 EXISTING SECURITY SYSTEM IS LENEEL "ON GUARD". COORDINATE WITH AN AUTHORIZED LENEEL SERVICE CONTRACTOR AND PROVIDE COMPATIBLE SECURITY SYSTEM CARD READER, ELECTRIC LOCK SET, REQUEST TO EXIT, AND DOOR CONTACT.



CONSULTANTS:

ONE WEBSTER'S LANDING
SYRACUSE, NEW YORK 13202

IPD PROJECT No: 14-8489-8

ARCHITECT/ENGINEERS:

4 COLLAMER ROAD
MALTA, NY 12020
518-581-9428
<http://www.sigmapsi.com>

Approved: Project Director

Location	VAMC SYRACUSE, N.Y.
----------	---------------------

Date
05/14/2018

☐ Checked

Drawn

1

E-307

DWG 19 of 26

