

Revisions: 1, 2, 3, 4, 5, 6, 7, 8, 9

VA FORM 08-6231 FEB. 1983

1 2 3 4 5 6 7 8 9

Project Title: **DRAINAGE, GROUNDWATER & DEBRIS LANDFILL CLOSURE**

Project No: **658-91-116**

Building Number: **N/A**

Location: **VA MED CTR, SALEM VA24153**

Scale: **AS SHOWN**

Scale Number: **6-12-92**

Zone: **5**

Sheet: **5 of 6**

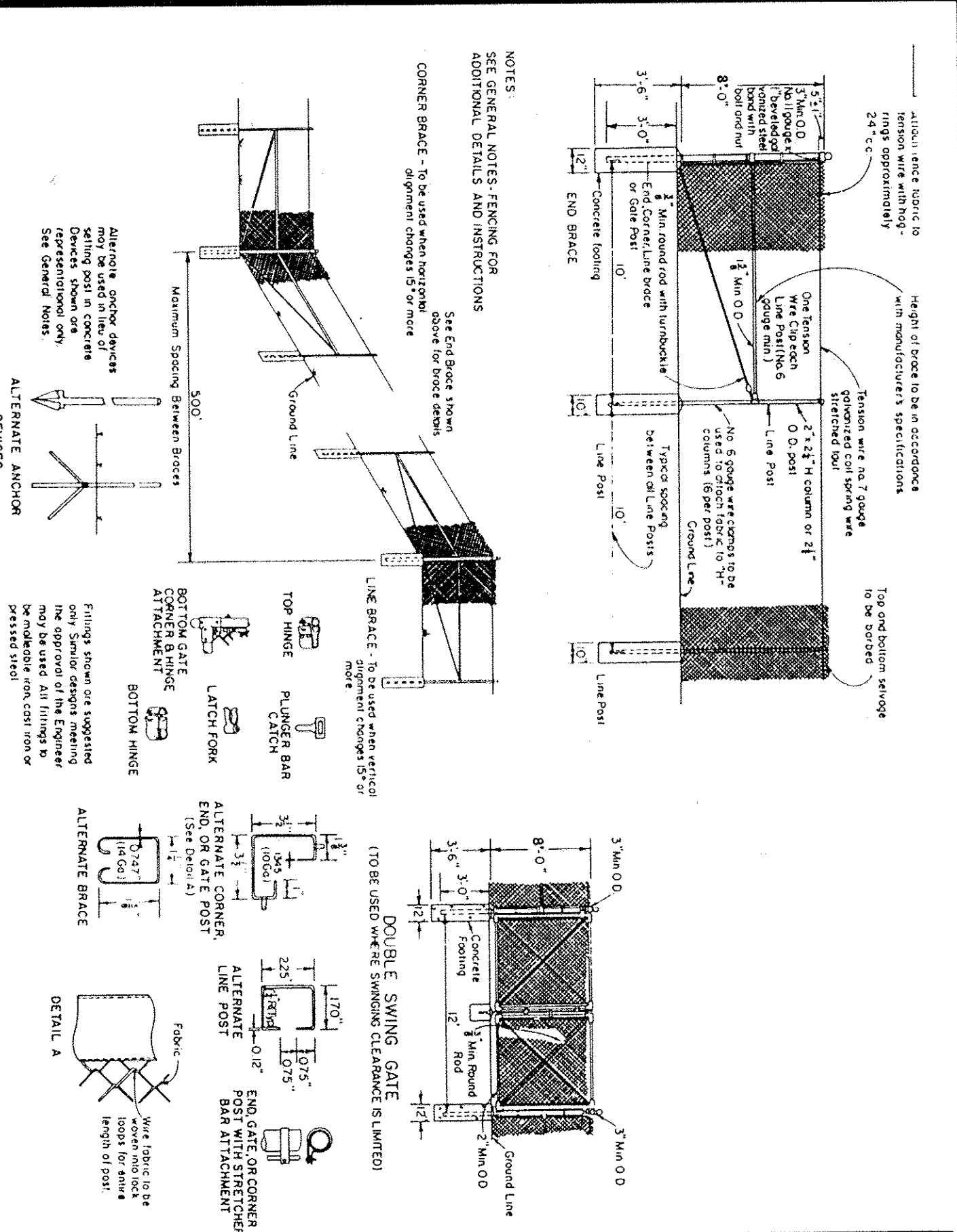
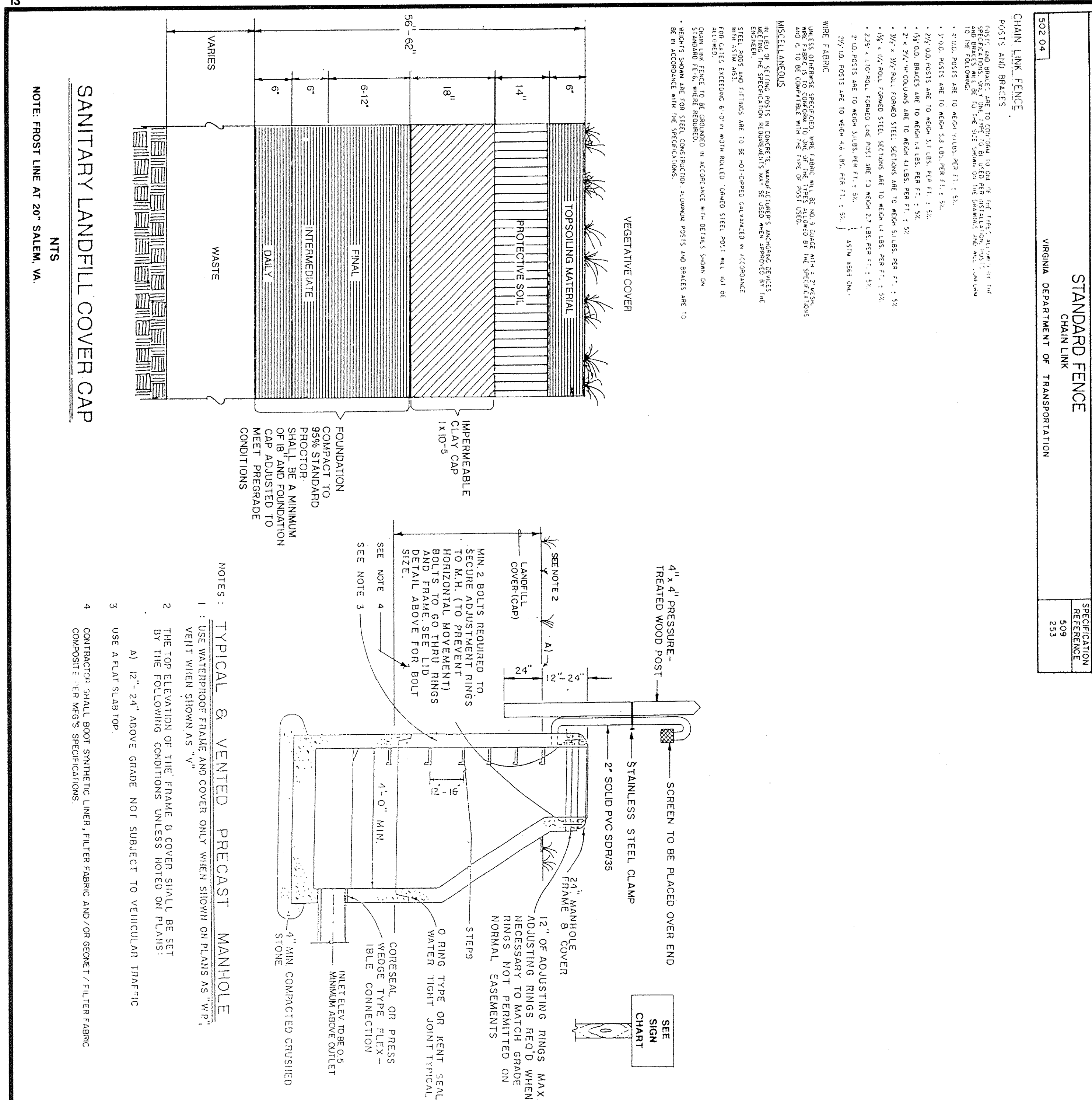
Date: **6-12-92**

Project No: **658-91-116**

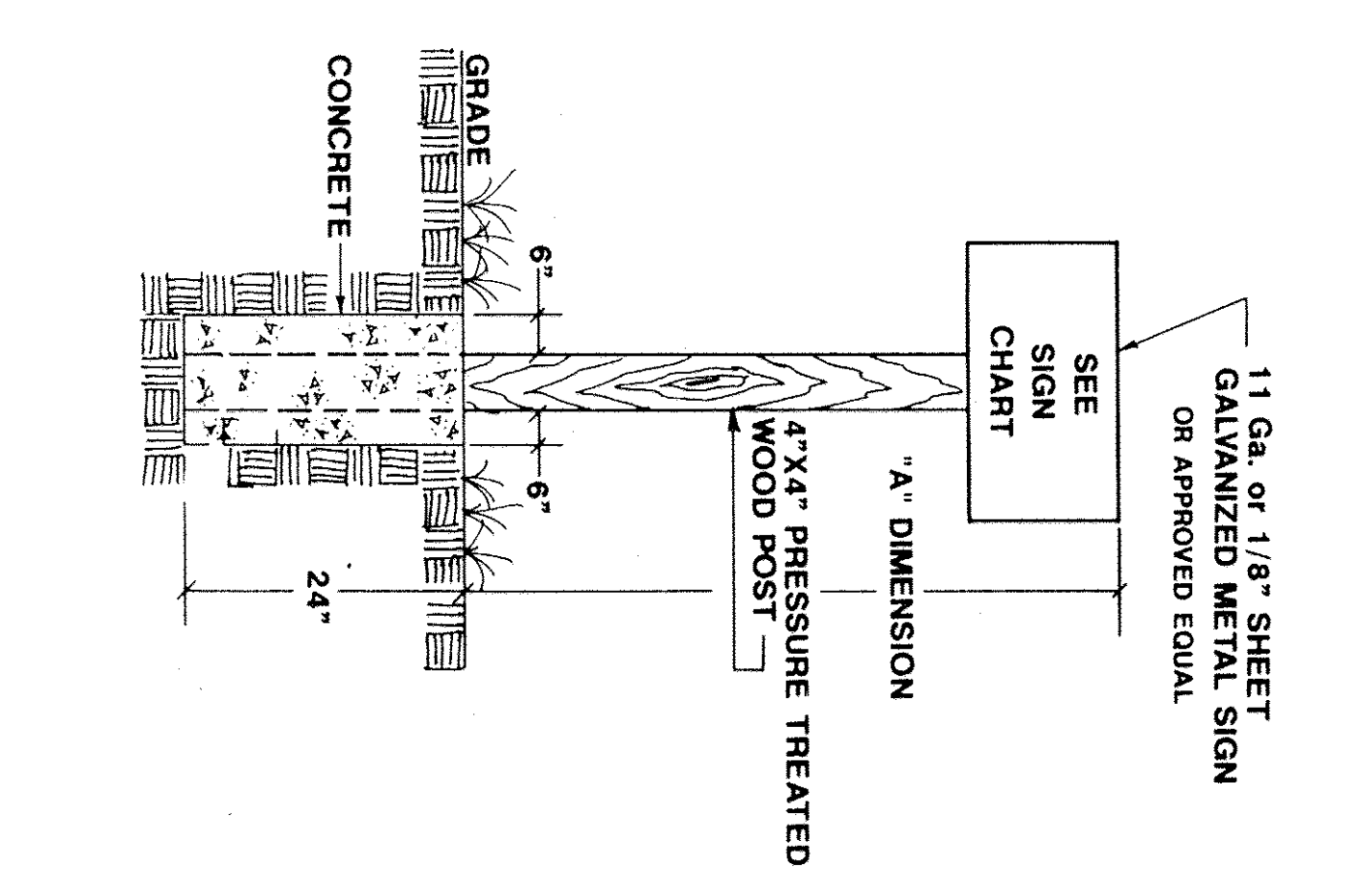
Drawing No: **2124**

Dwg 5 of 6

Veterans Administration



SIGN TEXT	DIMENSION (FT.)	SIGN BACKGROUND	COLOR TEXT	TEXT SIZE	SIGN POSITION ON ONE SIDE	SIGN POSITION TWO SIDES
NO IGNITION SOURCE	6	RED	WHITE	2"		YES
EXPLOSION HAZARD	6	RED	WHITE	2"		YES
DAANGER	6	RED	WHITE	2"		YES
LGW 1+	6	RED	WHITE	2"		YES
LGW 2+	6	RED	WHITE	2"		YES
LGW 3+	6	RED	WHITE	2"		YES
LGW 4+	6	RED	WHITE	2"		YES
LGW 5+	6	RED	WHITE	2"		YES
VENTED MANHOLE	6	RED	WHITE	2"		YES
MM 1+	6	RED	WHITE	2"		YES
MM 2+	6	RED	WHITE	2"		YES
MM 3+	6	RED	WHITE	2"		YES
MM 4+	6	RED	WHITE	2"		YES
DO NOT DISTURB	6	RED	WHITE	2"		YES
LANDFILL PERMANENTLY CLOSED	6	RED	WHITE	2"		YES
ASBESTOS DISPOSAL AREA	6	RED	WHITE	2"		YES
LANDFILL PERMANENTLY CLOSED	6	RED	WHITE	2"		YES



COVER SECTION, DRAINAGE, & DETAILS OTHER

SALEM VA MEDICAL CENTER DEBRIS LANFILL

SALEM, VIRGINIA

Dewberry & Davis

Architects
Engineers
Planners
Surveyors

5238 VALLEYPONTE PARKWAY SUITE ONE-B
ROANOKE, VIRGINIA 24019 (703) 362-7725