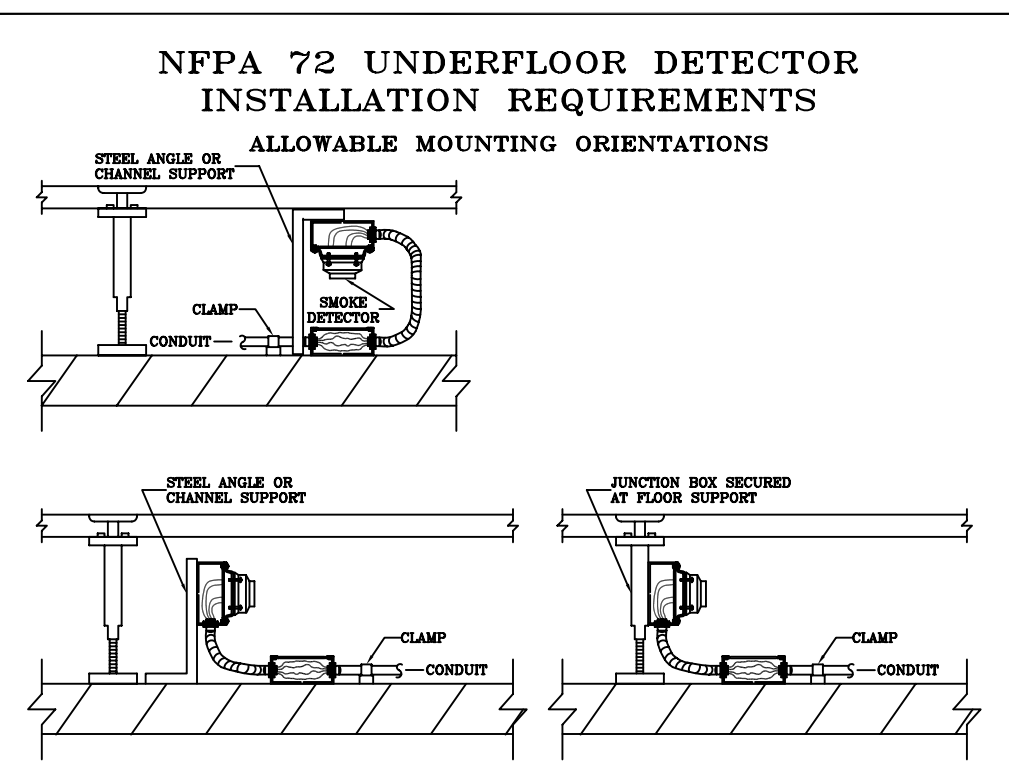


Diagram illustrating the installation requirements for NFPA 72 and ADA devices in a room. The diagram shows a cross-section of a room with a ceiling, walls, and floor. Key components and dimensions are labeled:

- Mounting on Wall:** A "MOUNT ON A 4" SQUARE OR OUTDOOR BOX" is shown for the "SMOKE/HEAT DETECTOR". It is mounted 6'-0" MINIMUM above the floor and 3'-0" MINIMUM from the wall.
- Air Supply Diffuser:** Located on the ceiling.
- Mounting on Ceiling:** A "MOUNT ATTACHABLE TO VISUAL DEVICES ON 4" SQUARE DEEP BOXES" is shown for the "HORN/STROBE". It is mounted 6'-0" MINIMUM above the floor and 3'-0" MINIMUM from the wall.
- Discharge Strobes:** Labeled "DISCHARGE STROBES (SEEN ENTERING)".
- Control Panel:** Labeled "CONTROL PANEL". It is mounted 6'-0" MINIMUM above the floor and 5'-0" MAXIMUM from the wall.
- Manual Pull Station or Abort Switch:** Labeled "MANUAL PULL STATION OR ABORT SWITCH". It is mounted 3'-0" MINIMUM to 6'-0" MAXIMUM above the floor and 5'-0" MAXIMUM from the wall.
- Floor:** The floor is labeled "RAISED FLOOR" and "FINISHED FLOOR".
- Dimensions:**
  - 6'-0" MINIMUM (height from floor to detector/strobe)
  - 3'-0" MINIMUM (distance from wall to detector/strobe)
  - 5'-0" MAXIMUM (distance from wall to control panel/pull station)
  - 3'-0" MINIMUM to 6'-0" MAXIMUM (height from floor to pull station)
  - 15'-0" (height from floor to ceiling)

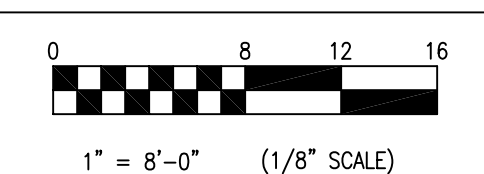


CIRCUIT TYPE	WIRING	SPECIFICATION DETAILS
SLC LOOP	Power Limited Supervised	300mA maximum, 28VDC maximum Maximum Resistance = 70 ohms (35 ohms per leg) Maximum Capacitance = .60 uF 12,000 ft max distance from panel to last device. (total line length, tested using 14 AWG)
Notification Appliance Circuit	Power Limited Supervised No T-Tapping	Regulated 24VDC, 2.0 Amps maximum (Continuous output, 28V)
Auxiliary Power Resettable 24VDC	Power Limited Supervised	24VDC, 2.0 Amps maximum (28V max)
Auxiliary Power Continuous 24VDC	Power Limited Supervised	(2) Separate Circuits 24VDC, 2A max (Regulated 28V max)
Monitor Modules 55-045, 55-041	Max Resistance 100 ohms	EOL 39K
Supervised Control Module, 55-042	NAC Circuit Max Resistance 100 ohms	2.0 amps @ 24VDC EOL 39K
Relay Module 55-043	Max Resistance 100 ohms	Dry Contact Ratings 2.0 amps @ 30VDC, 0.5 amps @120VAC
Releasing Control Module 55-052	24VDC Continuous Output from Terminal P7	Solenoid Max Resistance 5 ohms Agent Release Max Resistance 35 ohms Maximum Current Output 2A @ 24VDC

## WIRING NOTES

- [illegible]

N I C E T



LEVEL IV AUTOMATIC SPRINKLER  
SYSTEM LAYOUT

LEVEL III SPECIAL HAZARDS  
SUPPRESSION SYSTEMS

LEVEL II FIRE ALARM SYSTEMS

DATE:

ECARO-25 DETECTION/RELEASING SYSTEM  
VA MARTINSBURG CRRC  
CAPITAL REGION  
READINESS CENTER  
510 Butler Avenue  
MARTINSBURG, WV

DRAWN BY: JRB				
CHECKED BY: SEP				
SCALE: AS NOTED				
JOB NO: T-10000-FM-09	MARK	REVISION	BY	DATE
DATE: 06-15-09	REVISIONS:	SHEET NO. 1	OF 2	