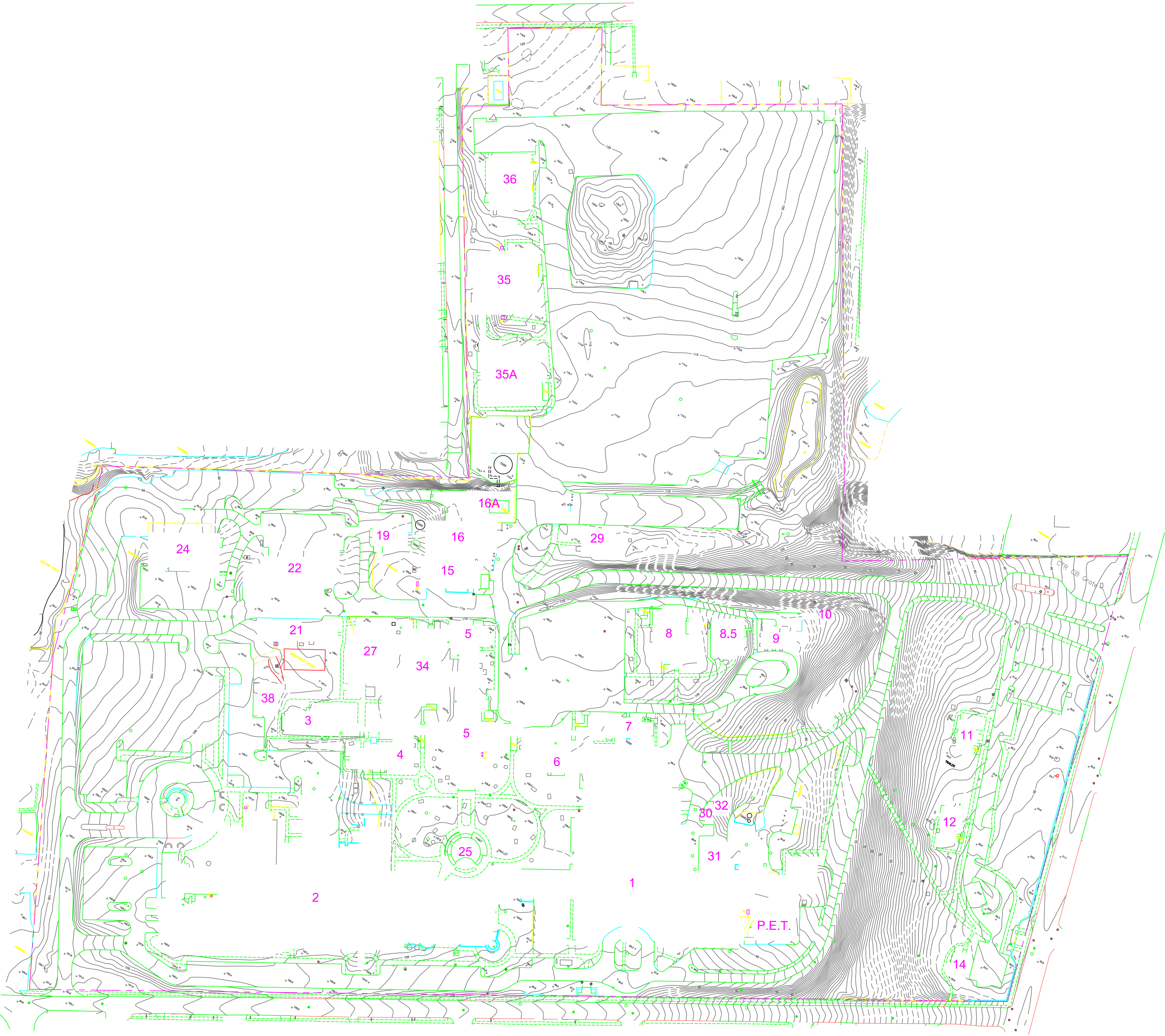


	CURBED CATCH BASIN CURBLESS CATCH BASIN CURBLESS CATCH BASIN-CIRCULAR FIRE HYDRANT MANHOLE CULVERT UTILITY POLE UTILITY POLE WITH LIGHT GUYWIRE LIGHT POLE GENERAL LIGHT TRAFFIC SIGNAL ELECTRICAL BOX TRAFFIC CONTROL BOX POST SIGN DOUBLE SIGN FLAGPOLE MAILBOX SHRUB ROCK SINGLE TREE EVERGREEN	EDGE OF PAVED ROAD/DRIVEWAY/PARKING EDGE OF UNPAVED ROAD/DRIVE/PARKING SIDEWALK CURB TRAIL FENCE STONE WALL RETAINING WALL GUIDERAIL TREE LINE BRUSHLINE HEDGEROW LANDSCAPED AREAS ROCK OUTCROP / LEDGE DEPRESSION CONTOUR APPROXIMATE CONTOUR GROUND OBSERVED APPROXIMATE CONTOUR OUTLINE EDGE OF WATER/STREAM WETLANDS
--	--	---

LEGEND



NOTES:

1. THIS MAP AND SURVEY HAVE BEEN PREPARED IN ACCORDANCE WITH THE REGULATIONS OF CONNECTICUT STATE AGENCIES, SECTIONS 20-300B-1 THRU 20-300B-20, THE MINIMUM STANDARDS FOR SURVEYS AND MAPS IN THE STATE OF CONNECTICUT ENDORSED BY THE CONNECTICUT ASSOCIATION OF LAND SURVEYORS, INC.

A) THE TOPOGRAPHIC ACCURACY CONFORMS TO CLASS "T-3".

B) THE BOUNDARY LINE DEPICTED ON THIS MAP IS TAKEN FROM REFERENCE MAP "4A" AND DOES NOT REPRESENT THIS SURVEYOR'S OPINION AS TO THE LOCATION OF SAID BOUNDARY LINE.

C) THE TYPE OF SURVEY IS A "TOPOGRAPHIC SURVEY".

3. THE NORTH ARROW REFERS TO APPROX. MAGNETIC NORTH.

4. REFERENCE MAP(S):

A. VETERANS ADMINISTRATION HOSPITAL, WILLIAM WIRT WINCHESTER SITE BY MAP DEPARTMENT, CORPUS OF ENGINEERS, DATED DEC. 1947.

B. SITE SURVEY, VETERANS ADMINISTRATION HOSPITAL BY GRIENER, INC. A-E-S, DATED DEC. 1992.

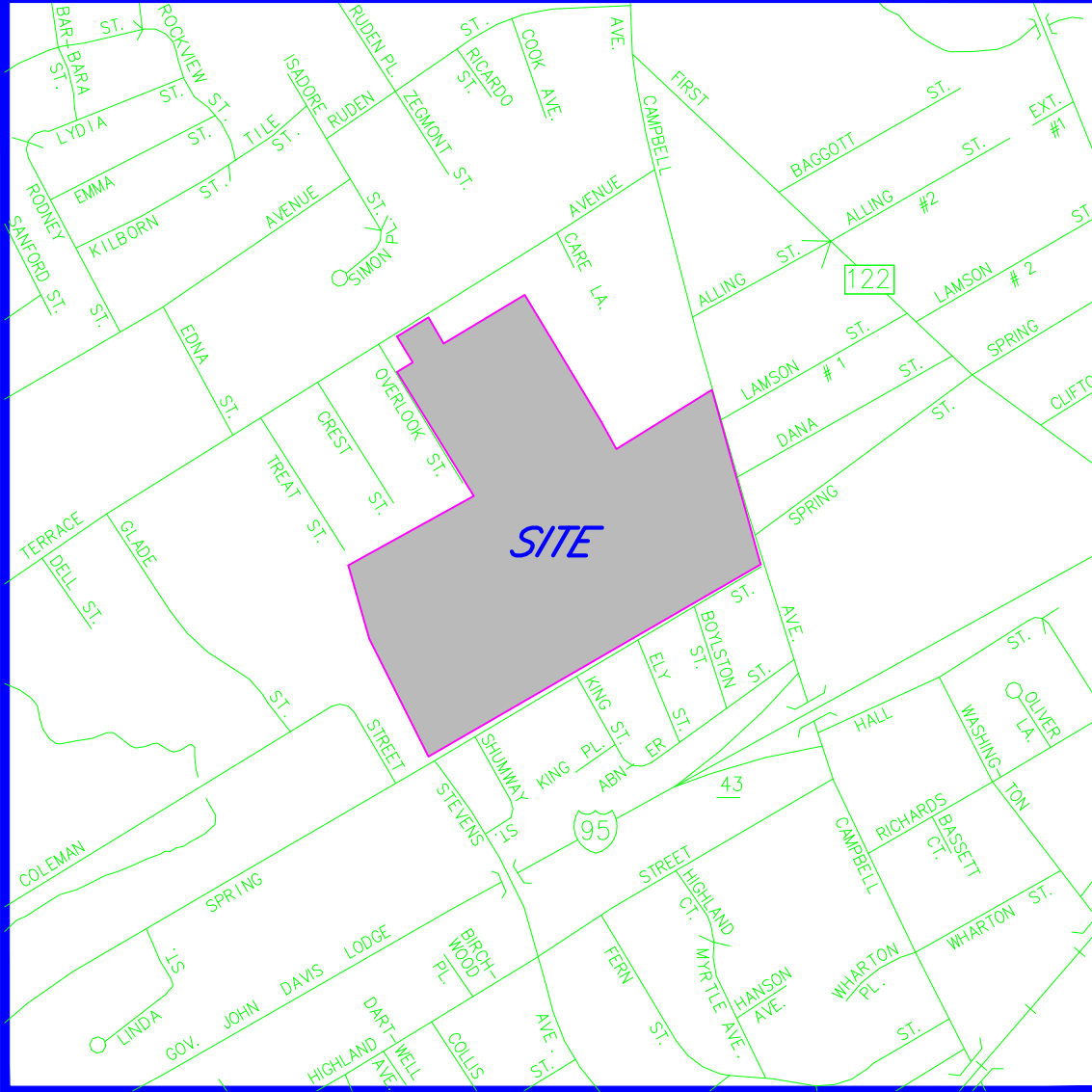
C. SITE UTILITY MAPS BY RP ENGINEERING, DATED SEPT. 14, 1991.

5. BENCHMARKS, ELEVATIONS AND CONTOURS ARE BASED ON THE CONNECTICUT GEODETIC SURVEY OF 1983 (NAVD 88) USING THE FOLLOWING PUBLISHED VALUES: CTS 130 ELEV. 43.00'

6. UNDERGROUND UTILITY, STRUCTURE AND FACILITY LOCATIONS DEPICTED AND NOTED HEREON MAY HAVE BEEN COMPILED, IN PART, FROM RECORD MAPPING SUPPLIED BY THE RESPECTIVE UTILITY COMPANIES OR GOVERNMENTAL AGENCIES, FROM PAROLE TESTIMONY AND FROM OTHER SOURCES. THESE LOCATIONS MUST BE CONSIDERED AS APPROXIMATE IN NATURE. ADDITIONALLY, OTHER SUCH FEATURES MAY EXIST ON THE SITE, THE LOCATIONS OF WHICH ARE UNKNOWN TO GODFREY-HOFFMAN ASSOCIATES. THE SIZE, LOCATION AND EXISTENCE OF ALL SUCH FEATURES MUST BE FIELD DETERMINED AND VERIFIED BY THE APPROPRIATE AUTHORITIES PRIOR TO CONSTRUCTION. CALL BEFORE YOU DIG 1-800-922-4455.

TO THE BEST OF MY KNOWLEDGE AND BELIEF THIS MAP IS SUBSTANTIALLY CORRECT AS NOTED HEREON.

ADAM HOFFMAN, L.S. #15168
NOT VALID WITHOUT LIVE SIGNATURE AND SEAL.



SITE LOCATION MAP
SCALE: 1"=800'

Revisions	Date	 GODFREY-HOFFMAN ASSOCIATES, LLC PROFESSIONAL LAND SURVEYORS & CONSULTING ENGINEERS 26 BROADWAY, NORTH HAVEN, CT 06473 TEL: 203.239.4217 FAX: 203.234.2088 WWW.GODFREYHOFFMAN.COM	 SINCE 1924	Professional Seal	ALL WORK, LABOR, AND MATERIALS TO BE IN STRICT ACCORDANCE WITH ALL APPLICABLE CODES AND LAWS WHICH SHALL TAKE PRECEDENCE OVER THESE DRAWINGS IN THE EVENT OF ERRORS AND/OR OMISSIONS HEREIN. THE WORD "CERTIFY" OR "DECLARE" IS UNDERSTOOD TO BE AN EXPRESSION OF PROFESSIONAL OPINION BY THE LAND SURVEYOR AND/OR ENGINEER, WHICH IS BASED ON THEIR BEST KNOWLEDGE, INFORMATION AND BELIEF, AS SUCH IT CONSTITUTES NEITHER A GUARANTEE OR WARRANTY. THE INFORMATION CONTAINED HEREIN IS THE PROPRIETARY AND CONFIDENTIAL PROPERTY OF GODFREY-HOFFMAN ASSOCIATES, LLC. REPRODUCTIONS, PUBLICATION, DISTRIBUTION, OR DUPLICATION IN WHOLE OR IN PART REQUIRES THE WRITTEN PERMISSION OF GODFREY-HOFFMAN ASSOCIATES, LLC. THIS DOCUMENT AND COPIES THEREOF ARE VALID ONLY IF THEY BEAR THE LIVE SIGNATURE AND LIVE SEAL OF THE DESIGNATED LICENSED PROFESSIONAL. © COPYRIGHT 2008, ALL RIGHTS RESERVED	Drawing Title TOPOGRAPHIC SURVEY SCALE = 1"=100' 0 50 100 150 200 250	Project Title PROPERTY OF VA CONNECTICUT HEALTHCARE SYSTEM 897 CAMPBELL AVENUE WEST HAVEN, CONNECTICUT	Date 03-15-08 Project No. 08-007	 VAMC, WEST HAVEN Department of Veterans Affairs
						Approved: Project Manager	Building Number Checked AH	Drawn CKB	
					Approved: Service Chief	Location VACHS West Haven Campus			