



Detail 1: Abate floor, install new VCT. Remove materials, equipment, and trash. Abate lead painted walls, remove drywall, install new drywall and paint.



Detail 2: Remove all equipment, materials, heating units, and storage.



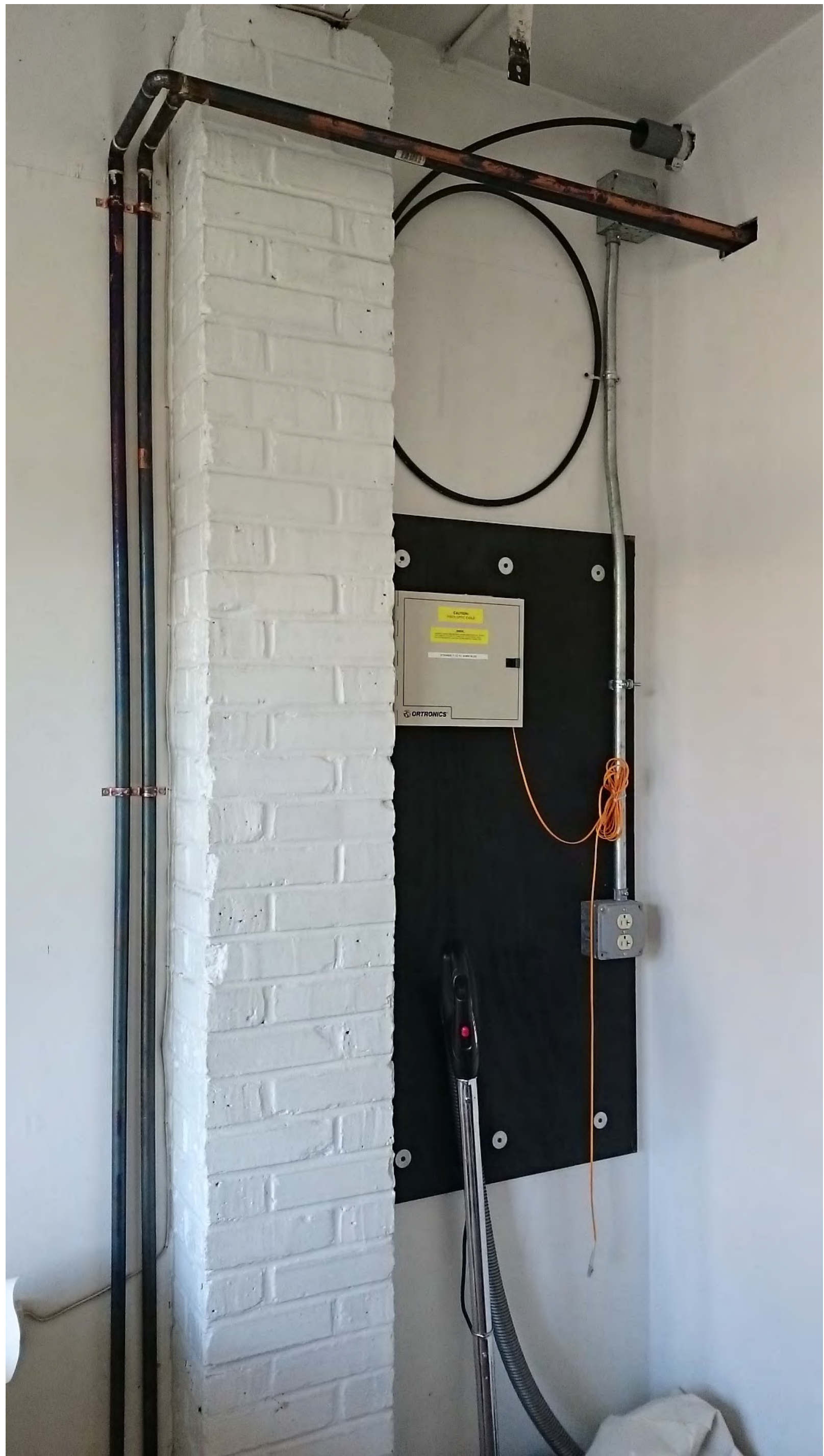
Detail 3: View of the doors into the MEP and Restroom. Note the painted brick, painted drywall and plaster walls. Note the ceiling. Restroom. Remove materials, equipment. See specifications for all work requirements.



Detail 4: Examples of wood shelving to be demolished.





Detail 5: Note area of severe water damage and mold. Demolish ceiling. New work shall not install a new ceiling, but leave an open ceiling plan. Demolish all plumbing, heating, electrical and install new per design build drawing submitted. See specifications for more information.



Detail 6: Protect fiber panel and cabling throughout building.



Detail 7: Existing electrical panel. Panel is to be reused, but all existing circuits are to be demolished and replaced with new cable in conduit. See statement of work for more information.

										N ATIONAL C EMETERY A DMINISTRATION		Drawing Title		Project Title Renovate Maintenance Building Interior		Project Number 926-NRM18-16		Office of Facilities Management 	
												Approved: Project Director		Location Beverly National Cemetery		Building Number			
														Date 5-3-18		Checked RJS			