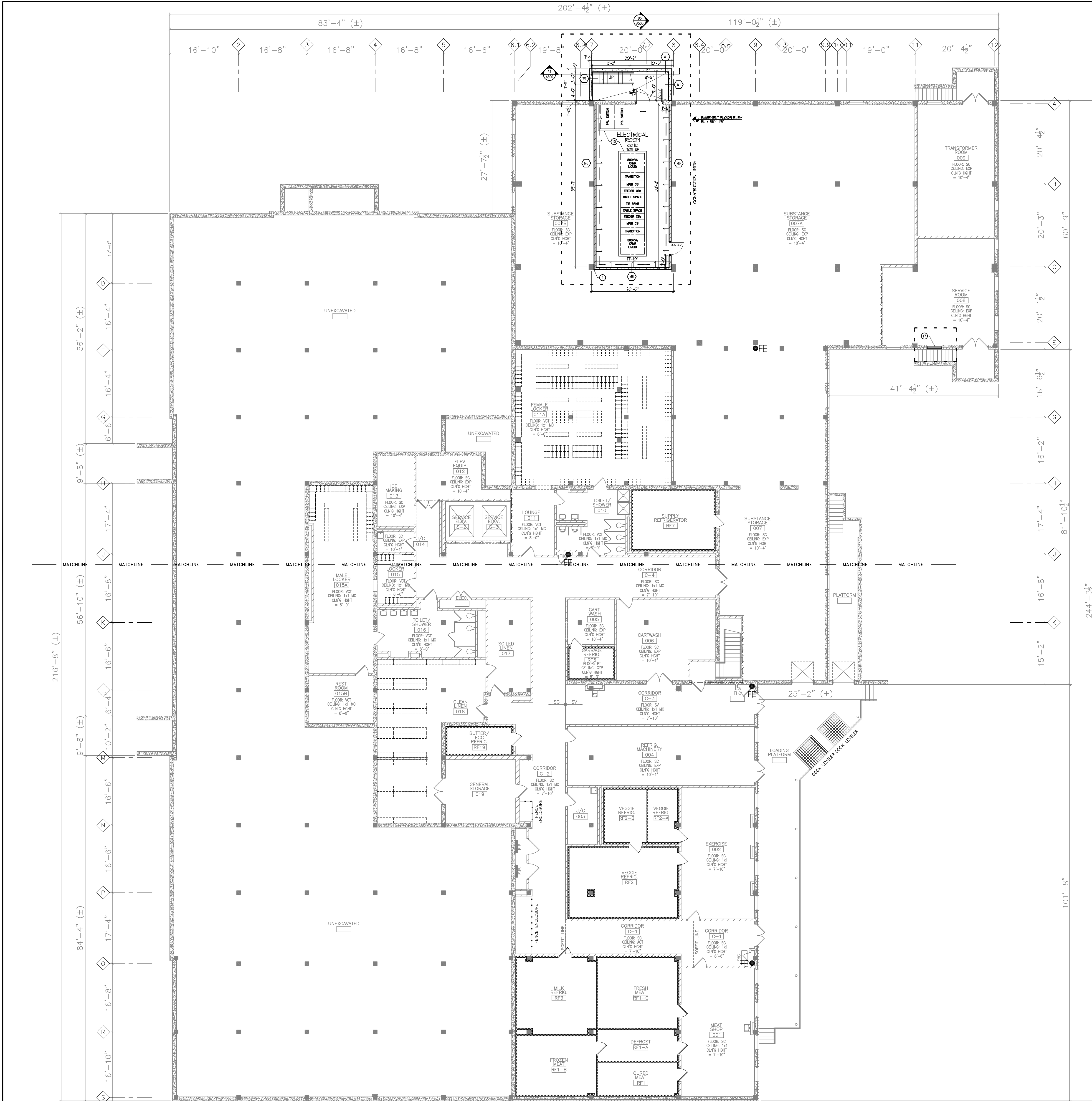


three inches = one foot  
one and one half inches = one foot  
one inch = one foot  
three quarters inch = one foot  
one half inch = one foot  
three eighths inch = one foot  
one quarter inch = one foot  
one eighth inch = one foot



OVERALL BASEMENT FLOOR PLAN  
3/32"=1'-0"

<b>FINAL BID DOCUMENTS</b>		<b>Project Number</b> 556-11-119		<b>Office of Facilities Management</b>
<b>90% CONSTRUCTION DOCUMENTS SUBMISSION</b> 05-17-12		<b>Building Number</b> 6		
<b>50% CONSTRUCTION DOCUMENTS SUBMISSION</b> 04-06-12		<b>Drawing Number</b> AS-200		
<b>35% DOCUMENTS SUBMISSION</b> 02-22-12		<b>Location</b> North Chicago, IL		<b>Department of Veterans Affairs</b>
<b>SCHEMATIC DESIGN SUBMISSION</b> 11-21-11		<b>Date</b> June 26, 2012		
<b>Revisions:</b>		<b>Checked By:</b> PRA <b>Drawn By:</b> RLS		

**Federal Health Care Center**  
U.S. Department of Veterans Affairs | U.S. Department of Defense

**Captain James A. Lovell**  
Federal Health Care Center  
3001 Green Bay Road  
North Chicago, IL, 60064

**CONSULTANTS:**

**ARNOLD & O'SHERIDAN**  
Consulting Engineers

**CHEQUAMEGON BAY ENGINEERING, INC.**

**MACKESEY AND ASSOCIATES, LLC**

**PROJECT LEADER:**

**Plunkett Architects**  
11000 West Park Place • Milwaukee WI 53224 • Tel 414 359-3060 • Fax 414 359-3070

**Intelligent Designs**  
www.prarch.com

**Inspired Results**  
PRA Job No. 110172-01