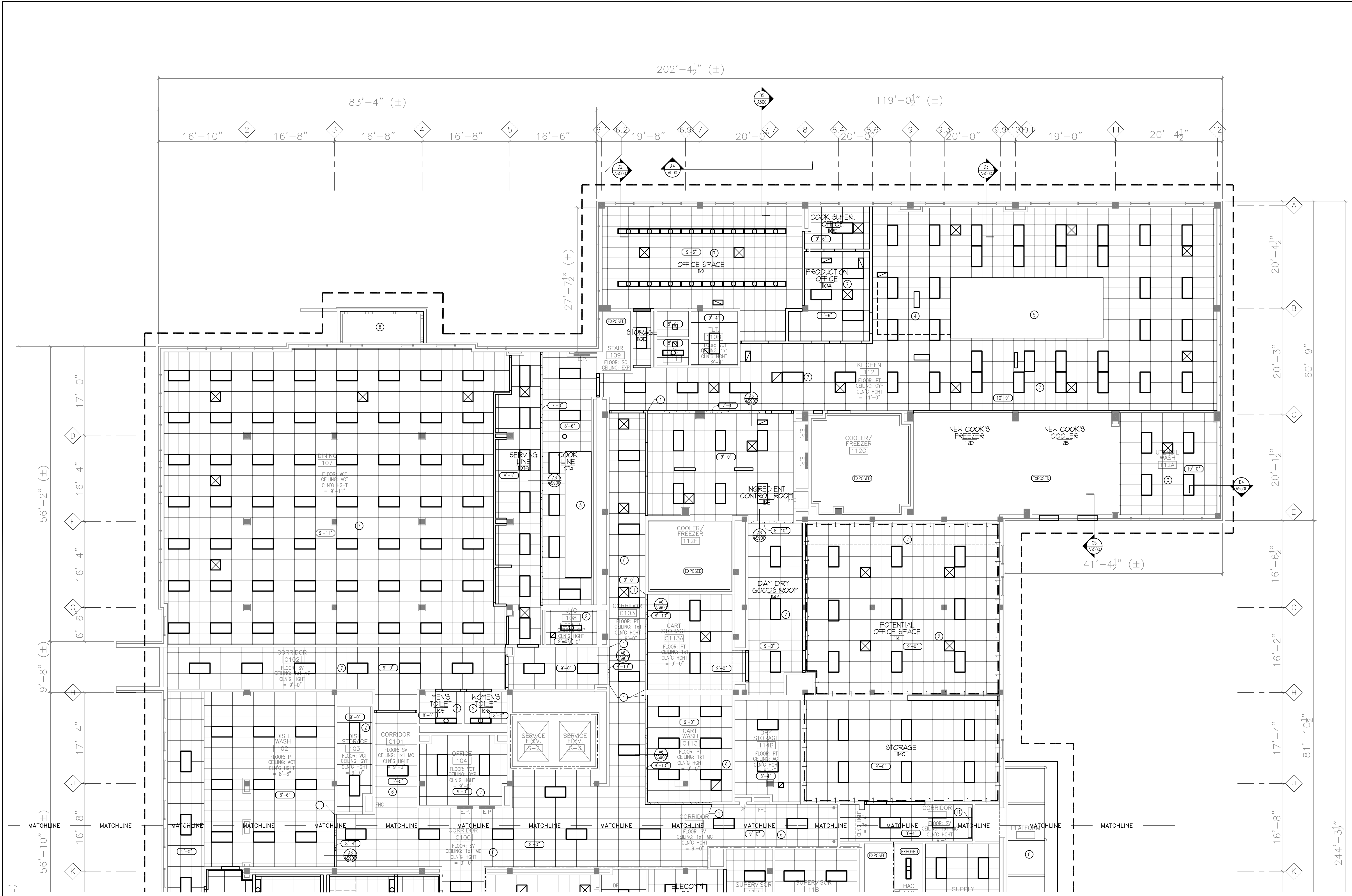
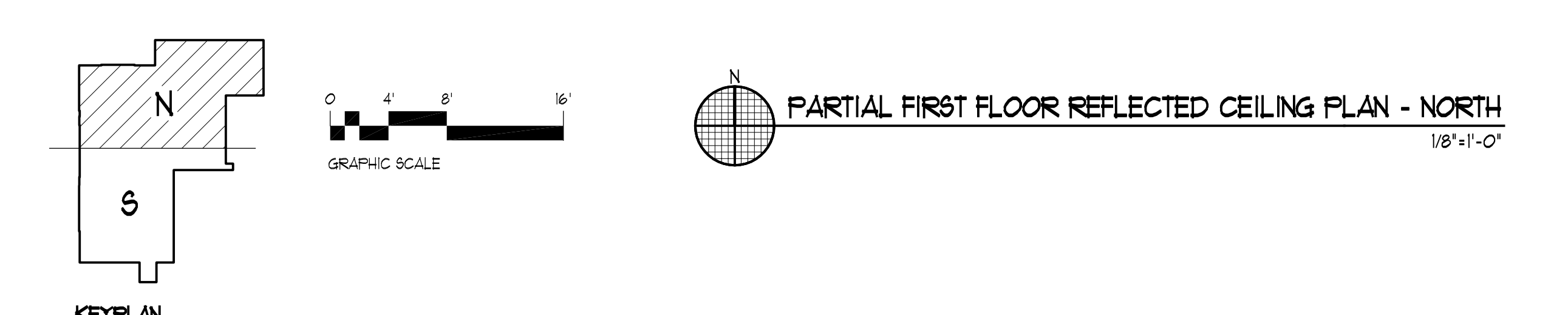


three inches = one foot
one and one half inches = one foot
one inch = one foot
three quarters inch = one foot
one half inch = one foot
three eighths inch = one foot
one quarter inch = one foot
one eighth inch = one foot



- REFLECTED CEILING PLAN - SYMBOLS LEGEND**
- 2'-0" x 2'-0" SUSPENDED EXPOSED GRID ACOUSTIC CEILING TILE
 - RETURN, TRANSFER, EXHAUST GRILLE
 - SUPPLY GRILLE
 - SLOT DIFFUSER
 - 1 x 4 FLUORESCENT LIGHT
 - 2 x 2 FLUORESCENT LIGHT
 - 2 x 4 FLUORESCENT LIGHT
 - SURFACE-MOUNTED FLUORESCENT LIGHT
 - FLUORESCENT TROFFER LIGHT
 - FLUORESCENT COVE LIGHT
 - SURFACE-MOUNTED LIGHT
 - RECESSED DOWN LIGHT
 - EXIT LIGHT
 - AUDIO SPEAKER
 - SMOKE DETECTOR
 - HEAT DETECTOR
 - GYPSUM BOARD CEILING OR BULKHEAD
 - CEILING HEIGHT
 - REFLECTED CEILING PLAN NOTE
 - CONSTRUCTION LIMITS
 - ONE HOUR FIRE RESISTIVE CONSTRUCTION
- REFLECTED CEILING PLAN - GENERAL NOTES**
- PERIMETER CEILING TILES SHALL NOT BE LESS THAN 4".
 - LOCATE ALL SPRINKLER HEADS, SMOKE DETECTORS, AUDIO SPEAKERS, HEAT SENSORS IN THE CENTER OF CEILING TILE (OR IN THE CENTER OF THE RAISED RECESSED FIELD OF A PATTERNED TILE).
 - REMOVE EXISTING CEILING SYSTEM WHERE NEW WALLS PENETRATE EXISTING CEILING SYSTEMS TO REMAIN. PATCH TO MATCH EXISTING CEILING SYSTEM TO NEW WALL.
 - CEILING HEIGHTS SHALL BE (3'-0") UNLESS NOTED OTHERWISE ON THE REFLECTED CEILING PLANS.
- REFLECTED CEILING PLAN NOTES**
- ALIGN
 - REMOVE EXISTING GYPSUM CEILING SYSTEM FOR INSTALLATION OF NEW MEPS AND SPRINKLER SYSTEM. REPLACE WITH NEW ACOUSTICAL CEILING SYSTEM.
 - EXISTING CEILING SYSTEM TO REMAIN. NEW ACOUSTICAL CEILING SYSTEM TO BE INSTALLED AFTER NEW MEPS AND SPRINKLER SYSTEMS HAVE BEEN INSTALLED.
 - FILL IN EXISTING GYP BD CEILING WHERE EXISTING EXHAUST HOOD IS REMOVED.
 - NEW PIPE EXHAUST HOOD.
 - REMOVE EXISTING 1x4" CEILING SYSTEM FOR INSTALLATION OF NEW MEPS AND SPRINKLER SYSTEM. REPLACE WITH NEW ACOUSTICAL CEILING SYSTEM.
 - REMOVE EXISTING ACOUSTICAL CEILING SYSTEM FOR INSTALLATION OF NEW MEPS AND SPRINKLER SYSTEM. REPLACE WITH NEW ACOUSTICAL CEILING SYSTEM.
 - SCRAPE, PRIME AND PAINT EXISTING HOOD SOFFIT.
 - EXISTING GYP BD SOFFIT TO REMAIN.
 - EXISTING FOLDING PARTITION WALL TO REMAIN.
 - NEW AIR CURTAIN. COORDINATE W/ HVAC DRAWINGS.



PARTIAL FIRST FLOOR REFLECTED CEILING PLAN - NORTH
1/8"=1'-0"

FINAL BID DOCUMENTS		Project Number 556-11-119		Office of Facilities Management	
90% CONSTRUCTION DOCUMENTS SUBMISSION 05-17-12		Building Number 6			
50% CONSTRUCTION DOCUMENTS SUBMISSION 04-06-12		Drawing Number AS-301N		Department of Veterans Affairs	
35% DOCUMENTS SUBMISSION 02-22-12		Date June 26, 2012			
SCHEMATIC DESIGN SUBMISSION 11-21-11		Checked By: PRA		Drawn By: RLS	
Revisions:		Date			

Federal Health Care Center
U.S. Department of Veterans Affairs | U.S. Department of Defense

Captain James A. Lovell
Federal Health Care Center
3001 Green Bay Road
North Chicago, IL, 60064

CONSULTANTS:

ARNOLD & O'SHERIDAN
Consulting Engineers

CHEQUAMEGON BAY ENGINEERING, INC.

MACKESY AND ASSOCIATES, LLC

PROJECT LEADER:

Plunkett Rysch Architects

11000 West Park Place • Milwaukee WI 53224 • Tel 414 359-3060 • Fax 414 359-3070

Intelligent Designs **Inspired Results**

www.prarch.com

PRA Job No. 110172-01

Drawing Title
Partial First Floor Reflected Ceiling Plan - North

Approved: Project Director

Project Title
AE SCIP for Building 6 FHCC

Location
North Chicago, IL