

three inches = one foot  
one and one half inches = one foot  
one inch = one foot  
three quarters inch = one foot  
one half inch = one foot  
three eighths inch = one foot  
one quarter inch = one foot  
one eighth inch = one foot

A

B

C

D

E

F

G

H

1

2

3

4

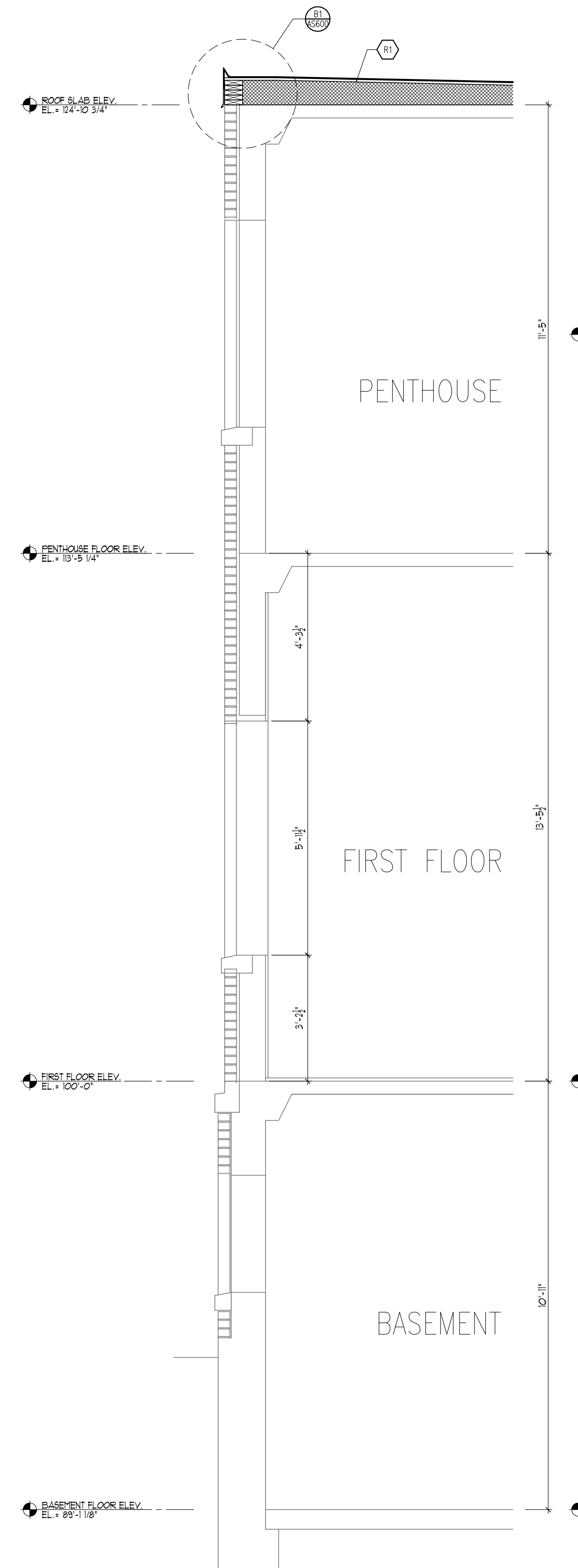
5

6

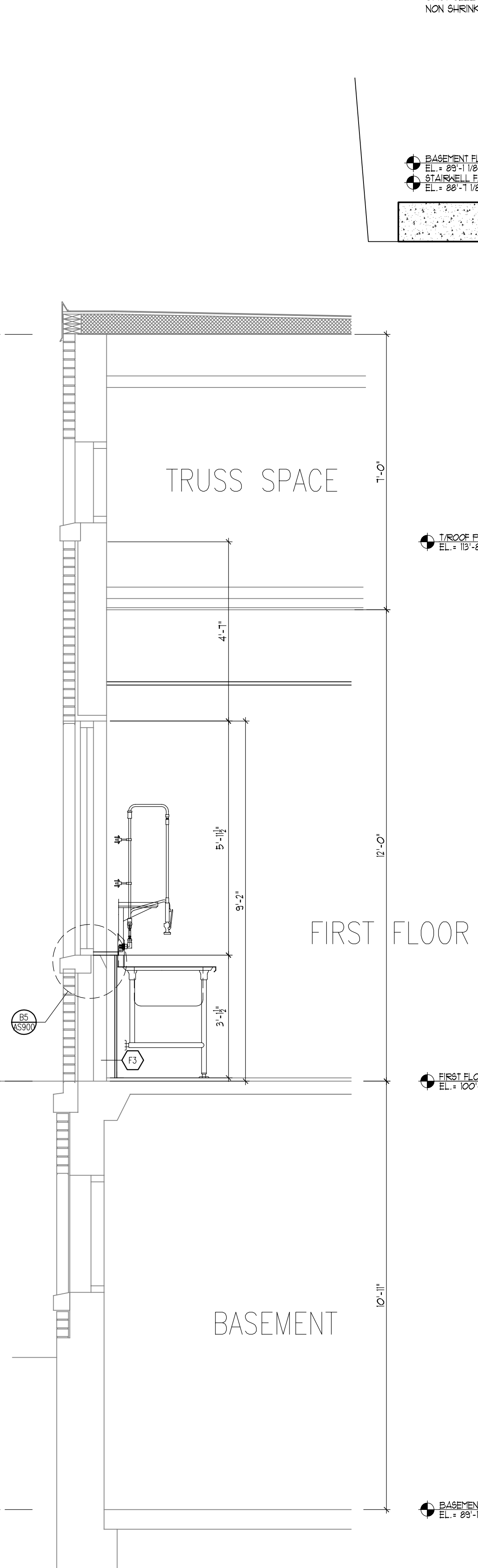
7

8

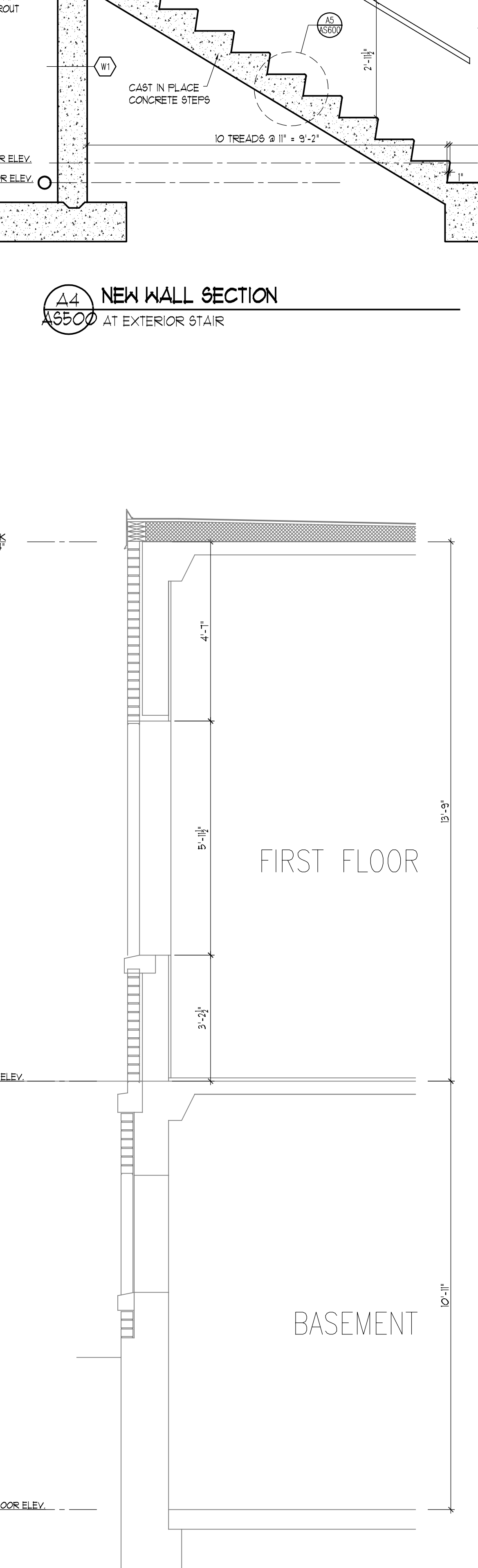
9



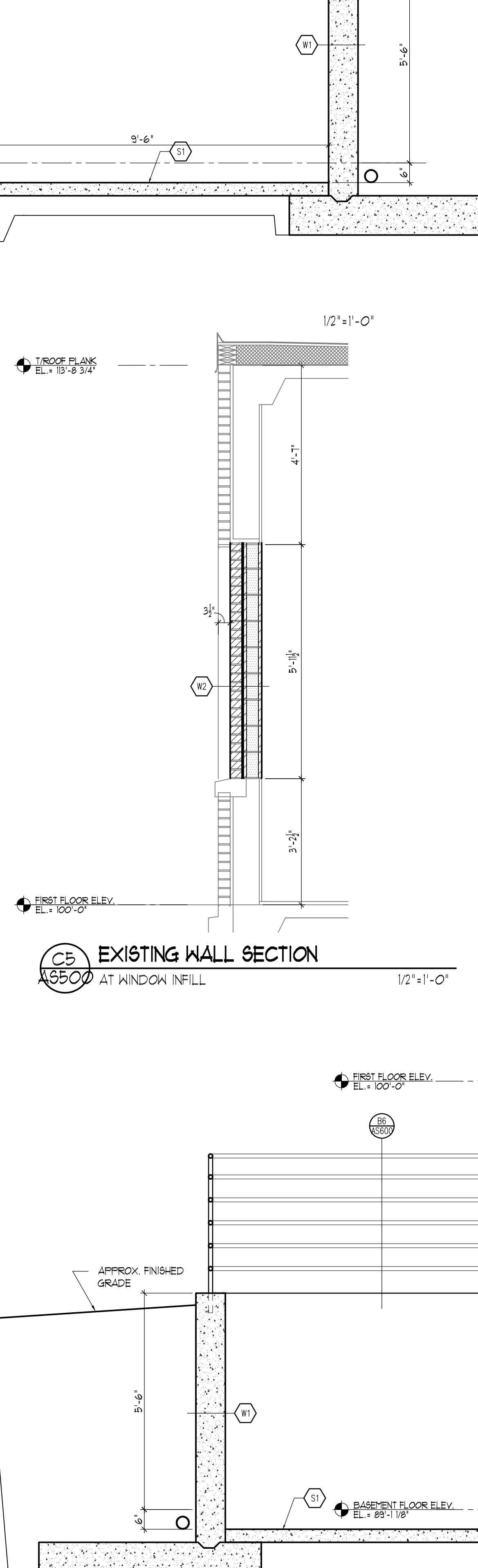
D2 EXISTING WALL SECTION  
1/2"=1'-0"



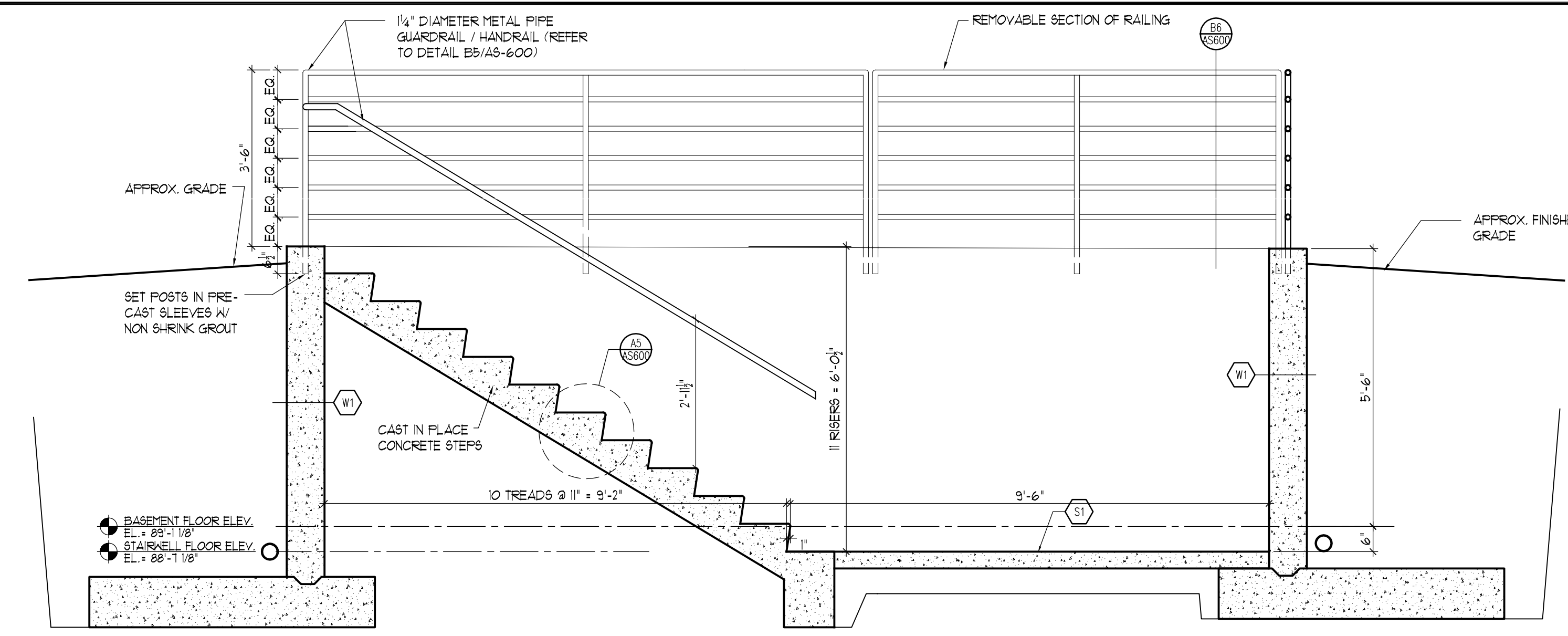
D3 EXISTING WALL SECTION  
1/2"=1'-0"



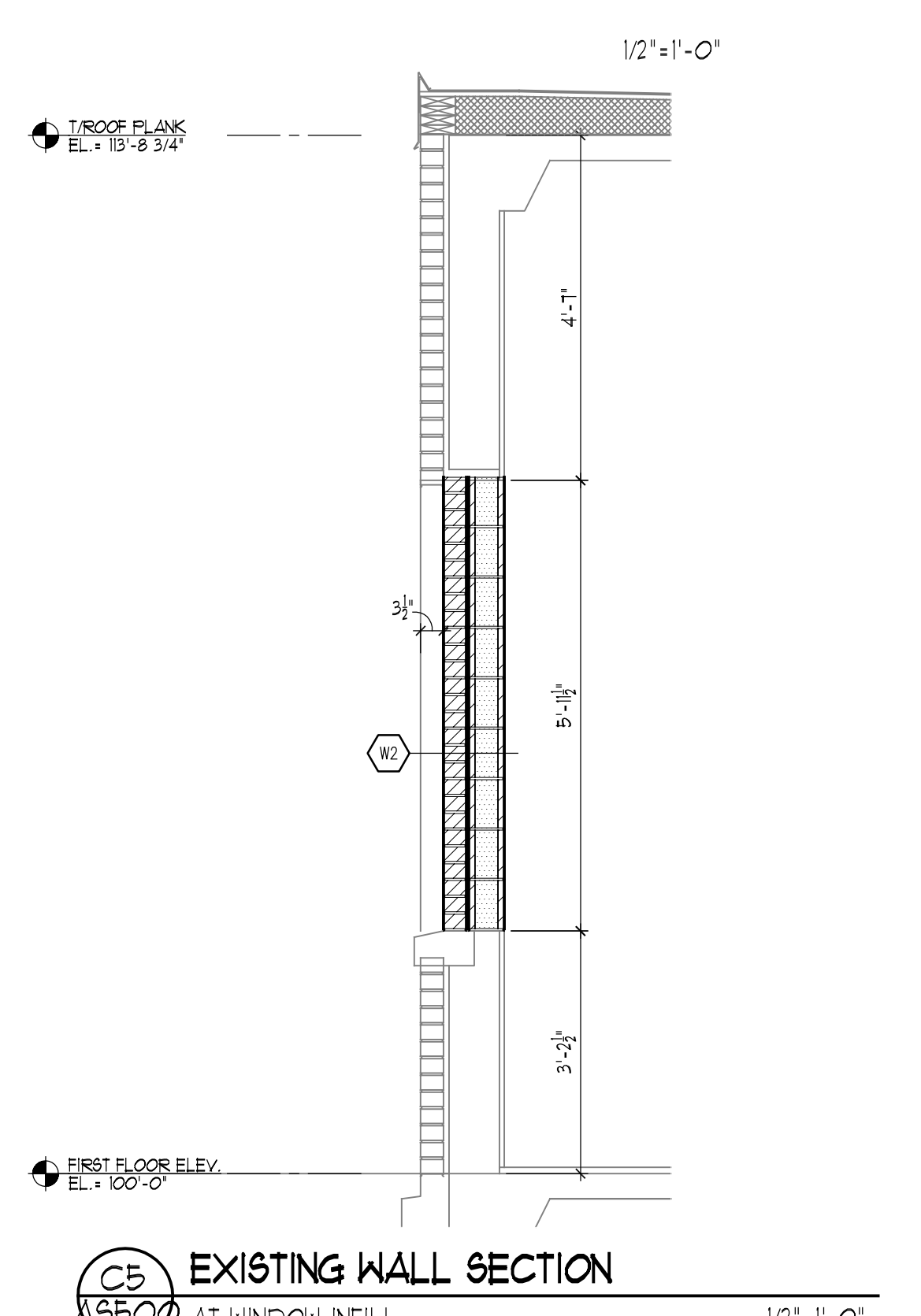
D4 EXISTING WALL SECTION  
1/2"=1'-0"



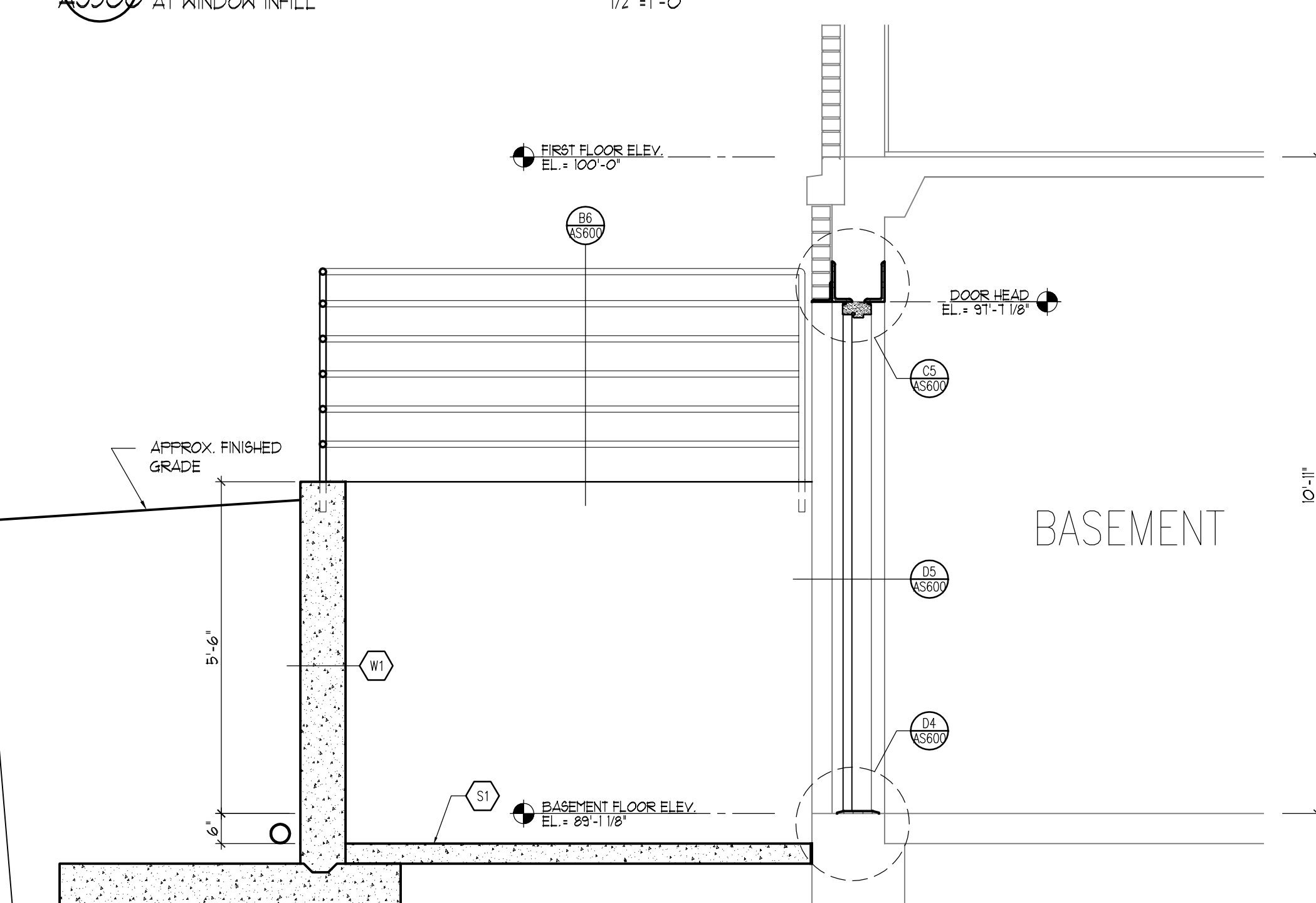
D5 NEW WALL SECTION  
1/2"=1'-0"



D4 NEW WALL SECTION  
AT EXTERIOR STAIR

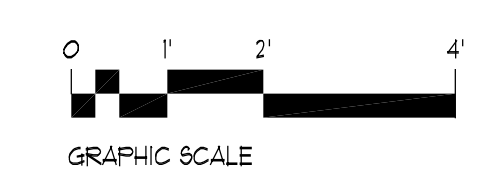


C5 EXISTING WALL SECTION  
AT WINDOW INFILL



D5 NEW WALL SECTION  
AT EXTERIOR STAIR

- EXTERIOR WALL TYPE LEGEND**
- W1 EXTERIOR WALL: CAST-IN-PLACE CONCRETE RETAINING WALL
  - W2 EXTERIOR WALL: MULTI-WYTHE MASONRY WALL CONSISTING OF 4" FACE BRICK WITH 6" CONCRETE MASONRY BACK-UP W/ INSULATED CORES. PROVIDE HORIZONTAL MASONRY JOINT REINFORCING @ 16" OC (REFER TO STRUCTURAL DRAWINGS FOR REQUIRED VERTICAL REINFORCING); KEEP HOLES @ 16" OC, FLASHING, EXPANSION AND CONTROL JOINTS.
  - W3 EXTERIOR WALL: MULTI-WYTHE MASONRY WALL CONSISTING OF 4" FACE BRICK WITH 8" CONCRETE MASONRY BACK-UP W/ INSULATED CORES. PROVIDE HORIZONTAL MASONRY JOINT REINFORCING @ 16" OC (REFER TO STRUCTURAL DRAWINGS FOR REQUIRED VERTICAL REINFORCING); KEEP HOLES @ 16" OC, FLASHING, EXPANSION AND CONTROL JOINTS.
  - W6 EXTERIOR WALL (BELOW GRADE): REINFORCED CAST-IN-PLACE CONCRETE FOUNDATION WALL WITH SHEET PILE WATERPROOFING. TERMINATE ALL WATERPROOFING PERIMETER EDGED WITH 1/4" X 1" ALUMINUM COMPRESSION BAR WITH CONTINUOUS SEALANT. (EDIT FOR WATERPROOFING); PROVIDE 2" RIGID FOUNDATION INSULATION, EXTEND FULL HEIGHT VERTICALLY.
- CONSTRUCTION KEYNOTE LEGEND**
- C1 LAY-IN CEILING PANELS IN EXPOSED GRID SYSTEM SUSPENDED FROM STRUCTURE ABOVE.
  - C2 5/8" GYPSUM BOARD CEILING ON METAL SUSPENSION SYSTEM SUSPENDED FROM STRUCTURE ABOVE.
  - C3 1 HR RATED SHAFT WALL CEILING: KHI DESIGN 435 PSH 054/0161, ONE LAYER 5/8" TYPE 'X' GYPSUM BOARD ON 2 1/2" STEEL SHAFTWALL STUDS @ 24" OC W/ 1" TYPE 'X' GYPSUM BOARD LINER PANEL @ CONCEALED FACE.
  - C9 2 HR RATED SHAFT WALL CEILING: KHI DESIGN 435 PSH 054/0161, TWO LAYERS 1/2" TYPE 'X' GYPSUM BOARD ON 2 1/2" STEEL SHAFTWALL STUDS @ 24" OC W/ 1" TYPE 'X' GYPSUM BOARD LINER PANEL @ CONCEALED FACE.
  - E1 ALUMINUM WINDOW SYSTEM WITH INSULATING GLASS.
  - E2 ALUMINUM STOREFRONT SYSTEM WITH INSULATING GLASS.
  - E3 ALUMINUM ENTRANCE SYSTEM WITH TEMPERED INSULATING GLASS (EDIT FOR SCHOOLS: 1/4" TEMPERED GLASS IN DOORS).
  - E7 THERMALLY INSULATED METAL DOOR.
  - F1 METAL FASCIA SYSTEM: METAL GRAVEL STOP ON TREATED 2x WOOD BLOCKING.
  - F2 METAL COPING SYSTEM: METAL COPING ON TREATED 2x WOOD BLOCKING.
  - F3 METAL GUTTER AND DOWNSPOUT. (EDIT FOR SIZE & STYLE).
  - F4 SCUPPER. (EDIT FOR SIZE & STYLE).
  - F5 METAL COUNTERFLASHING: ONE PIECE SURFACE MOUNTED METAL COUNTERFLASHING WITH MECHANICAL FASTENERS @ 12" OC W/ NEOPRENE WASHERS & EXPOSED FASTENER HEADS.
  - F6 METAL COUNTERFLASHING: ONE PIECE WEDGED-IN-PLACE METAL COUNTERFLASHING IN OPEN MORTAR JOINT, SAW CUT JOINT (1/4" HIGH X 1/2" DEEP). SECURE 1/4" LONG MOUNTING FLANGE W/ METAL WEDGES & SEAL W/ BACKER ROD & SEALANT.
  - R1 BUILT-UP ROOFING (BUR) SYSTEM: SURFACING ON BUILT-UP ROOFING ON INSULATION ON THERMAL BARRIER.
  - R2 ASPHALT SHINGLE ROOFING SYSTEM: SHINGLES ON UNDERLAYMENT. SEE ROOF PLAN FOR LOCATION(S) OF ICE & WATER BARRIER.
  - S1 4" REINFORCED CONCRETE SLAB ON VAPOR RETARDER ON 6" DRAINAGE FILL.



<b>FINAL BID DOCUMENTS</b>		<b>Federal Health Care Center</b> U.S. Department of Veterans Affairs   U.S. Department of Defense		<b>Captain James A. Lovell</b> Federal Health Care Center 3001 Green Bay Road North Chicago, IL, 60064		<b>CONSULTANTS:</b> <b>ARNOLD &amp; O'SHERIDAN</b> Consulting Engineers <b>CHEQUAMEGON BAY ENGINEERING, INC.</b>		<b>PROJECT LEADER:</b> <b>Plunkett Raysich Architects</b> 11000 West Park Place • Milwaukee WI 53224 • Tel 414 359-3060 • Fax 414 359-3070 <b>Intelligent Designs</b> <b>Inspired Results</b> www.prarch.com PRA Job No. 110172-01		<b>Drawing Title</b> Exterior Wall Sections		<b>Project Title</b> AE SCIP for Building 6 FHCC		<b>Project Number</b> 556-11-119		<b>Office of Facilities Management</b>	
90% CONSTRUCTION DOCUMENTS SUBMISSION 05-17-12		05-17-12		05-17-12		05-17-12		05-17-12		05-17-12		05-17-12		05-17-12		05-17-12	
50% CONSTRUCTION DOCUMENTS SUBMISSION 04-06-12		04-06-12		04-06-12		04-06-12		04-06-12		04-06-12		04-06-12		04-06-12		04-06-12	
35% DOCUMENTS SUBMISSION 02-22-12		02-22-12		02-22-12		02-22-12		02-22-12		02-22-12		02-22-12		02-22-12		02-22-12	
SCHEMATIC DESIGN SUBMISSION 11-21-11		11-21-11		11-21-11		11-21-11		11-21-11		11-21-11		11-21-11		11-21-11		11-21-11	
Revisions:		Date		Date		Date		Date		Date		Date		Date		Date	