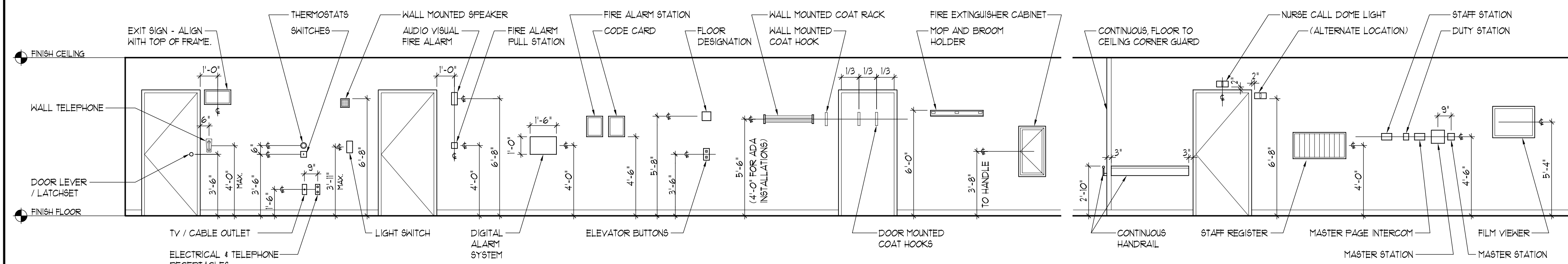
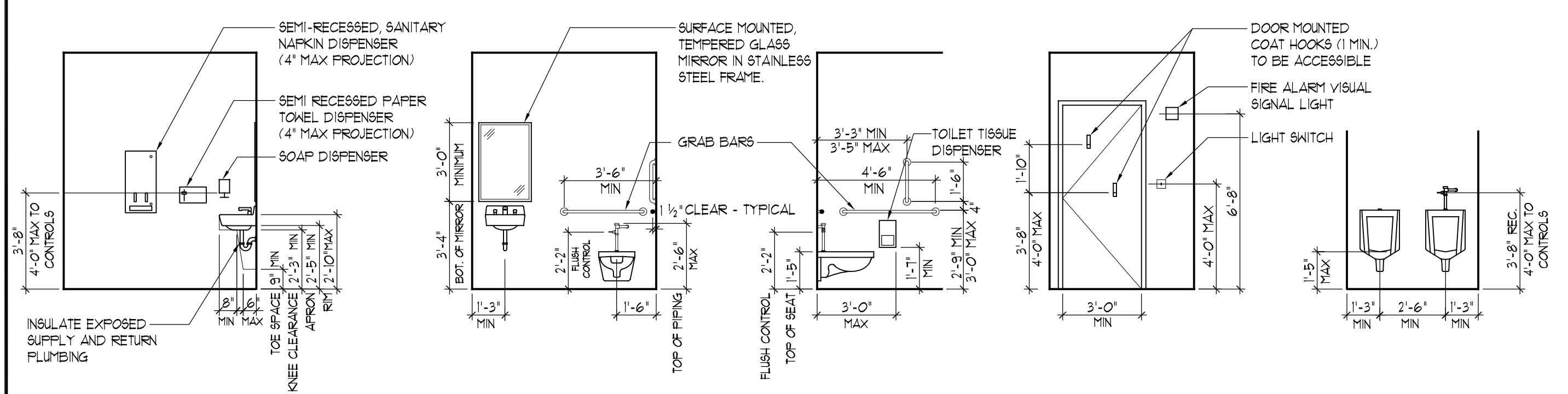


three inches = one foot
one and one half inches = one foot
one inch = one foot
three quarters inch = one foot
one half inch = one foot
three eighths inch = one foot
one quarter inch = one foot
one eighth inch = one foot



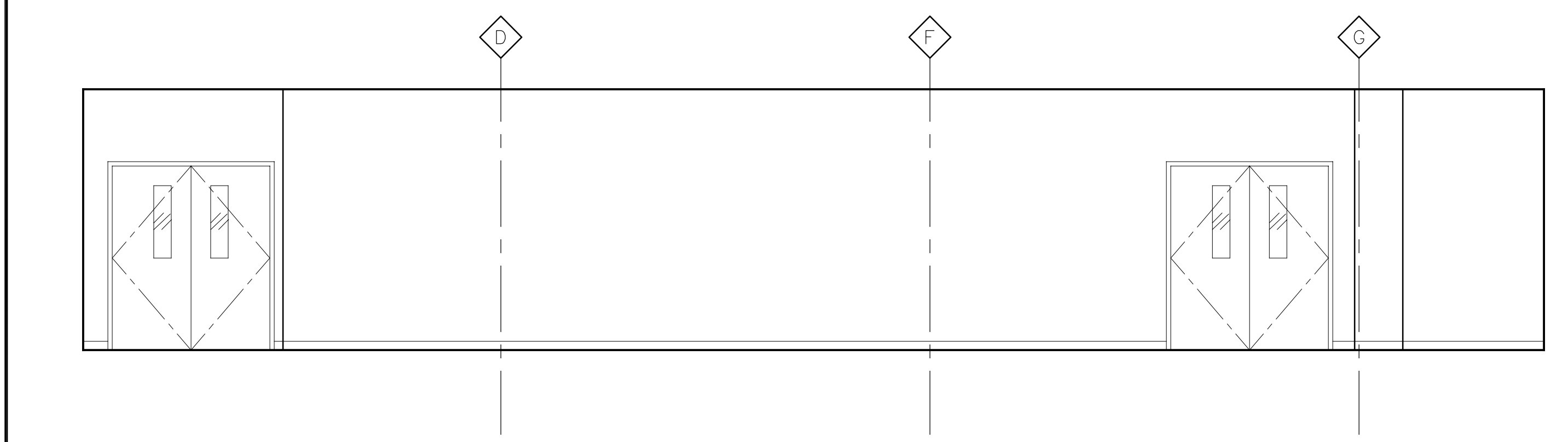
AI
AS80 **TYPICAL MOUNTING HEIGHTS** FOR REFERENCE ONLY - THIS DOES NOT INDICATE EQUIPMENT OR FIXTURES TO BE PROVIDED
PUBLIC SPACES

1/4"=1'-0"



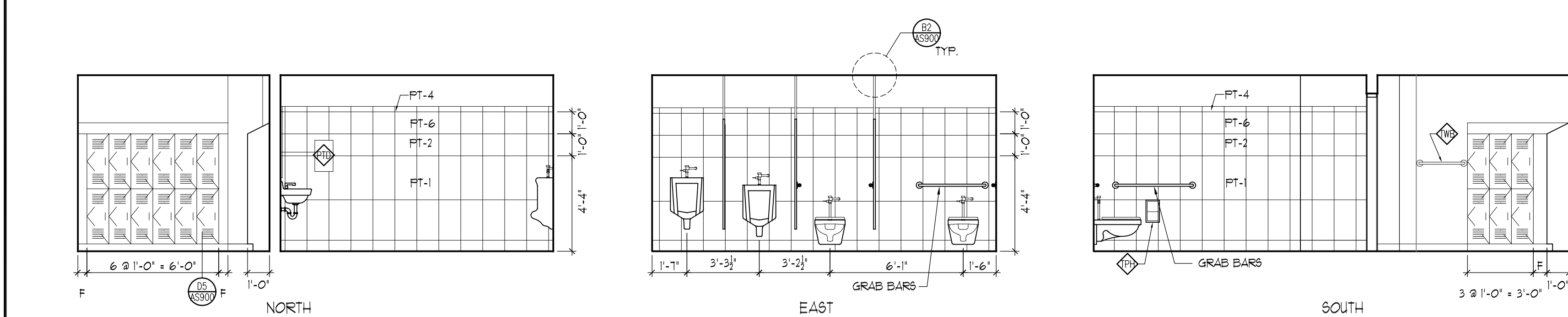
BI
AS80 **BARRIER-FREE - MOUNTING HEIGHTS**
TOILET ROOM

URINAL MOUNTING HEIGHTS 1/4"=1'-0"



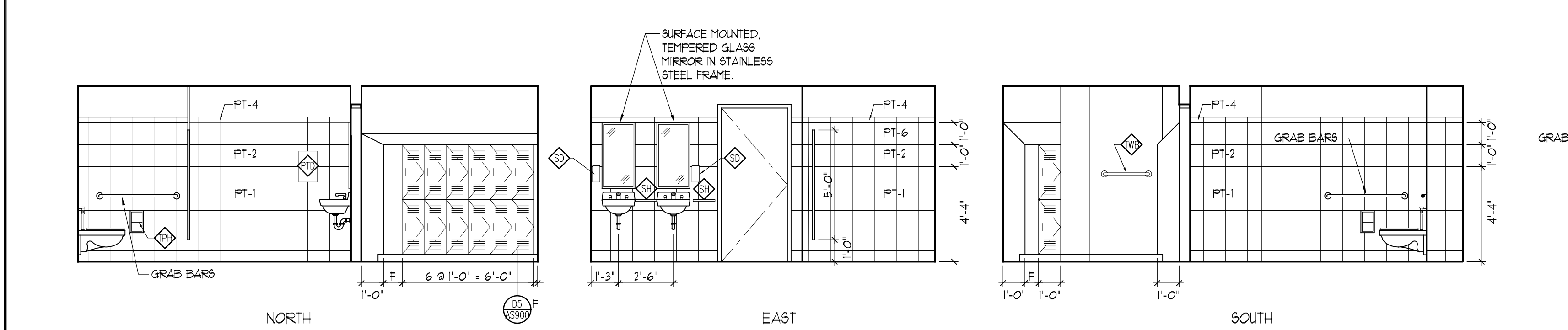
CI
AS80 **DINING ROOM - 101**
EAST

1/4"=1'-0"



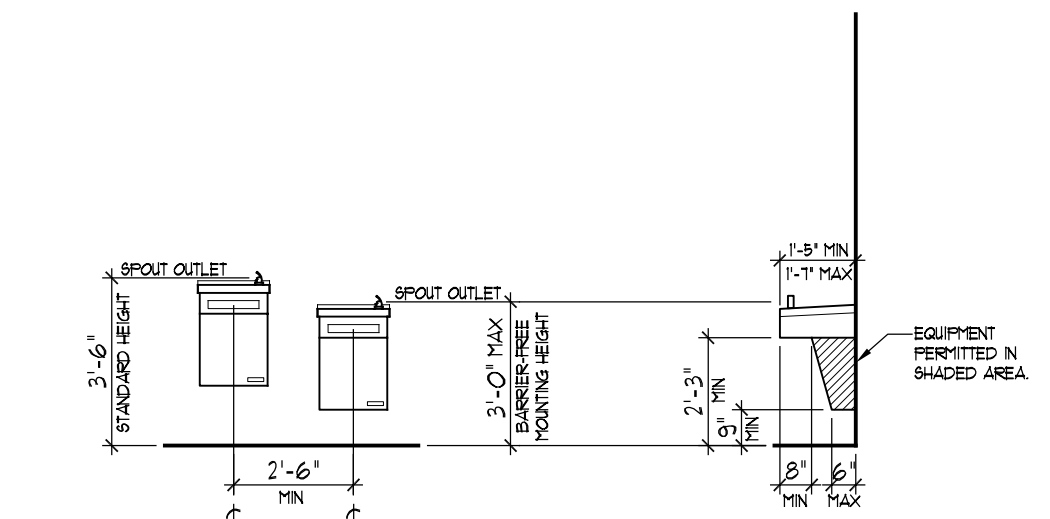
DI
AS80 **MALE LOCKER / RESTROOM - 101A**

1/4"=1'-0"

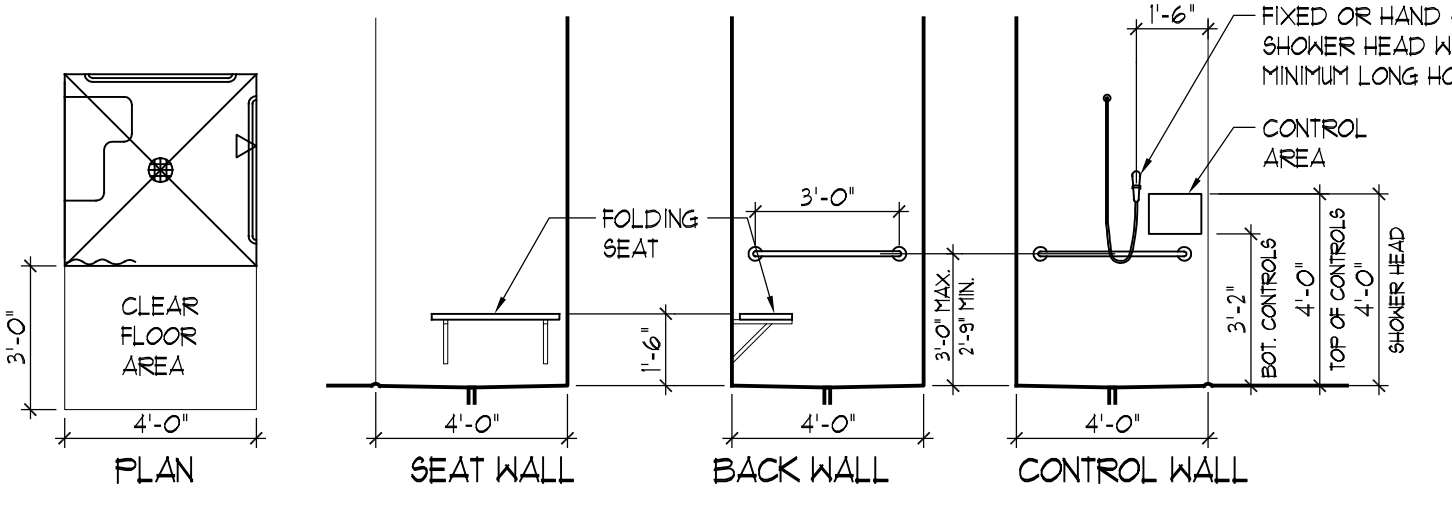


EI
AS80 **FEMALE LOCKER / RESTROOM - 101B**

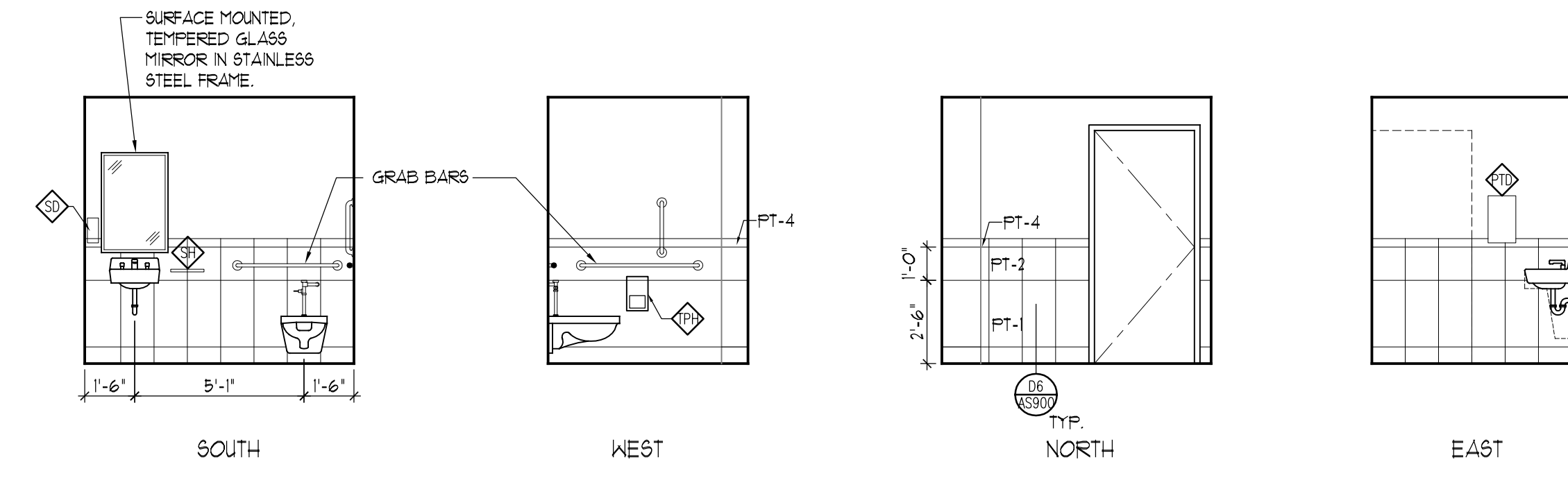
1/4"=1'-0"



A6
AS80 **BARRIER-FREE - MOUNTING HEIGHTS**
ELECTRIC WATER COOLER / DRINKING FOUNTAIN 1/4"=1'-0"

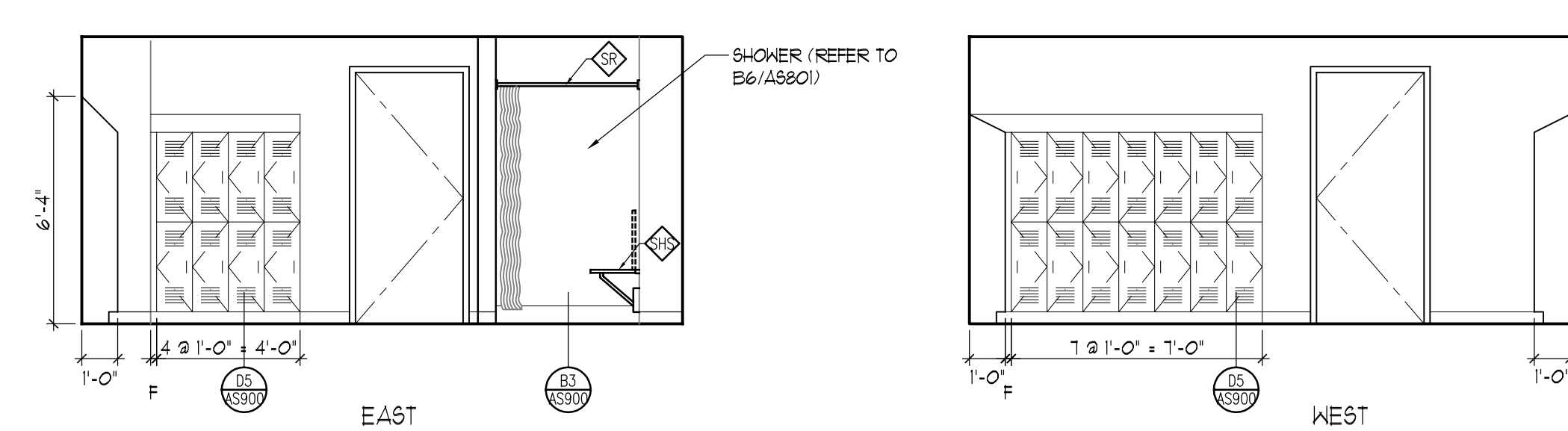


B6
AS80 **BARRIER-FREE - MOUNTING HEIGHTS**
4'-0" X 4'-0" SHOWER STALL 1/4"=1'-0"



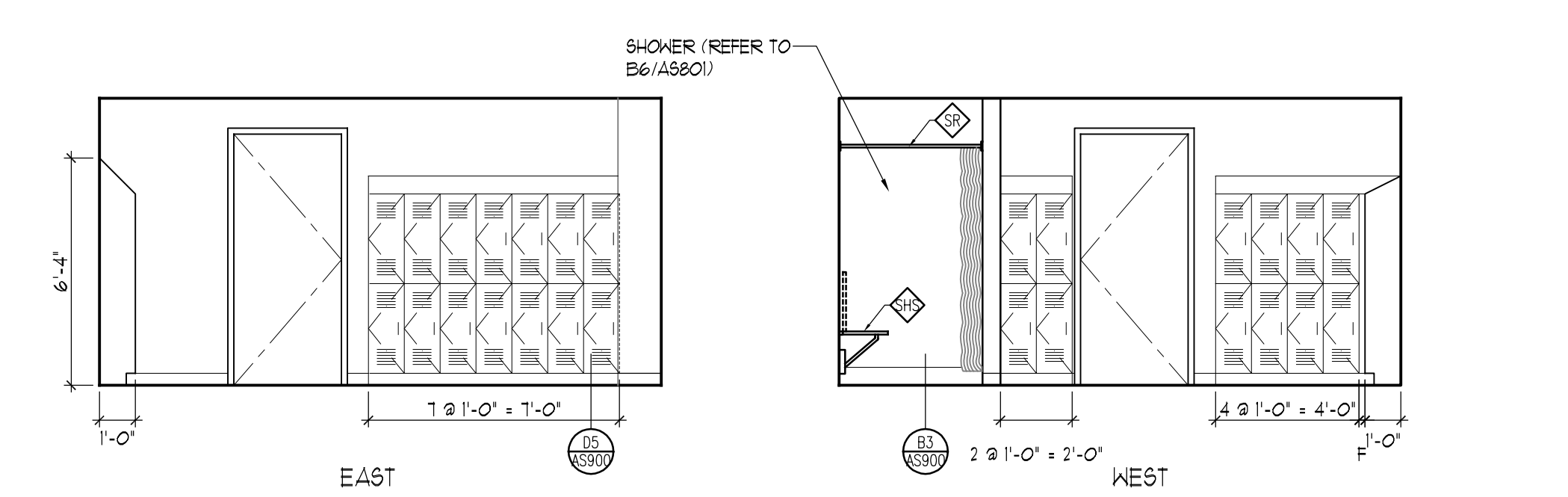
C6
AS80 **MEN'S TOILET ROOM - 105**
WOMEN'S TOILET ROOM 106 SIMILAR/OFFPOSITE

1/4"=1'-0"



D6
AS80 **MALE LOCKER / RESTROOM - 101A**

1/4"=1'-0"



E6
AS80 **FEMALE LOCKER / RESTROOM - 101B**

1/4"=1'-0"

FINAL BID DOCUMENTS		Federal Health Care Center U.S. Department of Veterans Affairs U.S. Department of Defense		Captain James A. Lovell Federal Health Care Center 3001 Green Bay Road North Chicago, IL, 60064		CONSULTANTS: ARNOLD & O'SHERIDAN Consulting Engineers CHEQUAMEGON BAY ENGINEERING, INC.		PROJECT LEADER: Plunkett Raysich Architects 11000 West Park Place • Milwaukee WI 53224 • Tel 414 359-3060 • Fax 414 359-3070 Intelligent Designs Inspired Results www.prarch.com PRA Job No. 110172-01		Drawing Title Interior Elevations		Project Title AE SCIP for Building 6 FHCC		Project Number 556-11-119		Office of Facilities Management	
90% CONSTRUCTION DOCUMENTS SUBMISSION 05-17-12		06-26-12								Approved: Project Director		Location North Chicago, IL		Building Number 6		Department of Veterans Affairs	
50% CONSTRUCTION DOCUMENTS SUBMISSION 04-06-12												Date June 26, 2012		Checked By: PRA			
35% DOCUMENTS SUBMISSION 02-22-12														Drawn By: RLS			
SCHEMATIC DESIGN SUBMISSION 11-21-11																Drawing Number AS-801	
Revisions:		Date															