

A
three inches = one foot

B
one and one half inches = one foot

C
one inch = one foot

D
three quarters inch = one foot

E
one half inch = one foot

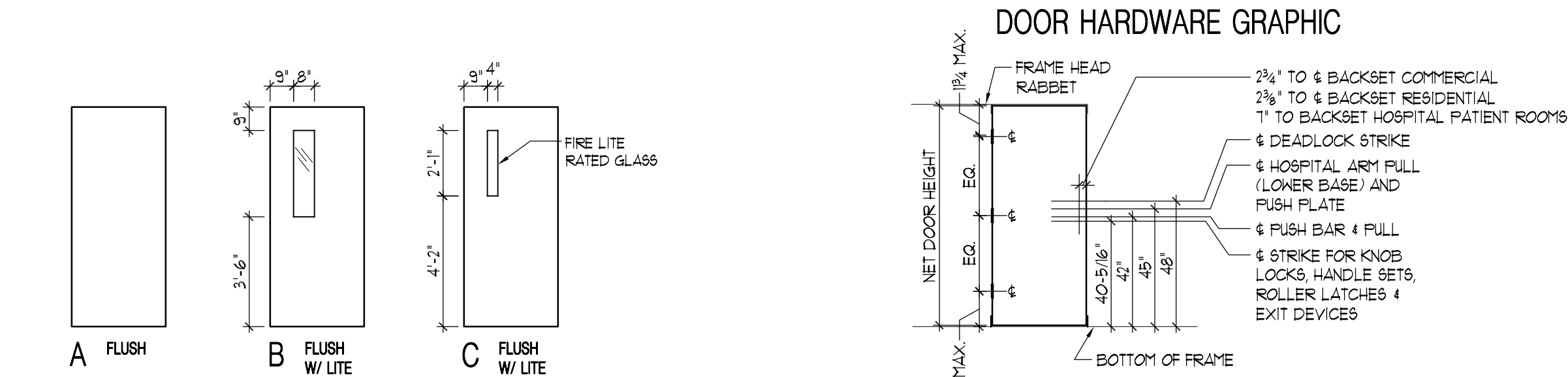
F
three eighths inch = one foot

G
one quarter inch = one foot

H
one eighth inch = one foot

DOOR HARDWARE SCHEDULE				
Set 1.0				
8	Hinge (NRP)	A5112 4-1/2" x 4-1/2"	US320	
1	Removable Mullion	Type 22 Steel	SP28	
1	Rim Exit Device	Type 1 x Lever 03 Function (knurled)	US260	
1	Cylinder	1.00E-72	US260	
2	Surface Closer	C02021 x Hvy Duty Stop	626	
1	Threshold	J3219	AL	
1	Gasketing (head)	R3E18 (sim. to Pemko 2891AS)		
2	Gasketing (jamb)	R3E18 (sim. to Pemko 303AS)		
1	Rain Guard	R01916		
2	Brush Sweep	R3M436		
2	Brush Astragal	R3A736		
Set 2.0				
3	Hinge (NRP)	A8112 4-1/2" x 4-1/2"	US260	
1	Rim Exit Device	Type 1 x Lever 03 Function	US260	
1	Cylinder	1.00E-72	626	
1	Surface Closer	C02021 x Stop	AL	
1	Gasketing	R0E154		
Set 3.0				
6	Hinge	A8111 5" x 4-1/2"	US260	
2	Push Plate	J301 6" x 16"	US320	
2	Surface Closer	C02021	626	
2	Kickplate	J102 10" x 1" LDW 4BE CSK	US320	
2	Wall Stop	L02101	US320	
Set 4.0				
6	Hinge	A8111 5" x 4-1/2"	US260	
1	Automatic Flush Bolt	Type 25	US260	
1	Dust Proof Strike	L04021	US260	
1	Storeroom Lock	F07	626	
1	Coordinator	Type 21	US28	
2	Surface Closer	C02021	626	
2	Kickplate	J102 10" x 1" LDW 4BE CSK	US320	
2	Electromagnetic Holder	C00011	689	
Set 5.0				
6	Hinge	A8112 4-1/2" x 4-1/2"	US260	
1	Automatic Flush Bolt	Type 25	US260	
1	Dust Proof Strike	L04021	US260	
1	Office Lock	F04	626	
1	Coordinator	Type 21	US28	
2	Mounting Bracket	As required	US28	
2	Surface Closer	C02021	626	
2	Kickplate	J102 10" x 1" LDW 4BE CSK	US320	
2	Electromagnetic Holder	C00011	689	
Set 6.0				
3	Hinge	A5112 4-1/2" x 4-1/2"	US320	
1	Push Plate	J301 6" x 16"	US320	
1	Pull Plate	J405 4" x 16"	US320	
1	Surface Closer	C02021 x Stop	AL	
1	Kickplate	J102 10" x 2" LDW 4BE CSK	US320	
1	Map Plate	J103 4" x 1" LDW 4BE CSK	US320	
Set 7.0				
3	Hinge	A5112 4-1/2" x 4-1/2"	US320	
1	Push Plate	J301 6" x 16"	US320	
1	Pull Plate	J405 4" x 16"	US320	
1	Surface Closer	C02011	AL	
1	Kickplate	J102 10" x 2" LDW 4BE CSK	US320	
1	Map Plate	J103 4" x 1" LDW 4BE CSK	US320	
1	Wall Stop	L02101	US320	
Set 8.0				
3	Hinge	A5112 4-1/2" x 4-1/2"	US320	
1	Privacy Set	F22	626	
1	Surface Closer	C02011	AL	
1	Kickplate	J102 10" x 2" LDW 4BE CSK	US320	
1	Map Plate	J103 4" x 1" LDW 4BE CSK	US320	
1	Wall Stop	L02101	US320	
Set 9.0				
3	Hinge	A8111 5" x 4-1/2"	US260	
1	Push Plate	J301 6" x 16"	AL	
1	Surface Closer	C02021	US320	
1	Kickplate	J102 10" x 1" LDW 4BE CSK	US320	
1	Wall Stop	L02101	US320	
Set 10.0				
3	Hinge	A5112 4-1/2" x 4-1/2"	US320	
1	Office Lock	F04	626	
1	Surface Closer	C02021	AL	
1	Kickplate	J102 10" x 2" LDW 4BE CSK	US320	
1	Electromagnetic Holder	C00011	689	
1	Gasketing	R0E154		
Set 11.0				
3	Hinge	A8112 4-1/2" x 4-1/2"	US260	
1	Office Lock	F04	626	
1	Wall Stop	L02101	US320	
Set 12.0				
3	Hinge	A8112 4-1/2" x 4-1/2"	US260	
1	Office Lock	F04	626	
1	Surface Overhead Stop	C05542	652	
Set 13.0				
3	Hinge	A8111 5" x 4-1/2"	US260	
1	Office Lock	F04	626	
1	Wall Stop	L02101	US320	
Set 14.0				
6	Hinge	A5112 4-1/2" x 4-1/2"	US320	
1	Dust Proof Strike	L04021	US260	
2	Manual Flush Bolt	L04251	US260	
2	Office Lock	F04	626	
2	Surface Overhead Stop	C02541	630	
Set 15.0				
3	Hinge	A8111 5" x 4-1/2"	US260	
1	Office Lock	4517A 15J	626	
1	Surface Closer	C02021	AL	
1	Wall Stop	L02101	US320	
1	Gasketing	R0E154		
Set 16.0				
3	Hinge	A8111 5" x 4-1/2" NRP	US260	
1	Storeroom Lock	F07	626	
1	Surface Closer	C02021 x Stop	AL	
1	Gasketing	R0E154		
Set 17.0				
All hardware by double-acting door manufacturer.				

WINDOW SCHEDULE							
Project: AE SCIP for Building 6 – James Lovell FHCC				Project No. 556-11-119			
NO.	TYPE	Size (W x H) M.O.	Mat'l	Finish	Glass	Screen	
A	METAL DOUBLE-HUNG	3'-8 7/8" x 5'-11 1/2"	STL	MATCH EXTG	MATCH EXTG	MATCH EXTG	
B	METAL DOUBLE-HUNG	3'-8 7/8" x 5'-3 1/4"	STL	MATCH EXTG	MATCH EXTG	MATCH EXTG	
C	METAL DOUBLE-HUNG	3'-8 7/8" x 4'-7"	STL	MATCH EXTG	MATCH EXTG	MATCH EXTG	
D	METAL DOUBLE-HUNG	2'-4" x 5'-11 1/2"	STL	MATCH EXTG	MATCH EXTG	MATCH EXTG	
E	SINGLE PANE	3'-8 7/8" x 3'-2"	STL	MATCH EXTG	MATCH EXTG	MATCH EXTG	
NOTES: SEE SPEC FOR GLASS							

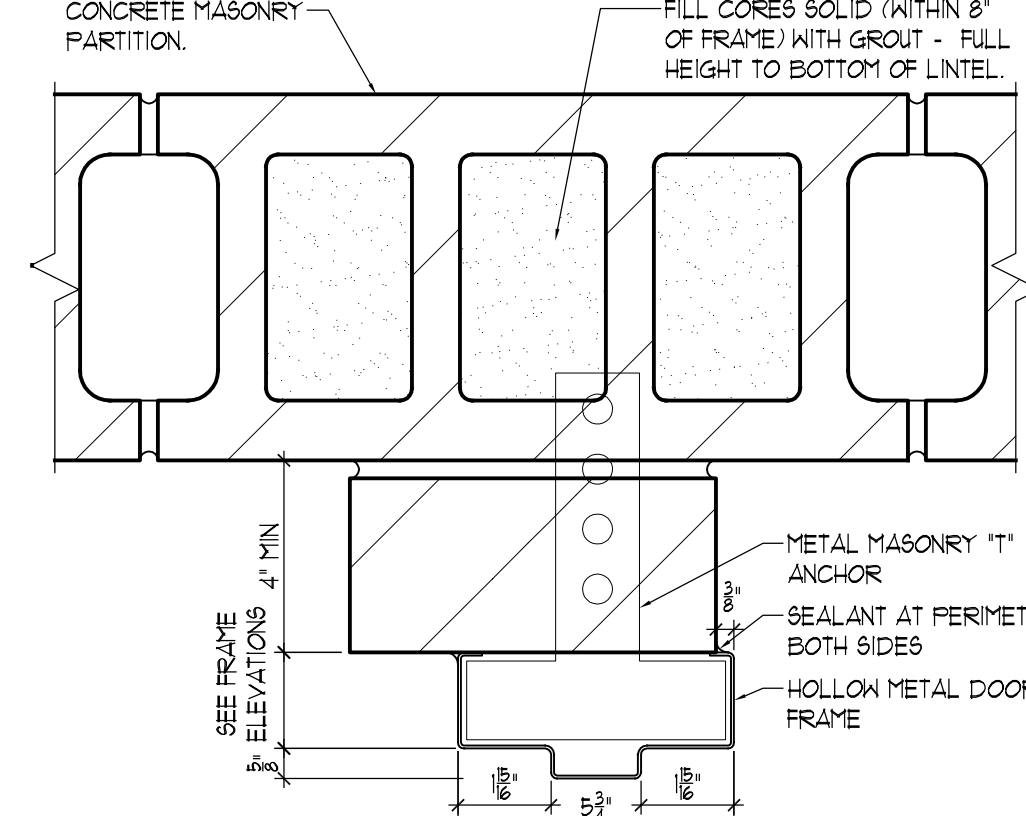
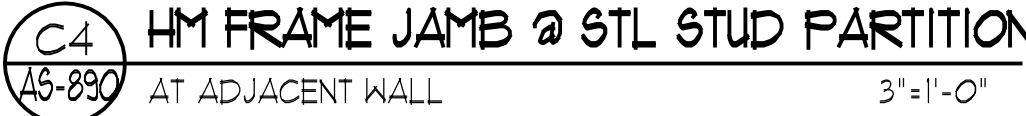
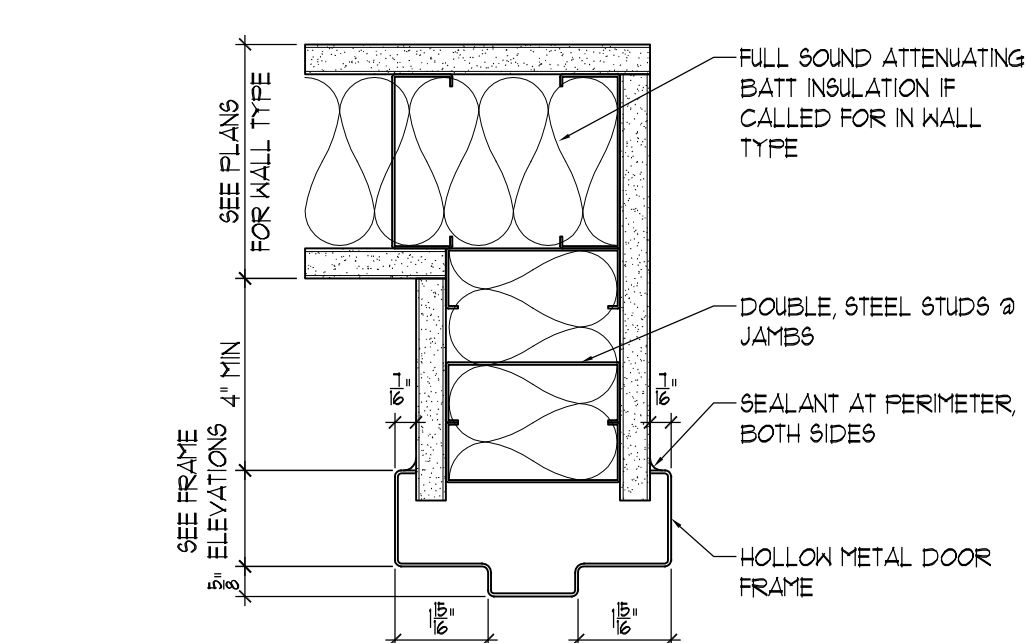
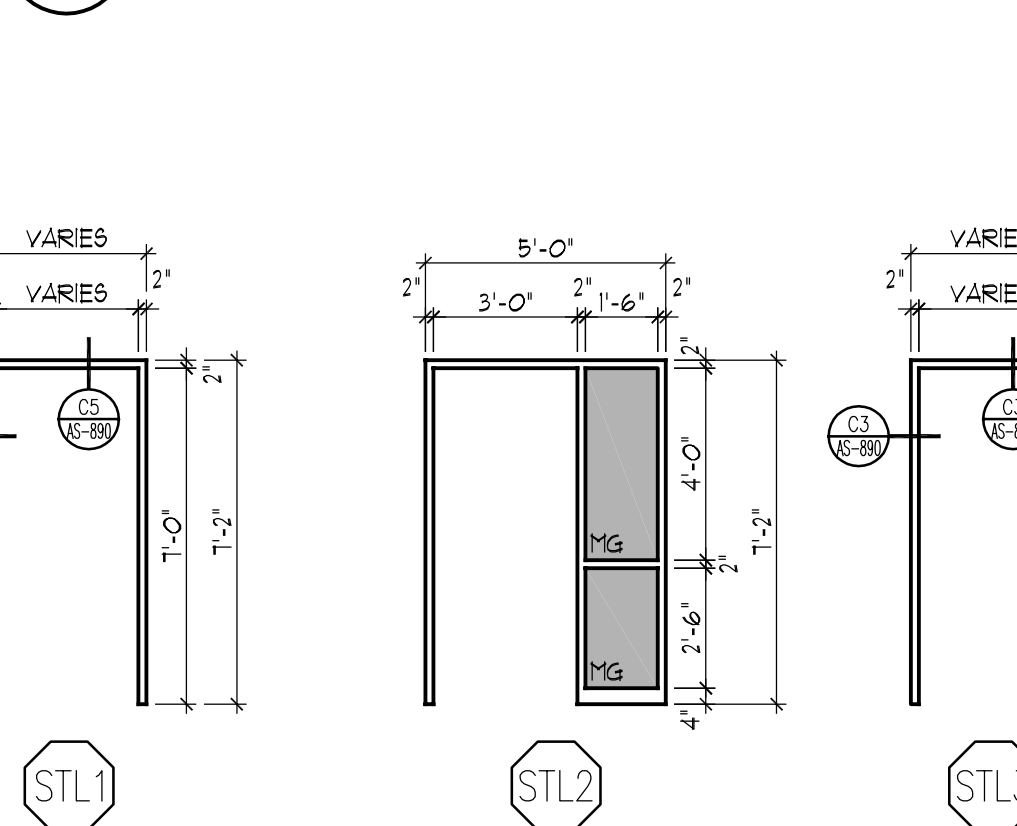
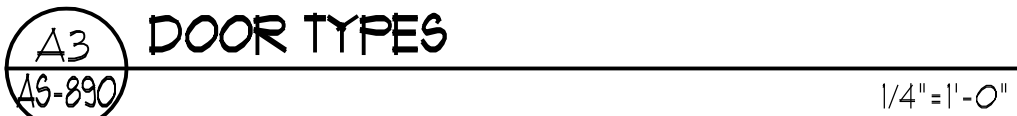


DOOR LITE GLAZING SCHEDULE (Refer to Section 08800 - Glazing)

MG Monolithic Float Glass
MGT Monolithic Float Glass - Fully Tempered
FG Fire-Rated Safety Glass
FG Insulating Glass Unit
FG Tempered Glass

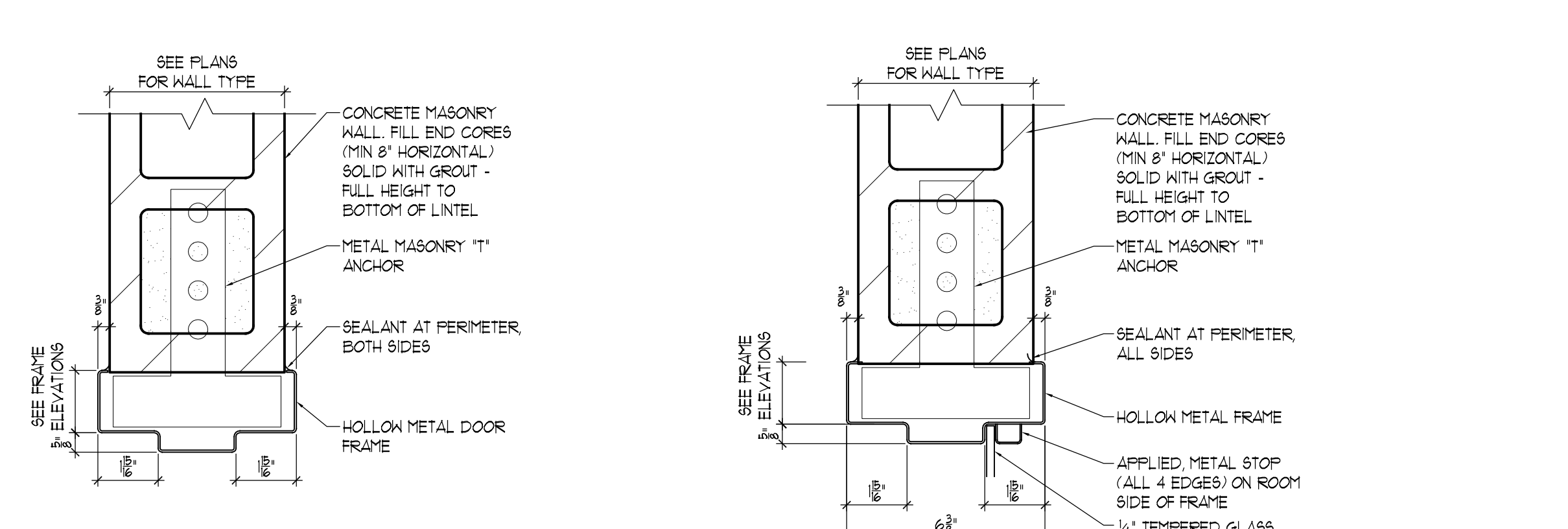
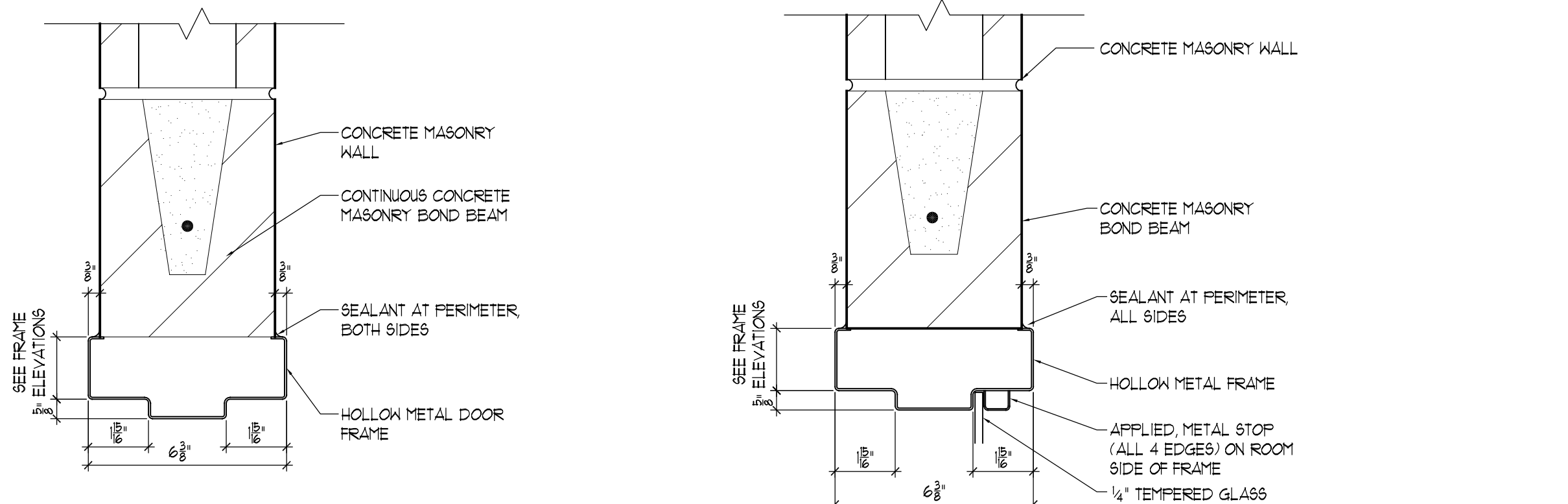
GENERAL DOOR NOTES

- Door number is identical to number of room in which door occurs. In cases of multiple doors in one room, suffixes are added to door number.
- All doors are 1-3/4" thick, unless noted otherwise.
- All doors receiving panic hardware - lites to be 3'-6" AFF. minimum for hardware clearance below lite.



DOOR SCHEDULE											
Project: AE SCIP for Building 6 – James Lovell FHCC						Project No. 556-11-119					
DOOR NO.	ROOM NO.	ROOM NAME	Size (W x H)	Type	Door	Finish	Glass	Mat'l	Frame	Hardware	As'y Rating
007C.1	007C	ELECTRICAL ROOM	3'-0" x 7'-0"	A	STL	PA	—	STL1	PA	1	45 MIN
007C.2	007C	ELECTRICAL ROOM	3'-0" x 7'-0"	A	STL	PA	—	STL1	PA	2	45 MIN
101A.1	101A	MALE LOCKER / RESTROOM	3'-0" x 7'-0"	A	WD	STN	—	STL1	PA	6	—
101A.2	101A	MALE LOCKER / RESTROOM	3'-0" x 7'-0"	A	WD	STN	—	STL1	PA	7	—
101B.1	101B	FEMALE LOCKER / RESTROOM	3'-0" x 7'-0"	A	WD	STN	—	STL1	PA	6	—
101B.2	101B	FEMALE LOCKER / RESTROOM	3'-0" x 7'-0"	A	WD	STN	—	STL1	PA	7	—
105	105	MEN'S TOILET	3'-0" x 7'-0"	A	WD	STN	—	STL1	PA	8	—
106	106	WOMEN'S TOILET	3'-0" x 7'-0"	A	WD	STN	—	STL1	PA	8	—
107	107	DINING ROOM	(2) 3'-0" x 7'-0"	B	RBR	—	MG	STL3	PA	17	—
107B.1	107B	SERVING LINE	(2) 3'-0" x 7'-0"	B	RBR	—	MG	STL3	PA	17	—
107B.2	107B	SERVING LINE	3'-8" x 7'-0"	B	WD	STN	MG	STL1	PA	13	—
107A	107A	COOK LINE	3'-0" x 7'-0"	B	WD	STN	MG	STL1	PA	10	—
110	110	OFFICE SPACE	3'-0" x 7'-0"	B	WD	STN	MG	STL2	PA	11	—
110A	110A	PRODUCTION OFFICE	3'-0" x 7'-0"	B	WD	STN	MG	STL1	PA	12	—
110C	110C	COOK SUPERVISOR OFFICE	3'-0" x 7'-0"	B	WD	STN	MG	STL1	PA	11	—
110D	110D	STORAGE	3'-0" x 7'-0"	A	WD	STN	—	STL1	PA	15	—
112E.1	112E	INGREDIENT CONTROL ROOM	3'-6" x 7'-0"	B	STL	PA	MG	STL1	PA	13	—
112E.2	112E	INGREDIENT CONTROL ROOM	(2) 3'-0" x 7'-0"	B	STL	PA	MG	STL1	PA	14	—
114	114	POTENTIAL OFFICE SPACE	3'-8" x 7'-0"	C	STL	PA	FG	STL1	PA	15	45 MIN
114C	114C	STORAGE	3'-6" x 7'-0"	A	STL	PA	—	STL1	PA	16	45 MIN
C101	C101	CORRIDOR	(2) 3'-6" x 7'-0"	B	WD	STN	MG	STL1	PA	3	—
C102	C102	CORRIDOR	3'-6" x 7'-0"	B	WD	STN	MG	STL1	PA	9	—
C103	C103	CORRIDOR	(2) 2'-11" x 7'-0"	B	WD	STN	MG	STL1	PA	5	—
C113A	C113A	CART STORAGE	(2'-0" 3'-0" x 7'-0"	B	WD	STN	MG	STL1	PA	4	—
T1	107	DINING	3'-0" x 7'-0"	A	WD	STN	—	STL 3	PA	9	45 MIN
T2	107	DINING	3'-0" x 7'-0"	A	WD	STN	—	STL 3	PA	9	45 MIN
T3	C100	CORRIDOR	3'-0" x 7'-0"	A	WD	STN	—	STL 3	PA	9	45 MIN
T4	C100	CORRIDOR	3'-0" x 7'-0"	A	WD	STN	—	STL 3	PA	9	45 MIN
T5	107A	COOK LINE	3'-0" x 7'-0"	A	WD	STN	—	STL 3	PA	9	45 MIN
T6	112	KITCHEN	3'-0" x 7'-0"	A	WD	STN	—	STL 3	PA	9	45 MIN
T7	113	CART STORAGE	3'-0" x 7'-0"	A	WD	STN	—	STL 3	PA	9	45 MIN
T8	100	STORAGE	3'-0" x 7'-0"	A	WD	STN	—	STL 3	PA	9	45 MIN
NOTES: 1 EXTERIOR INSULATED STEEL DOOR 2 180 DEGREE DOOR SWING 3 MAGNETIC HOLD OPENS AND LATCH 4 FLEXIBLE TRAFFIC DOOR 5 TEMPORARY PHASING DOOR PAINTED YELLOW											

GLASS TYPES:
FG - FIRE-RATED SAFETY GLAZING
IG - INSULATING GLASS UNIT
MGT - MONOLITHIC FLOAT GLASS (FULLY TEMPERED)



FINAL BID DOCUMENTS

06-26-12

90% CONSTRUCTION DOCUMENTS SUBMISSION

05-17-12

50% CONSTRUCTION DOCUMENTS SUBMISSION

04-06-12

35% DOCUMENTS SUBMISSION

02-22-12

SCHEMATIC DESIGN SUBMISSION

11-21-11

Revisions:

Date

Federal Health Care Center

U.S. Department of Veterans Affairs | U.S. Department of Defense

Captain James A. Lovell

Federal Health Care Center

3001 Green Bay Road

North Chicago, IL, 60064

CONSULTANTS:

ARNOLD & O'SHERIDAN
Consulting Engineers

CHEQUAMEGON BAY ENGINEERING, INC.

MACKESEY AND ASSOCIATES, LLC

PROJECT LEADER:

Plunkett Raysich Architects
11000 West Park Place • Milwaukee WI 53224 • Tel 414 359-3060 • Fax 414 359-3070
Intelligent Designs **Inspired Results**
www.prarch.com
PRA Job No. 110172-01

Drawing Title

Door Schedule, Door Types and Door Details

Approved: Project Director

Project Title

AE SCIP for Building 6 FHCC

Location

North Chicago, IL

Date

June 26, 2012

Checked By:

PRA

Drawn By:

RLS

Project Number

556-11-119

Building Number

6

Drawing Number

AS-890

Office of Facilities Management

Department of Veterans Affairs

VA FORM 08-6231, OCT 1978 1 2 3 4 5 6 7 8 9