



EXPIRES 6/30/14

2

Room Type	Room #	Load Control Type					Control Device Type				System Control Capabilities / Integration																																																																																																																																																																																																																																																																																																																																																																																																																																																																																																																																																																																																																																																																																																																																																																																																																																																																																																																																																																																																																																																																																																																																																																																																																																																																																																																																																																																																																																																																																																																												
		I/O Module per zone (group dimming)	I/O Module per zone (group switching)	I/O Module : 0-10V Non proprietary dimming ballast	Accessory Control Module with power pack (receptacle control)	Accessory Control Module (motorized ball valve serving faucet)	Panel based relay	Occupancy sensor	Lighting Control Software	Low voltage override wall controller (weatherproof switch)	Low voltage override wall controller: multi zone	Time Clock Scheduling (on/off)	After hours override																																																																																																																																																																																																																																																																																																																																																																																																																																																																																																																																																																																																																																																																																																																																																																																																																																																																																																																																																																																																																																																																																																																																																																																																																																																																																																																																																																																																																																																																																																																										
Public Vestibule	A101	X							X	X			X																																																																																																																																																																																																																																																																																																																																																																																																																																																																																																																																																																																																																																																																																																																																																																																																																																																																																																																																																																																																																																																																																																																																																																																																																																																																																																																																																																																																																																																																																																																										</

NOTES: 1. CONTRACTOR TO VERIFY ALL QUANTITIES OF CONTROL MODULES.

3

ENCELIUM - SEQUENCE OF OPERATIONS MATRIX

SCALE: NONE

Revision Title

Addendum 2

Revision Date

17 AUG 12

Drawing Reference

ES-105.1

Sketch Number

SK-ES08

SEISMIC REPLACEMENT BLDG 2

PHASE 1 MINOR

ACUTE PSYCHIATRIC WARD, B86

ROSEBURG, OREGON

BALZHISER & HUBBARD ENGINEERS

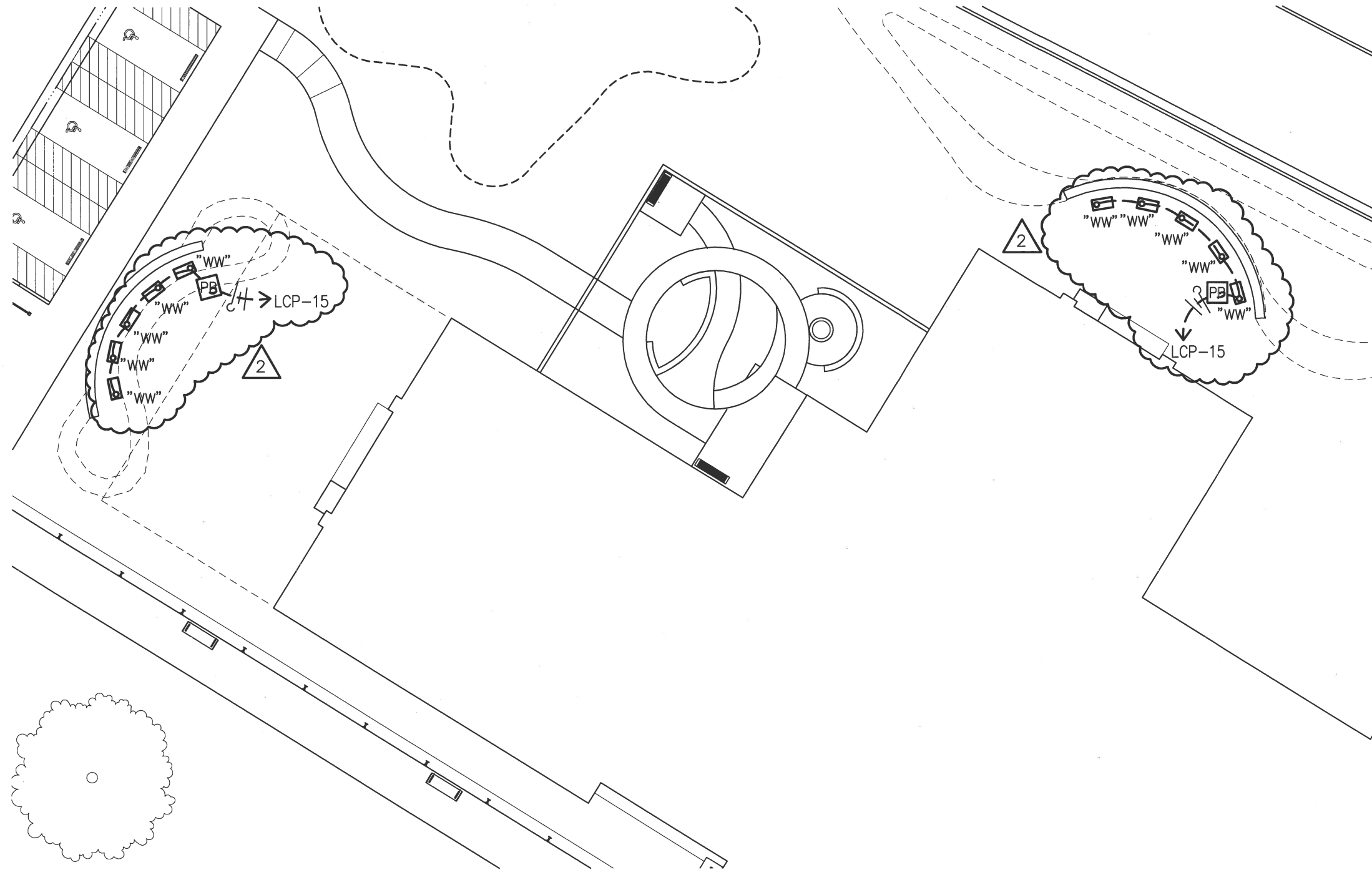
MECHANICAL
ELECTRICAL
CIVIL
SURVEYORS

100 WEST 13TH AVENUE
EUGENE, OR 97401
P: 541-686-8478
F: 541-345-5303

2100-031-10es-105.1.dwg

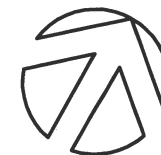
VA Project Number

653-322



SITE PLAN - ELECTRICAL

SCALE: 1"=20'



BALZHISER & HUBBARD ENGINEERS

MECHANICAL
ELECTRICAL
CIVIL
SURVEYORS
100 WEST 13TH AVENUE
EUGENE, OR 97401
P: 541-686-8478
F: 541-345-5303
2100-031-10es-001.dwg

VA Project Number

653-322

SEISMIC REPLACEMENT BLDG 2
PHASE 1 MINOR
ACUTE PSYCHIATRIC WARD, B86
ROSEBURG, OREGON

Revision Title

Addendum 2

Revision Date

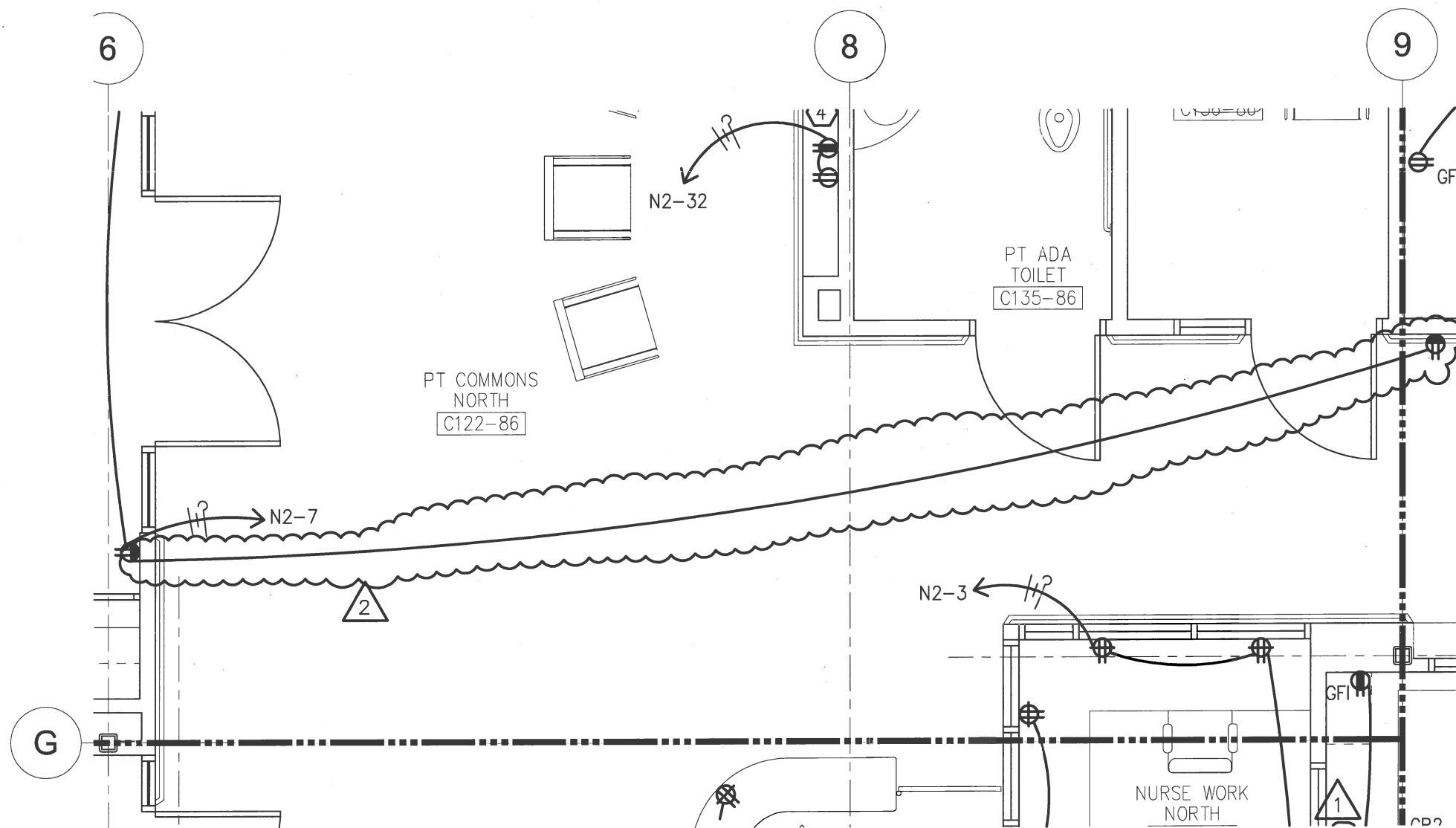
17 AUG 12

Drawing Reference

ES-001

Sketch Number

SK-ES09



1

FLOOR PLAN NORTH WING - POWER

SCALE: 1/4"=1'-0"



BALZHISER & HUBBARD ENGINEERS

MECHANICAL
ELECTRICAL
CIVIL
SURVEYORS
100 WEST 13TH AVENUE
EUGENE, OR 97401
P: 541-686-8478
F: 541-345-5303
2100-031-10es-101.1_4.dwg

VA Project Number

653-322

SEISMIC REPLACEMENT BLDG 2
PHASE 1 MINOR
ACUTE PSYCHIATRIC WARD, B86
ROSEBURG, OREGON

Revision Title

Addendum 2

Revision Date

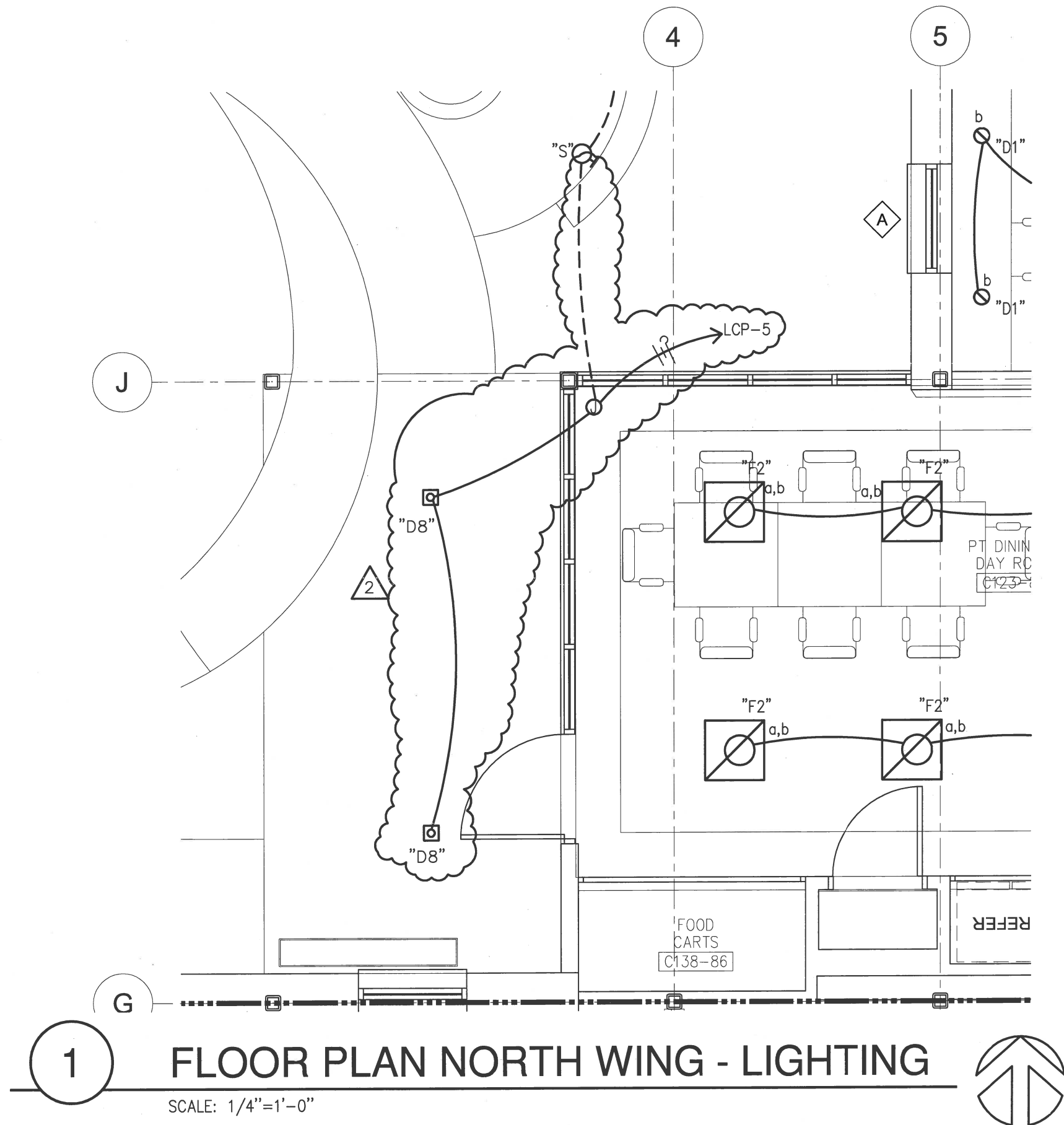
17 AUG 12

Drawing Reference

ES101.2

Sketch Number

SK-ES10



BALZHISER & HUBBARD ENGINEERS

MECHANICAL
ELECTRICAL
CIVIL
SURVEYORS
100 WEST 13TH AVENUE
EUGENE, OR 97401
P: 541-686-8478
F: 541-345-5303
2100-031-10es-102.1_4.dwg

VA Project Number

653-322

SEISMIC REPLACEMENT BLDG 2
PHASE 1 MINOR
ACUTE PSYCHIATRIC WARD, B86
ROSEBURG, OREGON

Revision Title

Addendum 2

Revision Date

17 AUG 12

Drawing Reference

ES102.2

Sketch Number

SK-ES11

LIGHTING CONTROL PANEL SCHEDULE

ID: LCP Location: Electrical Room E123
Voltage: 120 Supply Circuit: LS1 - 9 Normal Interruption Circuit: N1 - 24

Relay	Panelboard	Circuit	Control	Room / Number / Zone	Load (VA)	Notes	Relay	Panelboard	Circuit	Control	Room / Number / Zone	Load (VA)	Notes
EMERGENCY													
1	LS1	28	TC / OS	HALL & VESTIBULE	460	1,5	2	LS1	16	TC / \$ _{LV}	LOADING DOCK	200	2,3,7
3	LS1	28	TC / OS	HALL & VESTIBULE	460	1,5	4						8
5	LS1	14	TC	EXT/SECURE CT.	150	1,2,3	6						8
7						8	8						8
9						8	10						8
11						8	12						8
NORMAL													
13	N1	30	TC	MECH YARD	470	7,2,3	14						8
15	N1	30	TC	LANDSCAPE LIGHTING	90	7	16						8
KEY: TC = TIME CLOCK / OS = OCCUPANCY SENSOR / \$ _{LV} = LOW VOLTAGE SWITCH / PC = PHOTOCELL													

GENERAL NOTES:

1. UPON LOSS OF NORMAL POWER, ALL LIGHTS IDENTIFIED AS EMERGENCY SHALL AUTOMATICALLY TURN ON.

NOTES:

1. LIGHTS ON AT 6:30AM, OFF AT 6:30PM, VERIFY SCHEDULE WITH OWNER.
2. RELAY OPERATED BY LOCAL CONTROL STATIONS AFTER OCCUPIED HOURS.
3. SWEEP LIGHTS OFF AT 2 HOUR INTERVALS AFTER SCHEDULED OCCUPIED HOURS.
4. OPERATION OF ANY LOCAL CONTROL STATION AFTER HOURS SHALL TURN RELAY ON.
5. RELAY OPERATED BY OCCUPANCY SENSOR AFTER NORMALLY OCCUPIED HOURS.
6. RELAY OPERATED BY OCCUPANCY SENSOR DURING NORMALLY OCCUPIED HOURS.
7. LIGHTS ON AT DUSK, OFF AT DAWN.
8. SPARE RELAY



BALZHISER & HUBBARD ENGINEERS

MECHANICAL
ELECTRICAL
CIVIL
SURVEYORS
100 WEST 13TH AVENUE
EUGENE, OR 97401
P: 541-686-8478
F: 541-345-5303
2100-031-10es-104.1.dwg

VA Project Number

653-322

SEISMIC REPLACEMENT BLDG 2
PHASE 1 MINOR
ACUTE PSYCHIATRIC WARD, B86
ROSEBURG, OREGON

Revision Title

Addendum 2

Revision Date

17 AUG 12

Drawing Reference

ES-104.1

Sketch Number

SK-ES12