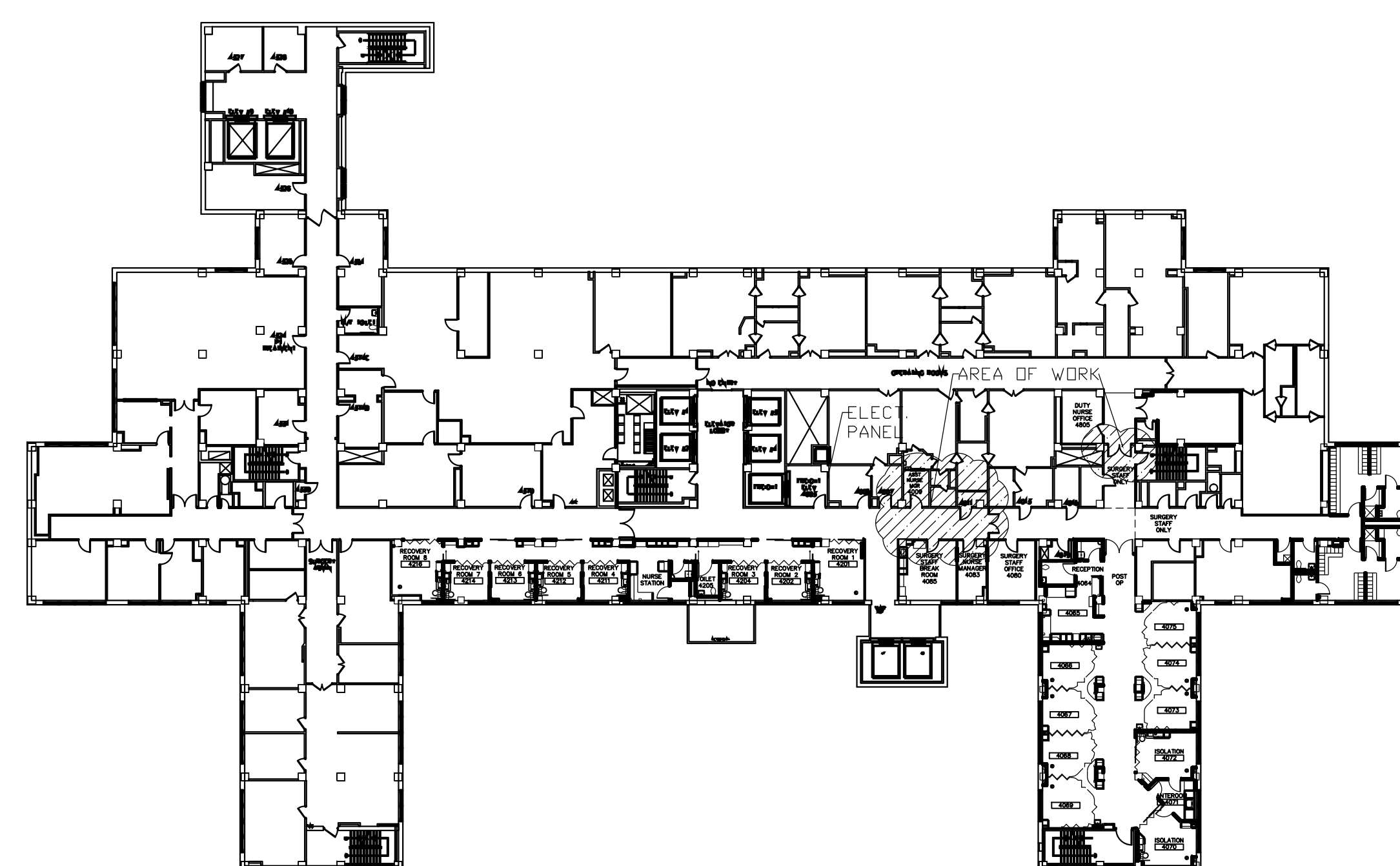
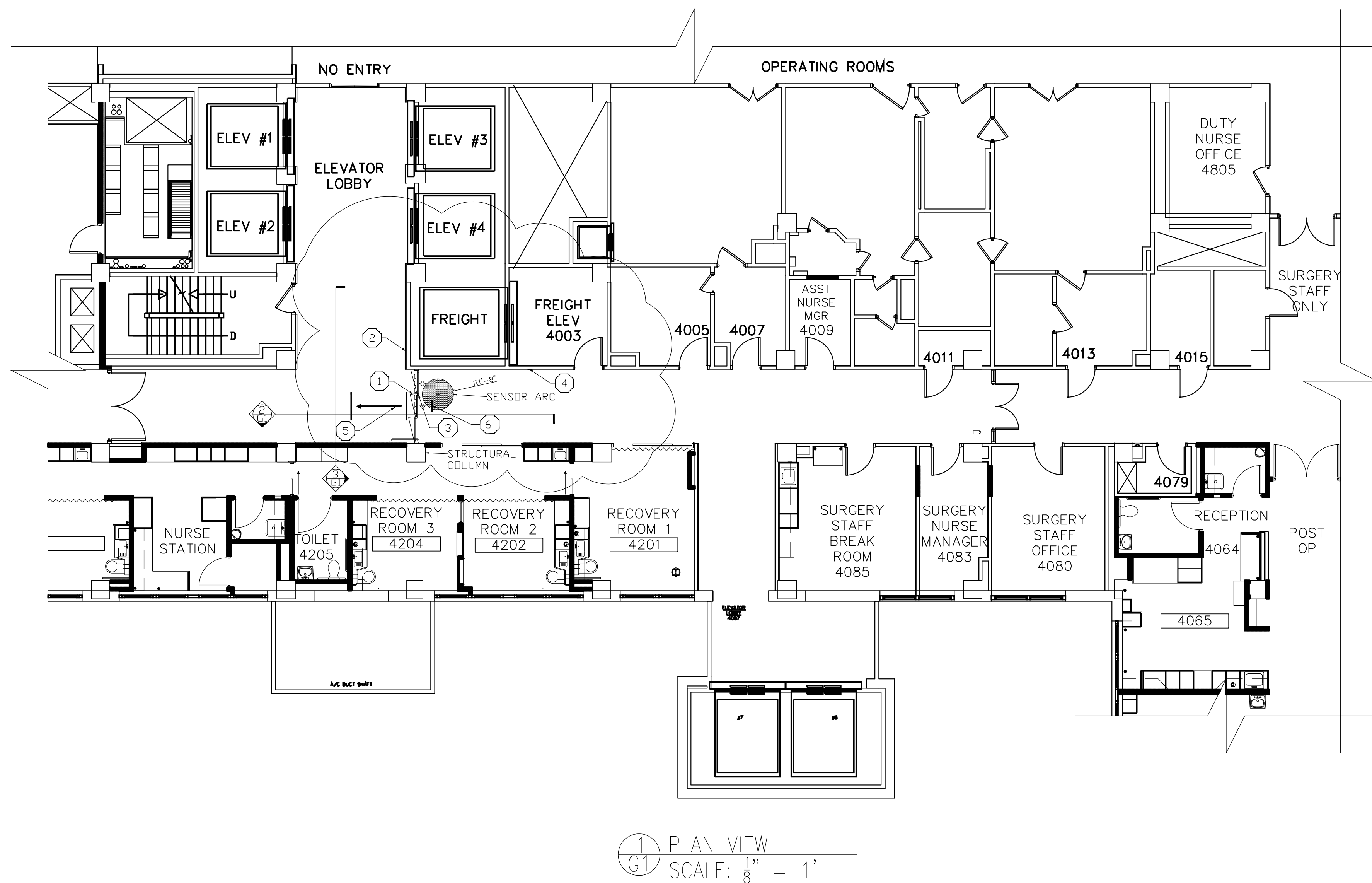
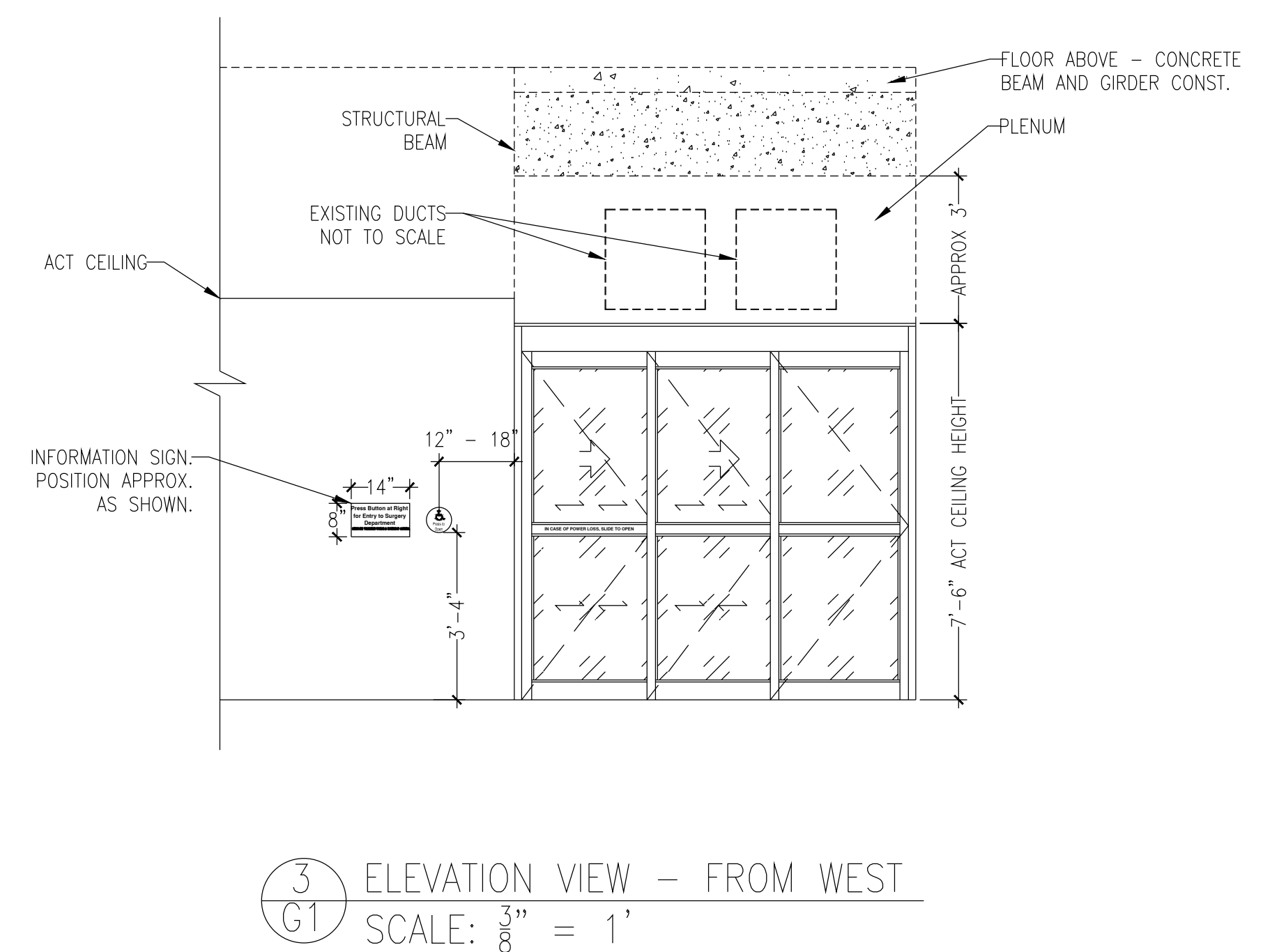


- DRAWING NOTES:**
1. NEW TELESCOPING SINGLE-PART SLIDING DOOR (SX-SX-SO). SEE DOOR DETAILS (4-G1), SCOPE OF WORK AND SPECIFICATIONS. (NOTE - DOOR SHOWN IN SO-SX-SX CONFIGURATION IN 4-G1)
 2. INSTALL 6" ADA PUSH PLATE, THIS WALL. SEE DRAWING 3.
 3. INSTALL SINGLE MOTION SENSOR CENTERED ABOVE SLIDING PANELS (MAY BE SURFACE MOUNTED OR INTEGRAL TO THE DOOR OPERATOR CASING). DETECTION ARCS EXTEND 43" - 47" FROM FACE OF FRAME.
 4. INSTALL NEW 6" Ø ROUND ADA PUSH PLATE THIS WALL, BOTTOM OF PUSH PLATE SHALL BE 40" ABOVE FLOOR LEVEL, AND PLACED 10" - 12" LATERAL DISTANCE FROM NEW DOOR.
 5. RELOCATE CEILING MOUNTED "MAIN ELEVATORS" SIGN SO THAT IT IS CENTERED ON BOTH THE MAIN CORRIDOR AND THE ELEVATOR LOBBY.
 6. INSTALL ILLUMINATED "EXIT" SIGN PER SPECIFICATIONS.



2 ELEVATION VIEW - FROM NORTH
G1 SCALE: $\frac{3}{8}'' = 1'$



1. SCALE SHEET SIZE: 30"x 42"

2. DRAWING REVISED JULY 27, 2012. DRAWING SHEET G1 DATED JULY 20, 2012 IS RESCINDED.

Drawing Title
SURGERY DOOR INSTALLATION - 1

Project Coordinator:
Chaz Williamson, Staff Engineer
Omaha VAMC, 4101 W. Woolworth Ave, Omaha, NE 68105
Phone: 402-995-4387 (o), 402-681-7462 (c)
E-mail: chaz.williamson2@va.gov

Project Title CORRECT LIFE SAFETY CODE DEFICIENCIES PH 3		
Location OMAHA VAMC		
Date JUL 20 2012	Checked CLM	Drawn CLM

Project Number 636-12-104
Building Number ONE
Drawing Number G1

 Department of
Mathematics