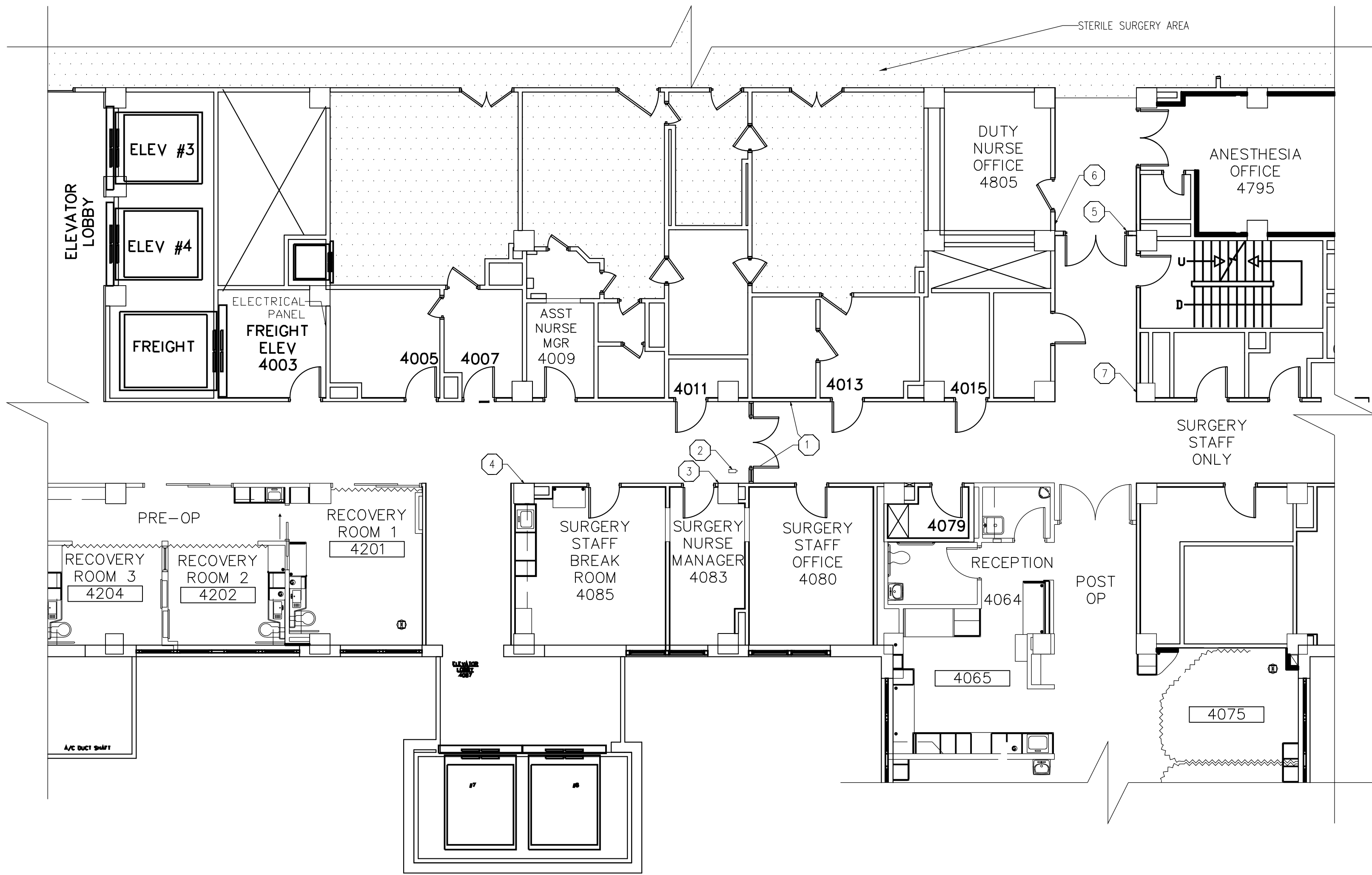
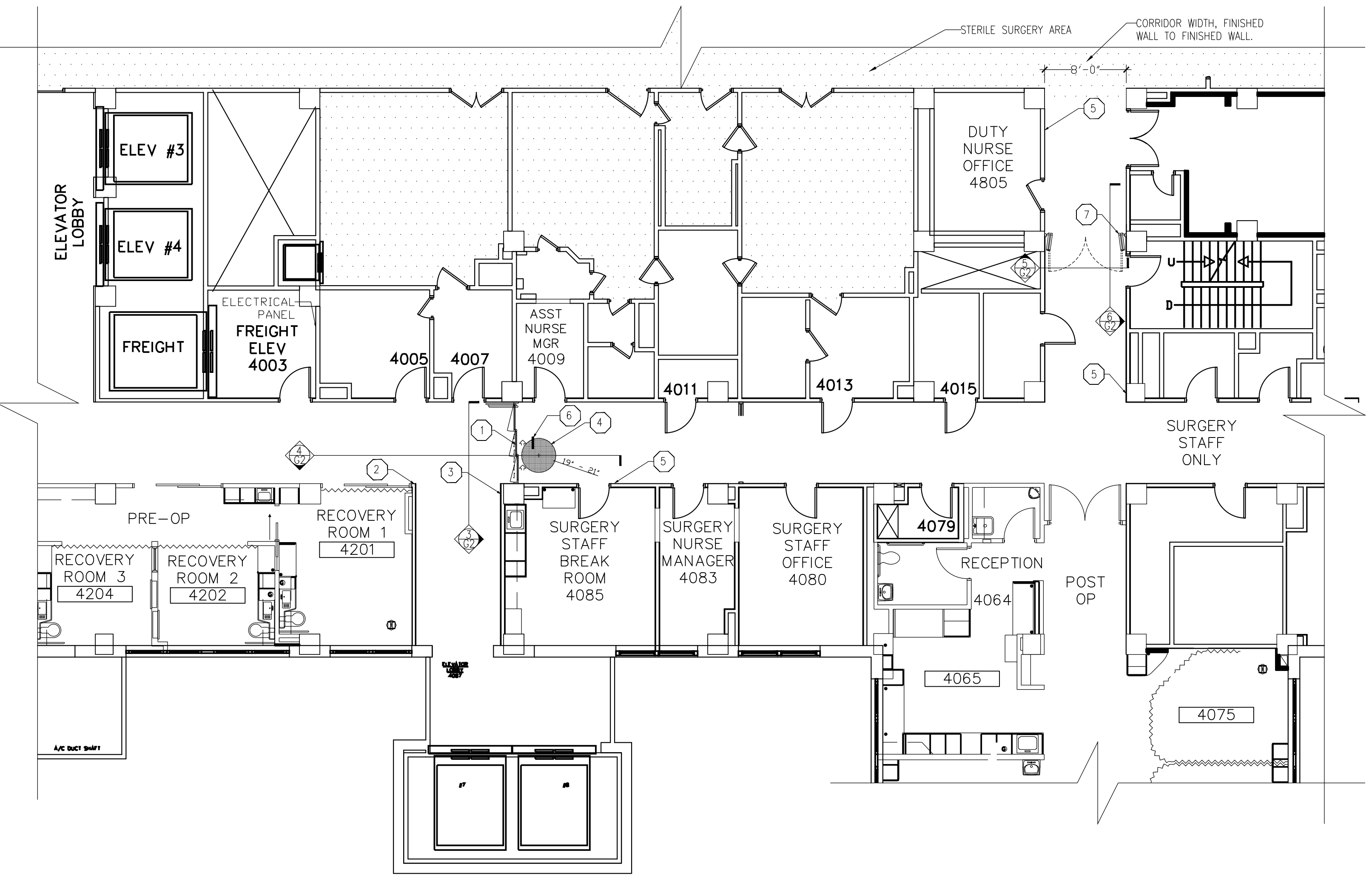


three inches = one foot
one and one half inches = one foot
one inch = one foot
three quarters inch = one foot
one half inch = one foot
three eighths inch = one foot
one quarter inch = one foot
one eighth inch = one foot



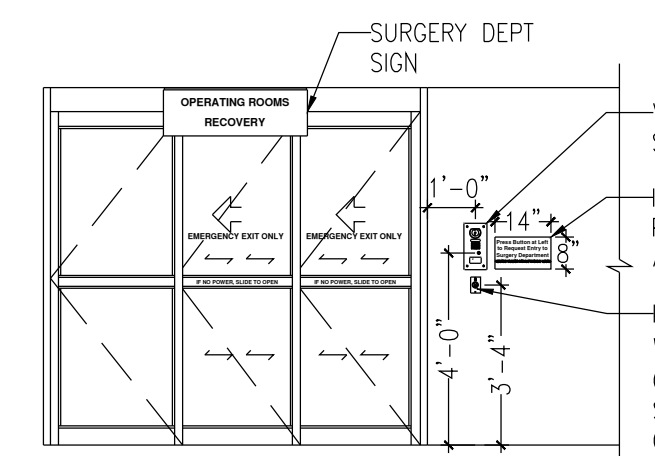
1 DEMOLITION - PLAN VIEW
SCALE: $\frac{1}{8}'' = 1'$



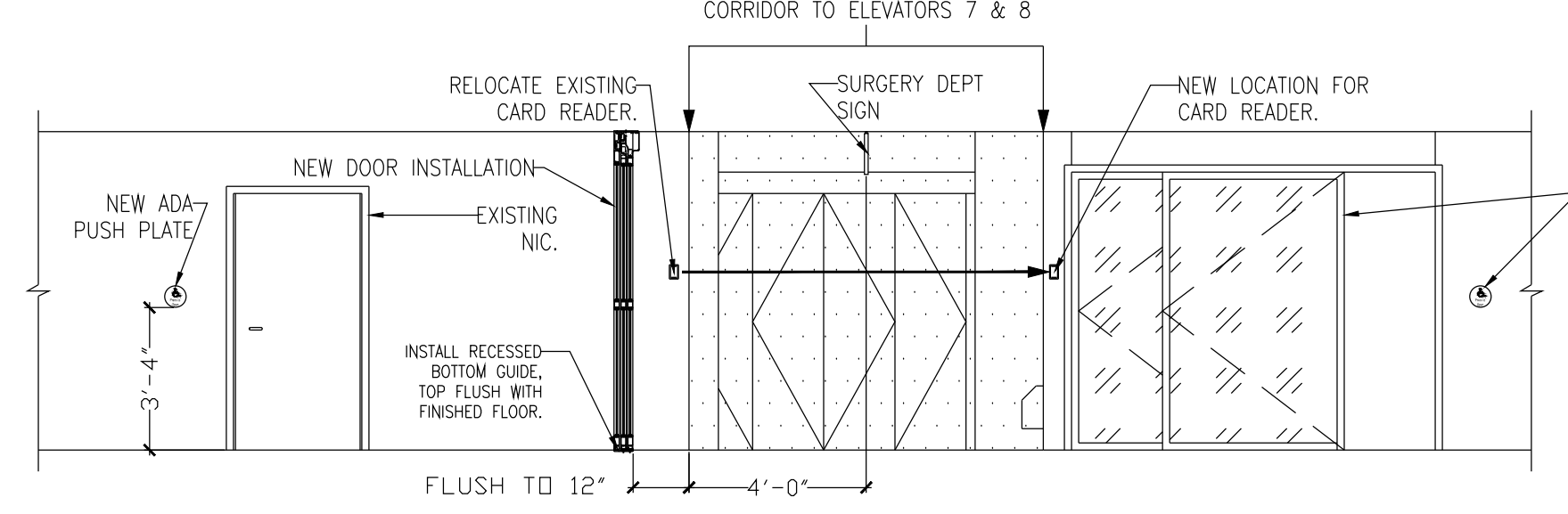
2 NEW CONSTRUCTION - PLAN VIEW
SCALE: $\frac{1}{8}'' = 1'$

- DRAWING NOTES:
1. REMOVE AND DISPOSE OF EXISTING DOOR, COMPONENTS (INCLUDING WALL MOUNTED "PUSH TO OPEN" BUTTON), WIRING, CABLING, AND CONDUIT PER SPECIFICATIONS. REPAIR WALL FINISHES, ACT CEILING AND VCT FLOOR TO MATCH ADJACENT SURFACES.
 2. REMOVE EXISTING CEILING MOUNTED CAMERA AND RETURN TO COR. REMOVE AND DISPOSE OF ALL WIRING, CABLING, AND CONDUIT PER SPECIFICATIONS. REPLACE ACOUSTIC CEILING TILE WITH MATCHING ARCHITECTURAL TILE.
 3. REMOVE EXISTING ENTRY REQUEST BUZZER AND RETURN TO THE COR. REMOVE AND DISPOSE OF ALL ASSOCIATED WIRING AND CONDUIT THAT WILL NOT BE REUSED IN THE NEW INSTALLATION.
 4. REMOVE EXISTING SECURITY CARD READER AND RETAIN FOR REINSTALLATION AS SHOWN IN DRAWING A1-2. REMOVE AND DISPOSE OF ALL ASSOCIATED WIRING THAT WILL NOT BE REUSED FOR NEW INSTALLATION.
 5. REMOVE AND DISPOSE OF EXISTING B-PART DOOR. REMOVE AND DISPOSE OF ALL ASSOCIATED WIRING AND CONDUIT THAT WILL NOT BE REUSED IN THE NEW INSTALLATION.
 6. REMOVE AND DISPOSE OF EXISTING "PUSH TO EXIT" BUTTON. REMOVE AND DISPOSE OF ALL WIRING AND CONDUIT THAT WILL NOT BE REUSED IN THE NEW INSTALLATION.
 7. REMOVE EXISTING SECURITY CARD READER AND RETURN TO THE GOVERNMENT. REMOVE DATA CABLE TO THE PATCH PANEL. ELECTRICAL WIRING MAY BE REUSED FOR NEW INSTALLATION.

- DRAWING NOTES:
1. NEW TELESCOPING SINGLE-PART SLIDING DOOR (SO-SX-SX). SEE DOOR DETAILS (4-G1) AND SCOPE OF WORK AND SPECIFICATIONS.
 2. RELOCATE EXISTING SECURITY CARD READER TO THIS WALL. SEE 4-G2.
 3. VIDEO ENTRY CONTROL SYSTEM DOOR PANEL W/ SECURITY CARD READER AND KEYED OVERRIDE SWITCH THIS WALL. SEE 3-G2.
 4. INSTALL MOTION SENSOR CENTERED ABOVE SLIDING PANELS (MAY BE SURFACE MOUNTED OR INTEGRAL TO THE DOOR OPERATOR OPERATOR CASING). DETECTION ARC EXTENDS 43" - 47" FROM FACE OF FRAME.
 5. INSTALL NEW SURFACE MOUNTED, LOW PROFILE, 6" Ø ROUND ADA PUSH PLATE (2 LOCATIONS). BOTTOM OF PUSH PLATE SHALL BE 40" ABOVE FLOOR LEVEL, AND PLACED 10" - 12" LATERAL DISTANCE FROM NEW DOOR.
 6. INSTALL ILLUMINATED EXIT SIGN PER SPECIFICATIONS.
 7. INSTALL NEW B-FOLD AUTOMATIC DOOR, FULL CORRIDOR WIDTH, IN ACCORDANCE WITH THE DRAWINGS AND SPECIFICATIONS. SEE DOOR DETAILS (8-G2).



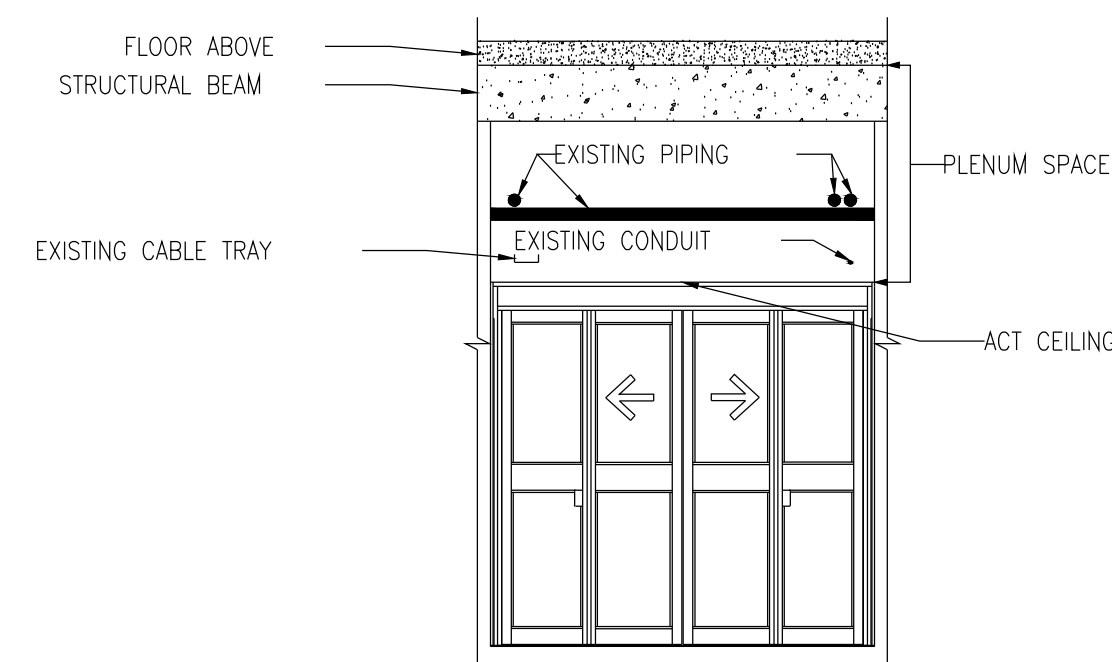
3 ELEVATION VIEW - FROM WEST
SCALE: $\frac{1}{4}'' = 1'$



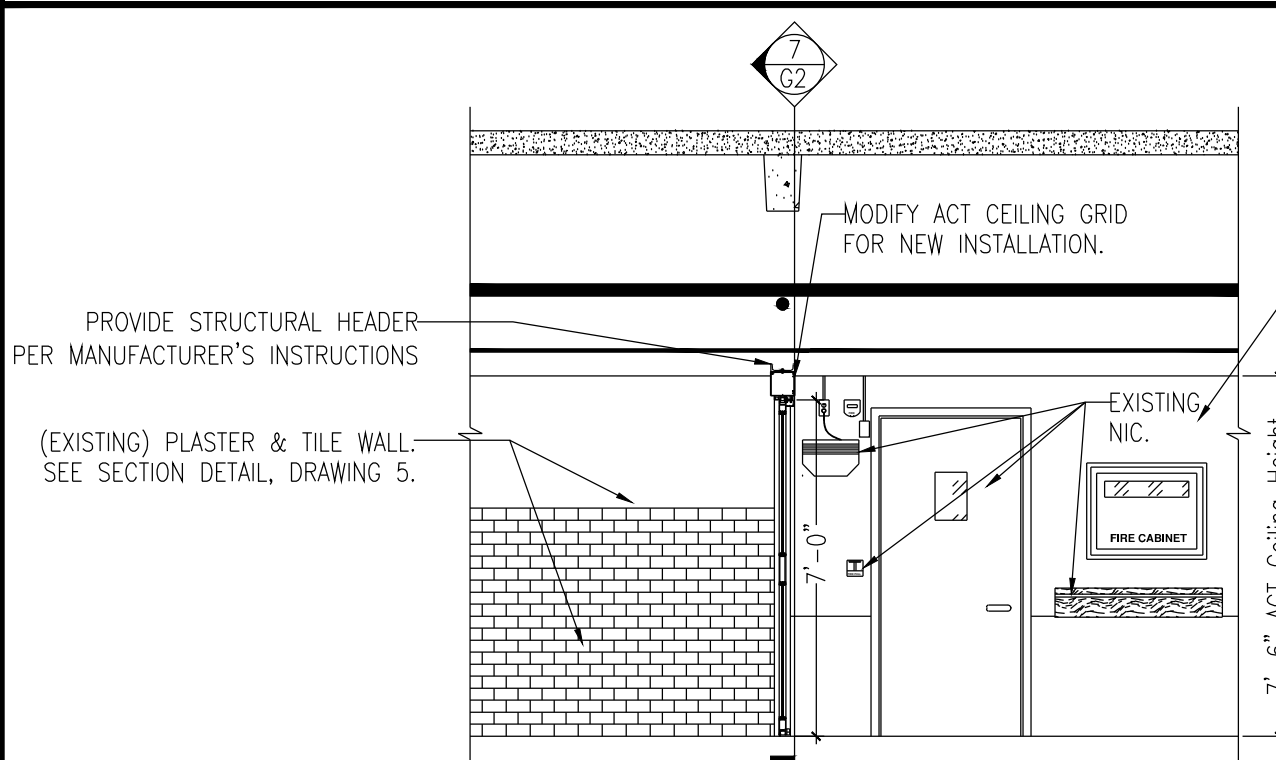
4 ELEVATION VIEW - FROM NORTH
SCALE: $\frac{1}{4}'' = 1'$

VIDEO ENTRY CONTROL SYSTEM

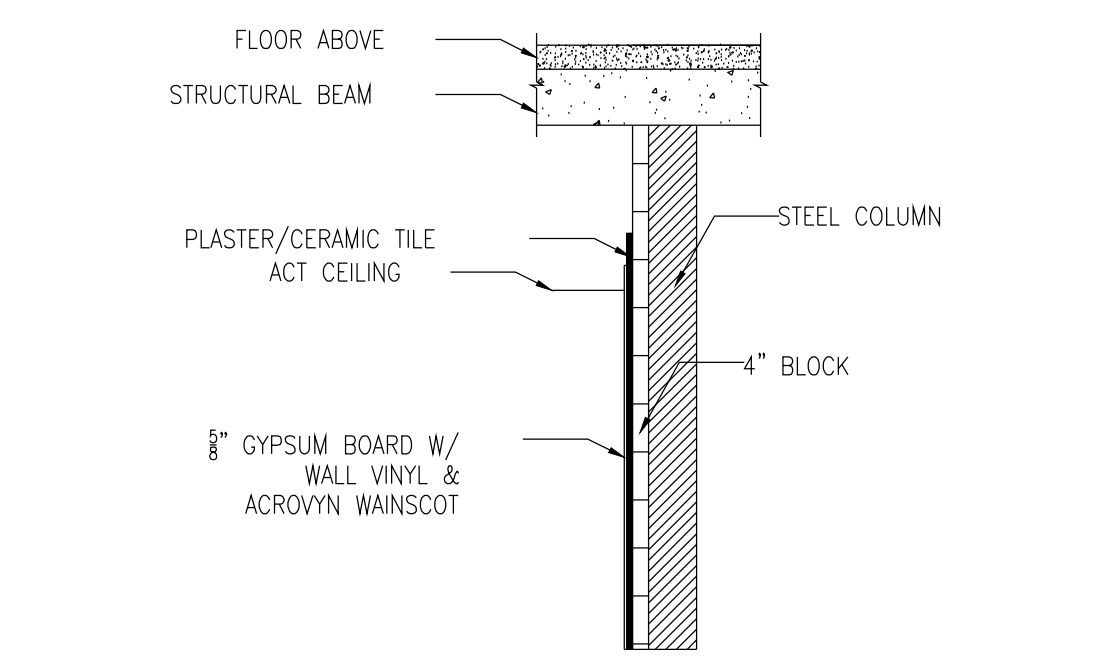
1. VIDEO ENTRY SYSTEM SHALL BE EQUIVALENT TO THE AIPHONE JF SERIES, WITH HANDS FREE VOX CAPABILITY.
2. DOOR SYSTEM SHALL BE EQUIVALENT TO AIPHONE JF-DVF-HID FIXED VIDEO DOOR STATION, ZINC, SURFACE MOUNTED, WITH EMBEDDED HID PROX POINT PLUS CARD READER WITH A STANDARD WIEGAND OUTPUT.
3. INSTALL ONE MASTER STATION EQUIVALENT TO AIPHONE JF2MED MASTER STATION WITH VIDEO COLOR MONITOR IN ROOM 4085 (NURSE DUTY DESK).
4. INSTALL TWO (2) SUB-MASTER STATIONS EQUIVALENT TO AIPHONE JF2HD SUB-MASTER FOR JF2MED. INSTALL ONE (1) EACH IN ROOM 4009 (ASSISTANT NURSE MANAGER'S OFFICE) AND ROOM 4064 (PACU RECEPTION DESK).
5. DOOR RELEASE ON MASTER AND SUB-MASTER STATIONS SHALL BE COMPATIBLE WITH THE LOCKING HARDWARE AND ELECTRICAL CONTROL SYSTEM INSTALLED.
6. AT PROJECT COMPLETION, INSTALLATION SHALL INCLUDE ALL ELECTRICAL AND DATA WIRING REQUIRED TO PROVIDE A COMPLETE AND USABLE SYSTEM CONFORMING TO THE PERFORMANCE REQUIREMENTS.



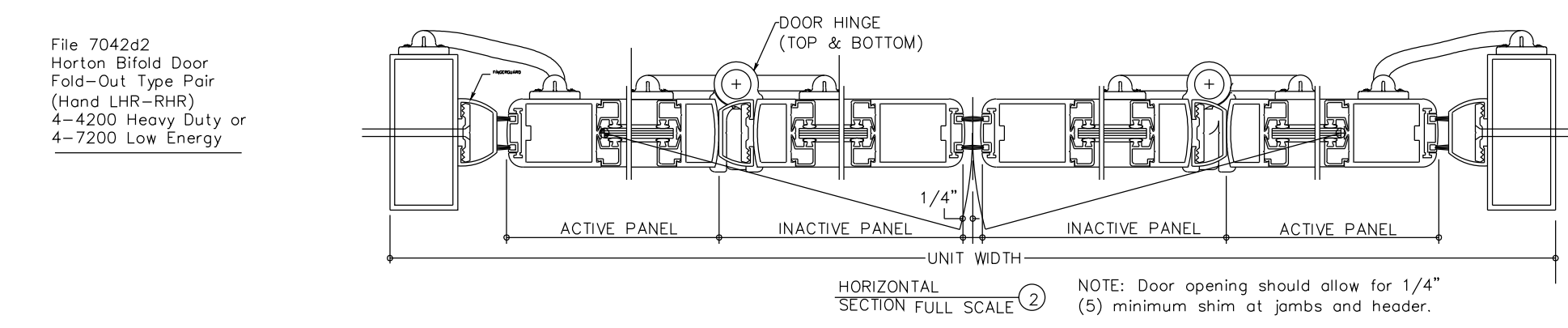
5 ELEVATION VIEW - FROM SOUTH
SCALE: $\frac{1}{4}'' = 1'$



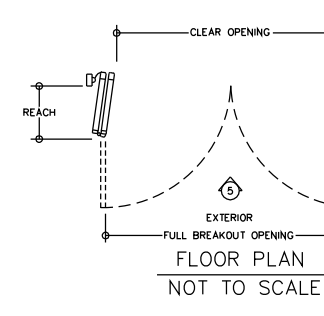
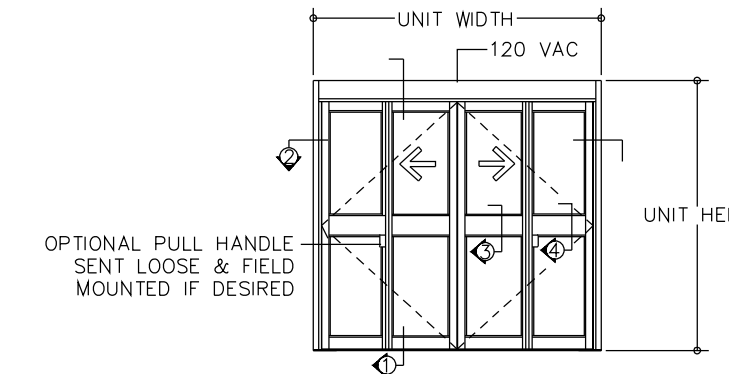
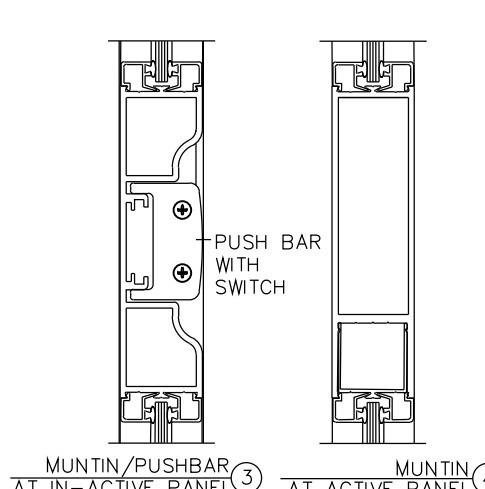
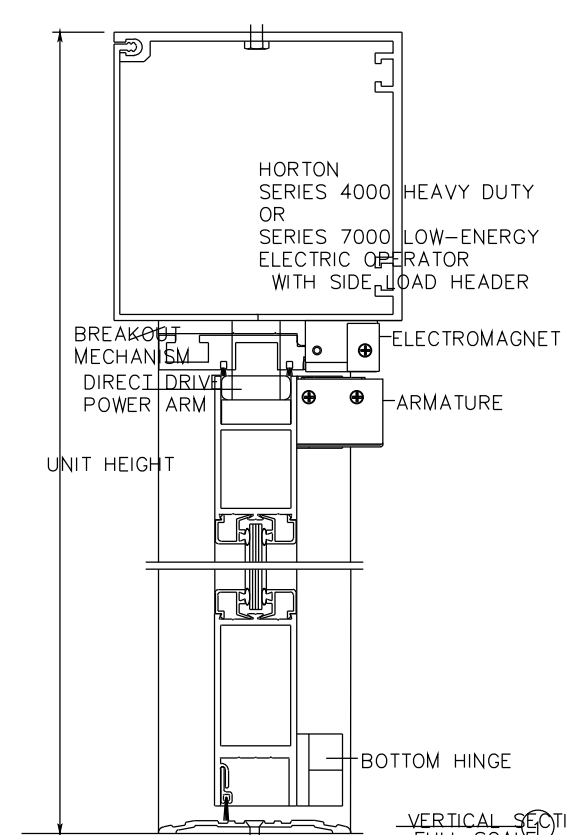
6 ELEVATION VIEW - FROM WEST
SCALE: $\frac{1}{4}'' = 1'$



7 CORRIDOR WALL DETAIL
SCALE: $\frac{1}{4}'' = 1'$




NOTE: Door opening should allow for 1/4" (5) minimum shim at jumbo and header.



8 HORTON DETAILS
NO SCALE

SHEET NOTES:

1. DRAWING REVISED JULY 27, 2012. DRAWING SHEET G2 DATED JULY 20, 2012 IS RESCINDED.

Drawing Title SURGERY DOOR INSTALLATION - 2		Project Title CORRECT LIFE SAFETY CODE DEFICIENCIES PH 3			Project Number 636-12-104		NEBRASKA WESTERN IOWA HEALTHCARE SYSTEM
					Building Number ONE		
Project Coordinator: Chaz Williamson, Staff Engineer Omaha VAMC, 4101 Woolworth Ave, Omaha, NE 68105 Phone: 402-995-4387 (o), 402-681-7462 (c) E-mail: chaz.williamson2@va.gov		Location OMAHA VAMC			Drawing Number G2		OMAHA VAMC  Department of Veterans Affairs
		Date JULY 27, 2012	Checked	Drawn CMW	Dwg 2 of 4		