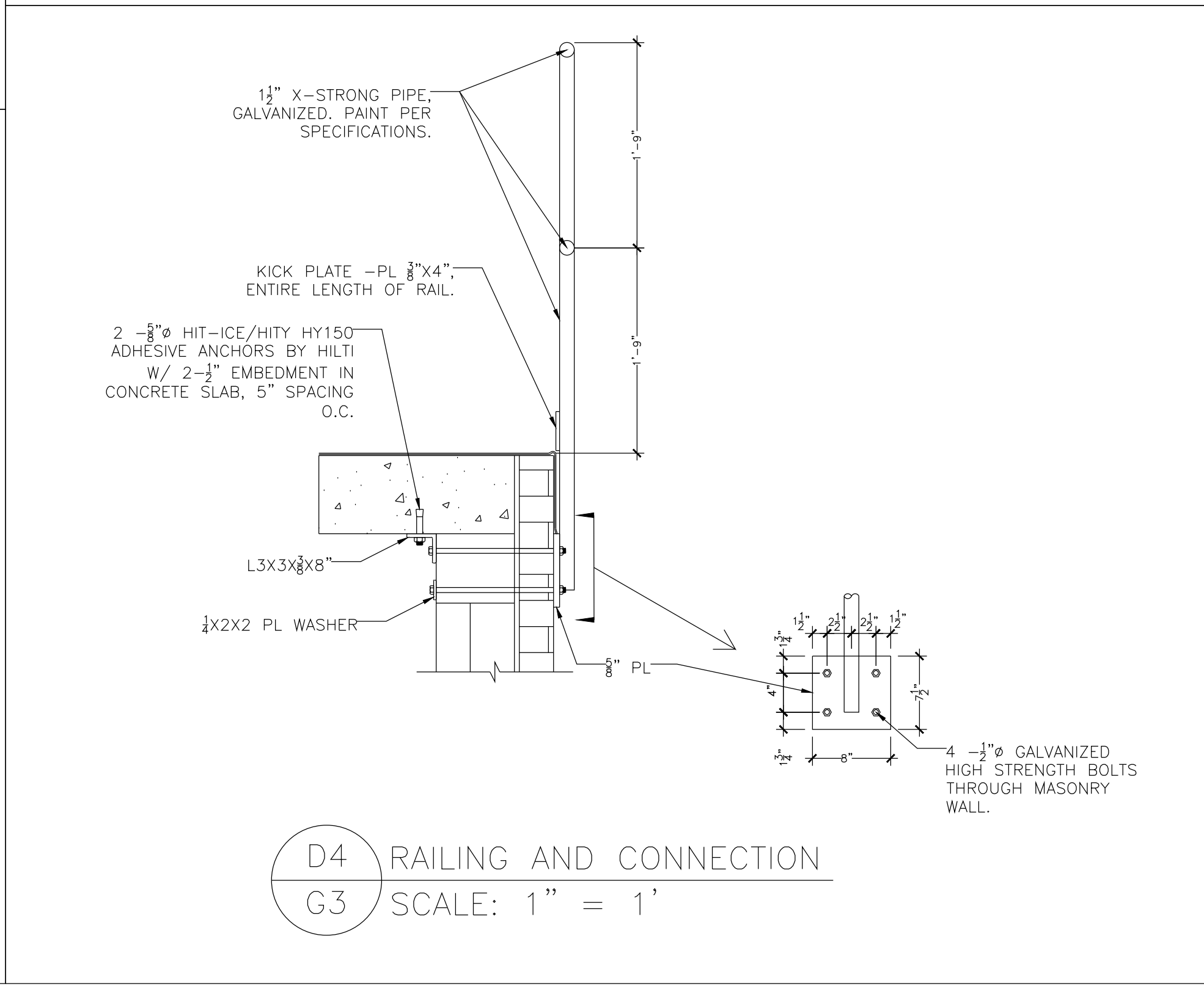
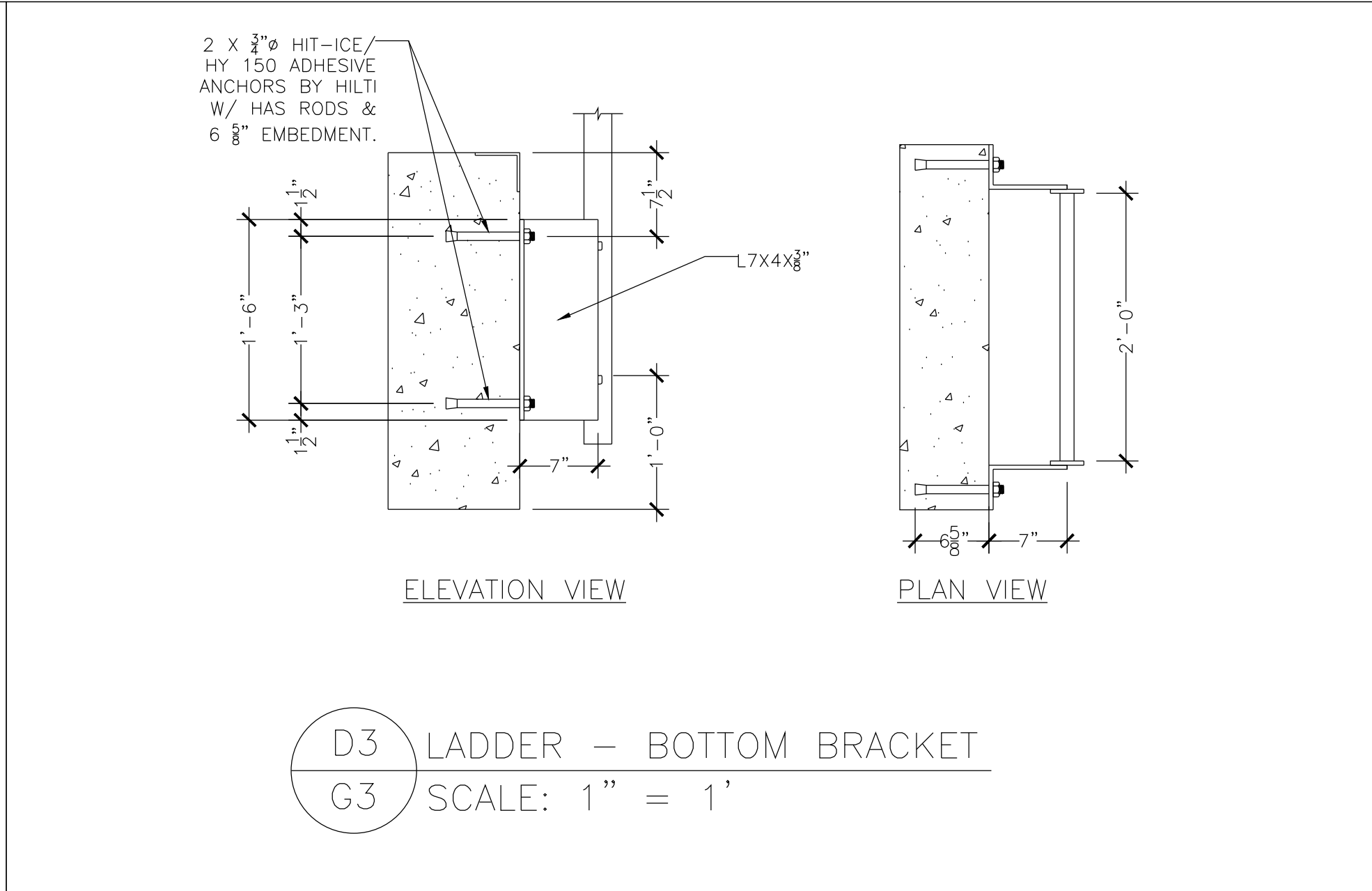
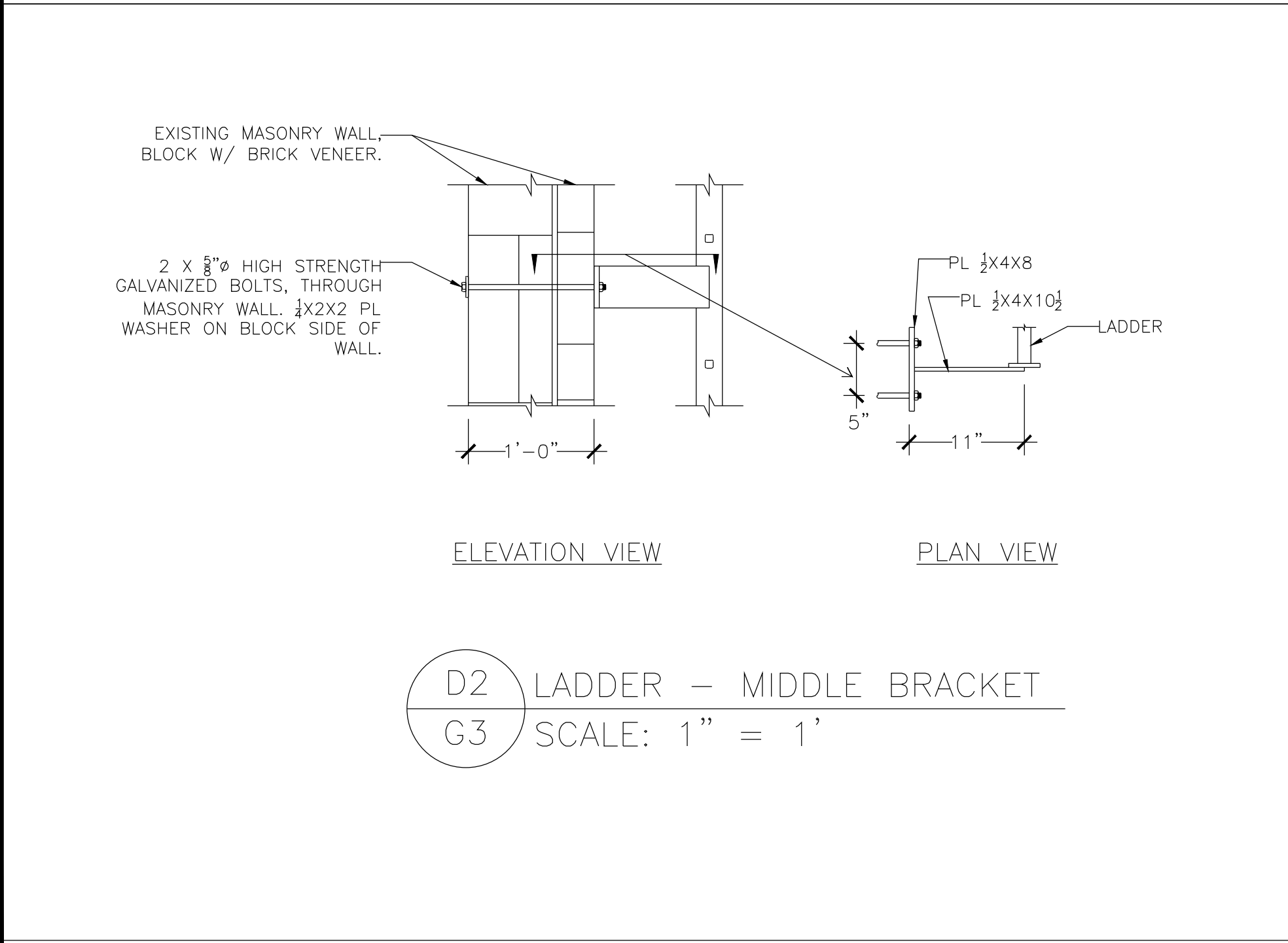
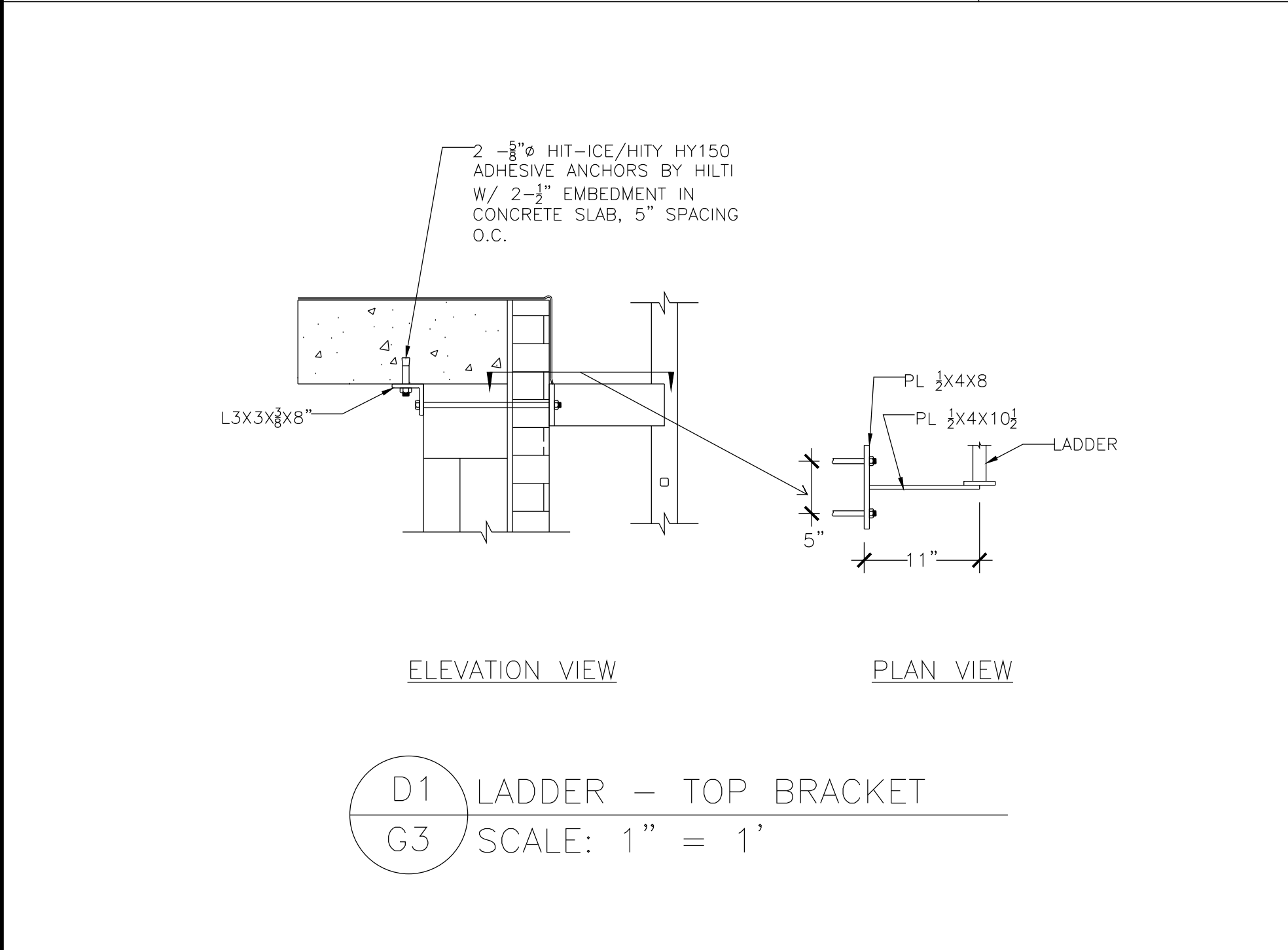
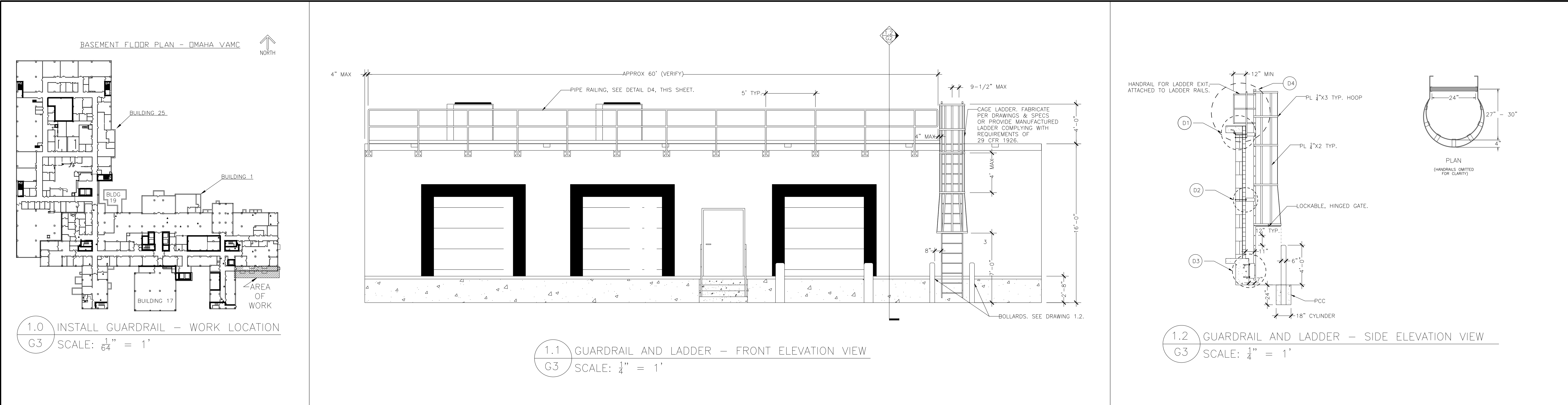


three inches = one foot
one and one half inches = one foot
one inch = one foot
three quarters inch = one foot
one half inch = one foot
three eighths inch = one foot
one quarter inch = one foot
one eighth inch = one foot



GENERAL CONSTRUCTION NOTES

1. INSTALL GUARDRAIL AS SHOWN.
2. INSTALL CAGE LADDER AS SHOWN.
3. INSTALL PCC-FILLED STEEL BOLLARDS AS SHOWN.
4. THE CONTRACTOR SHALL INSPECT THE SITE, STUDY EXISTING CONDITIONS, REVIEW THE DRAWINGS AND SPECIFICATIONS, AND ADJUST FOR ACTUAL FIELD CONDITIONS AT NO ADDITIONAL COST TO THE OWNER. SITE ACCESS CAN BE OBTAINED BY CONTACTING THE VA CONTRACTING REPRESENTATIVE.
5. ACTUAL DIMENSIONS OF EXISTING STRUCTURE MAY VARY SLIGHTLY FROM THE DIMENSIONS SHOWN ON THESE DRAWINGS. CONTRACTOR SHALL VERIFY ALL DIMENSIONS PRIOR TO FABRICATION OF STEEL COMPONENTS. CONTRACTOR MAY MODIFY DIMENSIONS CONSISTENT WITH THE INTENT OF THESE SPECIFICATIONS TO FACILITATE FABRICATION AND ASSEMBLY.
6. ALL AREAS SHALL BE KEPT FREE OF MATERIAL AND DEBRIS. ON-SITE STORAGE OF MATERIAL AND EQUIPMENT SHALL BE LIMITED, AND ONLY IN A LOCATION(S) DESIGNATED BY THE OWNER. MATERIAL SHALL BE STORED OFF-SITE UNTIL TIME OF INSTALLATION.
7. PROTECT ALL WORK AREAS AND EQUIPMENT FROM DAMAGE.
8. ALL MATERIAL SHALL BE NEW, OF THE BEST QUALITY, AND FREE FROM DEFECTS.
9. THE CONTRACTOR SHALL BE RESPONSIBLE FOR ALL DAMAGE TO EXISTING STRUCTURES AND EQUIPMENT RESULTING FROM WORK UNDER THIS CONTRACT, AND SHALL RESTORE ANY DAMAGE TO ITS PRIOR CONDITION.
10. THE CONTRACTOR SHALL WORK WITH CONDITIONS AS THEY EXIST ON-SITE.
11. WELDS, WHERE SPECIFIED, SHALL BE CONTINUOUS FILLET WELDS WITH $\frac{3}{8}''$ MINIMUM DEPTH UNLESS OTHERWISE NOTED. DEPTH OF WELDS SHALL NOT EXCEED MAXIMUM DEPTH ALLOWED BY THE AMERICAN INSTITUTE OF STEEL CONSTRUCTION. ALL WELDS, EXCEPT TO EXISTING STRUCTURE, SHALL BE SHOP-WELDED IN A CONTROLLED ENVIRONMENT AND IN A MANNER APPROPRIATE TO THE MATERIAL BEING WELDED. FIELD WELDS SHALL BE COMPLETED AS PRESCRIBED IN THE SPECIFICATIONS.
12. ALL WORK SHALL BE COMPLETED IN ACCORDANCE WITH APPLICABLE CODES, REGULATIONS, AND INDUSTRY PRACTICES.
13. ALL STEEL COMPONENTS SHALL BE HIGH STRENGTH-LOW ALLOY, HOT-DIPPED GALVANIZED (ZINC), AS SPECIFIED.
14. GALVANIZED COATING REMOVED DURING THE FABRICATION PROCESS SHALL BE REPAIRED PER THE SPECIFICATIONS.
15. ALL NUTS SHALL BE DISTORTED THREAD TYPE CENTERLOCK NUTS, FABRICATED OF THE SAME GRADE AND TYPE OF STEEL AS THE BOLTS.
16. ALL BOLT HOLES SHALL BE WITHIN $\frac{1}{16}''$ OF THE BOLT DIAMETER.
17. FINISHES:
 - 17.1. PRIME AND PAINT PER SPECIFICATIONS.
 - 17.2. RAILING: DARK BRONZE
 - 17.3. PLATES AND BRACKETS: DARK BRONZE
 - 17.4. LADDER (IF PAINTABLE): DARK BRONZE
 - 17.5. LADDER SAFETY CAGE AND BOLLARDS: SAFETY YELLOW

SHEET NOTES 1. SCALE SHEET SIZE: 30"X 42" 2. DRAWING REVISED JULY 27, 2012 TO CORRECT SHEET REFERENCE AND TITLE BLOCK ERRORS. DRAWING SHEET G3 DATED JULY 20, 2012 IS RESCINDED.		Drawing Title INSTALL GUARDRAIL LOADING DOCK ROOF	Project Title CORRECT LIFE SAFETY CODE DEFICIENCIES PH 3	Project Number 636-12-104	Office of Construction and Facilities Management Department of Veterans Affairs
Revisions		Project Coordinator Chaz Williamson, Staff Engineer Omaha VAMC, 4101 Woolworth Ave, Omaha, NE 68105 Phone: 402-935-4387 (o), 402-681-7462 (c) E-mail: chaz.williamson2@va.gov	Location OMAHA VAMC	Building Number ONE	
		Date JULY 27, 2012	Checked	Drawn CMW	
				Dwg. 3 of 4	
				Drawing Number G3	