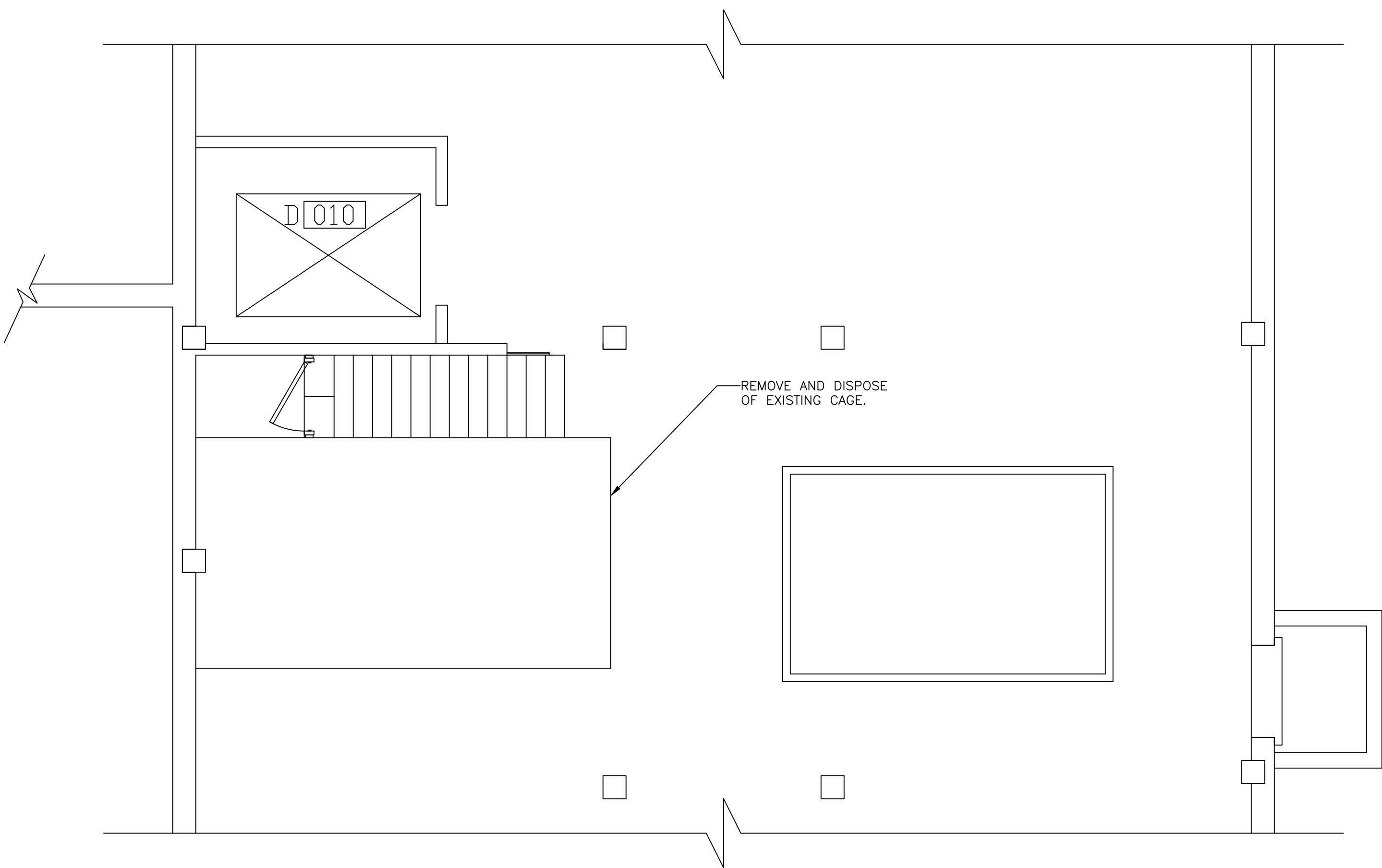
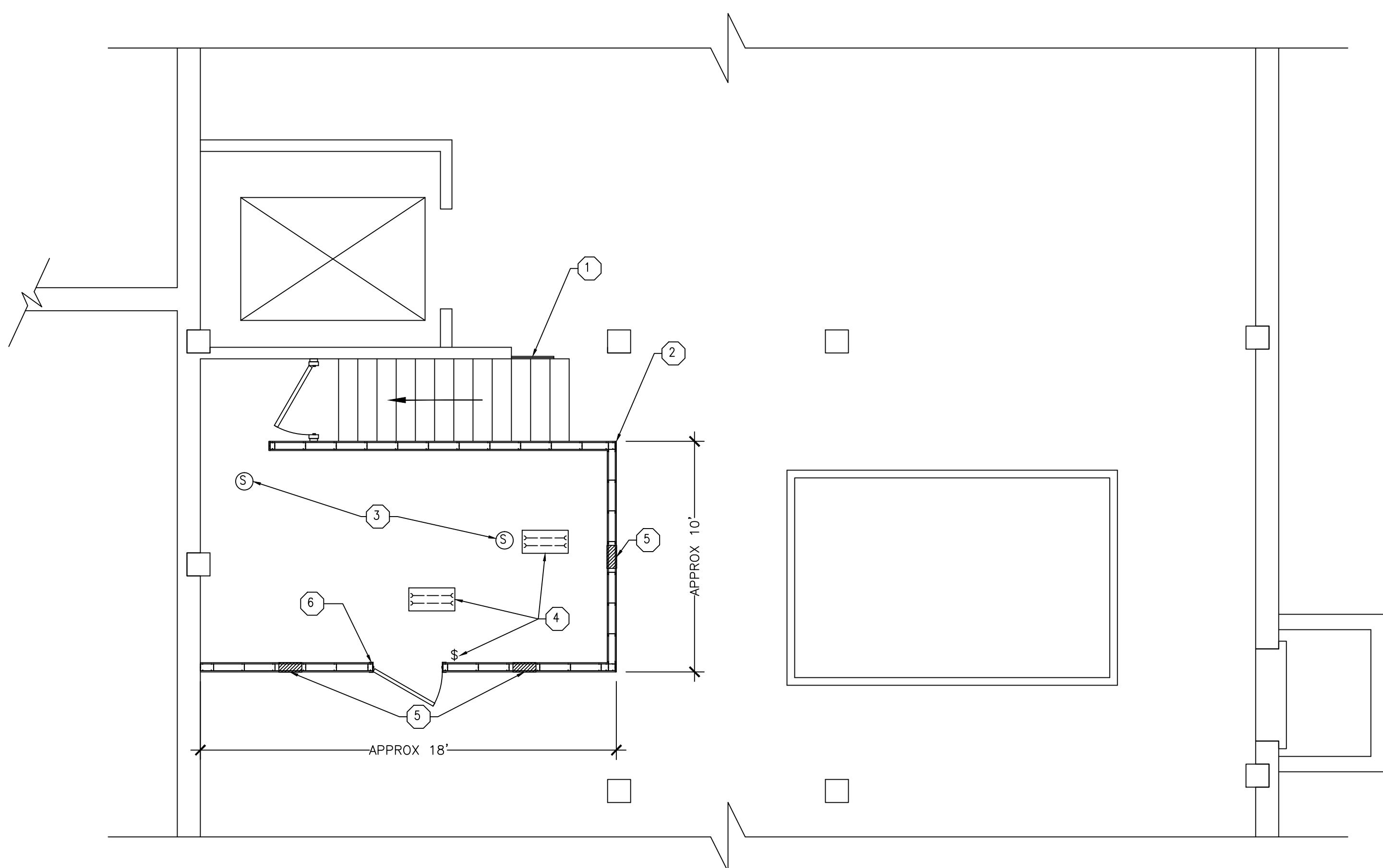


three inches = one foot  
one and one half inches = one foot  
one inch = one foot  
three quarters inch = one foot  
one half inch = one foot  
three eighths inch = one foot  
one quarter inch = one foot  
one eighth inch = one foot



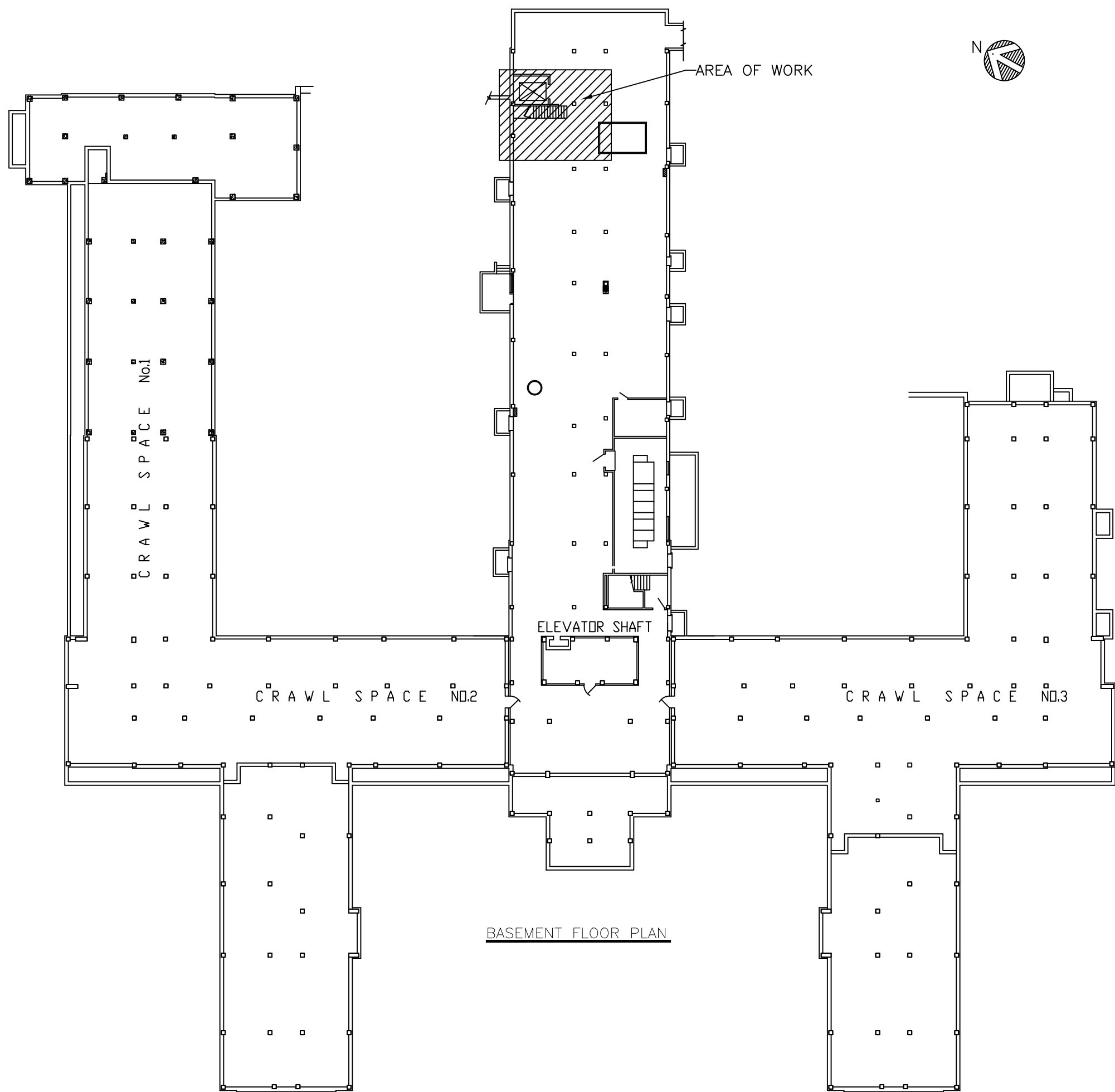
1.1 DEMOLITION PLAN  
G4 SCALE: 1/4" = 1'



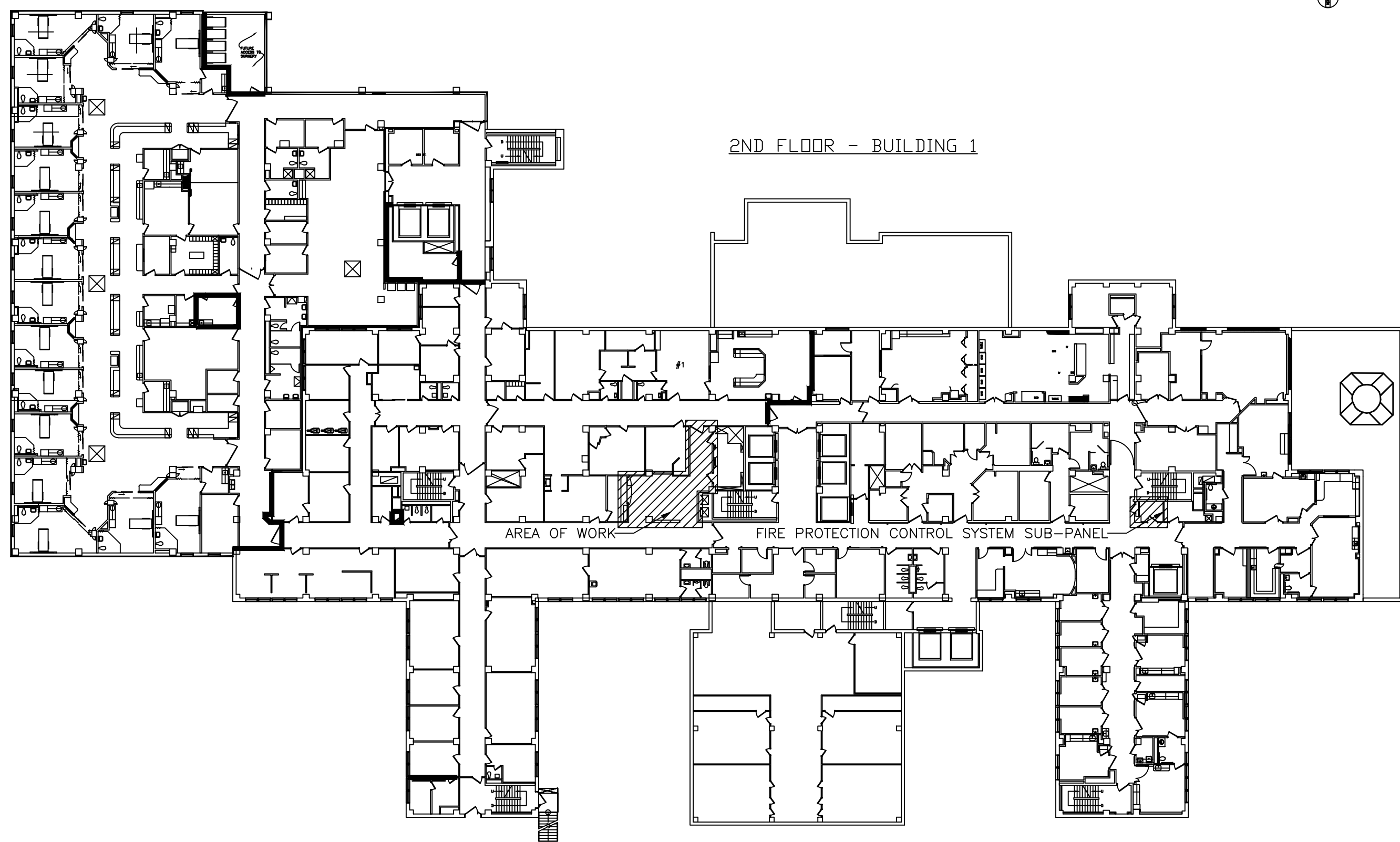
1.2 CONSTRUCTION PLAN  
G4 SCALE: 1/4" = 1'

- DRAWING 1 NOTES:**
1. INSTALL TWO (2) LAYERS 5/8" TYPE X GYPSUM BOARD. PROVIDE PROTECTIVE TRIM AT EXPOSED EDGES. FINISH AND SEAL WITH UL-RATED 2-HOUR FIRE CAULK.
  2. REMOVE AND DISPOSE OF EXISTING CHAIN-LINK CAGE AND STEEL FRAME. CONSTRUCT NON-LOAD BEARING GYPSUM BOARD WALL. GALVANIZED STEEL FRAMING, 5/8" TYPE X GYPSUM BOARD BOTH SIDES, CONSTRUCTED AND FINISHED ACCORDING TO THE SPECIFICATIONS.
  3. INSTALL SMOKE DETECTORS IN ACCORDANCE WITH APPLICABLE CODE REQUIREMENTS. CONNECT TO EXISTING SIMPLEX 4120 FIRE PROTECTION SYSTEM CONTROL PANEL SO THAT DETECTION OF SMOKE IN THE ELEVATOR EQUIPMENT ROOM INITIATES RECALL FOR THE FREIGHT ELEVATOR.
  4. REWIRE EXISTING LIGHT FIXTURES TO SEPARATE CIRCUIT. INSTALL NEW WALL SWITCH AS SHOWN.
  5. THROUGH WALL 12" X 12" AIR VENTS WITH FIRE DAMPERS. FIRE DAMPERS SHALL CLOSE UPON DETECTION OF SMOKE.
  6. INSTALL 1-3/4" HOLLOW CORE METAL DOOR, 36" X 80", WITH CLOSER AND MORTISE LATCHING MECHANISM AS REQUIRED BY THE SPECIFICATIONS. DOOR AND FRAME SHALL BE UL-FIRE RATED AND LABELED FOR 1-1/2 HOURS. DOOR OPERATION SHALL COMPLY WITH NFPA REQUIREMENTS.

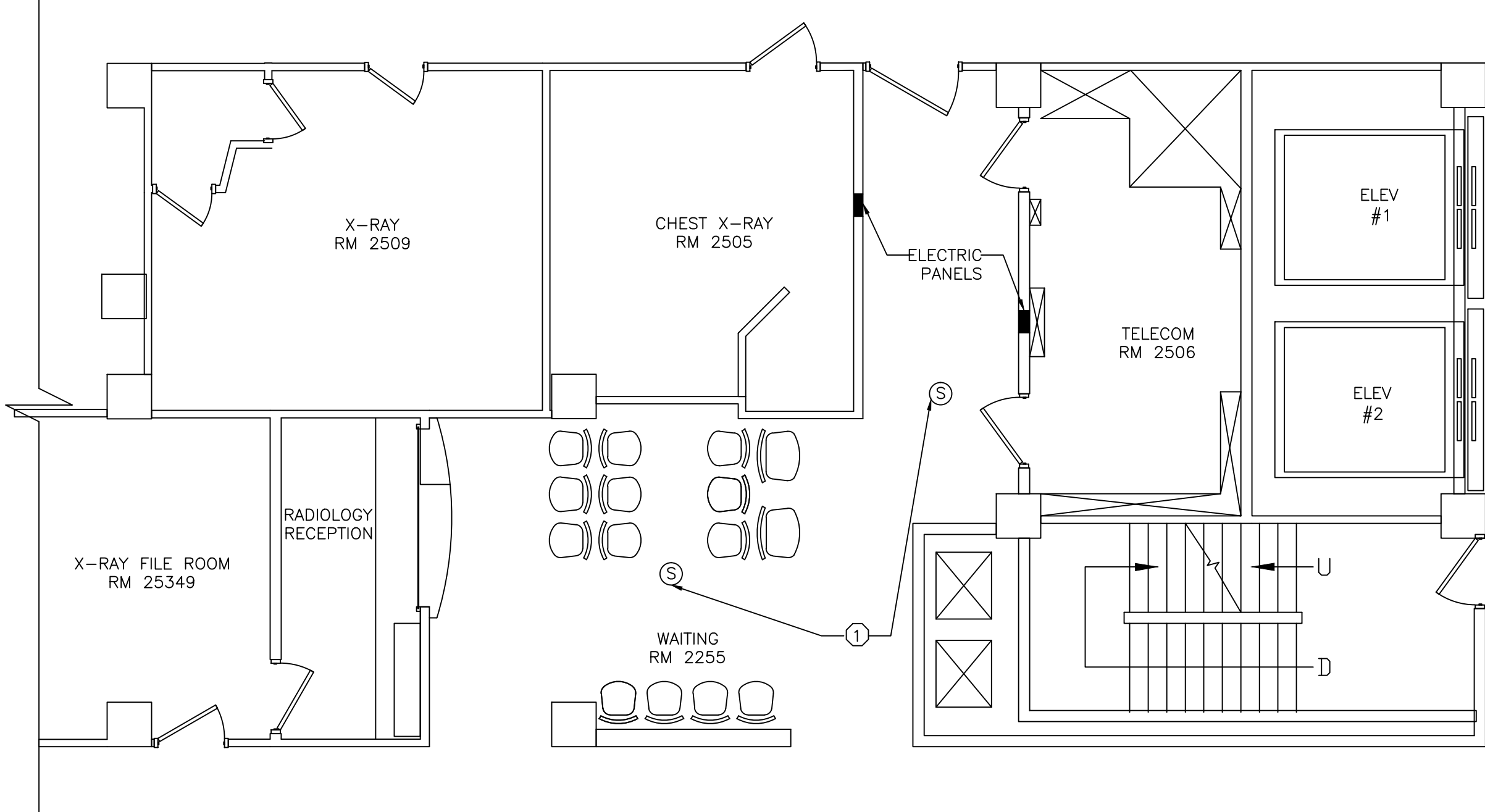
- GENERAL NOTES:**
1. CONSTRUCT WALL TO THE CONCRETE DECK ABOVE. HEIGHT TO DECK VARIES FROM 7' - 9'. SEAL ALL EDGES AND PENETRATIONS WITH UL-RATED 2-HOUR FIRE CAULK.
  2. WALL DIMENSIONS PROVIDED ARE APPROXIMATE. CONSTRUCT WALL TO PROVIDE A MINIMUM OF 4' CLEARANCE AROUND EQUIPMENT, WHERE PRACTICAL.



1.0 CONSTRUCT FIREWALL - GI CBOC  
G4 SCALE: 1/32" = 1'



2.0 INSTALL SMOKE DETECTORS, RADIOLOGY WAITING AREA - OMAHA  
G4 SCALE: 1/32" = 1'



2.1 INSTALL SMOKE DETECTORS  
G4 SCALE: 3/16" = 1'

#### SHEET NOTES

1. SCALED PLOT SIZE: 30" X 42"
2. DRAWING REVISED JULY 27, 2012 TO CORRECT TITLE BLOCK ERRORS. DRAWING G4 DATED JULY 20, 2012 IS RESCINDED.

**Drawing Title**  
CONSTRUCT FIRE WALL - GI CBOC  
INSTALL SMOKE DETECTORS - OMAHA

**Project Coordinator**  
Chaz Williamson, Staff Engineer  
Omaha VAMC, 4101 Wadsworth Ave, Omaha, NE 68105  
Phone: 402-995-4387 (o), 402-681-7462 (c)  
E-mail: chaz.williamson2@va.gov

**Project Title**  
CORRECT LIFE SAFETY  
CODE DEFICIENCIES PH 3

**Location**  
OMAHA VAMC AND GRAND ISLAND CBOC

**Project Number**  
636-12-104

**Building Number**  
VARIES

Office of  
Construction  
and Facilities  
Management

Department of  
Veterans Affairs

**Drawing Number**  
G4

Dwg. 4 of 4