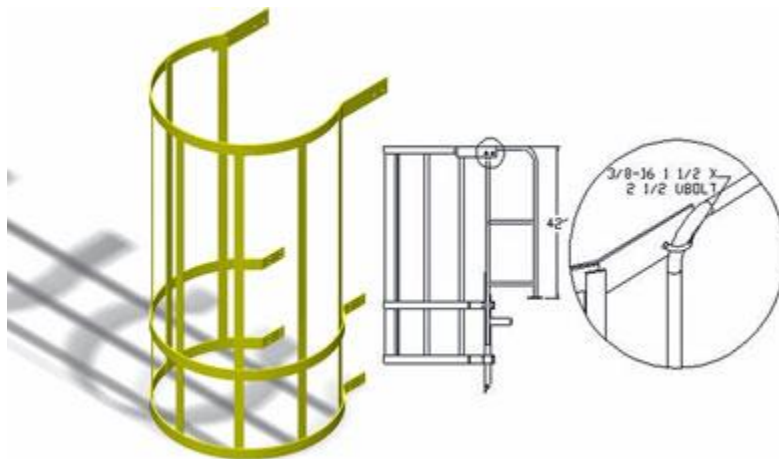


SALIENT / PERFORMANCE CHARACTERISTICS

Fixed Ladder with Walk-Through Handrails & Safety Cages (Series FLWC)

Our FLWC series of fixed ladders have the same 42" walk-through handrail as the FLW ladders, as well as a cage that runs to 42" above the top rung. These access ladders can be used for heights of 8' up to 30'. They are welded in one piece 10 to 14 rung models and spliced into two or more sections on 15 rung to 30 rung ladders.

- Same specs as Fixed Ladder with additional walk through handrails & safety cage features
- Cage begins 6' 9" from bottom rung



Modular bolt-on welded steel cage section for through ladder

Welded Steel Cage (C)

Our steel fixed ladder cages are designed for use either with our ladders in a bolt on setup or with other existing ladders with a weld on configuration. All you need to know is the existing ladder's height, width and side member construction and we will match the proper cage to it. The welded steel cage is available for ladders with both the walk through handrail and those without.

Although cages are not required by OSHA standards anymore as they have changed to require cable and track systems utilizing harnesses, ladder cages have always been and will still be available as a safety need. Cable systems require the ladder climber to have a harness in order to utilize the safety benefit whereas cages are always in place. Having a cage on your ladder protects the climber regardless to whether or not they brought the additional equipment needed to safely use the other fall protection systems on ladders.

The prior OSHA standard required cages on all ladders only after the ladder climb was taller than 20', but most of our caged ladders installed incorporated cages at lower heights so even though the OSHA standards do not require them anymore, we will continue to offer this safety option.

- Use: To attach to existing fixed ladders up to 20" wide - customized options available.
- Assembly: Heavy-duty one piece welded. Modular spliced cage sections are also available.
- Standard Lengths: varies from 7'6" to 27'6"
- Custom Length: Cage should begin 7'-8' above floor and extend 42" above landing surface (except when used with hatches)
- Cage Design: Flared at the bottom for easy entry. Designed for OSHA standards
- Welded steel cages are available as a weld on unit, or as a bolt on design to attach to your existing fixed roof ladder (FLS or FLW models)

FIXED STEEL LADDERS - SERIES F AND SERIES M

Our fixed steel ladders are designed for use where safe, solid vertical climbing access is required. Series F and Series M modular fixed steel ladders are available with and without walk-thru handrails at the top landing surface. Standard fixed and walk-thru models can be used up to 20' without safety cages. OSHA requires safety cages on ladder heights exceeding 20'. Separate cages are offered for updating older ladders to current safety standards. All our fixed ladders meet or exceed ANSI A14.3, OSHA 1910.27 and 1926.1053 standards.



14 RUNG
STANDARD
F14S



14 RUNG
WITH CAGE
F14SC

SERIES F FIXED LADDERS:

Ladders are heavy duty one-piece welded assemblies.

SERIES M MODULAR FIXED LADDERS: Ladders are heavy duty sub-assemblies, no section is greater than 7' in length.

CONSTRUCTION FEATURES:

Side members are 1/4"x2"x2" steel angle. Climbing rungs are 3/4" corrugated steel round rungs space on 12" centers. Stand-off brackets are 7".

Welded one-piece, gray & yellow powder coat finish available at no additional charge.

FIXED LADDERS WITH SAFETY CAGES:

Standard fixed steel ladders are combined with safety cage protection. They are available in 10' through 29' sizes and are ideal for hatch-way or side step landing access.

CAGE FEATURES:

OSHA design safety cages have flared bottom opening for easy entry.

Left or right side step access cage designs are available at no charge.

Cage begins 6' 9" (7'-series M) from bottom rung.

Gray & Yellow powder coat finish available.

Stainless Steel Construction also available



**11 RUNG
WITH WALK-THRU
F11W**



**11 RUNG WITH
WALK-THRU AND
CAGE: F11WC**

FIXED LADDER WITH WALK-THRU HANDRAILS:

Ladders are designed for applications where safe landing access is required. They are one-piece welded assemblies for use in applications less than 20' in vertical height.

CONSTRUCTION FEATURES:

Side members are 1/4"x2"x2" steel angle. 3/4" corrugated steel round climbing rungs on 12" centers. Stand-off brackets are 7".

Walk-thru handrails extend 42" above landing surface.
Mounting brackets included.

Welded one-piece, gray & yellow powder coat finish available at no additional charge.

FIXED LADDER WITH WALK-THRU HANDRAILS AND SAFETY CAGES:

Designed for safe landing access and available from 10' to 29'. Cages and walk-thru handrails extend 42" above landing surface.

CAGE FEATURES:

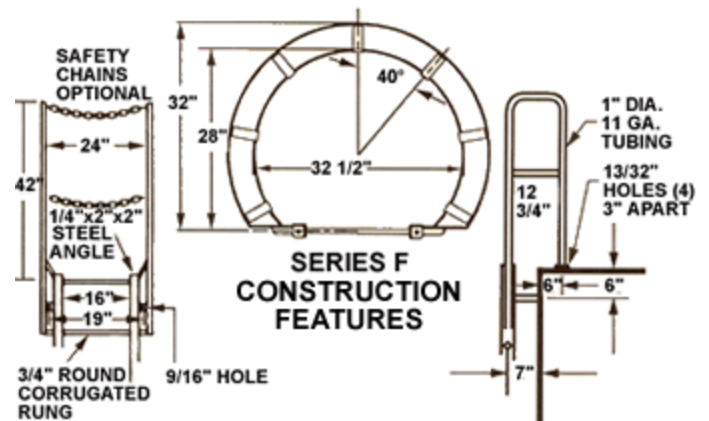
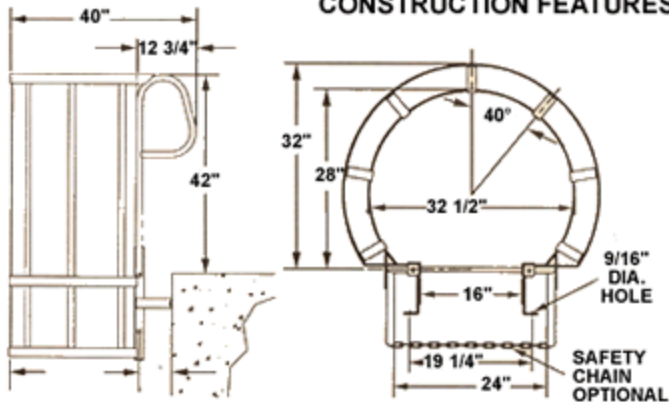
Safety cages are designed to OSHA specifications with flared bottom opening for easy entry.

Cage begins 6' 9" (7'-series M) from bottom rung.

Gray & Yellow powder coat finish available.

**Stainless Steel Construction
also available**

SERIES M - MODULAR FIXED LADDER CONSTRUCTION FEATURES



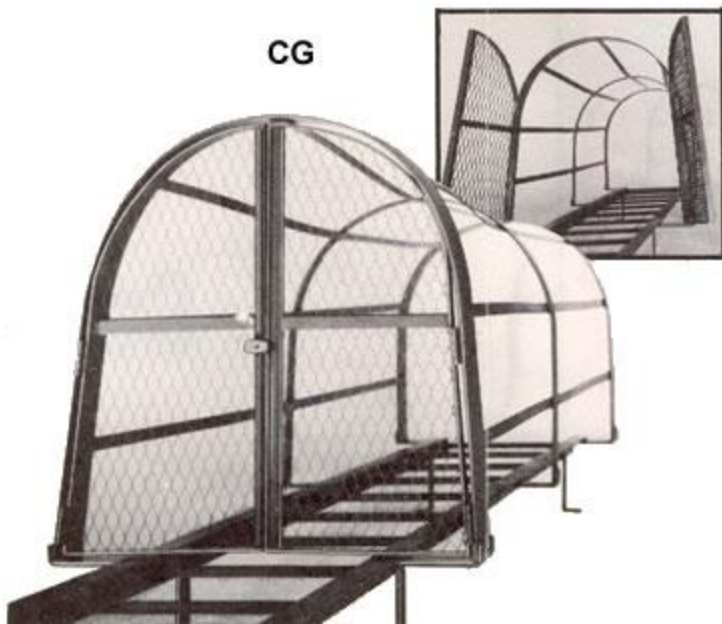
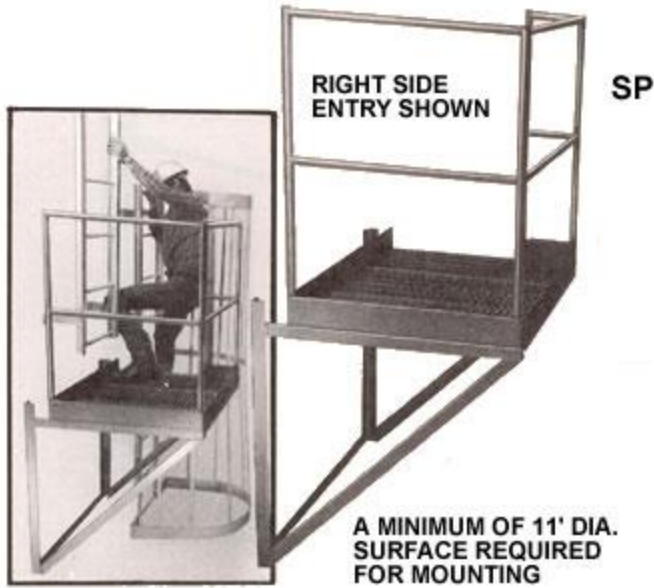
OSHA NOTE: Heights exceeding 30' require a standoff platform (see option model SP)
SHIPPING NOTE: All 15 thru 25 rung Series F models with cages ship in 2 sections. All 26 thru 30 rung models ship in 3 sections.
HOT DIP GALVANIZED FINISH OR STAINLESS STEEL CONSTRUCTION CAN BE QUOTED.

ACCESSORIES

Our fixed steel ladder accessories are designed to provide an additional measure of safety or security for any fixed steel ladder.

STANDOFF LANDING PLATFORM:
Standoff landing platforms with offset caged ladders are required by OSHA Standard 1910.27 at 30' maximum height intervals. These rugged, pre-engineered platforms are constructed with left or right entries as required.

OPTION SP
Shipping wt. 165 lbs.

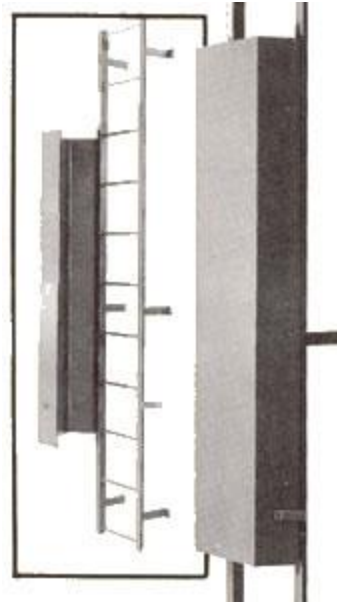


SECURITY CAGE ENTRY GATE:

The cage security gate is designed to prevent unauthorized entry into the bottom of the ladder cage. Doors have lockable hasp for complete security.

OPTION CG

Shipping wt. 20 lbs.



LG

SECURITY LADDER GUARD:

The ladder guard is mounted directly over the ladder climbing rungs to prevent unauthorized use. It is available in either 6' or 8' lengths. The guard has a one piece piano hinge, and is furnished with lock-open and lock-closed hasps.

OPTION LG-6

.....

Shipping wt. 62 lbs.

OPTION LG-8

.....

Shipping wt. 83 lbs.

Fixed Steel Ladders, Vertical Climbing Access, Walk-Thru Handrails, OSHA, Stainless Steel Construction, Fixed Ladders with Safety Cages, Standoff Landing Platforms with Offset Caged Ladders, Security Cage Entry Gate, and Security Ladder Guard from your

source
for material handling equipment.

[Home](#) - [Order](#) - [Search](#) - [Quote](#) - [Contact Us](#) - [About Us](#) - [My Account](#) - [Shopping Cart](#)