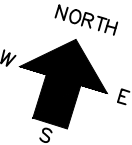
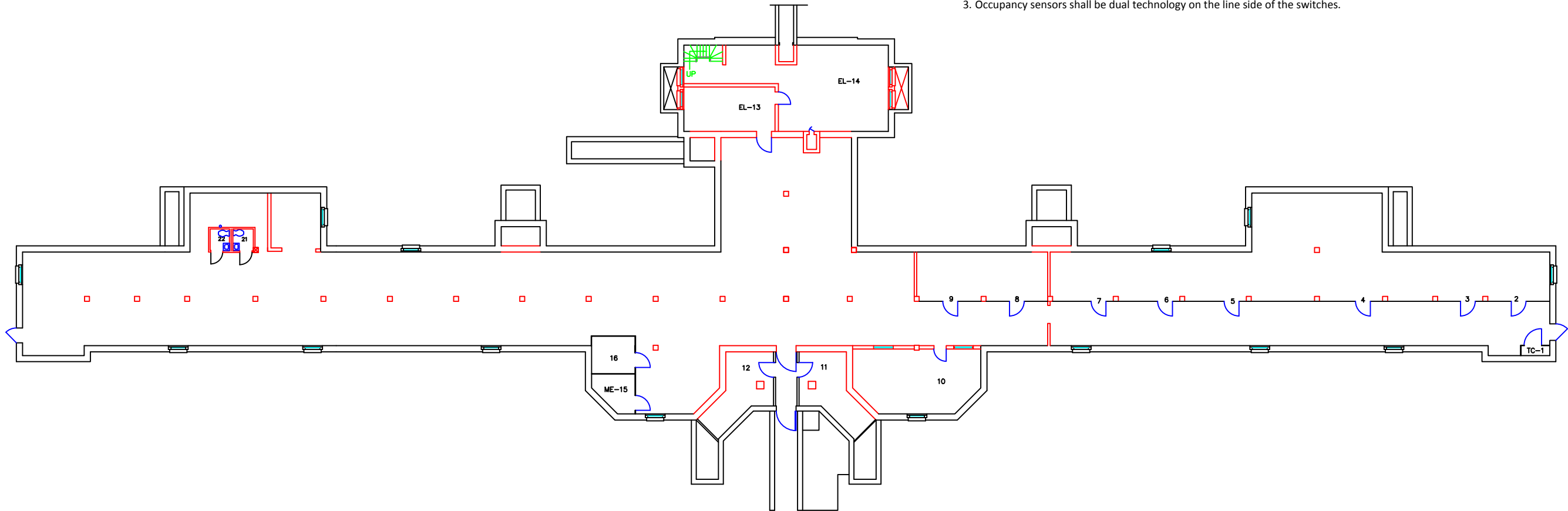


New Work Drawing Notes (Reference Drawing #2- Office area) .

1. Install a new 125A/3P breaker in the existing SQ-D Distribution Panel MDP to feeder new Panel “ELC” Via a 2-1/2”C 4#1/0 + 4#G.
2. Install a new 125A M.L.O NOQD Square - D or equal Panelboard with 4-30A/3P, 2-40A/3P, 4-30A/1P, 14-20A/1P, and busing to allow for expansion to 42 poles. Surface Mounted with hinge door 22,000 A.I.C. (Breaker given are for pricing purposes, coordinate number and type with equipment supplied).
3. Supply ceiling mounted ducted indoor unit capable of supplying minimal 2,500 BTU/hr. cooling, minimal 7,300 BTU/hr. heating. Must have the ability to circulate internal air to temper outside air. Must be able to provide minimal 8 CFM of ventilation. Outside air inlets as well as recirculation shall be equipped with HEPA type filters. The outside inlet shall have minimum equivalence of a MERV 7 and 11 back to back on the suction side.
4. Supply ceiling mounted ducted indoor unit capable of supplying minimal 3,000 BTU/hr. cooling, minimal 10,000 BTU/hr. heating. Must have the ability to circulate internal air to temper outside air. Must be able to provide minimal 10 CFM of ventilation. Outside air inlets as well as recirculation shall be equipped with HEPA type filters. The outside inlet shall have minimum equivalence of a MERV 7 and 11 back to back on the suction side.
5. 2'X2' recessed LED - Lithonia 2RTL2-33L-EZ1-LP830-E10WLCP or equal.
6. 2'X4' recessed LED - Lithonia 2RTL4-40L-EZ1-LP830-E10WLCP or equal.
7. Outdoor unit to supply 2 zones with the ability to provide minimum of 6,000 BTU/hr cooling (40o-120oF operating range), 18,000 BTU/hr. heating (-5o-80oF operating range). An alternative option is to supply one outside unit with four zones.
8. Existing sprinkler heads to be relocated below drop ceiling.

General (Reference Drawing 2-Office area)

1. Circuit number are indicated in ( ) and associated with Panel “ELC”.
2. General power outlets and switches shall be specification grade 20A Ivory.
3. Occupancy sensors shall be dual technology on the line side of the switches.



EXISTING CONDITIONS		Drawing Title		Project Title		Date			
		BASEMENT FLOOR		WARD		06/2017			
		Approved: Project Manager		Drawing No.	1	Checked	Drawn GT		
Revisions		Professional Seal		Approved: Service Chief		Location		Building Number	
Date				VAMC, NORTHAMPTON MASS.		9			

4nhmnas21\Facilities\1-PROJECT MANAGEMENT\4-Projects AWAITING FUNDS\Renovate BLDG 9 Basement (SATOC) - 631-17-008\Contracting Packet\DWG changes to basement-paul rev.dwg

