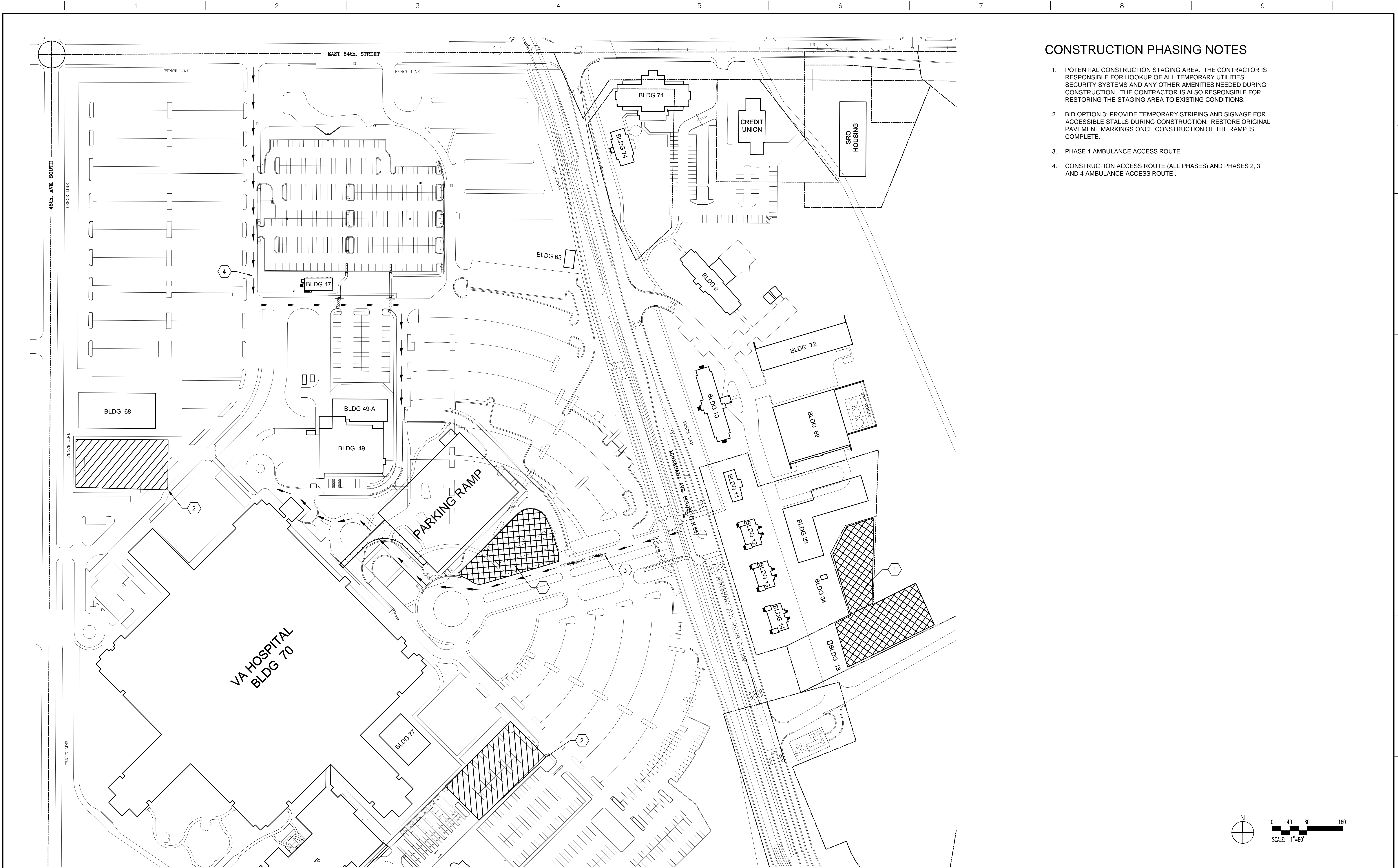


one eighth inch = one foot
one quarter inch = one foot
one half inch = one foot
three eighths inch = one foot
one inch = one foot
one and one half inches = one foot
two inches = one foot
three inches = one foot



CONSTRUCTION PHASING NOTES

- POTENTIAL CONSTRUCTION STAGING AREA. THE CONTRACTOR IS RESPONSIBLE FOR HOOKUP OF ALL TEMPORARY UTILITIES, SECURITY SYSTEMS AND ANY OTHER AMENITIES NEEDED DURING CONSTRUCTION. THE CONTRACTOR IS ALSO RESPONSIBLE FOR RESTORING THE STAGING AREA TO EXISTING CONDITIONS.
- BID OPTION 3: PROVIDE TEMPORARY STRIPING AND SIGNAGE FOR ACCESSIBLE STALLS DURING CONSTRUCTION. RESTORE ORIGINAL PAVEMENT MARKINGS ONCE CONSTRUCTION OF THE RAMP IS COMPLETE.
- PHASE 1 AMBULANCE ACCESS ROUTE
- CONSTRUCTION ACCESS ROUTE (ALL PHASES) AND PHASES 2, 3 AND 4 AMBULANCE ACCESS ROUTE .

CONSTRUCTION DOCUMENTS

		CONSULTANTS:		ARCHITECTS/ENGINEERS:		Drawing Title: PHASED TRAFFIC AND STAGING PLAN		Project Title		Project Number		Office of Construction and Facilities Management	
		SIGNAGE		LEO A DAILY		I hereby certify that this plan, specification, or report was prepared by me or under my direct supervision and that I am duly Licensed Professional Engineer under the laws of the State of Minnesota		CONSTRUCT PARKING RAMP DESIGN		618-820			
		SIGNIA DESIGN		PLANNING ARCHITECTURE ENGINEERING INTERIORS		Signature:		Building Number		78			
		2395 UNIVERSITY AVENUE W., SUITE 316		730 Second Avenue South, Suite 1100		Printed Name: Eric Jeppesen		Location 1 VETERANS DRIVE		Drawing Number		GI-007	
		SAINT PAUL, MN 55114		Minneapolis, MN 55402-2455 USA		Date: 02-24-2012		MINNEAPOLIS, MN 55417		78			
		PHONE: 651-209-6254		Tel 612-338-8741 Fax 612-338-4840		License: 45140				Drawing Number			
		LANDSCAPE		Project #023-10131-000				Date		Checked		Drawn	
		ANDERSON ENGINEERING						02-24-2012		MJH		EJJ	
		13605 1ST AVENUE NORTH, SUITE 100										GI-007	
		PLYMOUTH, MN 55441										Drawing 007 of 116	
		PHONE: 763-412-4000										Department of Veterans Affairs	
Revisions:		Date											