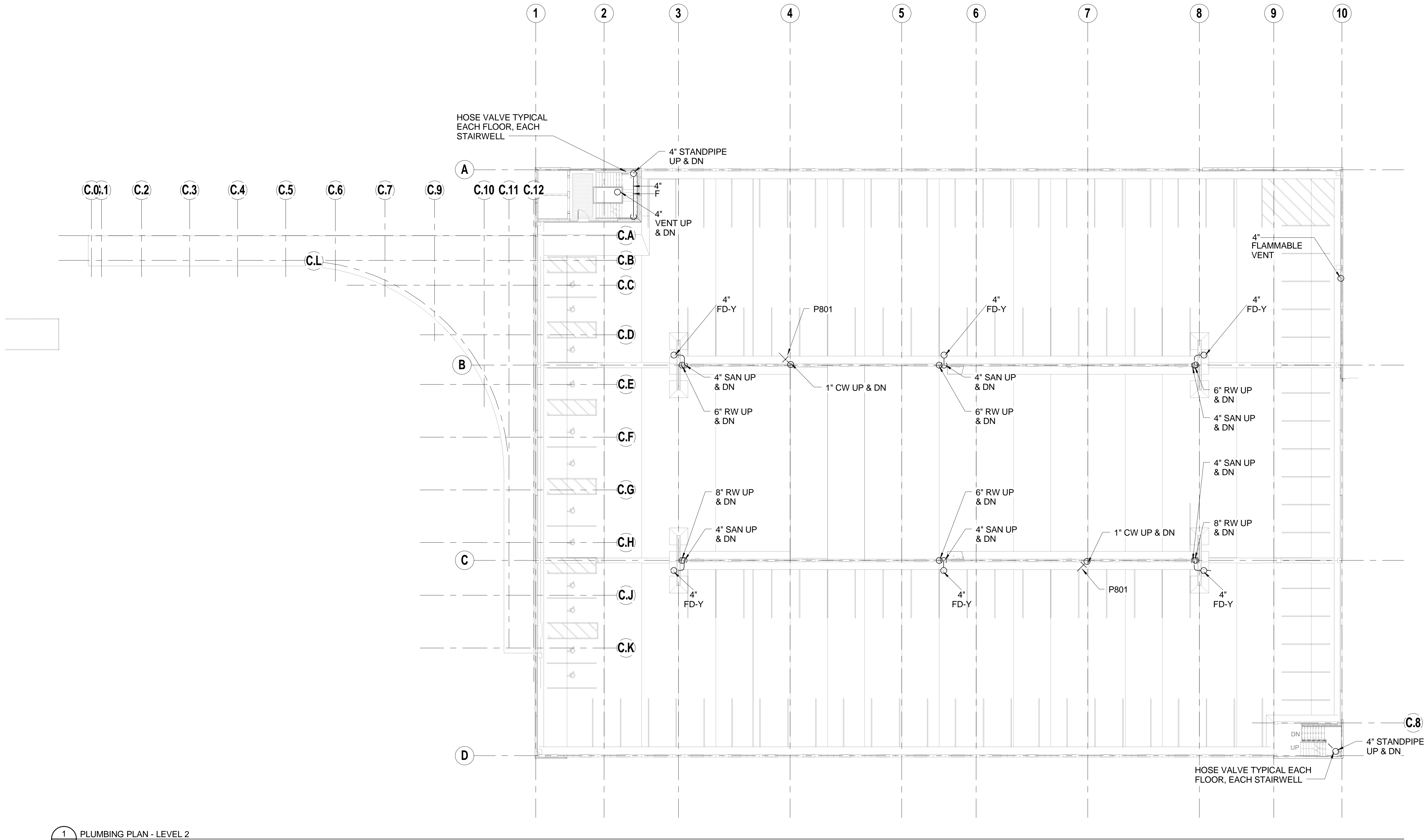


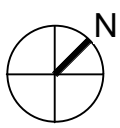
three inches = one foot  
one and one half inches = one foot  
one inch = one foot  
three quarters inch = one foot  
one half inch = one foot  
three eighths inch = one foot  
one quarter inch = one foot  
one eighth inch = one foot

GENERAL PLUMBING NOTES:

1. ALL SANITARY BUILDING DRAIN AND STORM PIPING SHALL BE RUN BELOW THE FLOOR OF THE PLAN ON WHICH IT IS SHOWN, EXCEPT AS NOTED OTHERWISE.
2. WATER AND VENT PIPING SHALL BE RUN TIGHT TO STRUCTURE OF THE PLAN ON WHICH IT IS SHOWN, EXCEPT AS NOTED OTHERWISE.
3. PLUMBING CONTRACTOR TO COORDINATE LOCATIONS OF ALL DRAINS WITH ARCHITECT, STRUCTURAL AND PRECAST CONTRACTOR.
4. PLUMBING FIXTURES LABELED P502, P709, FOR EXAMPLE, REFER TO ITEMS LISTED IN THE SPECIFICATIONS AND THE FIXTURE SCHEDULE ON THE DRAWINGS.
5. INVERT ELEVATIONS ARE REFERENCED TO FINISHED FLOOR ELEVATION OF 100'-0".
6. ALL PLUMBING PIPES SHOWN LEAVING THE BUILDING SHALL CONNECT TO PIPING APPROXIMATELY 5'-0" AWAY FROM THE BUILDING. REFER TO CIVIL DRAWINGS FOR CONT.
7. PLUMBING VENT THRU ROOF SHALL BE LOCATED A MINIMUM OF 2'-0" FROM ANY WALL OR VERTICAL SURFACE. A MINIMUM OF 10'-0" FROM FRESH AIR INTAKES.
8. ALL UTILITY TRENCHES EXITING THE BUILDING ARE TO BE BACKFILLED USING A CLAY TRENCH PLUG PER THE RECOMMENDATIONS OF THE GEOTECHNICAL REPORT.
9. ALL DRAINS SHALL BE TRACTOR GRADE.
10. DOMESTIC COLD WATER LINES FEEDING HOSE BIBBS SHALL BE PITCHED TO DRAIN BACK TO MECHANICAL ROOM. PROVIDE SYSTEM DRAIN AND ISOLATION VALVES IN MECHANICAL ROOM.
11. ALL VERTICAL PIPING SUBJECT TO VEHICULAR DAMAGE SHALL BE PROTECTED. SEE ARCHITECTURAL DRAWINGS FOR DETAILS.



1 PLUMBING PLAN - LEVEL 2  
PL-102 1/16" = 1'-0"



CONSTRUCTION DOCUMENTS

		<div>CONSULTANTS:</div> <div>SIGNAGE</div> <div>SIGNIA DESIGN</div> <div>2395 UNIVERSITY AVENUE W., SUITE 316</div> <div>SANT PAUL, MN 55114</div> <div>PHONE: 651-209-6254</div> <div>LANDSCAPE</div> <div>ANDERSON ENGINEERING</div> <div>13605 1ST AVENUE NORTH, SUITE 100</div> <div>PLYMOUTH, MN 55441</div> <div>PHONE: 763-412-4000</div> <div>Revisions:</div> <div>Date</div>	<div>ARCHITECTS/ENGINEERS:</div> <div>LEO A DALY</div> <div>PLANNING ARCHITECTURAL ENGINEERING INTERIORS</div> <div>EST. 1995</div> <div>730 Second Avenue South, Suite 1100</div> <div>Minneapolis, MN 55402-2455 USA</div> <div>Tel 612-338-8741 Fax 612-338-4840</div> <div>Project #023-10131-000</div>	<div>Drawing Title:</div> <div>PLUMBING AND FIRE PROTECTION PLAN - LEVEL 2</div> <div>I hereby certify that this plan, specification, or report was prepared by me or under my direct supervision and that I am duly licensed Professional Engineer under the laws of the State of Minnesota</div> <div>Signature:</div> <div>Brian L. Benson</div> <div>Printed Name: BRIAN L. BENSON</div> <div>Date: 02-24-2012</div> <div>License: 20397</div>	<div>Project Title</div> <div>CONSTRUCT PARKING RAMP DESIGN</div> <div>Location 1 VETERANS DRIVE</div> <div>MINNEAPOLIS, MN 55417</div> <div>Date 02-24-2012</div> <div>Checked BGB</div> <div>Modeled GSP</div>			<div>Project Number</div> <div>618-820</div> <div>Building Number</div> <div>78</div> <div>Drawing Number</div> <div>PL-102</div> <div>Drawing 082 of 116</div>	<div>Office of Construction and Facilities Management</div> <div>Department of Veterans Affairs</div>
--	--	--	---	--	--	--	--	---	---