



# DEPARTMENT OF VETERANS AFFAIRS

VA LOMA LINDA HEALTHCARE SYSTEM  
11201 BENTON STREET, LOMA LINDA, CA 92357

## DRAIN LINE REPAIR PHASE II



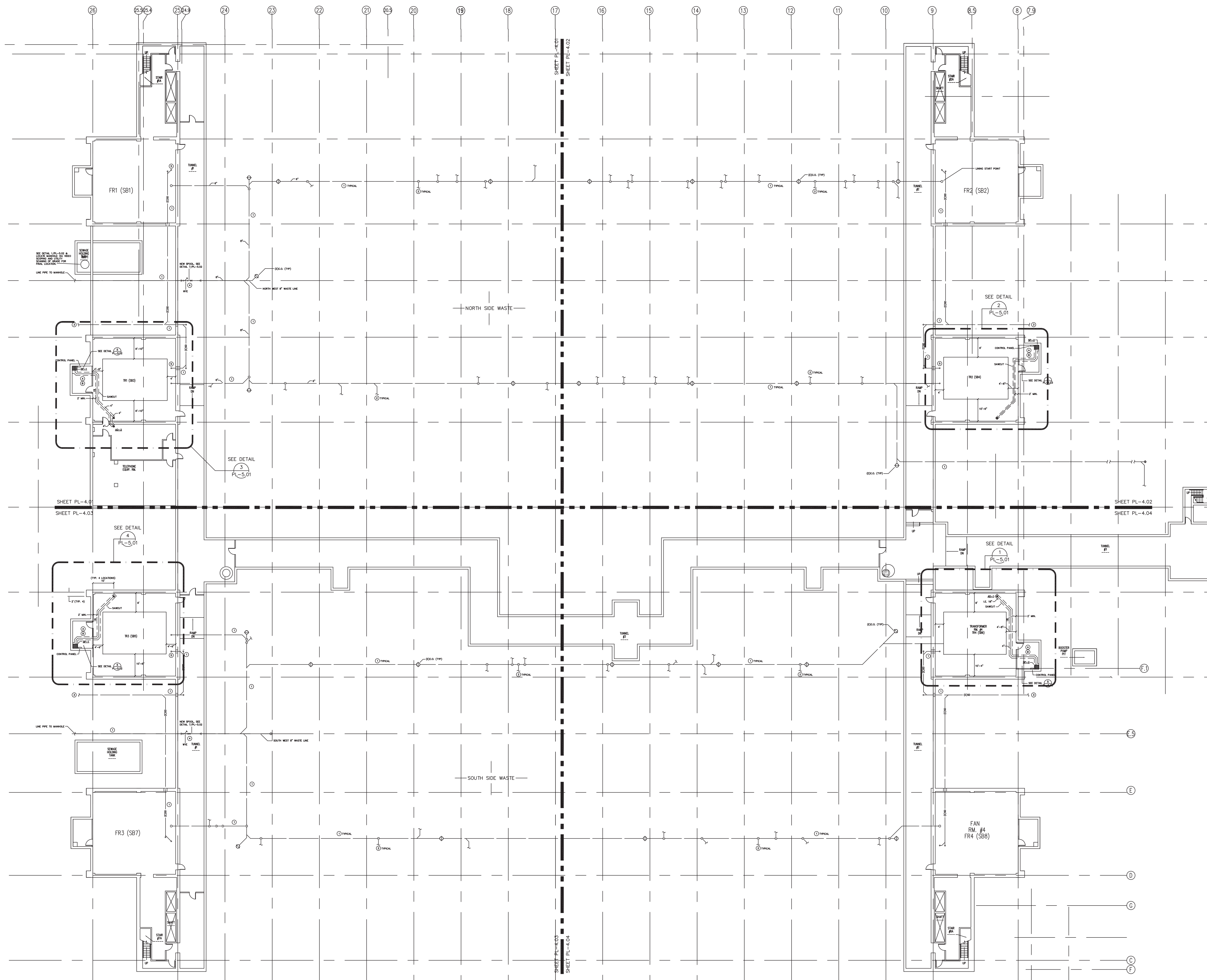
CODE ANALYSIS	SCOPE OF WORK	DRAWING LIST				
ALL INSTALLATION AND TESTS SHALL COMPLY TO BUT NOT LIMITED TO THE FOLLOWING CODES. 2013 Building Standards Administrative Code Part 1, Title 24 2013 California Building Code (CBC) Part 2, Volumes 1 and 2, Title 24 [Based on 2010 International Building Code] 2013 California Electrical Code (CEC) Part 3, Title 24 [Based on 2010 National Electrical Code] 2013 California Mechanical Code (CMC) Part 4, Title 24 [Based on 2010 Uniform Mechanical Code] 2013 California Plumbing Code (CPC) Part 5, Title 24 [Based on 2010 Uniform Plumbing Code] 2013 California Fire Code Part 9, Title 24 [Based on 2010 International Fire Code] 2013 California Referenced Standards Part 12, Title 24 Title 19, Public Safety, State Fire Marshal Regulations 2013 California Energy Code Part 6, Title 24, C.C.R. NFPA 13, Latest Edition – Automatic Sprinkler Systems (Amended by CSFM)	1. WATER JET AND SCOUR 6" AND 8" MAIN WASTE LINES PRIOR TO SCOPING AND LINGING OF LINES IN THE SEQUENCE INDICATED ON PLUMBING PLANS. 2. SCOPE EACH LINE AND VERBALLY INDICATE DEPTH AND DESCRIBE WHAT IS BEING OBSERVED IN PIPING INDICATING WHERE YOU THINK ISSUES MAY ARISE. 3. LINE MAIN 6" AND 8" MAIN WASTE LINE W/EPOXY SATURATED LINER. 4. LINE 6" AND 8" STORM DRAIN LINES W/EPOXY SATURATED LINER. 5. INSTALL TEMPORARY SANITARY WASTE EXTRACTION SYSTEM FOR THE UPPER FLOOR PER THE DRAWINGS. (CONTRACTOR TO DISPOSE OF THIS SYSTEM AS DIRECTED BY THE LOCAL VA PLANT OPS AND PATCH ALL HOLES MADE FOR THE TEMP LINE. 6. INSTALL EMERGENCY DRAINS SYSTEM FOR THE TRANSFORMER ROOM SERVICE BAYS PER THE DRAWINGS. 7. HOLDING TANK ACCESSABILITY, CLEAN, AND CAMERA 8. THE CONTRACTOR IS RESPONSIBLE FOR ALL LOCAL, STATE, FEDERAL PERMITS, FEES, TAXES, LICENSES, & REGULATIONS.	DWG.NO.	DESCRIPTION			
		T-0.01	TITLE SHEET, SITE			
		PL-0.01	GENERAL NOTES, LEGEND, CODES, SCHEDULES, SCOPE, & PROCEDURES			
		PS-1.00	PLUMBING SITE PLAN			
		PL-1.01	STORM DRAIN UNDERFLOOR REMODEL PLAN			
		PL-1.02	TEMPORARY SUMP EJECTOR & PIPING FOR WASTE LINE DIVERSION			
		PL-1.03	FIRST FLOOR LINING SEQUENCE			
		PL-4.01	PARTIAL FIRST FLOOR REMODEL PLAN – NW			
		PL-4.02	PARTIAL FIRST FLOOR REMODEL PLAN – NE			
		PL-4.03	PARTIAL FIRST FLOOR REMODEL PLAN – SW			
		PL-4.04	PARTIAL FIRST FLOOR REMODEL PLAN – SE			
		PL-4.05	TEMPORARY SUMP EJECTOR & PIPING FOR WASTE LINE DIVERSION – NW			
		PL-4.06	TEMPORARY SUMP EJECTOR & PIPING FOR WASTE LINE DIVERSION – NE			
		PL-4.07	TEMPORARY SUMP EJECTOR & PIPING FOR WASTE LINE DIVERSION – SW			
		PL-4.08	TEMPORARY SUMP EJECTOR & PIPING FOR WASTE LINE DIVERSION – SE			
		PL-5.01	DETAILS			
		PL-5.02	DETAILS			
		PL-5.03	DETAILS			
		S-101	GENERAL NOTES, LEGEND, CODES, SCHEDULES, SCOPE, & PROCEDURES			
		S-102	STRUCTURAL DETAILS			
		E-0.01	GENERAL NOTE, SYMBOL LIST, DEMOLITION NOTES, ABBREVIATIONS, SHEET INDEX AND CODE REQUIREMENTS			
		E-0.02	SINGLE LINE DIAGRAM – SERVICE BAYS #3 AND #4 AND CHILLER ROOM			
		E-0.03	SINGLE LINE DIAGRAM – SERVICE BAYS #5 AND #6			
		E-1.01	BASEMENT OVERALL ELECTRICAL PLAN			
		E-1.02	BASEMENT ELECTRICAL REMODEL PLAN – SERVICE BAYS #3 AND #5			
		E-1.03	BASEMENT ELECTRICAL REMODEL PLAN – SERVICE BAYS #4 AND #6 AND FIRST FLOOR ELECTRICAL REMODEL PLAN			
		E-2.01	FIRST FLOOR OVERALL ELECTRICAL PLAN			
		E-2.02	FIRST FLOOR ELECTRICAL REMODEL PLAN – SERVICE BAYS #3, #4, #5 AND #6			
		E-3.01	DETAILS			

Revisions:	Date	CONSULTANTS:	ARCHITECT/ENGINEERS:	Drawing Title	Project Title	Project Number	Building Number	Drawing Number	Office of Construction and Facilities Management
				Approved: Project Director	DRAINLINE REPLACEMENT	60516601	01	T-0.02	
					Location: 11201 Benton St. Loma Linda, CA 92354			Dwg. of -	
					Date: 05/12/2016	Checked: Checker	Drawn: Author		

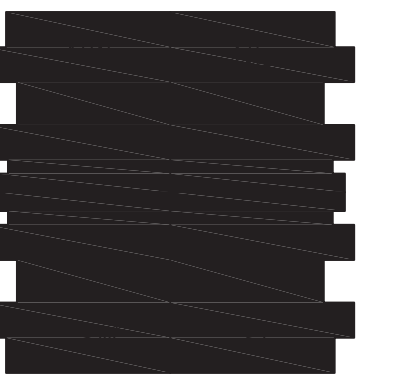








## KEY NOTES

[illegible]

CONSULTANTS:



ARCHITECT/ENGINEERS:



JOB NO: 0216.135.00

Drawing Title	STORM DRAIN & SANITARY WASTE UNDER FLOOR BASEMENT OVERALL PLAN
---------------	--

Approved: Project Director

Project Title	DRAINLINE REPLACEMENT
---------------	-----------------------

Location	11201 Benton St. Loma Linda, CA 92354
----------	--

Date 05/12/2016

Checked	Checker
---------	---------

Drawn
Author

Project Number	60516601
Building Number	01

Drawing Number SD-2314

PL-101

Date of —

Office of  
Construction  
and Facilities  
Management



A

B

C

D

E

F

G

H

I

J

K

2

3

4

5

6

7

8

9

# KEY NOTES

- 1 TEMPORARY ABOVEGROUND WASTE LINE
- 2 REMOVE ALL TEMPORARY PIPE & EQUIPMENT AFTER THE LINING IS COMPLETE & THE WASTE SYSTEM IS IN GOOD OPERATING CONDITION. RESTORE HARD SCOPE TO ORIGINAL CONDITION.
- 3 SEE 9/PL-5.03 FOR PIPE INSTALLATION ACCEPTABLE LOCATION.
- 4 SEE ENLARGED PLANS

A

B

C

D

E

F

G

H

I

J

K

## CONSULTANTS:

## ARCHITECT/ENGINEERS:

Drawing Title  
TEMP SUMP EJECTOR & PIPING  
FOR WASTE DIVERSION OVERALL  
BASEMENT PLAN

Approved: Project Director

Project Title  
DRAINLINE REPLACEMENT

Location: 11201 Benton St.  
Loma Linda, CA 92354

Date  
05/12/2016

Checked  
Checker

Drawn  
Author

Project Number  
60516601

Building Number  
01

Drawing Number SD-2314

PL-102

Dwg. of -

Office of  
Construction  
and Facilities  
Management

Department of  
Veterans Affairs