

BUILDING SCHEDULE

NO.	BUILDINGS
1	HR/MH BUILDING
5	MAIN HOSPITAL
7	UTILITY SHOPS
8	LAUNDRY
9	STATION GARAGE
10	WATER TANK
11	BOILER PLANT
14	FLAGPOLE
15	UNION BUILDING
16	HBPC/LEGAL BUILDING
17	ENGINEERING BUILDING
18	GARAGE
19	GAS METER HOUSE
22	RECREATION SHELTER
24	AUXILIARY POWER UNIT
25	PAD MOUNT TRANSFORMER
27	ELECTRICAL SWITCHGEAR
28	RESEARCH BUILDING
29	PAD MOUNT TRANSFORMER
31	SALT STORAGE TANK
32	PAD MOUNT TRANSFORMER
34	PAD MOUNT TRANSFORMER
35	POWER J-BOX #1
37	A/C PAD - I.C.U.
38	REGIONAL OFFICE BUILDING
39	OXYGEN STORAGE PAD
40,41	PAD MOUNT TRANSFORMER
42,43	PAD MOUNT TRANSFORMER
44	COOLING TOWER PAD
45-47	PAD MOUNT TRANSFORMER
50	GENERATOR BUILDING
51	EMERGENCY MANAGEMENT BUILDING
T11	STORAGE BUILDING
T12	STORAGE BUILDING
T13	STORAGE BUILDING
T15	CHILD DAYCARE

SIoux FALLS, SOUTH DAKOTA
scale 50 0 50 100 150 200 250 feet

DRAWING TITLE: SITE PLAN
SIoux FALLS VA
LOCATION: 2501 WEST 22nd STREET
SIoux FALLS, SOUTH DAKOTA 57105
REVISION: DATE:

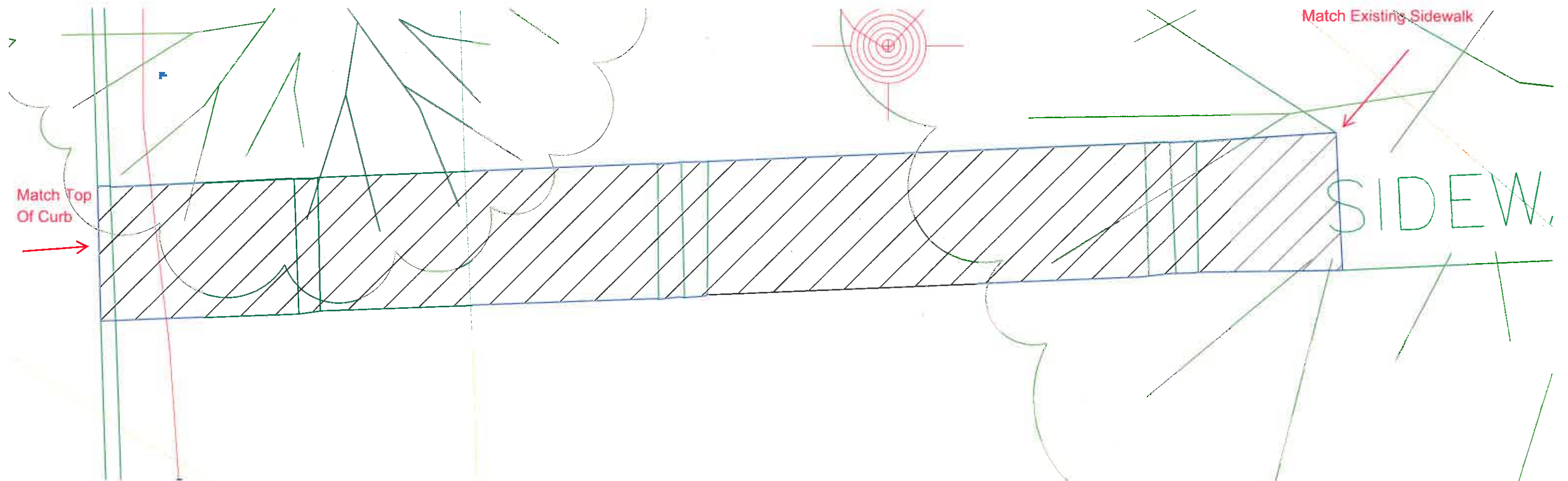
DRAWING NUMBER:
XXX-XXX-XXXX
DWG 1 OF 1
DRAWN BY: JDY
DATE: 5-13-2014



TASK 1

↑
1" = 50'

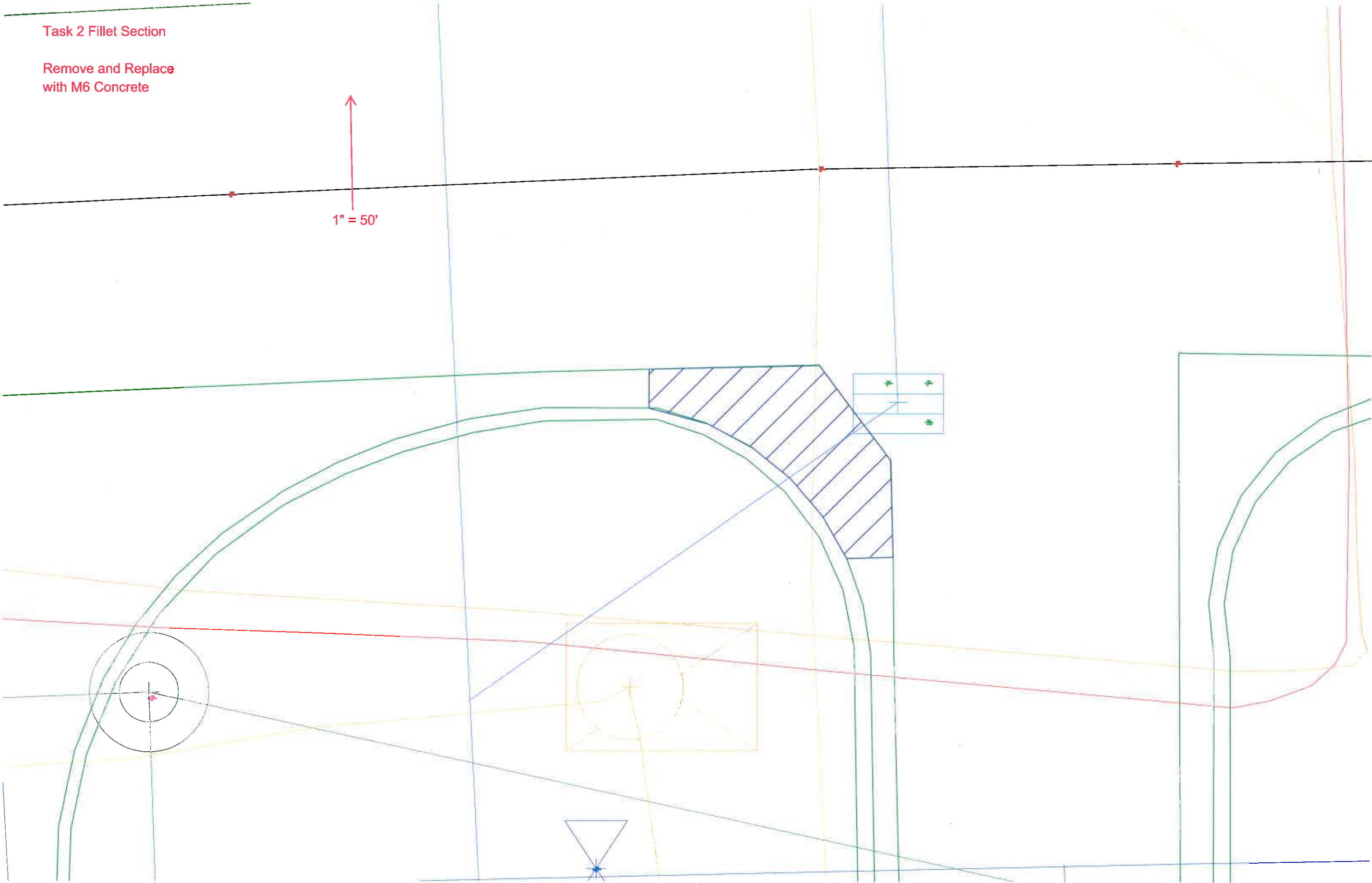
Replace Steps and Sidewalk
6" M6 Concrete over 4" Aggregate base course



Task 2 Fillet Section

Remove and Replace
with M6 Concrete

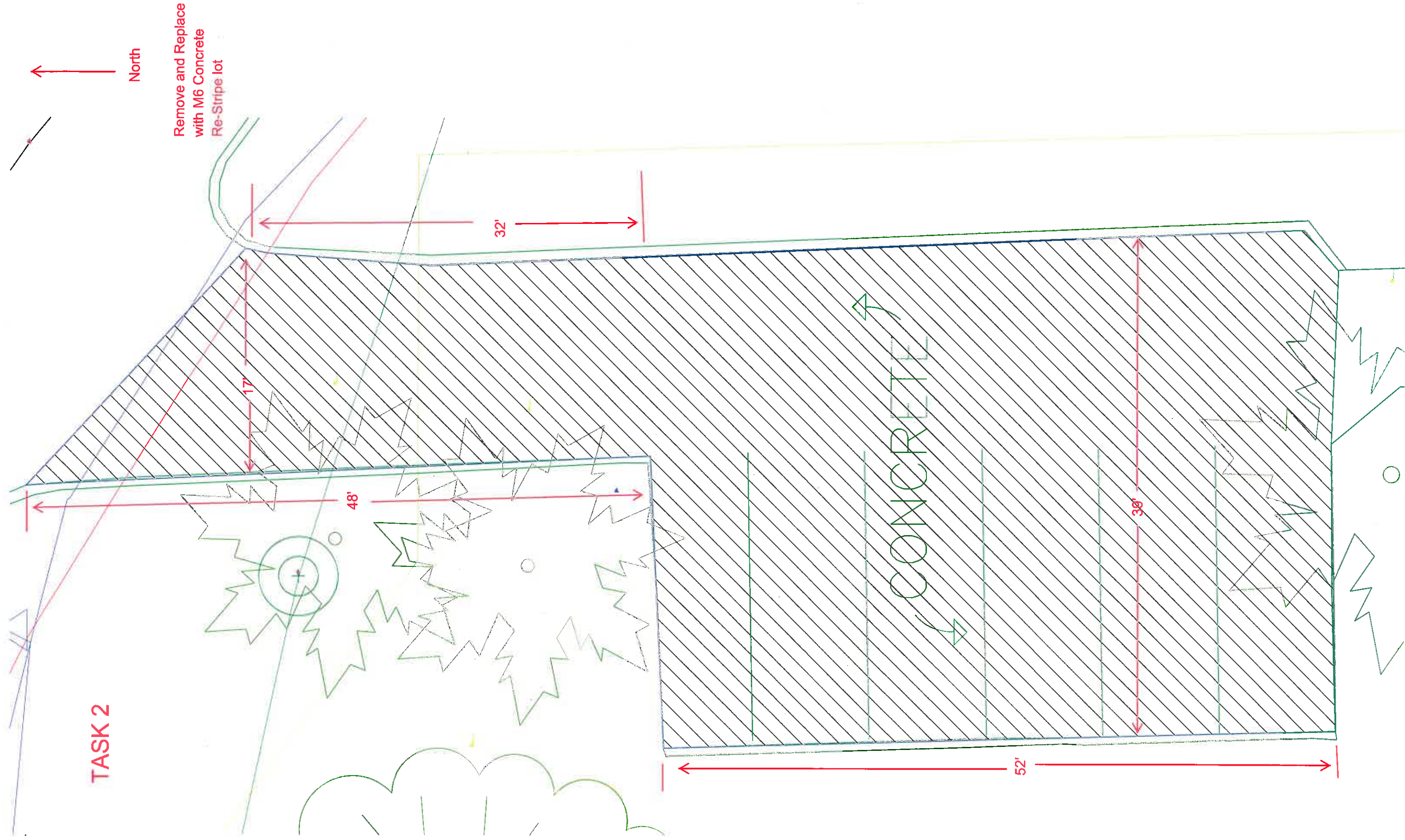
1" = 50'



TASK 2

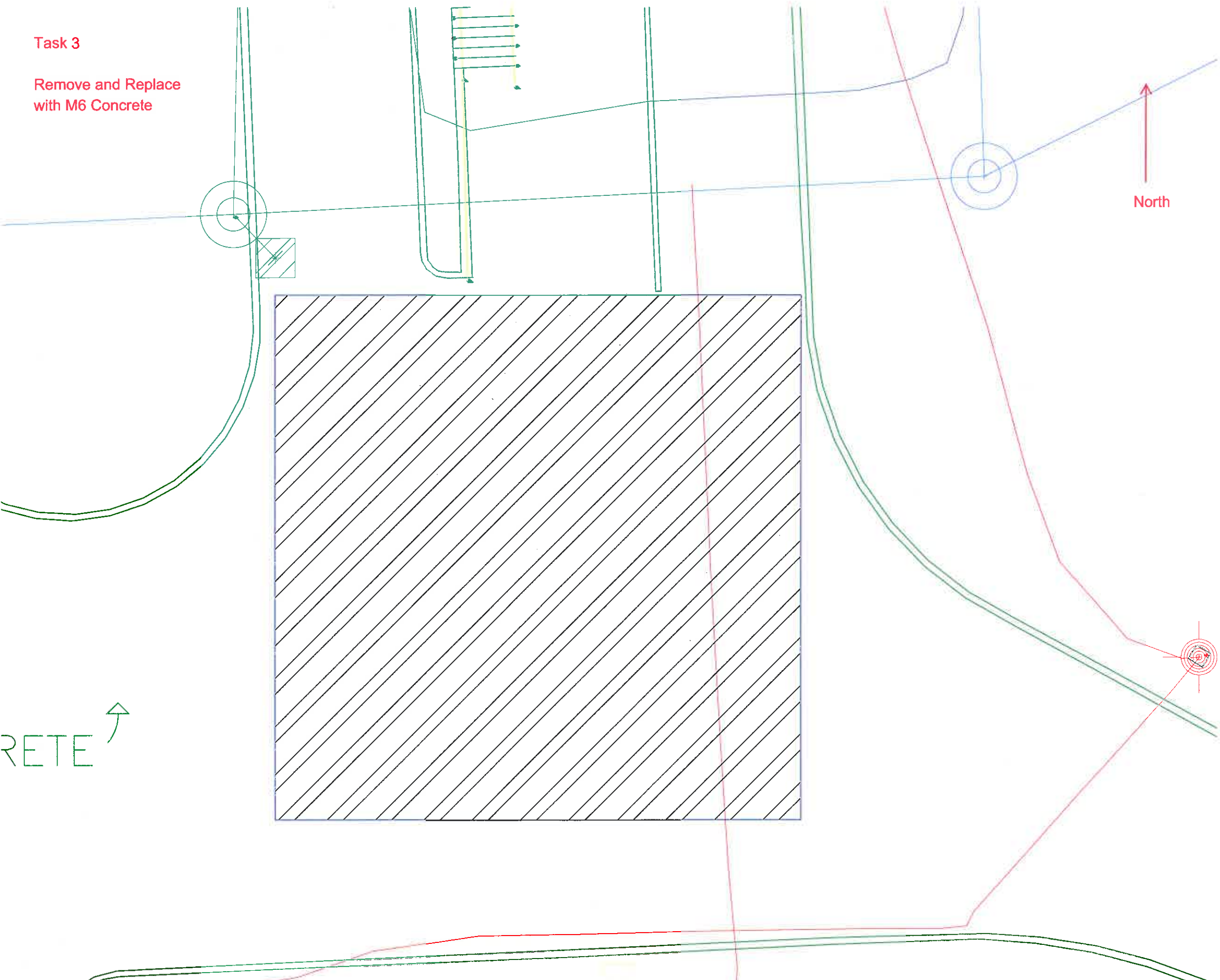
North

Remove and Replace
with M6 Concrete
Re-Stripe lot



Task 3

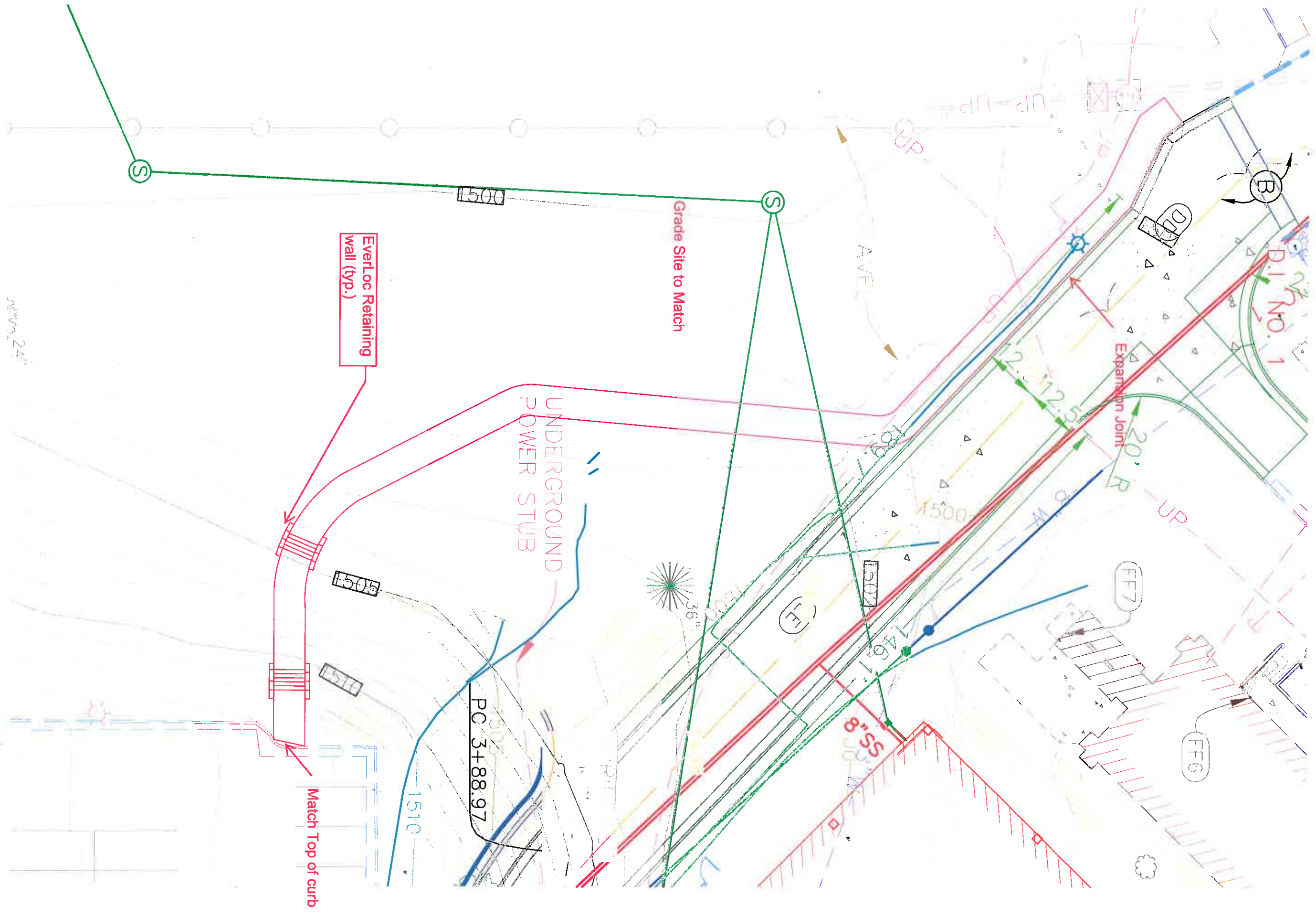
Remove and Replace
with M6 Concrete



RETE ↗

TASK 4

1" = 20'

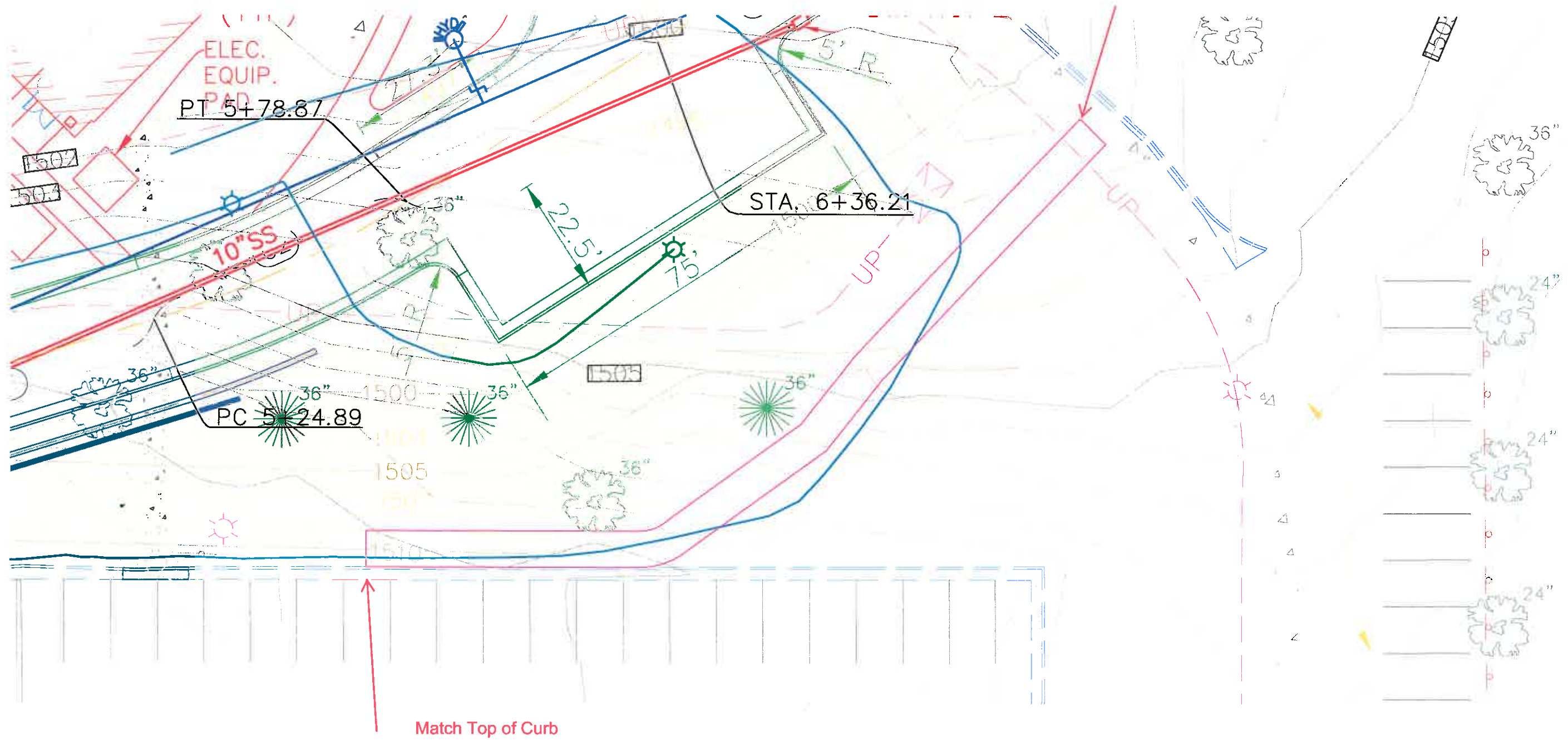


Task 5

6" Sidewalk over 4" Aggregate Base Course

1"= 20'

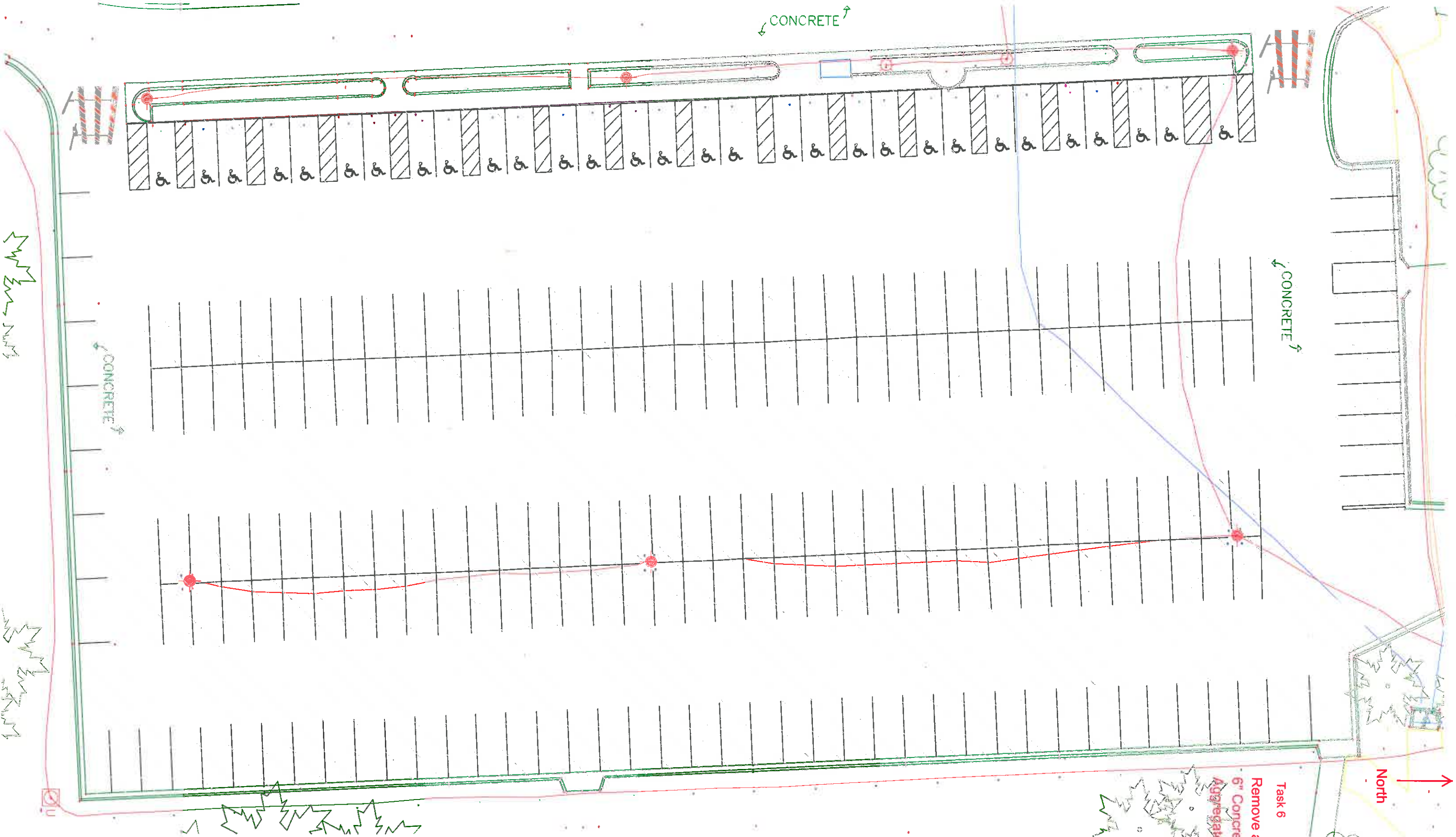
Match Sidewalk

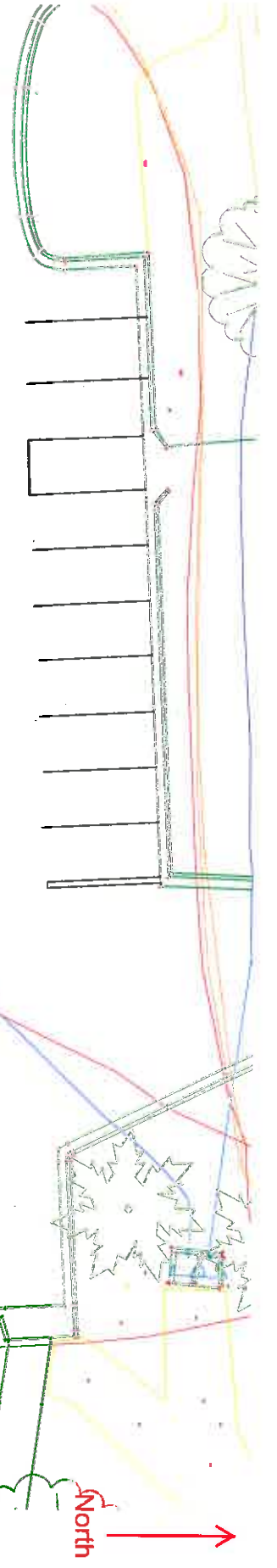


North

Task 6

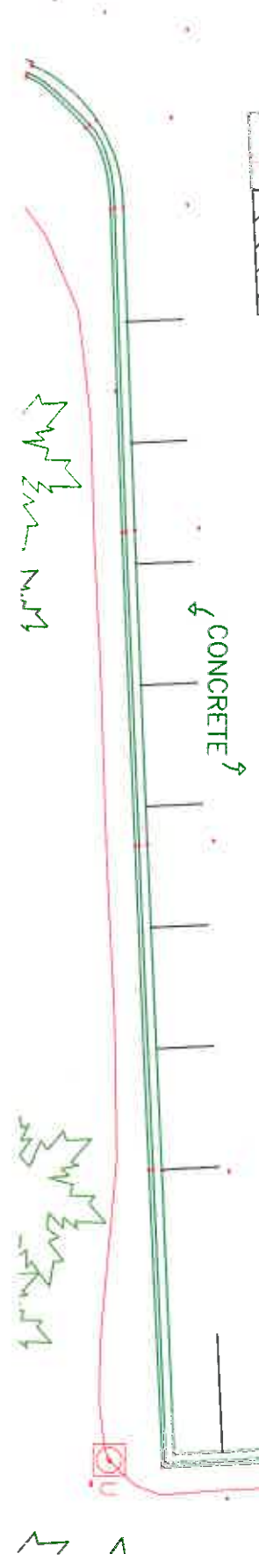
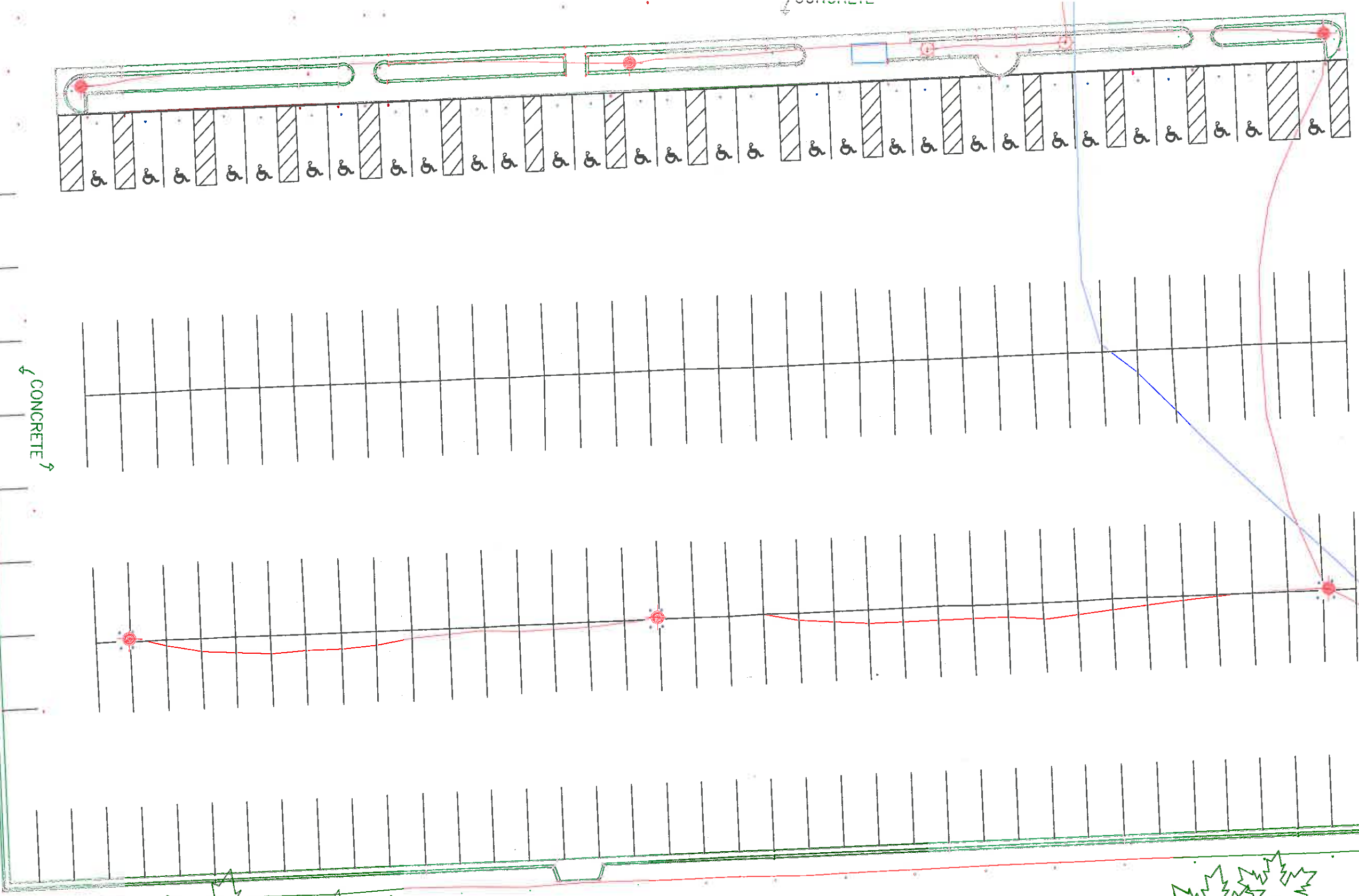
Remove and Replace
6" Concrete over 4"
Aggregate Base Course





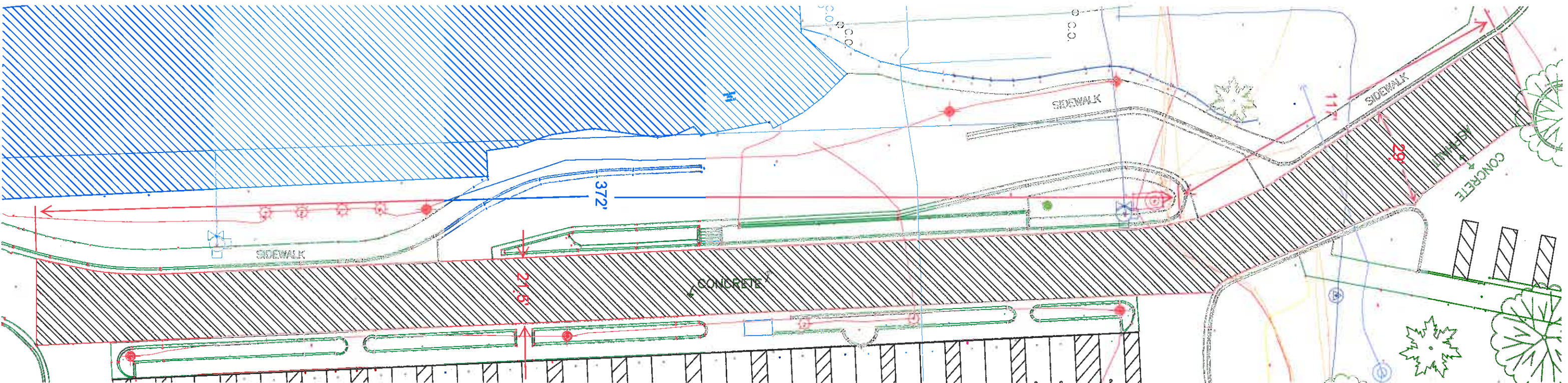
CONCRETE

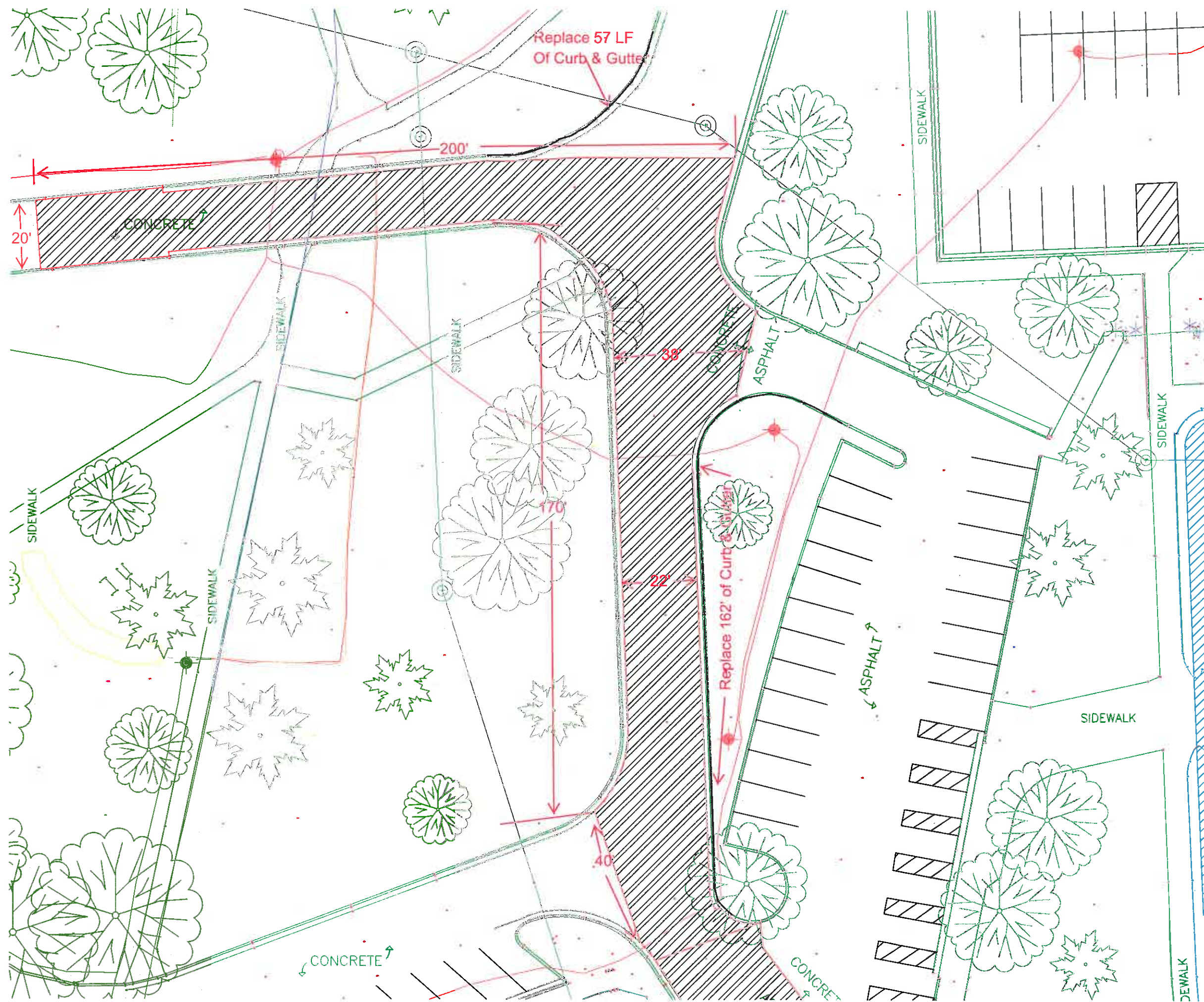
Task 6 Striping Plan



North

Remove and Replace Concrete with 6" M6 Concrete





Task 8
Remove and Replace
Concrete with 6" M6 Concrete