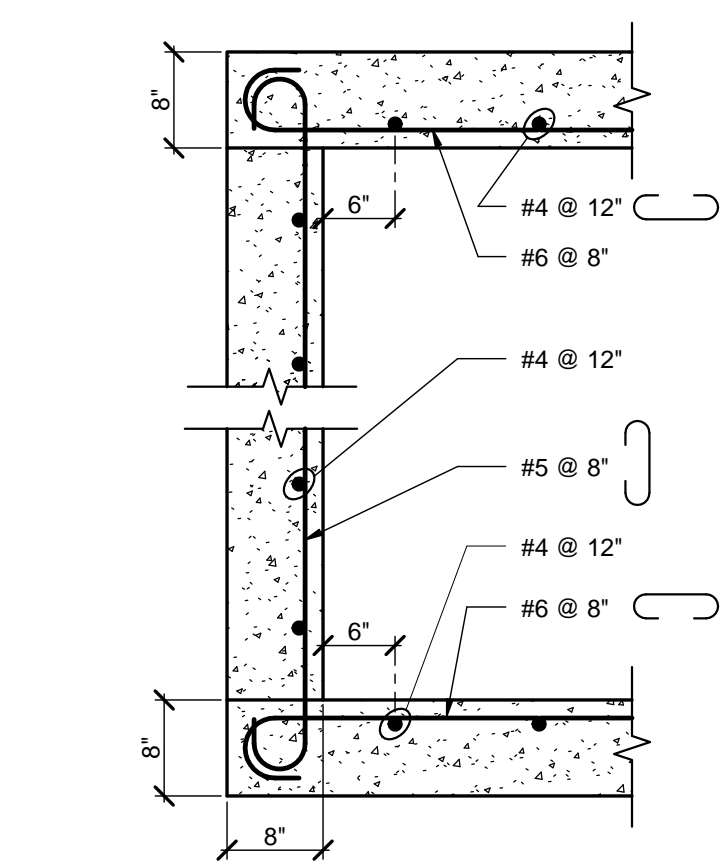
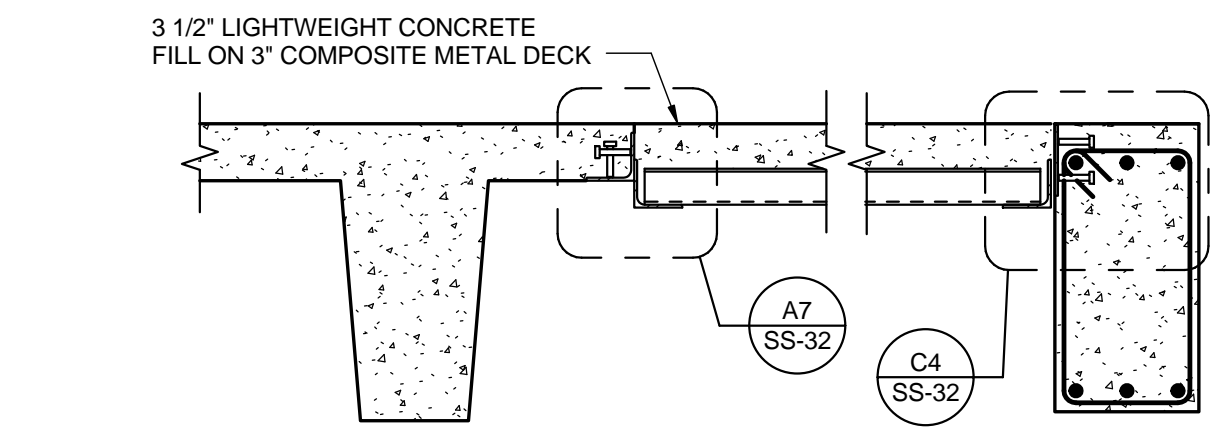
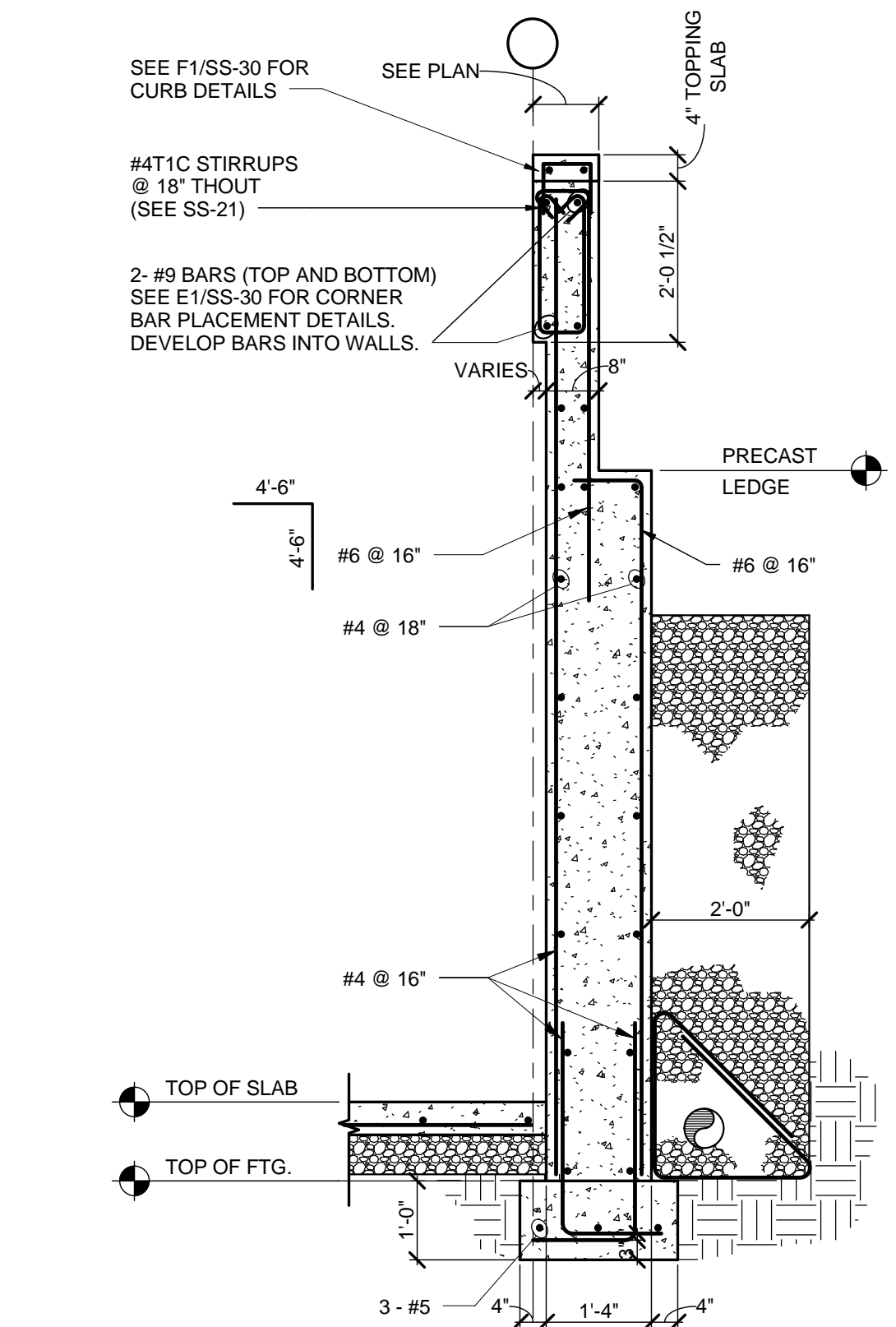
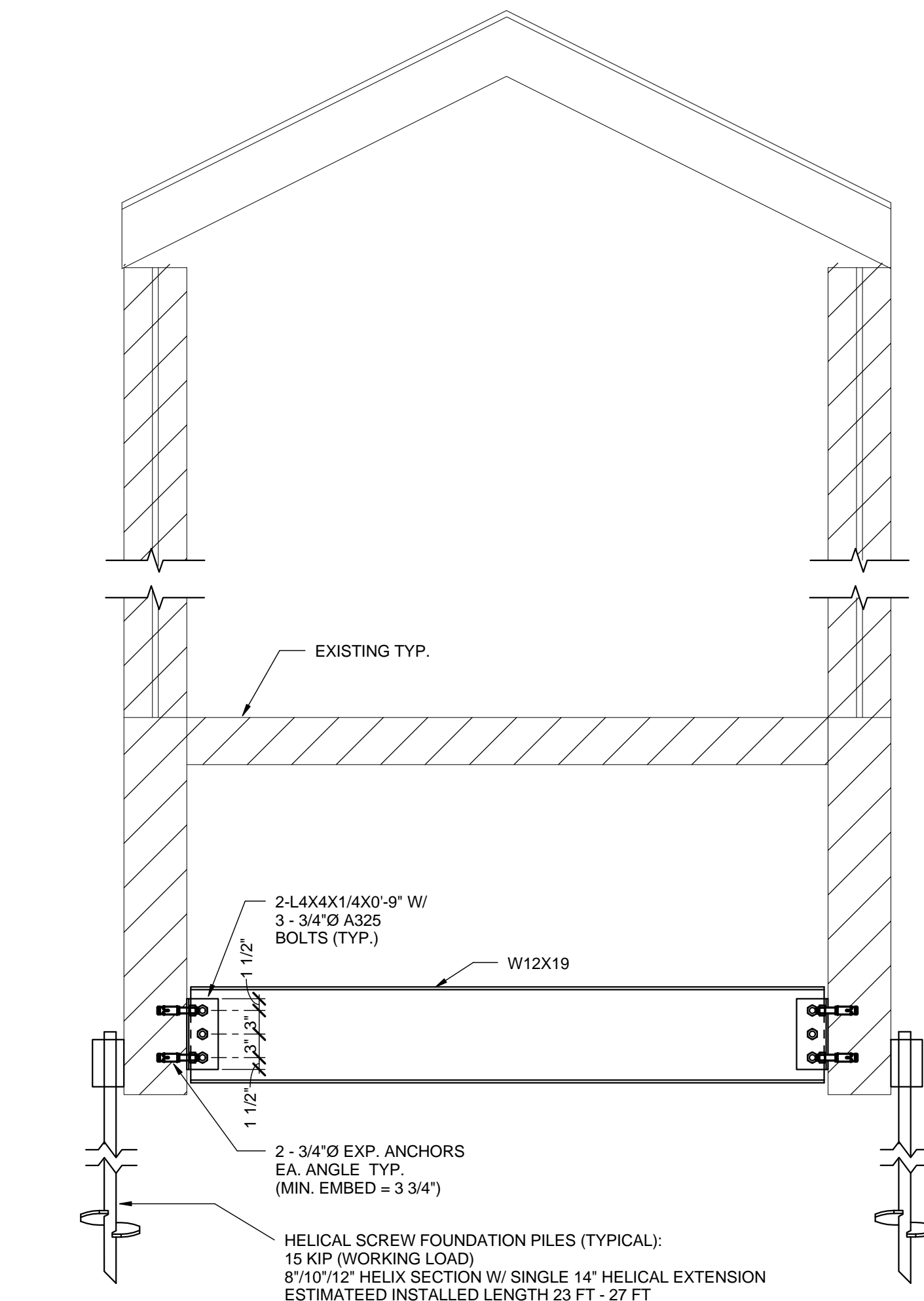
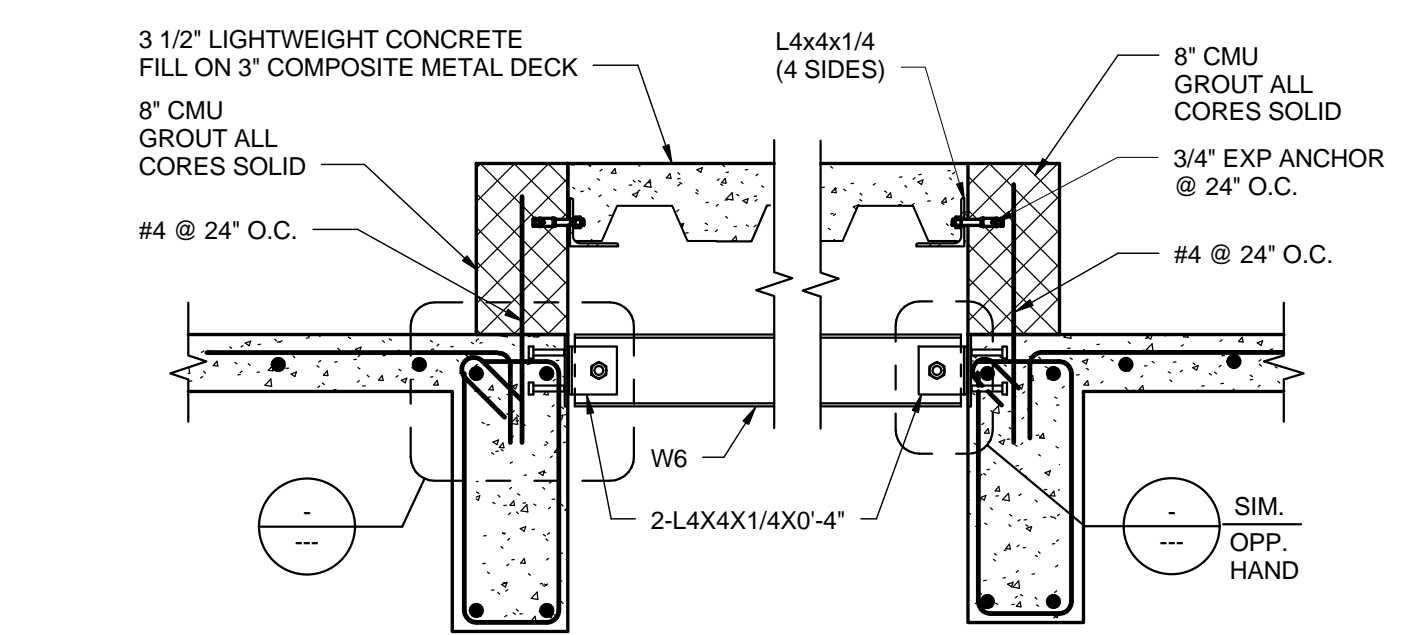
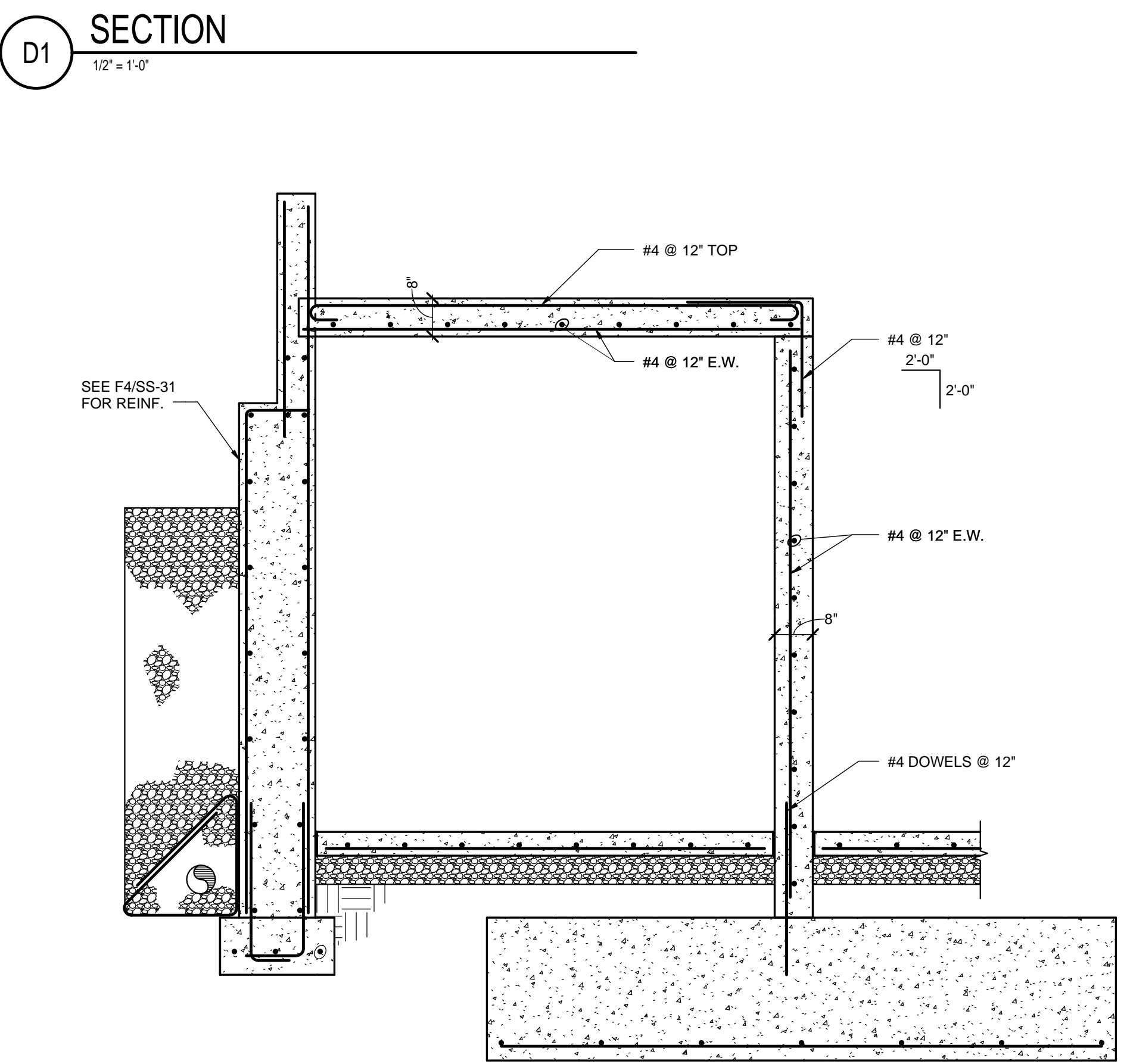
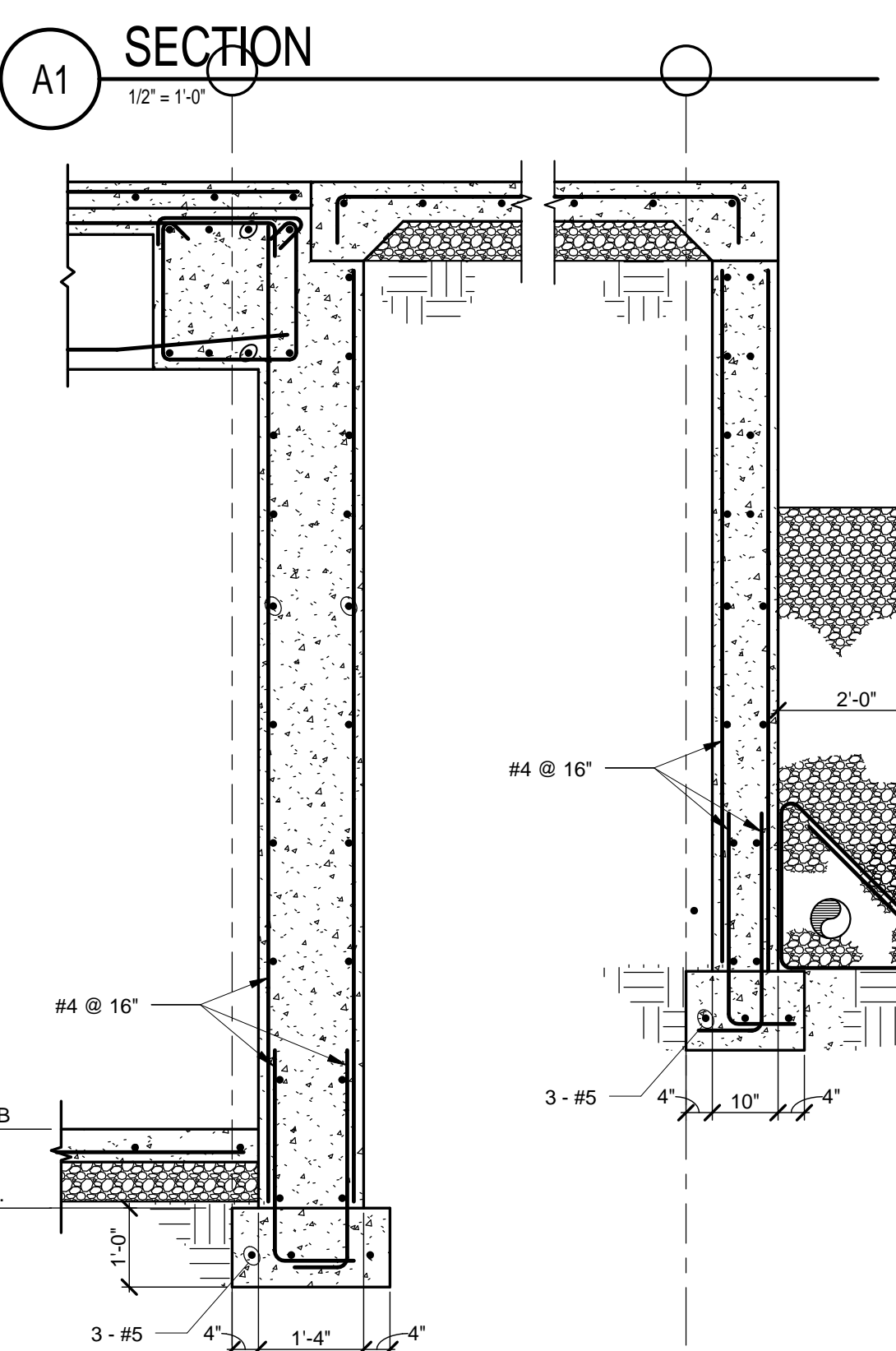
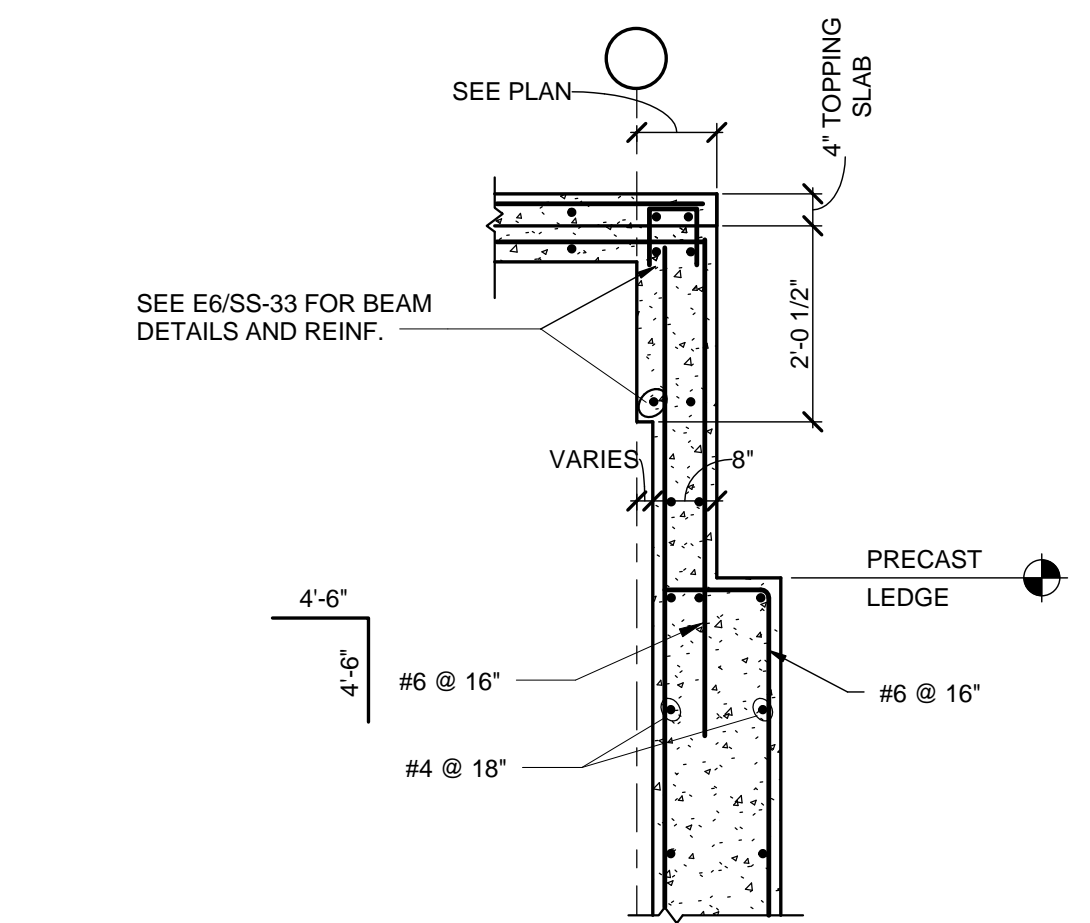


three inches = one foot  
one and one-half inch = one foot  
one inch = one foot  
three-quarters inch = one foot  
one-half inch = one foot  
three-eighths inch = one foot  
one-quarter inch = one foot  
one-eighth inch = one foot

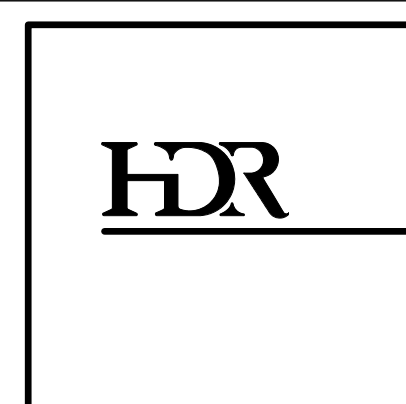
C:\v1\133959-S11-Kitchen-CENTRAL.dwg  
4/11/2012 8:08:10 AM



PROJECT TEAM

ARCHITECTURAL: HDR Architecture, Inc. 444 Cedar St Suite 1900 St Paul, MN 55101 www.hdrinc.com 612-524-0000	MECHANICAL/ELECTRICAL/ PLUMBING: HDR Architecture, Inc. 23 Second Street SW Omaha, NE 68114-4098 www.hdrinc.com 402-399-1000 www.hdrinc.com 507-535-8200	STRUCTURAL: HDR Architecture, Inc. 6404 Indian Hills Drive Suite 100 Omaha, NE 68114-4098 www.hdrinc.com 402-399-1000 http://www.aecm.com 763-412-4000	CIVIL/SURVEYOR: Anderson Engineering of MN 13005 1st Avenue North St. Paul, MN 55103 www.summitfire.com 651-251-1855	FIRE PROTECTION: Summit Fire Consulting 575 Minnesota Ave SE St. Paul, MN 55103 www.summitfire.com 651-251-1855	COMMISSIONING AGENCY: Engineering Design Initiative 1112 North 5th Street Minneapolis, MN 55411 www.ediinc.com 612-343-5965	ENVIRONMENTAL SERVICES: EMR Incorporated 5301 E. River Road Suite 114 Minneapolis, MN 55421 www.emr-inc.com 763-277-5200	FOOD SERVICE DESIGN & CONSULTING: Robert Rippe Associates, Inc. 6117 Blair Creek Drive Suite 100 Minneapolis, MN 55343-9108 www.rra-inc.com 952-933-0313	I HEREBY CERTIFY THAT THIS PLAN, SPECIFICATION, OR REPORT WAS PREPARED BY ME OR UNDER MY DIRECT SUPERVISION AND THAT I AM A DULY LICENSED ENGINEER UNDER THE LAWS OF THE STATE OF MINNESOTA. PRINT NAME: MICHAEL KUHSE SIGNATURE: DATE: DECEMBER 9, 2011 LICENSE #: 26239
---	--	--	---	--	--	--	--	--

ARCHITECTS/ENGINEERS



Drawing Title: CONCRETE SECTIONS AND DETAILS	Project Title: EXPAND PRIMARY AND SPECIALTY CARE/RECONFIGURE SUPPORT SPACE	Project Number: 656-321 / 133959 Building Number: NKB Drawing Number: SS-33
Approved - Project Director	Location: 4801 Veterans Drive, St. Cloud, MN 56303	Date: 11/04/2011
	Checked by: DCS	Drawn: Author

VOLUME I - 100% CONSTRUCTION DOCUMENTS  
FULLY SPRINKLERED

Office of  
Construction  
and Facilities  
Management

Department of  
Veterans Affairs