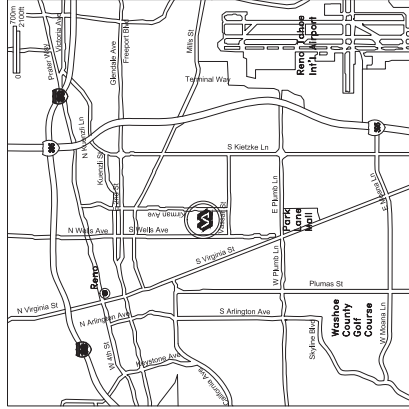


DEPARTMENT OF VETERANS AFFAIRS  
HEALTH CARE SYSTEM

PROJECT # 654-823

CONVERT PROCURED RESIDENTIAL  
LOTS TO SURFACE LEVEL PARKING

V. A. SIERRA NEVADA  
HEALTH CARE SYSTEM  
RENO, NEVADA



VICINITY MAP  
SCALE: NONE



SITE MAP  
SCALE: NONE

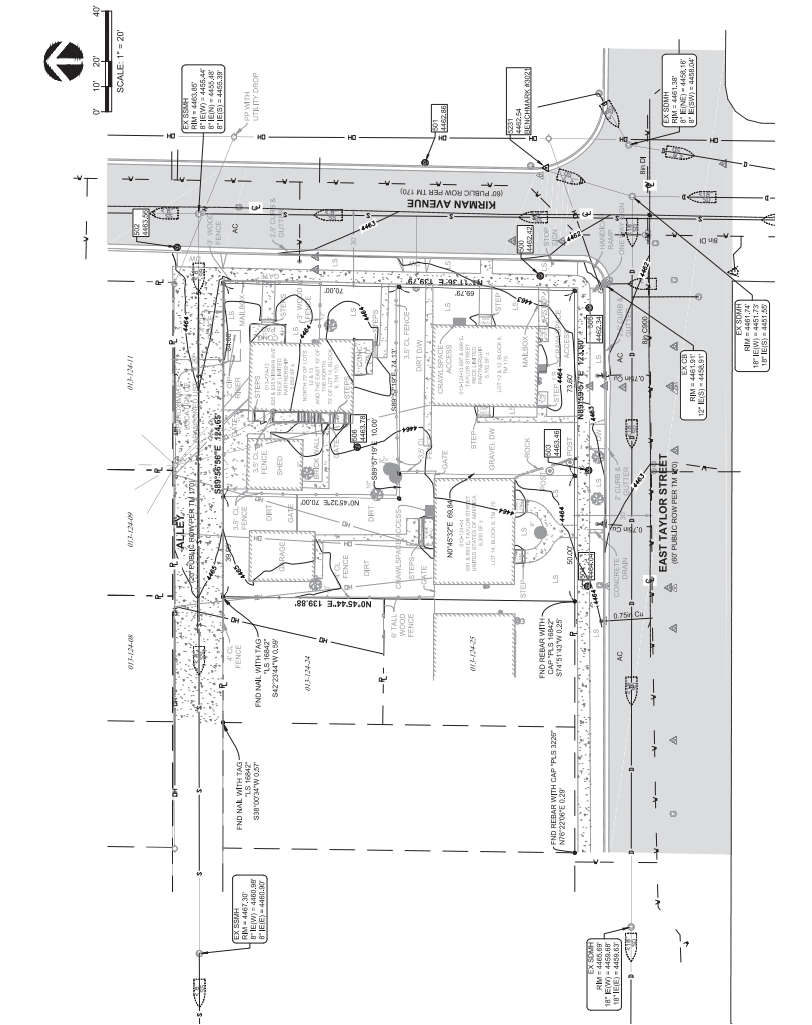
DRAWING INDEX	
SHEET NO.	SHEET TITLES
VS1	VS1 SITE CONDITIONS
VS2	VS2 SITE EROSION PLAN
VS3	VS3 SITE EROSION PLAN
VS4	VS4 SITE EROSION PLAN
VS5	VS5 SITE EROSION PLAN
VS6	VS6 SITE EROSION PLAN
VS7	VS7 SITE EROSION PLAN
VS8	VS8 SITE EROSION PLAN
VS9	VS9 SITE EROSION PLAN
VS10	VS10 SITE EROSION PLAN
VS11	VS11 SITE EROSION PLAN
VS12	VS12 SITE EROSION PLAN
VS13	VS13 SITE EROSION PLAN
VS14	VS14 SITE EROSION PLAN
VS15	VS15 SITE EROSION PLAN
VS16	VS16 SITE EROSION PLAN
VS17	VS17 SITE EROSION PLAN
VS18	VS18 SITE EROSION PLAN
VS19	VS19 SITE EROSION PLAN
VS20	VS20 SITE EROSION PLAN
VS21	VS21 SITE EROSION PLAN
VS22	VS22 SITE EROSION PLAN
VS23	VS23 SITE EROSION PLAN
VS24	VS24 SITE EROSION PLAN
VS25	VS25 SITE EROSION PLAN
VS26	VS26 SITE EROSION PLAN
VS27	VS27 SITE EROSION PLAN
VS28	VS28 SITE EROSION PLAN
VS29	VS29 SITE EROSION PLAN
VS30	VS30 SITE EROSION PLAN
VS31	VS31 SITE EROSION PLAN
VS32	VS32 SITE EROSION PLAN
VS33	VS33 SITE EROSION PLAN
VS34	VS34 SITE EROSION PLAN
VS35	VS35 SITE EROSION PLAN
VS36	VS36 SITE EROSION PLAN
VS37	VS37 SITE EROSION PLAN
VS38	VS38 SITE EROSION PLAN
VS39	VS39 SITE EROSION PLAN
VS40	VS40 SITE EROSION PLAN
VS41	VS41 SITE EROSION PLAN
VS42	VS42 SITE EROSION PLAN
VS43	VS43 SITE EROSION PLAN
VS44	VS44 SITE EROSION PLAN
VS45	VS45 SITE EROSION PLAN
VS46	VS46 SITE EROSION PLAN
VS47	VS47 SITE EROSION PLAN
VS48	VS48 SITE EROSION PLAN
VS49	VS49 SITE EROSION PLAN
VS50	VS50 SITE EROSION PLAN
VS51	VS51 SITE EROSION PLAN
VS52	VS52 SITE EROSION PLAN
VS53	VS53 SITE EROSION PLAN
VS54	VS54 SITE EROSION PLAN
VS55	VS55 SITE EROSION PLAN
VS56	VS56 SITE EROSION PLAN
VS57	VS57 SITE EROSION PLAN
VS58	VS58 SITE EROSION PLAN
VS59	VS59 SITE EROSION PLAN
VS60	VS60 SITE EROSION PLAN
VS61	VS61 SITE EROSION PLAN
VS62	VS62 SITE EROSION PLAN
VS63	VS63 SITE EROSION PLAN
VS64	VS64 SITE EROSION PLAN
VS65	VS65 SITE EROSION PLAN
VS66	VS66 SITE EROSION PLAN
VS67	VS67 SITE EROSION PLAN
VS68	VS68 SITE EROSION PLAN
VS69	VS69 SITE EROSION PLAN
VS70	VS70 SITE EROSION PLAN
VS71	VS71 SITE EROSION PLAN
VS72	VS72 SITE EROSION PLAN
VS73	VS73 SITE EROSION PLAN
VS74	VS74 SITE EROSION PLAN
VS75	VS75 SITE EROSION PLAN
VS76	VS76 SITE EROSION PLAN
VS77	VS77 SITE EROSION PLAN
VS78	VS78 SITE EROSION PLAN
VS79	VS79 SITE EROSION PLAN
VS80	VS80 SITE EROSION PLAN
VS81	VS81 SITE EROSION PLAN
VS82	VS82 SITE EROSION PLAN
VS83	VS83 SITE EROSION PLAN
VS84	VS84 SITE EROSION PLAN
VS85	VS85 SITE EROSION PLAN
VS86	VS86 SITE EROSION PLAN
VS87	VS87 SITE EROSION PLAN
VS88	VS88 SITE EROSION PLAN
VS89	VS89 SITE EROSION PLAN
VS90	VS90 SITE EROSION PLAN
VS91	VS91 SITE EROSION PLAN
VS92	VS92 SITE EROSION PLAN
VS93	VS93 SITE EROSION PLAN
VS94	VS94 SITE EROSION PLAN
VS95	VS95 SITE EROSION PLAN
VS96	VS96 SITE EROSION PLAN
VS97	VS97 SITE EROSION PLAN
VS98	VS98 SITE EROSION PLAN
VS99	VS99 SITE EROSION PLAN
VS100	VS100 SITE EROSION PLAN



Know what's below.  
Call before you dig.

FINAL CD SUBMITTAL REV 1

CONSULTANTS:		ARCHITECT/ENGINEERS:		DRAWING TITLE		PROJECT TITLE		PROJECT NUMBER		OFFICE OF CONSTRUCTION MANAGEMENT	
PBS Engineering and Environmental Inc. 1001 S. Virginia St. Reno, NV 89502 775.784.1234 www.pbsinc.com		K. J. & J. L. Engineering, Inc. 1001 S. Virginia St. Reno, NV 89502 775.784.1234 www.kjandjl.com		TITLE SHEET		CONVERT PROCURED RESIDENTIAL LOTS TO SURFACE LEVEL PARKING		654-823		Office of Construction Management	
Revision:		Revision:		Drawing Number		Location		Drawing Number		Office	
1		1		1		1		1		1	
2		2		2		2		2		2	
3		3		3		3		3		3	
4		4		4		4		4		4	
5		5		5		5		5		5	
6		6		6		6		6		6	
7		7		7		7		7		7	
8		8		8		8		8		8	
9		9		9		9		9		9	
10		10		10		10		10		10	
11		11		11		11		11		11	
12		12		12		12		12		12	
13		13		13		13		13		13	
14		14		14		14		14		14	
15		15		15		15		15		15	
16		16		16		16		16		16	
17		17		17		17		17		17	
18		18		18		18		18		18	
19		19		19		19		19		19	
20		20		20		20		20		20	
21		21		21		21		21		21	
22		22		22		22		22		22	
23		23		23		23		23		23	
24		24		24		24		24		24	
25		25		25		25		25		25	
26		26		26		26		26		26	
27		27		27		27		27		27	
28		28		28		28		28		28	
29		29		29		29		29		29	
30		30		30		30		30		30	
31		31		31		31		31		31	
32		32		32		32		32		32	
33		33		33		33		33		33	
34		34		34		34		34		34	
35		35		35		35		35		35	
36		36		36		36		36		36	
37		37		37		37		37		37	
38		38		38		38		38		38	
39		39		39		39		39		39	
40		40		40		40		40		40	
41		41		41		41		41		41	
42		42		42		42		42		42	
43		43		43		43		43		43	
44		44		44		44		44		44	
45		45		45		45		45		45	
46		46		46		46		46		46	
47		47		47		47		47		47	
48		48		48		48		48		48	
49		49		49		49		49		49	
50		50		50		50		50		50	
51		51		51		51		51		51	
52		52		52		52		52		52	
53		53		53		53		53		53	
54		54		54		54		54		54	
55		55		55		55		55		55	
56		56		56		56		56		56	
57		57		57		57		57		57	
58		58		58		58		58		58	
59		59		59		59		59		59	
60		60		60		60		60		60	
61		61		61		61		61		61	
62		62		62		62		62		62	
63		63		63		63		63		63	
64		64		64		64		64		64	
65		65		65		65		65		65	
66		66		66		66		66		66	
67		67		67		67		67		67	
68		68		68		68		68		68	
69		69		69		69		69		69	
70		70		70		70		70		70	
71		71		71		71		71		71	
72		72		72		72		72		72	
73		73		73		73		73		73	
74		74		74		74		74		74	
75		75		75		75		75		75	
76		76		76		76		76		76	
77		77		77		77		77		77	
78		78		78		78		78		78	
79		79		79		79		79		79	
80		80		80		80		80		80	
81		81		81		81		81		81	
82		82		82		82		82		82	
83		83		83		83		83		83	
84		84		84		84		84		84	
85		85		85		85		85		85	
86		86		86		86		86		86	
87		87		87		87		87		87	
88		88		88		88		88		88	
89		89		89		89		89		89	
90		90		90		90		90		90	
91		91		91		91		91		91	
92		92		92		92		92		92	
93		93		93		93		93		93	
94		94		94		94		94		94	
95		95		95		95		95		95	
96		96		96		96		96		96	
97		97		97		97		97		97	
98		98		98		98		98		98	
99		99		99		99		99		99	
100		100		100		100		100		100	



THE BASIS OF ELEVATIONS FOR THIS SURVEY IS THE NORTH AMERICAN VERTICAL DATUM OF 1988 (NAVOD88) BASED UPON THE CITY OF RENO BENCHMARK SYSTEM.

THE BASIS OF BEARINGS FOR THIS SURVEY IS NEVADA STATE PLANE, WEST ZONE NAD83(94) BASED ON REAL TIME KINEMATIC (RTK) GPS OBSERVATIONS UTILIZING CORRECTIONS FROM THE NORTHERN NEVADA COOPERATIVE REAL TIME NETWORK. COORDINATES AND DISTANCES HEREON ARE AT GROUND LEVEL BASED ON A COMBINED GRID TO GROUND FACTOR OF 1.000197036.

APN: 013-124-14  
AREA: 6,300 SQ. FT.  
ADDRESS: 691 & 693 EAST TAVOL STREET RENO NV 89502

APN: 013-124-13  
AREA: 5.152 SQ. FT.  
ADDRESS: 607 A 600 EAST TAMI OB STREET RENO NV 89502

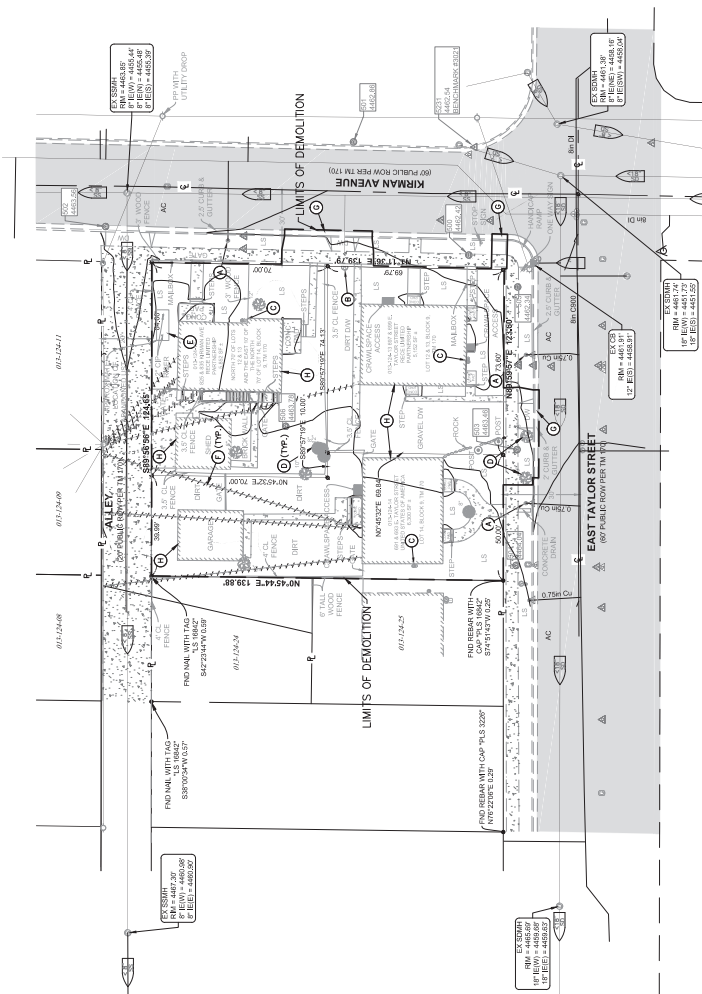
APN: 013-124-12  
AREA: 5,852 SQ. FT.  
ADDRESS: 825 & 835 KIRMAN AVENUE RENO NV 89502

CFA, INC.  
1150 CORPORATE BLVD.  
RENO, NV 89502  
(775) 856-1150  
WWW.CFARENO.COM

Know what's below.  
Call before you dig.

Subject Number

[illegible]



- 6 CAP AND DISCONNECT WATER SERVICE OUTSIDE CITY OF RENO  
AND REMOVE UNDERGROUND WATER PIPING WITH EDUCATION LIMITS
- 7 CAP AND DISCONNECT SANITARY SEWER SERVICE OUTSIDE CITY OF RENO  
SEWER PIPING TO ALL STRUCTURES WITH EDUCATION LIMITS
- 8 GAS SERVICE REMAINING PERMS TO BE DISCONNECTED AND REMOVED BY  
AN ENERGY REMODEL TEAM FOLLOWING COMPLETION
- 9 REMOVE TREE AND ROOF FILL, WALL, AND COMPACT VOIDS PER  
SPECIFICATIONS
- 10 LOCATE AND REMOVE UNDERGROUND TANK PIPING AND
- 11 OVERHEAD UTILITIES TO BE DISCONNECTED BY AN ENERGY  
REMODEL TEAM FOLLOWING COMPLETION OF AN ENERGY REMODEL  
TEAM'S WORK
- 12 SANDFILL AND REMOVE CITY OF RENO SIDEWALK, ASPHALT, CURB  
AND SIDEWALK CROSS DRAINAGE TO BUILD DRIVE APPROACHES AND
- 13 REMOVE FOUNDATIONS, FOOTINGS AND BASEMENT WALLS, BAYOFFEL

[illegible]

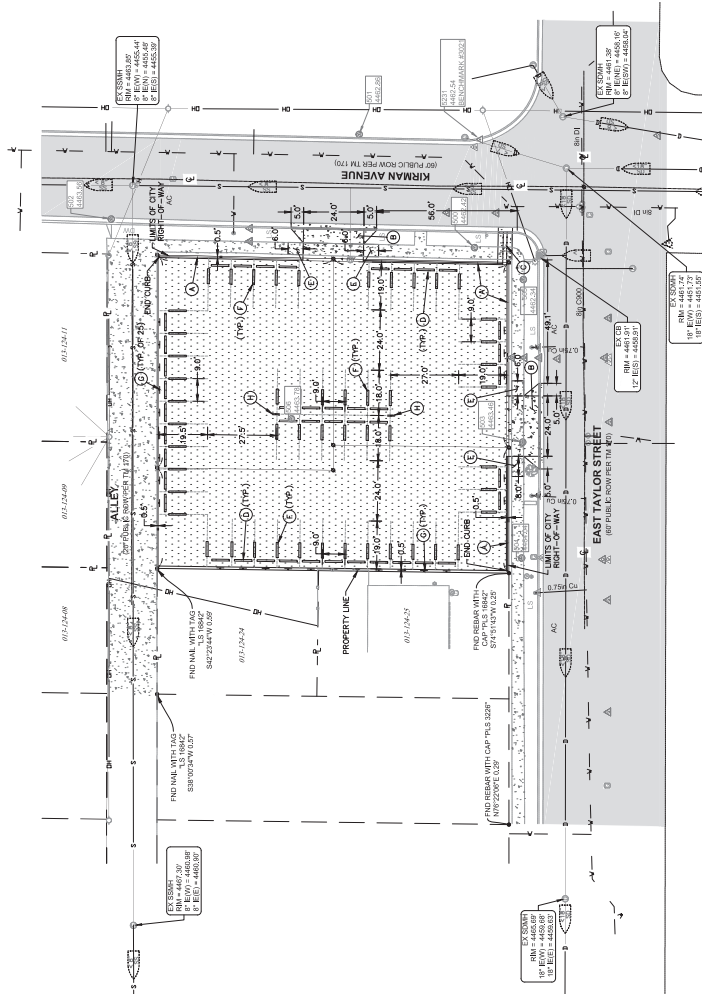
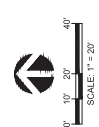
☐ LIMITS OF DEMOLITION  
☐ ABOVE GROUND ELECTRICAL UTILITIES TO BE REMOVED, COORDINATE WITH NV ENERGY



FINAL CD SUBMITTAL REV 1

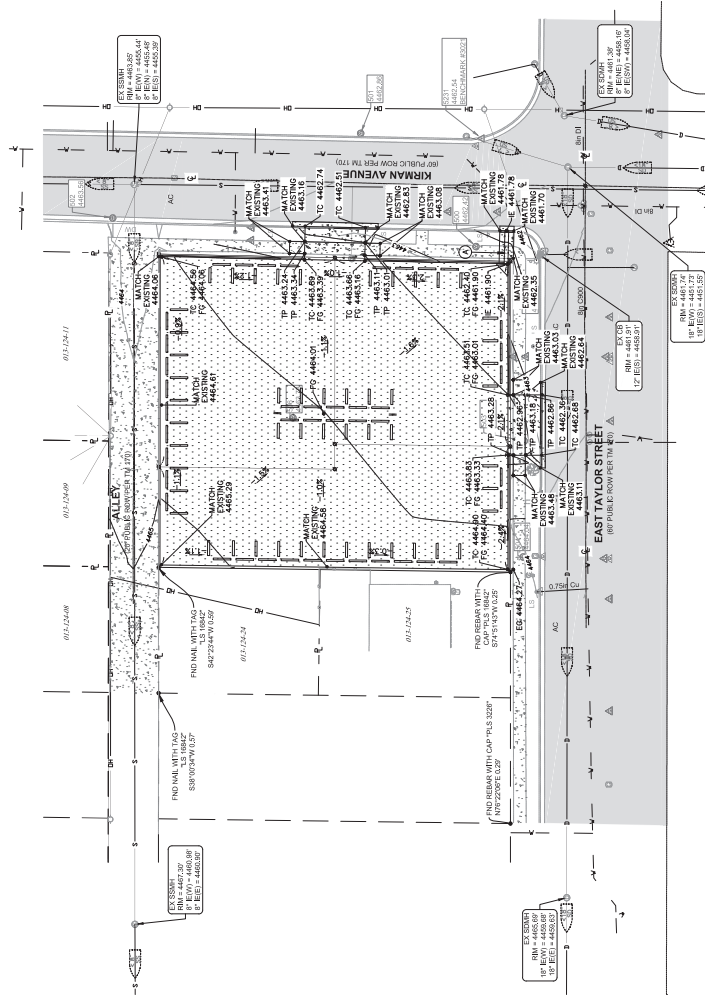
[illegible]

- SITE DIMENSION KEYNOTES**
- ① TYPE 2 P.C.C. MEDIAN CURB PER CITY OF RENO STANDARD R-10/DT1
  - ② P.C.C. DRIVEWAY APRON PER CITY OF RENO STANDARD R-11A/DT1
  - ③ 18" WIDE SIDEWALK CROSS DRAIN PER CITY OF RENO STANDARD R-105/DT1
  - ④ RECYCLED RUBBER WHEELSTOP PER DETAIL 1/DT1 (43 TOTAL)
  - ⑤ CONCRETE SIDEWALK PER CITY OF RENO STANDARD R104A-1/DT1
  - ⑥ PLASTIC STALL DIVIDER PER DETAIL 3/DT1 (51 TOTAL)
  - ⑦ "TYPE B" GOVT. VEHICLE PARKING ONLY SIGN PER DETAIL 4/DT1 (25 TOTAL)
  - ⑧ DOUBLE SIDED "TYPE A" NO PARKING SIGN PER DETAIL 2/DT1 (2 TOTAL)
  - ⑨ CRUSHED ROCK PARKING SURFACE PER DETAIL 2/DT1
  - ⑩ UNITS OF CONCRETE
- SITE DIMENSION NOTES**
1. ALL DIMENSIONS SHOWN FOR LAYOUT ONLY. ROCK SURFACE WILL NOT BE SHOWN.
  2. ALL DIMENSIONS SHOWN FOR LAYOUT ONLY. ROCK SURFACE WILL NOT BE SHOWN.
  3. CURB LINE OF CURB AND CHARGED ROCK PARKING SURFACE SHALL BE IN ACCORDANCE WITH CITY OF RENO RIGHT-OF-WAY AND ALIEN WASTEC COMPANY SPECIFICATIONS.
  4. WORK WITHIN CITY OF RENO RIGHT-OF-WAY SHALL BE PERFORMED IN ACCORDANCE WITH CITY OF RENO SPECIFICATIONS, AND COORDINATED WITH CITY OF RENO.



FINAL CD SUBMITTAL REV 1

CONSULTANTS		ARCHITECT/ENGINEERS		DRAWING TITLE		PROJECT TITLE		OFFICE OF CONSTRUCTION MANAGEMENT	
				<b>SITE DIMENSION PLAN</b>		<b>CONVERT PROCURED RESIDENTIAL LOTS TO SURFACE LEVEL PARKING</b>		<b>Office of Construction Management</b>	
Allen Wastec Company, Inc. 101248 101249 101248 101249		Kirman Avenue Engineering, Inc. 101248 101249 101248 101249		Location: <b>WASTEC CENTER</b> Date: <b>4/1/2018</b>		Project Number: <b>654-923</b> Building Number: <b>CS1</b>		Drawing Number: <b>CS1</b> Date: <b>4/1/19</b>	
101248 101249 101248 101249		101248 101249 101248 101249		Checked: <b>AW</b> Drawn: <b>AW</b>		Project Title: <b>CONVERT PROCURED RESIDENTIAL LOTS TO SURFACE LEVEL PARKING</b>		Office of Construction Management	



① 18" WIDE GRENWALL CROSS GRAIN DES CITY OF BENO STANDARD B-106 M/TN

LIMITS OF CRUSHED ROCK PARKING SURFACE

LIMITS OF CONCRETE

25.  $2x^2 + 3x - 2$

1. IMPROVEMENTS WITHIN CITY OF RENO RIGHT-OF-WAY SHALL BE CONSTRUCTED PER CITY STANDARDS DRAWINGS AND SPECIFICATIONS, AND COORDINATED WITH CITY OF RENO.
2. ALL IMPROVEMENTS WITHIN CITY OF RENO RIGHT-OF-WAY SHALL MAINTAIN COMPLIANCE WITH ADA STANDARDS.
3. SEE SITE DIMENSION PLAN FOR LAYOUT INFORMATION AND SITE IMPROVEMENTS.

FINAL CD SUBMITTAL REV 1

[illegible]