

IMAGING SOLUTIONS

SHEET INDEX

SHEET NUMBER	SHEET DESCRIPTION
N1	GENERAL NOTES
N2	SITE READINESS NOTES
A1	EQUIPMENT LAYOUT
A2	TABLE AND STAND MOUNT
CS1 & CS2	CEILING STRUCTURE
E1	ELECTRICAL REQUIRED
E2	ELECTRICAL REQUIRED
E3	ELECTRICAL REQUIRED



IMAGING SOLUTIONS

3223 32nd Ave South, Suite 201
Fargo, North Dakota 58103
Phone: (701) 297-0305
Fax: (701) 235-4847
www.imagingsolutionsinc.com

PROJECT TITLE: PRELIMINARY DRAWING: P2

HOT SPRINGS, SD

SHEET TITLE:

SHEET INDEX

DATE: 6/14/17
REVISION: 5
SHEET NUMBER:

S1

1 OF 10 SHEET

GENERAL NOTES

1. THESE DRAWINGS ARE FOR INFORMATION PURPOSES ONLY. DRAWINGS SUGGESTS LOCATION OF X-RAY EQUIPMENT AND ASSOCIATED DEVICES, ELECTRICAL DETAILS AND ROOM LAYOUT. THE PREPAIRER OF THESE PLANS CANNOT ACCEPT RESPONSIBILITY FOR ANY CHANGES TO THE EQUIPMENT OR THE ROOM OR ANY DAMAGES RESULTING FROM. ACTUAL CONSTRUCTION DRAWINGS SHOULD BE PROVIDED BY CUSTOMERS ARCHITECT OR GENERAL CONTRACTOR. EVERY EFFORT IS MADE TO GIVE ACCURATE DETAIL OF ACTUAL EQUIPMENT TO BE INSTALLED.
2. IMAGING SOLUTIONS IS ONLY RESPONSIBLE FOR INSTALLATION OF IMAGING EQUIPMENT PURCHASES FROM OR CONTRACTED FOR IMAGING SOLUTIONS. ROOM PREPARATION INCLUDING NECESSARY CONSTRUCTION, NETWORKING AND SHIELDING TO BE SUPPLIED BY OTHERS.
3. CUSTOMER AND GENERAL CONTRACTOR ARE RESPONSIBLE FOR PREPARING THE ROOM AND COSTS INVOLVED.
4. CUSTOMER AND GENERAL CONTRACTOR ARE RESPONSIBLE FOR ALL, BUT NOT LIMITED TO, BUILDING, ELECTRICAL, CONTRACTING, PROFESSIONAL FEES AND PERMITS.
5. CUSTOMER IS RESPONSIBLE FOR OBTAINING LEAD SHIELDING REQUIREMENTS FROM A LICENSED PHYSICIST PER STATE AND/OR LOCAL REGULATION
6. CUSTOMER IS RESPONSIBLE FOR LIGHTING (NOT ON THIS PLAN). DIMMING LIGHTS MUST BE PROVIDED IN X-RAY AND CONTROL ROOMS BY ARCHITECT PLAN OR ELECTRICAL CONTRACTOR.
7. CEILING HEIGHT MUST BE MAINTAINED AS INDICATED ON THIS PLAN. IF UNOBTAINABLE CUSTOMER OR CONTRACTOR MUST NOTIFY IMAGING SOLUTIONS
8. ALL DIMENSIONS ARE FROM FINISHED SURFACES UNLESS NOTED.
9. WALL BAKING FOR EQUIPMENT SUPPORT TO BE MINIMUM OF 1/2" WOOD SECURED TO MINIMUM OF 3 WALL STUDS WITH BACKING FLUSH WITH FACE OF STUDS.
10. CONSTRUCTION MUST COMPLY WITH BUILDING CODES.
11. CUSTOMER IS RESPONSIBLE FOR FURNISHING AND INSTALLATION AT CUSTOMERS EXPENSE OF ELECTRICAL JUNCTION BOXES, TROUGH, CONDUIT, BUSHINGS, WIRE DUCT, COVER PLATES, MAIN SWITCHES , PANEL BOARDS, WIRES, UNISTRUT (WALL FLOOR OR CEILING), OR ANY SATISFACTORY INSTALLATION OF X-RAYEQUIPMENT.
12. IMAGING SOLUTIONS MUST PROVIDE A SIGNED PURCHASE ORDER PRIOR TO ANY WORK OR MATERIALS PROVIDED AT IMAGING SOLUTIONS EXPENSE. IMAGING SOLUTIONS ASSUMES NO RESPONSIBILITY FOR ANY CONSTRUCTION COSTS RELATED OR NOT RELATED TO THE INSTALLATION OF ANY X-RAY EQUIPMENT.



IMAGING SOLUTIONS

3223 32nd Ave South, Suite 201
Fargo, North Dakota 58103
Phone: (701) 297-0305
Fax: (701) 235-4847
www.imagingsolutionsinc.com

PROJECT TITLE: PRELIMINARY DRAWING: P2

HOT SPRINGS, SD

SHEET TITLE:

GENERAL NOTES

DATE: 6/14/17
REVISION: 5
SHEET NUMBER:

N1

2 OF 10 SHEET

SITE READINESS NOTES

1. TO ENSURE THE BEST ENSURE THE BEST ENVIRONMENT FOR INSTALLATION AND PROTECTION OF MECHANICAL EQUIPMENT, COMPUTERS, MONITORS, ELECTRICAL DEVICES, X-RAY TUBES, IMAGE INTENSIFIERS, AND CAMERAS THE FOLLOWING GENERAL CONDITIONS ARE REQUIRED PRIOR TO DELIVERY. RESCHEDULING BY IMAGING SOLUTIONS MANAGEMENT COULD BE REQUIRED IF CONDITIONS ARE NOT MET.
2. THE CUSTOMER IS REQUIRED TO OBTAIN ALL PERMITTING, SHIELDING AND APPROVALS REQUIRED BY LOCAL OR STATE GOVERNING AGENCIES.
3. CONSTRUCTION COMPLETE WITH LEAD BARRIORS INSTALLED, DOORS HUNG, FLOOR COVERING INSTALLED , CEILING COMPLETED, WALLS COMPLETE AND PAINTED.
4. A DUST FREE ENVIRONMENT MUST BE KEPT IN THE X-RAY, CONTROL AND SURROUNDING ROOMS.
5. HVAC COMPLETED, TESTED AND FUNCTIONING PRIOR TO DELIVERY.
6. POWER AT DESIGNATED PANEL AND EQUIPMENT PRIOR TO DELIVERY.
7. ALL CONDUIT, TROUGH, JUNCTION BOXES, WIRE RACEWAYS INSTALLED ACCORDINGLY
8. LIGHTING TO BE INSTALLED AND FUNCTIONING.
9. BASE PLATES, REINFORCEMENT PLATES, OVERHEAD GRID INSTALLED AS DESIGNATED. IT IS THE RESPONSIBILITY OF THE CUSTOMERS DESIGN ENGINEER TO RECOMMEND METHODS OF ANCHORING AND ATTACHING IMAGING SOLUTIONS EQUIPMENT.
10. NETWORK, NETWORK DROPS, PACS, ROUTERS, COMPUTERS, PROCESSORS, PRINTERS, LAST IMAGERS, AND/OR CAMERAS ARE INSTALLED AND TESTED FUNCTIONAL PRIOR TO INSTALL. CUSTOMER IS RESPONSIBLE FOR OBTAINING AND MAINTAINING ANY AND ALL BACK-UP POWER, ANTI-VIRUS SOFTWARE, FIREWALLS, OR OTHER SOFTWARE AND HARDWARE. IMAGING SOLUTIONS WILL CONNECT TO CUSTOMERS NETWORK BUT ASSUMES NO RESPONSIBILITY FOR THE NETWORK RELATED PROBLEMS. IMAGING SOLUTIONS IS NOT RESPONSIBLE FOR COMPUTER ISSUES DUE TO CUSTOMER OR PATIENTS UNAUTHORIZED US OR INSTALLATION OF COMPUTER PROGRAMS FOR THE PERSONAL USE.
11. IMAGING SOLUTIONS SUPPLIED SERVERS ARE NOT TO HAVE UPDATES INSTALLED WITHOUT IMAGING SOLUTIONS PRIOR CONSENT. VPN AND PHONE SERVICE MUST BE INSTALLED PRIOR TO INSTALL.
12. A CLEAR, UNOBSTRUCTED, PATH INCLUDING ROOM ENTRY MUST BE PROVIDED BY THE CUSTOMER FOR DELIVERY.
13. REMOVAL OF OLD EQUIPMENT IS A SEPARATE SERVICE. PLEASE CONTACT IMAGING SOLUTIONS FOR ALL YOUR X-RAY NEEDS.



IMAGING SOLUTIONS

3223 32nd Ave South, Suite 201
Fargo, North Dakota 58103
Phone: (701) 297-0305
Fax: (701) 235-4847
www.imagingsolutionsinc.com

PROJECT TITLE: PRELIMINARY DRAWING: P2

HOT SPRINGS, SD

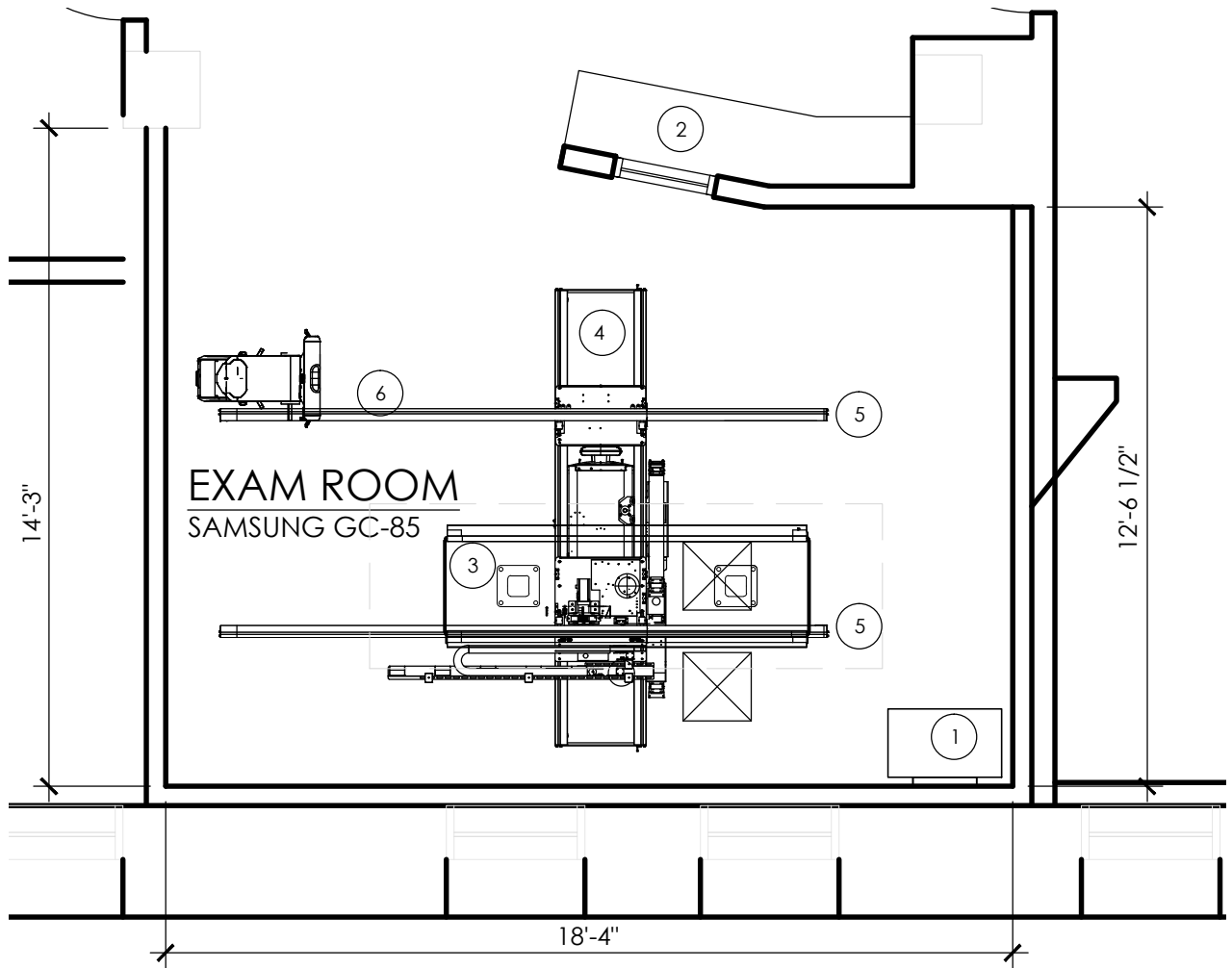
SHEET TITLE:

SITE READINESS NOTES

DATE: 6/14/17
REVISION: 5
SHEET NUMBER:

N2

3 OF 10 SHEET



RECOMMENDED
CEILING HEIGHT 9'-6"

EQUIPMENT LEGEND	①	SAMSUNG GENERATOR CABINET	29.5"L 19.3"W 43"H	220 LBS	11,798 BTU
	②	SAMSUNG XGEO WORKSTATION	21"L 15"W	85 LBS	1200 BTU
	③	SAMSUNG TABLE	96"L 32"W VARIABLE H	484 LBS	120 BTU
	④	SAMSUNG 3M METER BRIDGE	118"L 24"W VARIABLE H	800LBS	873
	⑤	SAMSUNG 4M CEILING RAILS	157"L	X	N/A BTU
	⑥	SAMSUNG TILTING WALL STAND	25"L 32"W 87"H	330 LBS	120 BTU



IMAGING SOLUTIONS

3223 32nd Ave South, Suite 201
 Fargo, North Dakota 58103
 Phone: (701) 297-0305
 Fax: (701) 235-4847
 www.imagingsolutionsinc.com

PROJECT TITLE: PRELIMINARY DRAWING: P2

HOT SPRINGS, SD

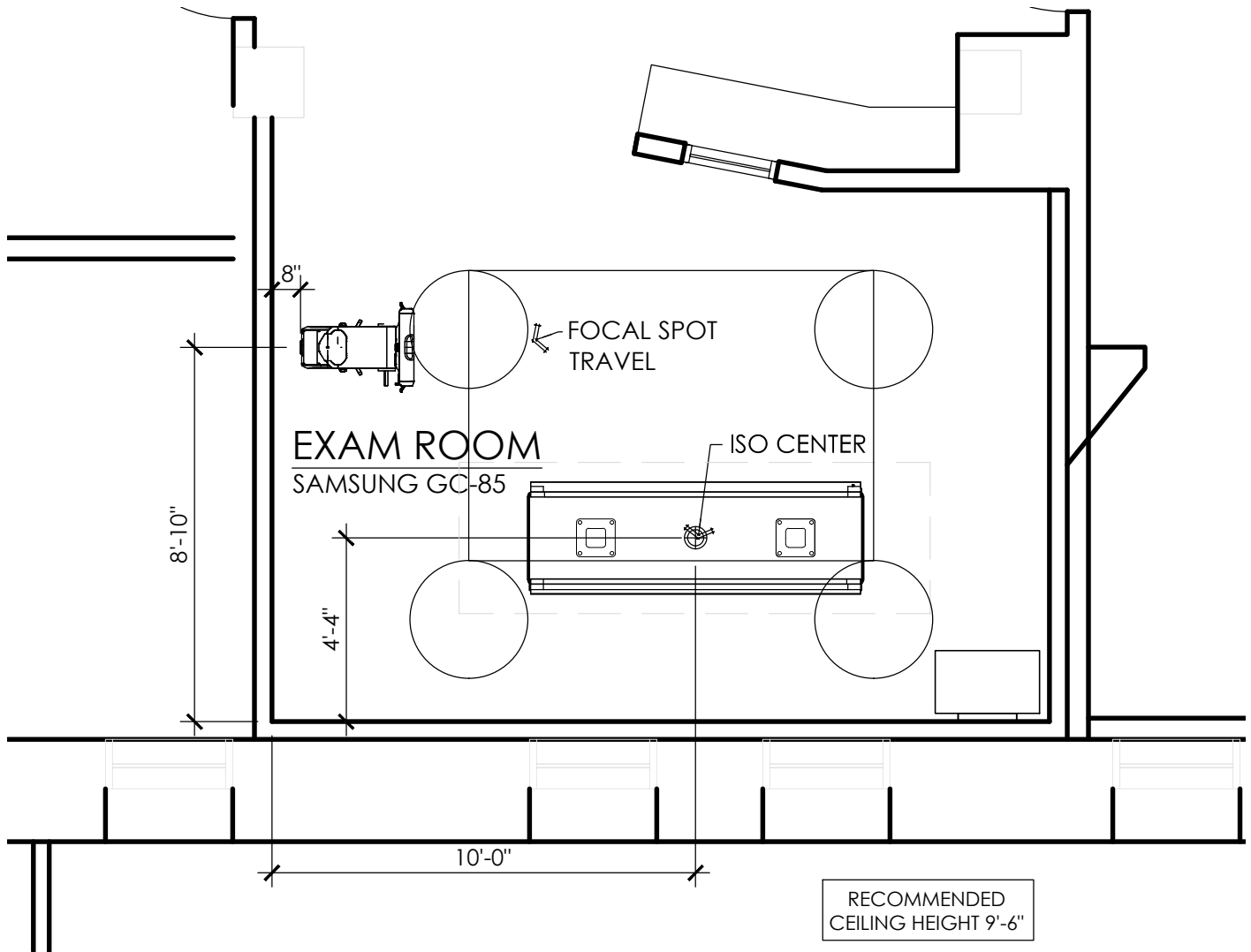
SHEET TITLE:

EQUIPMENT LAYOUT

DATE: 6/14/17
 REVISION: 5
 SHEET NUMBER:

A1

4 OF 10 SHEET



USE APPROPRIATE ANCHORS AND WASHERS TO MOUNT TO THE FLOOR. USE OF ANY SMALLER SIZE MAY CAUSE THE BASE TO BREAK FREE FROM THE FLOOR UNDER EXTREME LOAD AND LEVERAGE CONDITIONS.

IT IS UP TO THE INSTALLER AND THE CUSTOMER TO DETERMINE THE BEST METHOD FOR MOUNTING THE BASE TO THE FLOOR. BEFORE MOUNTING THE BASE, CONSULT WITH THE BUILDING'S MAINTENANCE SUPERVISOR ABOUT DRILLING HOLES IN THE FLOOR. MAKE SURE THAT THERE ARE NO HAZARDS UNDER THE FLOOR SUCH AS PIPES, CONDUITS, OR STRUCTURAL CABLES WHICH CAN BE DAMAGED BY DRILLING HOLES IN FLOOR.



IMAGING SOLUTIONS

3223 32nd Ave South, Suite 201
 Fargo, North Dakota 58103
 Phone: (701) 297-0305
 Fax: (701) 235-4847
 www.imagingsolutionsinc.com

PROJECT TITLE: PRELIMINARY DRAWING: P2

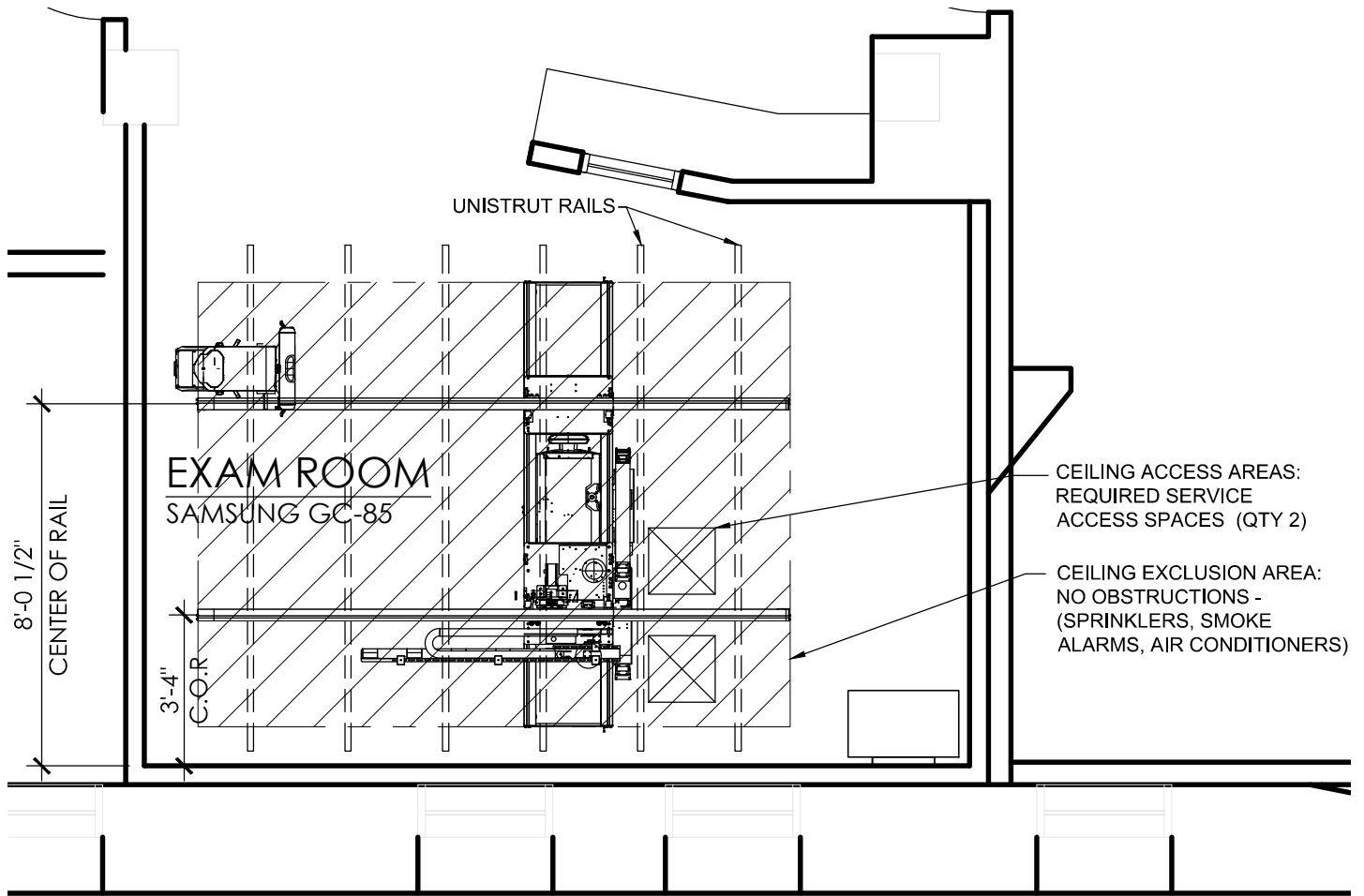
HOT SPRINGS, SD

SHEET TITLE:

TABLE & STAND MOUNT

DATE: 6/14/17
 REVISION: 5
 SHEET NUMBER:

A2
 5 OF 10 SHEET



CEILING ACCESS AREAS:
REQUIRED SERVICE
ACCESS SPACES (QTY 2)

CEILING EXCLUSION AREA:
NO OBSTRUCTIONS -
(SPRINKLERS, SMOKE
ALARMS, AIR CONDITIONERS)

EXISTING CEILING STRUCTURE TO
BE UTILIZED, VERIFY POSITIONING
AND STRUCTURAL CAPACITY

RECOMMENDED
CEILING HEIGHT 9'-6"

STRUCTURAL SUPPORT TO BE DESIGNED, SUPPLIED
AND INSTALLED BY GENERAL CONTRACTOR WITH
ALL HARDWARE FOR CEILING MOUNTED X-RAY
EQUIPMENT. STRUCTURAL SUPPORT MUST BE
RIGID AND UNABLE TO SWAY/BUCKLE/BEND AT
ANY POINT. SUPPORT ALSO MUST BE LEVEL,
SQUARE, PARALLEL AND COPLANER TO ITSELF.

EQUIPMENT VENDOR OR VENDORS DESIGNER IS IN NO WAY
RESPONSIBLE FOR THE DESIGN OR INSTALLATION OF
STRUCTURAL SUPPORTS FOR ANY CEILING MOUNTED X-RAY
EQUIPMENT. THESE DRAWINGS ARE FOR ILLUSTRATION
PURPOSES ONLY. PURCHASER OR GENERAL CONTRACTOR
SHOULD CONSULT A STRUCTURAL ENGINEER AND/OR
UNISTRUT REP TO COORDINATE SUPPORT STRUCTURE, ANY
STRUCTURAL DETAILS SHOWN ARE FOR EXAMPLE ONLY AND
NOT TO BE USED FOR ACTUAL CONSTRUCTION. ENTIRE
CEILING STRUCTURE MUST BE ABLE TO WITHSTAND 1.2 TONS.



IMAGING SOLUTIONS

3223 32nd Ave South, Suite 201
Fargo, North Dakota 58103
Phone: (701) 297-0305
Fax: (701) 235-4847
www.imagingsolutionsinc.com

PROJECT TITLE:

PRELIMINARY DRAWING: P2

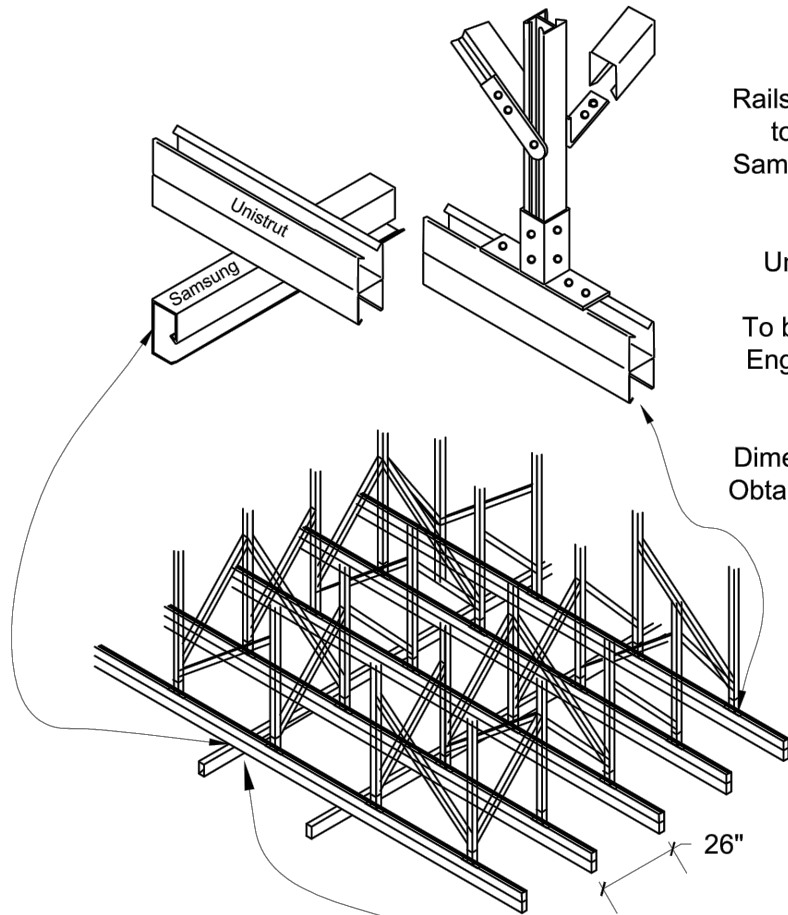
HOT SPRINGS, SD

SHEET TITLE:

CEILING STRUCTURE

DATE: 6/14/17
REVISION: 5
SHEET NUMBER:

CS1
6 OF 10 SHEET

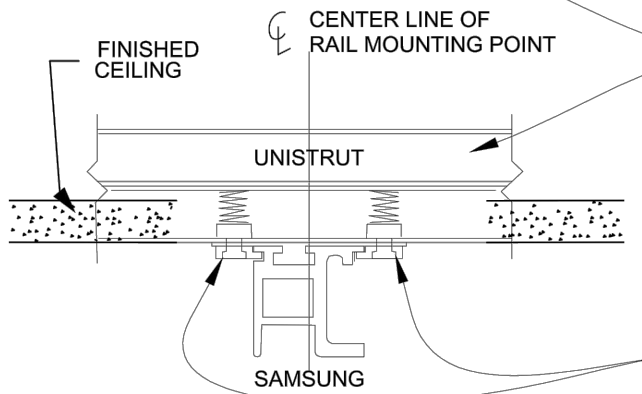


Recommended Unistrut

Rails that will Mount the Samsung Rails to be spaced 26" apart on Center
 Samsung Rails will mount to the bottom of Unistrut Rails

Unistrut or Equivalent Support and Vertical Members
 To be approved by qualified Structural Engineer / Unistrut Rep / Any Hospital Safety Officer
 Entire Assembly will Vary on Dimensions, Building Construction, Slab. Obtain Approval of a Qualified Structural Engineer.

ENTIRE CEILING STRUCTURE MUST BE ABLE TO WITHSTAND 1.2 TONS



This Mounting Point Is Typical of ALL Intersections of Unistrut and Samsung OTC Longitudinal Rails. The Maximum Load per Mounting Point is 1575 LBS (Except where Seismic Loads Govern)

2 Mounting Bolts per Point



IMAGING SOLUTIONS

3223 32nd Ave South, Suite 201
 Fargo, North Dakota 58103
 Phone: (701) 297-0305
 Fax: (701) 235-4847
 www.imagingsolutionsinc.com

PROJECT TITLE:

PRELIMINARY DRAWING: P2

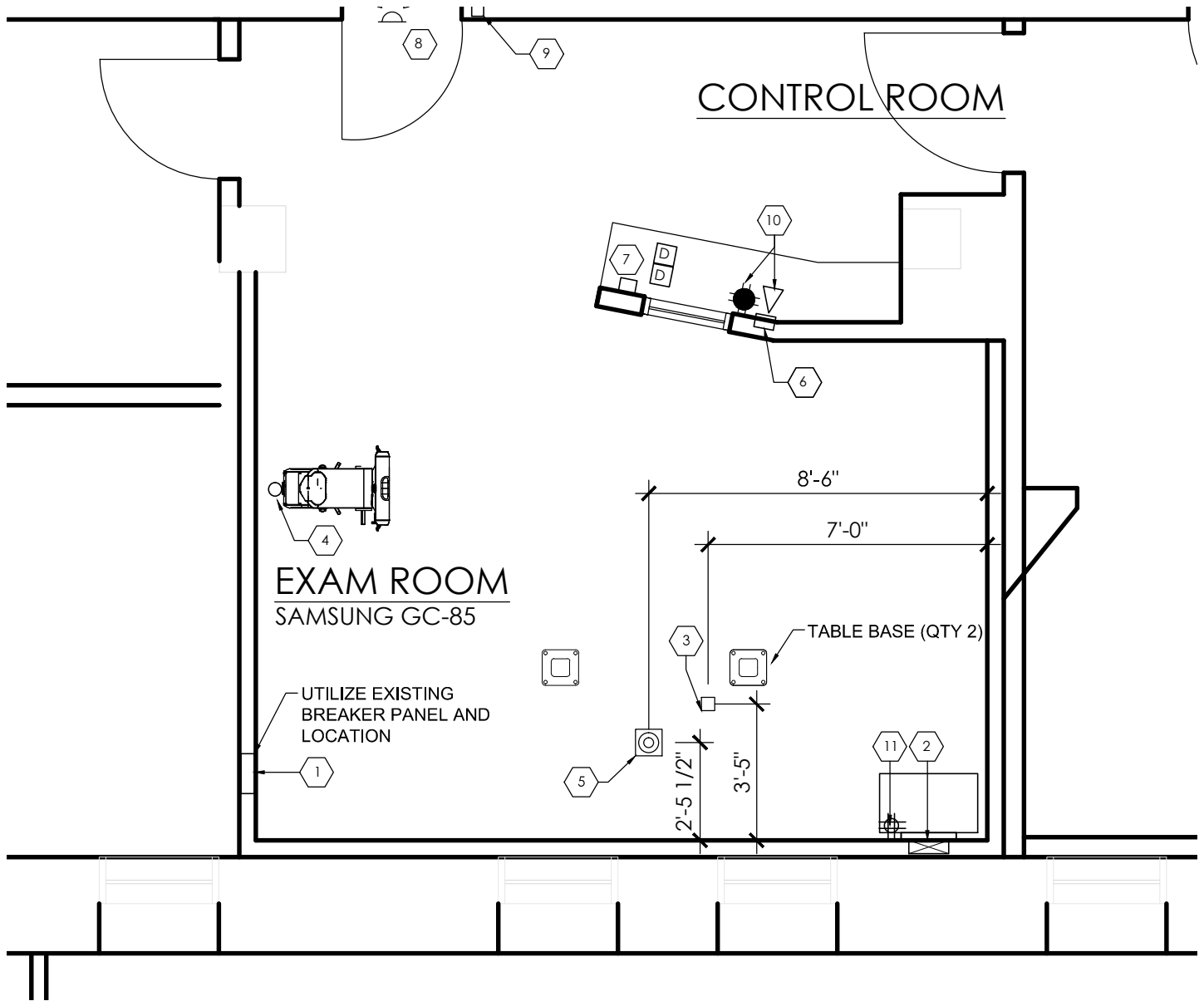
HOT SPRINGS, SD

SHEET TITLE:

CEILING STRUCTURE

DATE: 6/14/17
 REVISION: 5
 SHEET NUMBER:

CS2
 7 OF 10 SHEET



* SEE SHEET E2 FOR ELECTRICAL CALLOUT INFORMATION

NOTE: #6 GROUND WIRE REQUIRED
 VOLTAGE FLUCTUATION ± 10 FULL
 LOAD. ALL WIRES TO BE THHN OR TFFN
 STRANDED COPPER THERMOPLASTIC
 600 VOLT OR EQUIVALENT, UNLESS
 OTHERWISE NOTED. MAXIMUM
 LENGTH FROM DISTRIBUTION
 TRANSFORMER TO ROOM MAIN
 BREAKER NOT TO EXCEED 200 FEET.

THREE PHASE	MAIN FACILITY DIST XFMR	INCOMING WIRE SIZE $\leq 50'$ $\leq 100'$ $\leq 200'$	X-RAY ROOM BREAKER
480 VAC	105 KVA	#2 #00 250MCM	100 AMP



IMAGING SOLUTIONS

3223 32nd Ave South, Suite 201
 Fargo, North Dakota 58103
 Phone: (701) 297-0305
 Fax: (701) 235-4847
 www.imagingsolutionsinc.com

PROJECT TITLE: PRELIMINARY DRAWING: P2

HOT SPRINGS, SD

SHEET TITLE:

ELECTRICAL REQUIRED

DATE: 6/14/17
 REVISION: 5
 SHEET NUMBER:

E1

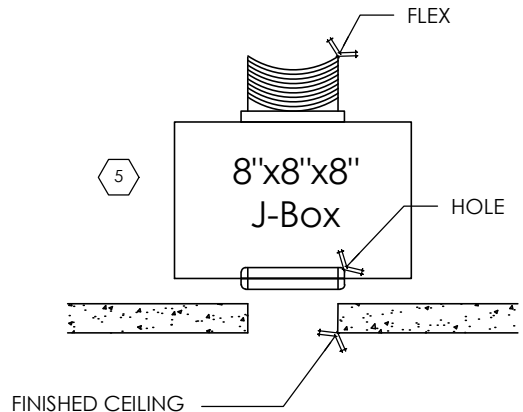
8 OF 10 SHEET

1	INCOMING LINE POWER AND SHUNT TRIP BREAKER. SEE MSP-E2 SPECIFICATION BLOCK
2	12" WALL TROUGH WITH (1) 3" GROMMETED HOLE OR ACCESS SPACE IN COVER 18" FROM FLOOR
3	4" x 4" JBOX LOCATED FLUSH W/ FINISHED FLOOR WITH (1) 2" GROMMETED HOLE IN COVER
4	2" HOLE CORE DRILLED THROUGH FLOOR AS CLOSE TO WALL AS POSSIBLE
5	8"X8"X8" JUNCTION BOX 1" ABOVE FINISHED CEILING WITH CONDUIT OR FLEX TO TROUGH WITH (1) 3" GROMMETED HOLE IN COVER FACING DOWN *CONTRACTOR SUPPLIED*
6	4" X 4" J-BOX CENTERED 18" A.F.F. WITH (1) 2" GROMMETED HOLE IN COVER
7	E.P.O. SWITCH IS CONTRACTOR SUPPLIED AND INSTALLED PROVIDES SHUNT TRIP FOR INCOMING LINE POWER @ ITEM ①
8	WARNING LIGHT ABOVE DOOR. WIRES TO BE ROUTED TO WALL TROUGH 2 WITH 12 FOOT WHIP AT FLOOR TO MAKE CONNECTIONS
9	DOOR SWITCH(ES) ARE CONTRACTOR SUPPLIED AND INSTALLED WITH (2) #14 WIRES TO WALL TROUGH 2 WITH 12' WHIP FOR MAKING FINAL CONNECTIONS
10	(1) DEDICATED QUAD OUTLET 115VAC 20 AMP (1) NETWORKING DATA DROPS LOCATED 12" A.F.F
11	(1) DEDICATED QUAD OUTLET 115VAC 20 AMP LOCATED 12" A.F.F

ELECTRICAL CALLOUT INFO

NOTE: #6 GROUND WIRE REQUIRED VOLTAGE FLUCTUATION ± 10 FULL LOAD. ALL WIRES TO BE THHN OR TFFN STRANDED COPPER THERMOPLASTIC 600 VOLT OR EQUIVALENT, UNLESS OTHERWISE NOTED. MAXIMUM LENGTH FROM DISTRIBUTION TRANSFORMER TO ROOM MAIN BREAKER NOT TO EXCEED 200 FEET.

THREE PHASE	MAIN FACILITY DIST XFMR	INCOMING WIRE SIZE ≤ 50' ≤100' ≤200'	X-RAY ROOM BREAKER
480 VAC	105 KVA	#2 #00 250MCM	100 AMP



THREE PHASE INCOMING VOLTAGE	MINIMUM RECOMMENDED DISTRIBUTION TRANSFORMER RATING	INCOMING WIRE SIZE ≤ 50' ≤100' ≤200'	X-RAY ROOM MAIN BREAKER
480 VAC	105 KVA	#2 #00 250MCM	100 AMP

OPERATIONAL CLIMATE	
TEMPERATURE	10 - 40 DEGREES C OR 50 - 104 DEGREES F
HUMIDITY	30% - 75%
PRESSURE	70 kPa - 106 kPa

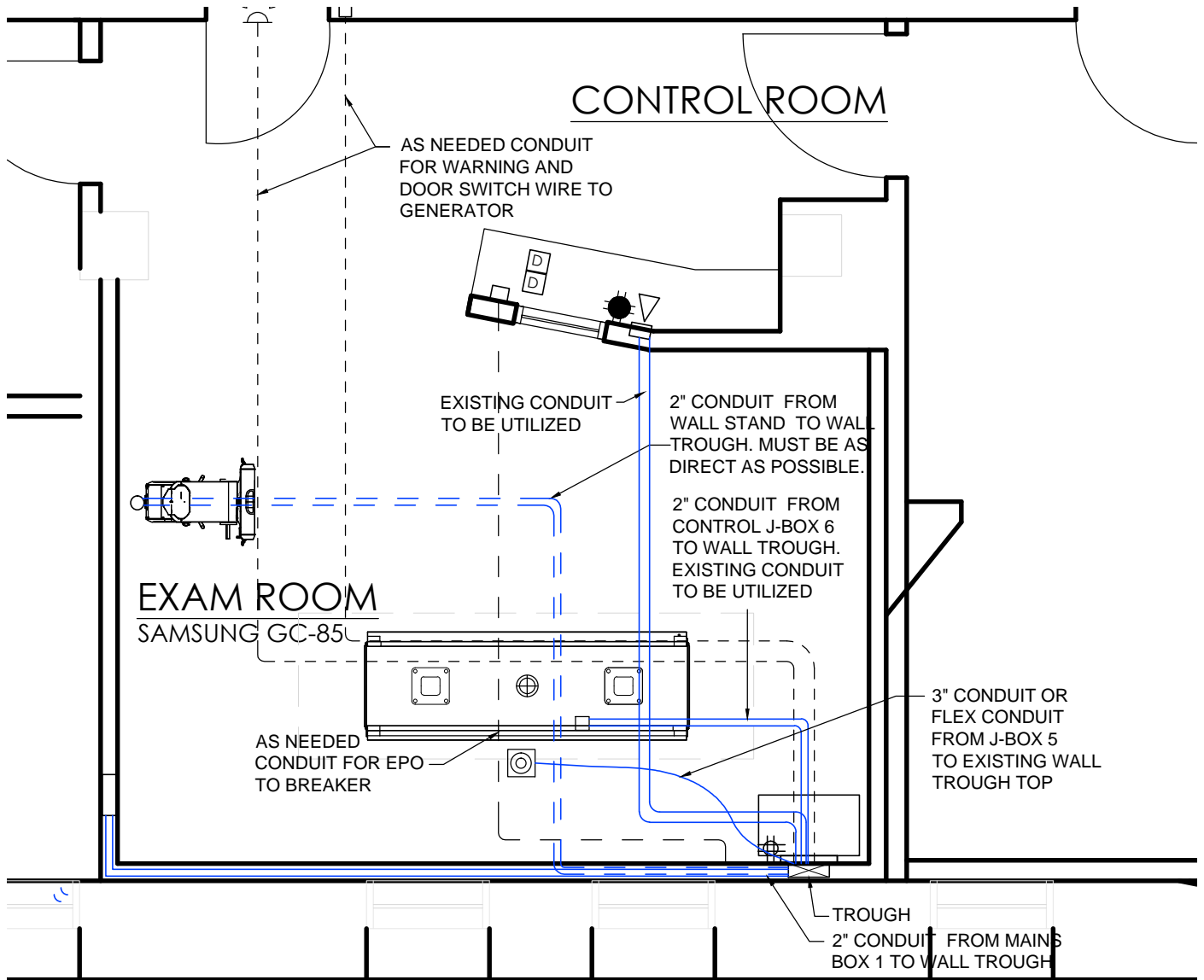
CONTRACTOR TO SUPPLY POWER WIRES NECESSARY FROM ROOM BREAKER TO GENERATOR

VOLTAGE FLUCTUATION ±10% FULL LOAD.

ALL WIRES TO BE THHN OR TFFN STRANDED COPPER THERMOPLASTIC 600 VOLT OR EQUIVALENT, UNLESS OTHERWISE NOTED.

MAXIMUM LENGTH FROM DISTRIBUTION TRANSFORMER TO ROOM MAIN BREAKER NOT TO EXCEED 200'.

NOTE: #6 GROUND WIRE REQUIRED



* SEE SHEET E2 FOR WIRE INFORMATION



IMAGING SOLUTIONS

3223 32nd Ave South, Suite 201
 Fargo, North Dakota 58103
 Phone: (701) 297-0305
 Fax: (701) 235-4847
 www.imagingsolutionsinc.com

PROJECT TITLE: PRELIMINARY DRAWING: P2

HOT SPRINGS, SD

SHEET TITLE:

ELECTRICAL REQUIRED

DATE: 6/14/17
 REVISION: 5
 SHEET NUMBER:

E3

10 OF 10 SHEET