

WATER-COOLED LIQUID CHILLER SCHEDULE																															
UNIT NO.	TYPE	CAPACITY (TONS)	REFRIGERANT	NPLV	EVAPORATOR								CONDENSER								ELECTRICAL					EMERGENCY POWER	MAX. UNIT DIMENSIONS (LxWxH)	MAX. OPERATING WEIGHT (LBS)	BASIS OF DESIGN		REMARKS
					FLUID TYPE	MIN/MAX GPM	EWI (°F)	LWT (°F)	MAX PRESS. DROP (FT)	WATER PASSES	FOULING FACTOR	MAX GPM	EWI (°F)	LWT (°F)	MAX PRESS. DROP (FT)	WATER PASSES	FOULING FACTOR	MAX POWER INPUT (KW)	MCA	FLA	MOP	VPH/Hz	VSD	MANUFACTURER	MODEL						
CH-1	MAGNETIC BEARING	750	R-134A	0.338	WATER	1810/1795	53	43	22	2	0.0001	2130	85	95	20	2	0.00025	450	741	592	1200	480/360	YES	YES	184"x96"x108"	23830	YORK	MC2	1.2		
CH-2	MAGNETIC BEARING	750	R-134A	0.338	WATER	1810/1795	53	43	22	2	0.0001	2130	85	95	20	2	0.00025	450	741	592	1200	480/360	YES	YES	184"x96"x108"	23830	YORK	MC2	1.2		
CH-3	MAGNETIC BEARING	750	R-134A	0.338	WATER	1810/1795	53	43	22	2	0.0001	2130	85	95	20	2	0.00025	450	741	592	1200	480/360	YES	YES	184"x96"x108"	23830	YORK	MC2	1.2		
CH-4	MAGNETIC BEARING	750	R-134A	0.338	WATER	1810/1795	53	43	22	2	0.0001	2130	85	95	20	2	0.00025	450	741	592	1200	480/360	YES	YES	184"x96"x108"	23830	YORK	MC2	1.2		
REMARKS:																															
1. PROVIDE WITH FULLY UNLOCKED CHILLER CONTROLLER.																															
2. PROVIDE WITH UNIT - MOUNTED VFD.																															

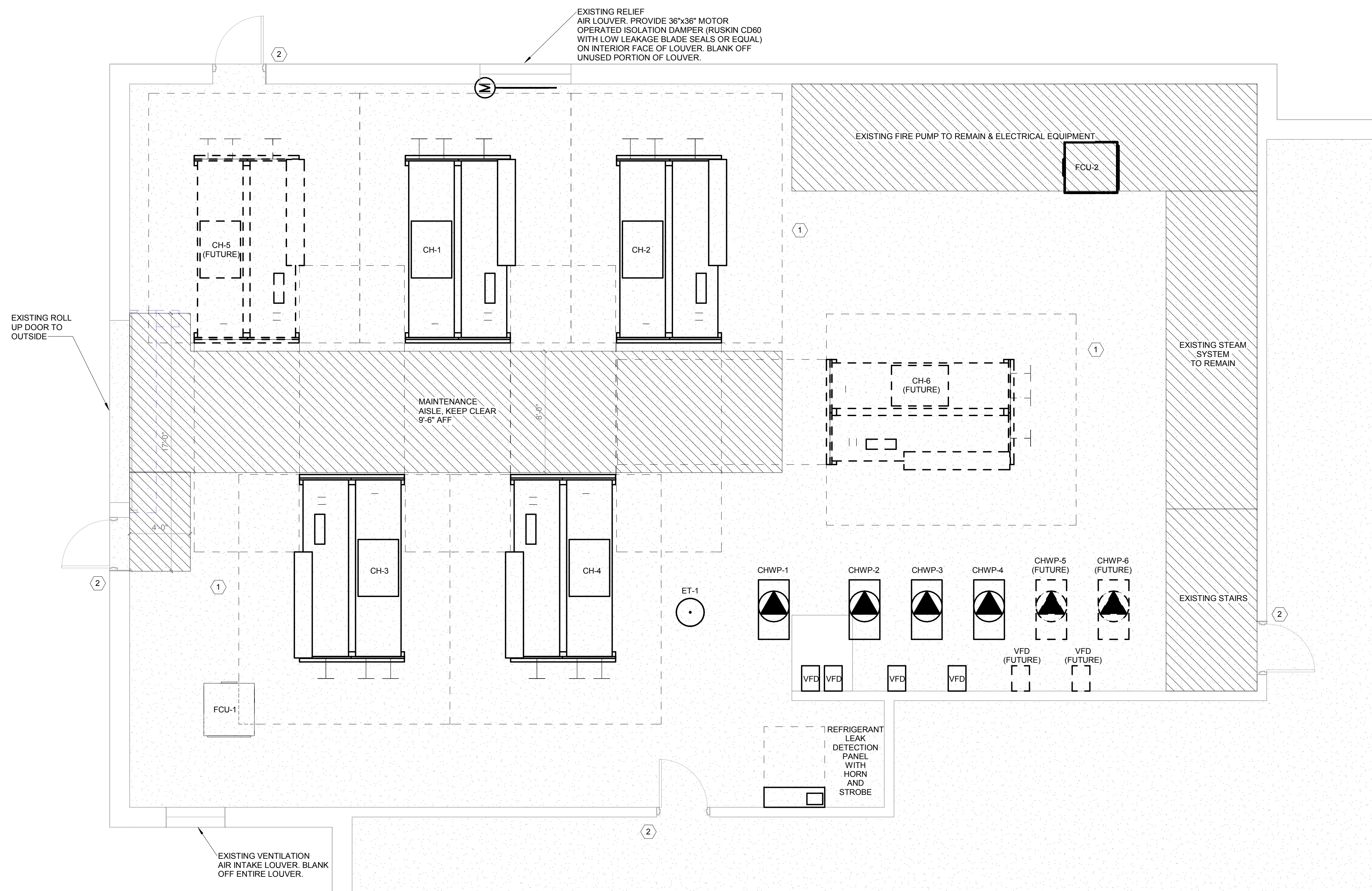
PUMP SCHEDULE																	
UNIT NO.	SYSTEM	TYPE	FLUID TYPE	CAPACITY (GPM)	IMPELLER SIZE (IN)	HEAD (FT)	EFFICIENCY (%)	SUCTION (IN)	DISCHARGE (IN)	BHP	HP	MOTOR RPM	VSD	EMERGENCY POWER	BASIS OF DESIGN MANUFACTURER MODEL		REMARKS
CHWP-1	CHILLED WATER	VERTICAL INLINE	WATER	1800	12.45	140	85.0	8	8	74.7	100	1790	YES	480/360	YES	ARMSTRONG SERIES 4300-4X8X13-100 HP	1, 2, 3, 4
CHWP-2	CHILLED WATER	VERTICAL INLINE	WATER	1800	12.45	140	85.0	8	8	74.7	100	1790	YES	480/360	YES	ARMSTRONG SERIES 4300-4X8X13-100 HP	1, 2, 3, 4
CHWP-3	CHILLED WATER	VERTICAL INLINE	WATER	1800	12.45	140	85.0	8	8	74.7	100	1790	YES	480/360	YES	ARMSTRONG SERIES 4300-4X8X13-100 HP	1, 2, 3, 4
CHWP-4	CHILLED WATER	VERTICAL INLINE	WATER	1800	12.45	140	85.0	8	8	74.7	100	1790	YES	480/360	YES	ARMSTRONG SERIES 4300-4X8X13-100 HP	1, 2, 3, 4
REMARKS:																	
1. PROVIDE WITH TEFC, PREMIUM EFFICIENCY MOTOR.																	
2. PROVIDE WITH SHAFT GROUND RINGS																	
3. PROVIDE VFD WITH BYPASS AND IEEE 519 LINE REACTOR.																	
4. PROVIDE WITH YASKAWA VSD.																	

TWO-PIPE FAN COIL UNIT SCHEDULE																			
MARK	CONFIG.	AIRFLOW (CFM)	ESP (IN WG)	CHILLED WATER COOLING COIL							ELECTRICAL			EMERGENCY POWER	FILTER MERV	BASIS OF DESIGN		REMARKS	
				CAPACITY (MBH)	MIN ROWS	EAT (°F DRWG)	LAT (°F DRWG)	GPM	EWI (°F)	LWT (°F)	COOLING COEFF (FT)	BHP	HP			FAN VPH/Hz	MANUFACTUR ER		MODEL
FCU-1	HORIZONTAL	1800	0.5	56	4	78/65	55/54	11.2	43	53	3.6	0.6	1	460/3/60	NO	8	TRANE	BCHD054G1**A3M04Z000000	1
FCU-2	HORIZONTAL	1800	0.5	56	4	78/65	55/54	11.2	43	53	3.6	0.6	1	460/3/60	NO	8	TRANE	BCHD054G1**A3M04Z000000	1
REMARKS: 1. PROVIDE WITH 120V CONDENSATE PUMP																			

EXPANSION TANK SCHEDULE										
MARK	TYPE	FLUID TYPE	VOLUME (GAL)	ACCEPTANCE (GAL)	PRE-CHARGE (PSI)	SIZE DIA x LENGTH (IN x IN)	MOUNTING	BASIS OF DESIGN		REMARKS
								MANUFACTURER	MODEL	
ET-1	DIAPHRAGM	WATER	70	56.5	37.7	24"x46"	FLOOR MOUNTED	ARMSTRONG	AX-120V	1
REMARKS: 1. PROVIDE WITH SIGHT GLASS.										

FAN SCHEDULE															
MARK	TYPE	CFM	SP. IN. INCH	RPM	RPM	DRIVE	MOTOR				EMERGENCY POWER	WEIGHT	BASIS OF DESIGN		REMARKS
							BHP	HP	RPM	VSD			V/PHRZ	MANUFACTURER	
EF-1	CENTRIFUGAL	2250/4500	0.5	962	962	DIRECT	1.1	1.5	1725	NO	460/3/60	129	GREENHECK	CUBE 200-15	1. 2. 3. 4.
REMARKS															
1. PROVIDE WITH PREMIUM EFFICIENCY MOTOR															
2. PROVIDE WITH ROOF CURB.															
3. PROVIDE WITH INTEGRAL STARTER & DISCONNECT.															
4. PROVIDE 2 SPEED FAN WITH AIRFLOWS AS SCHEDULED.															

AIR SEPARATOR SCHEDULE					
MARK	SIZE (DIA. X LENGTH)	GPM	BASIS OF DESIGN		REMARKS
			MANUFACTURER	MODEL	
AS-1	32"x110"	3000	Spirotherm	VD1600 FA	
AS-2	28"x98"	2500	Spirotherm	VD1400 FA	



1 CHILLER PLANT EQUIPMENT PLAN

KEYED NOTES:

1. REQUIRED EQUIPMENT MAINTENANCE ACCESS SPACE SHOWN WITH DASHED LINES. THESE CLEARANCES SHALL BE MAINTAINED.
2. LOCATE REFRIGERANT MONITOR STROBE ABOVE DOOR OUTSIDE OF CHILLER PLANT.

[illegible]