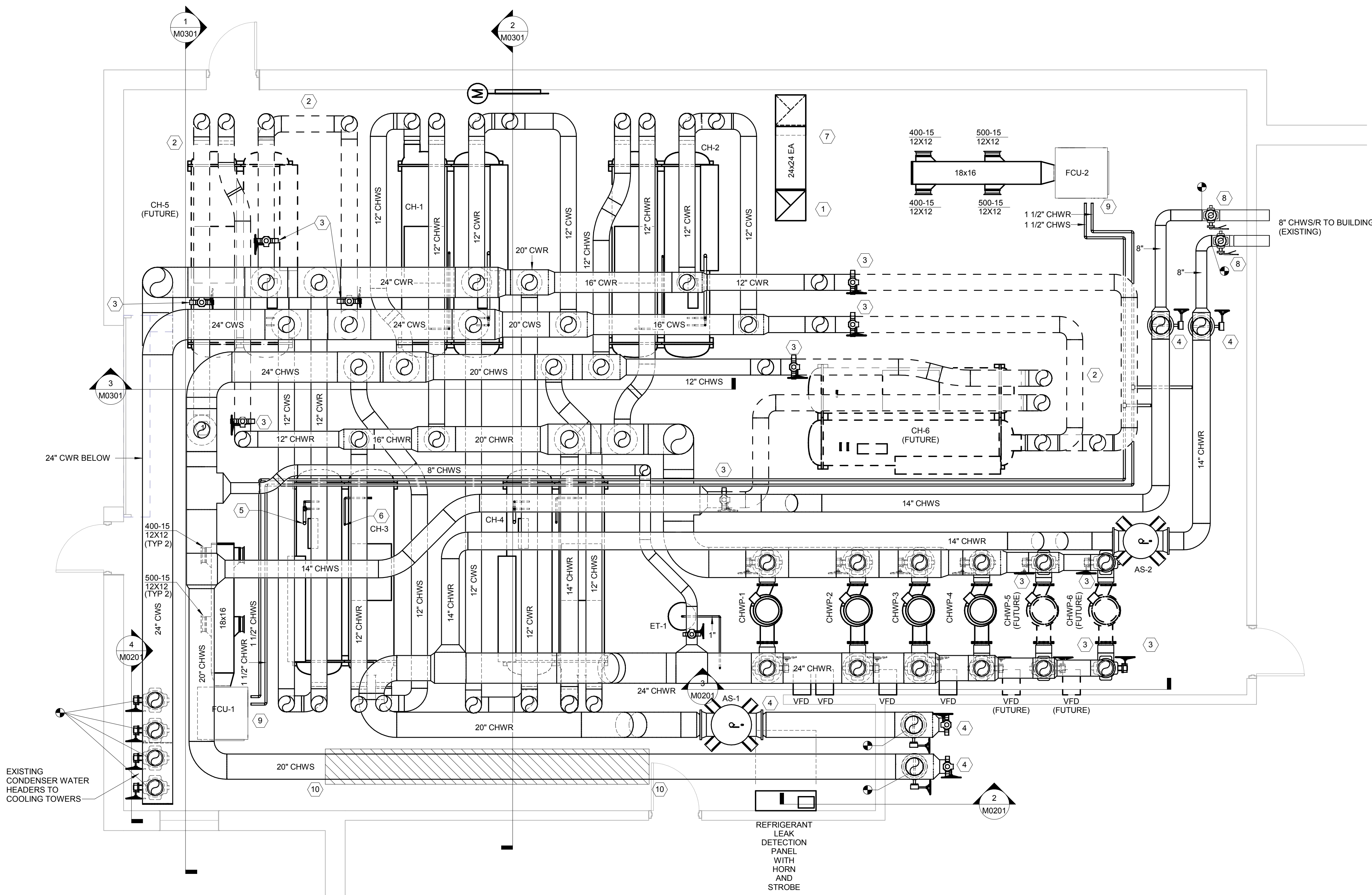
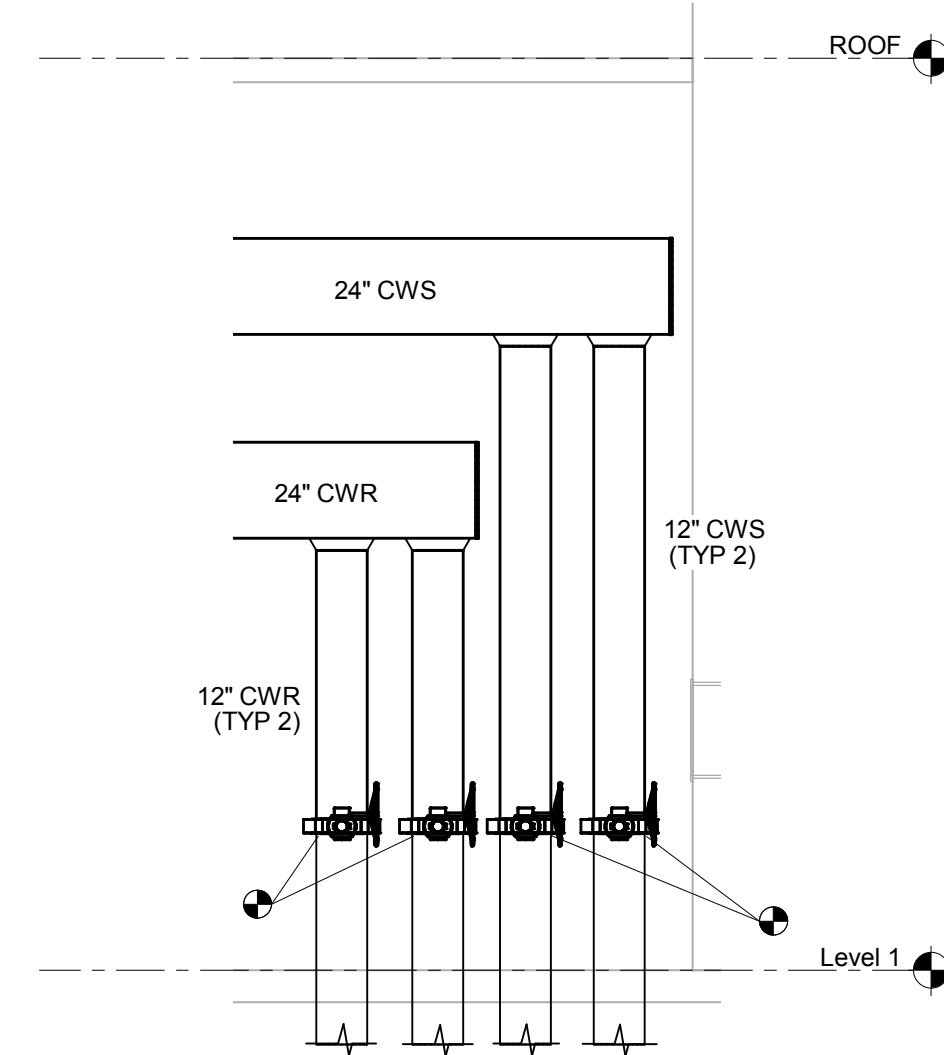


KEYED NOTES:

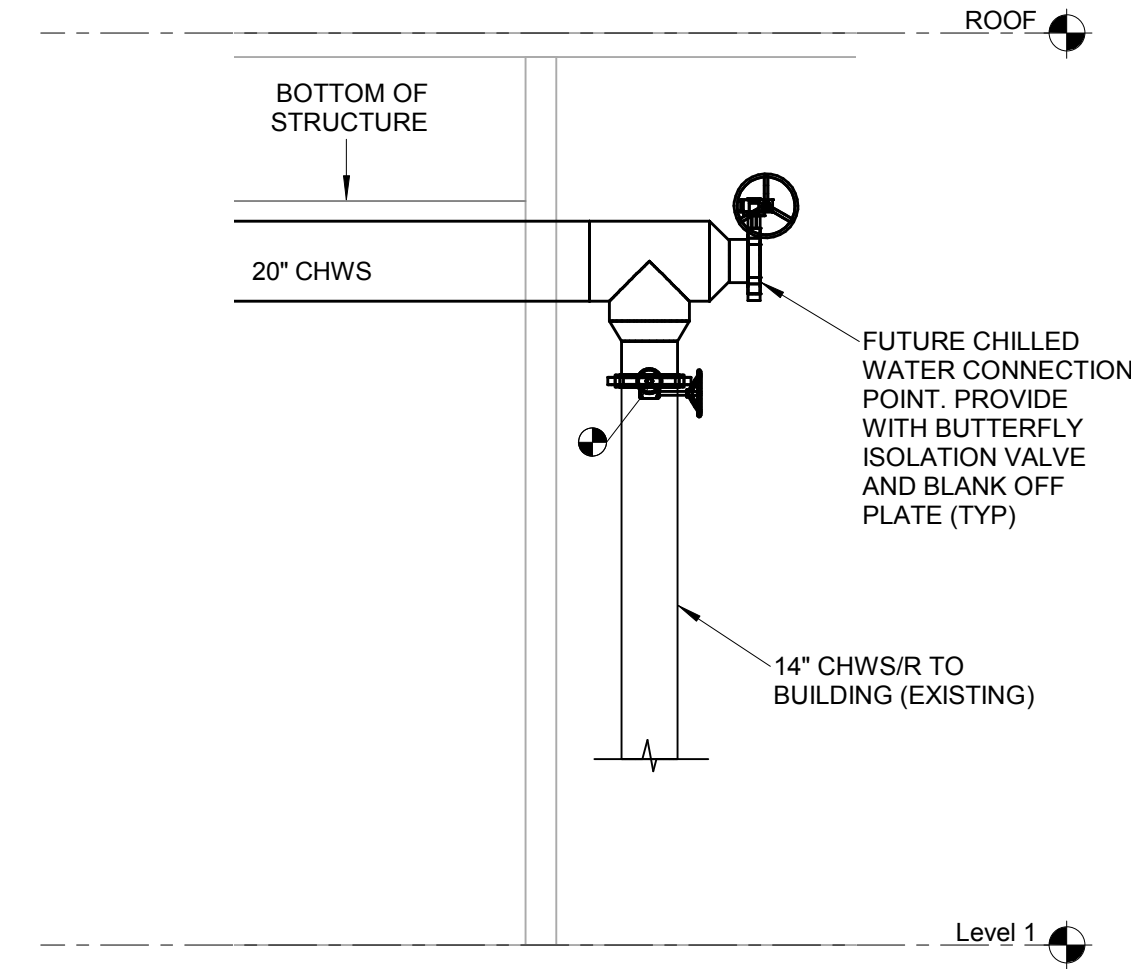
- 24"x24" EA UP TO EF-1 ON ROOF ABOVE.
- FUTURE PIPING SHOWN WITH DASHED LINES.
- PROVIDE BLIND FLANGE DOWNSTREAM OF VALVE FOR FUTURE CONNECTION.
- PROVIDE SPARE TEE, ISOLATION VALVE AND BLIND FLANGE FOR FUTURE CONNECTION.
- 2" RELIEF VENT UP THROUGH ROOF (TYP EACH CHILLER). COMPLY WITH MANUFACTURER'S INSTALLATION REQUIREMENTS.
- 1" RELIEF VENT UP THROUGH ROOF (TYP EACH CHILLER). COMPLY WITH MANUFACTURER'S INSTALLATION REQUIREMENTS.
- MOUNT 24"x24" GRILLE 18" AFF.
- TEMPORARY CHILLED WATER PIPING CONNECTION TO REMAIN. PROVIDE WITH BLIND FLANGE DOWNSTREAM OF ISOLATION VALVE AFTER COMPLETION OF NEW WORK.
- PROVIDE 1" COPPER CONDENSATE PIPING FROM FAN COIL UNIT TO NEAREST FLOOR DRAIN. ALL CONDENSATE DRAIN PIPING SHALL BE INSULATED WITH MINIMUM 1/2" FOIL FACED FIBERGLASS INSULATION INSTALLED WITH PVC JACKET.
- INSTALL DRAIN PAN UNDER CHWS PIPING INSTALLED ABOVE ELECTRICAL SWITCHGEAR IN AREA SHOWN.



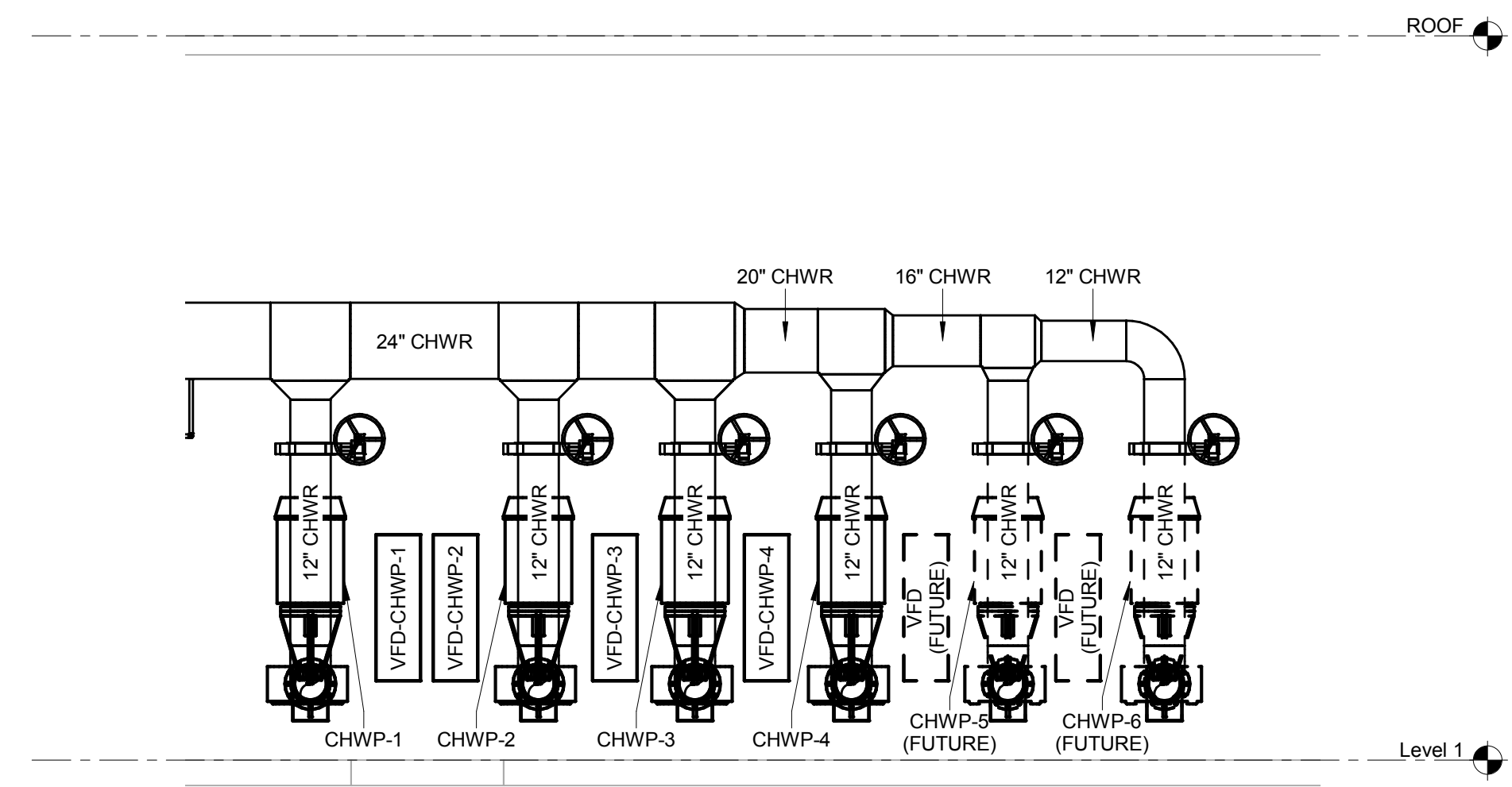
1 CHILLER PLANT PIPING & DUCTWORK PLAN
1/4" = 1'-0"



4 CONDENSER WATER CONNECTION
1/4" = 1'-0"



2 FUTURE CONNECTION SECTION VIEW
1/4" = 1'-0"



3 PUMP SECTION VIEW
1/4" = 1'-0"

CONSULTANTS:

ARCHITECT/ENGINEERS:

CANNONDESIGN

1100 Clark Avenue
St. Louis, Missouri 63102
T: 314.241.6250
F: 314.241.2570

© CannonDesign 2017
All rights reserved. No part of this document may be reproduced or utilized in any form, without prior written authorization by the Cannon Corporation

Drawing Title
HVAC DUCTWORK AND PIPING PLAN -
GROUND FLOOR

Approved: Project Director

Project Title
VA CHILLER PLANT

Location
JACKSON, MS

Date
SEPT 13, 2017

Checked
MEM

Drawn
ARO

Project Number
586-16-102
CANNON DESIGN PROJECT NO. 00640.02
Building Number

Drawing Number
M0201

Office of
Construction
and Facilities
Management

Department of
Veterans Affairs

ADDENDUM 01

04/11/2018