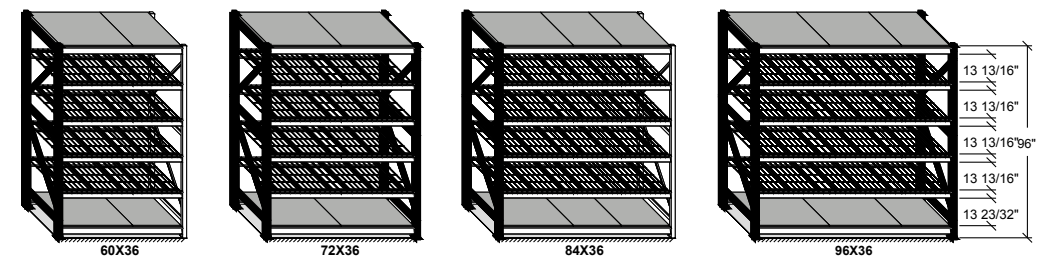


BF122 - WAREHOUSE BMS ELEVATIONS

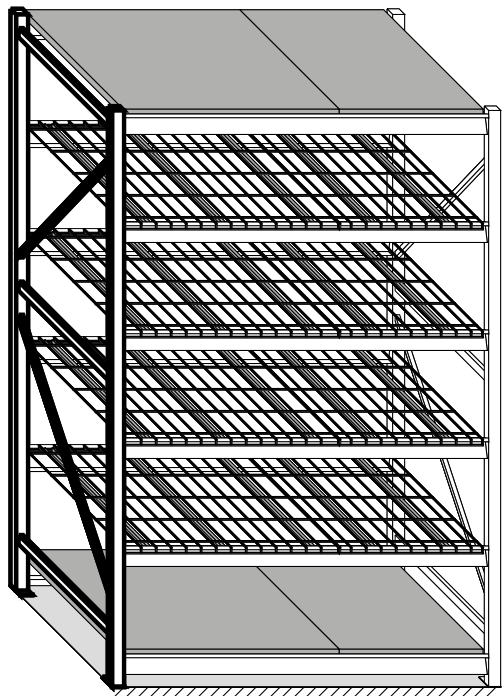


CURRENT :
27 BAYS OF RACK (MAIN WAREHOUSE) - 237 LINEAR FEET
6 BAYS OF RACK (FLUIDS) - 54 LINEAR FEET
TOTAL CUBIC FEET OF STORAGE IS 8,148

PROPOSED PLAN:
57 BAYS OF RACK - 399 LINEAR FEET
TOTAL CUBIC FEET OF STORAGE IS 9,576

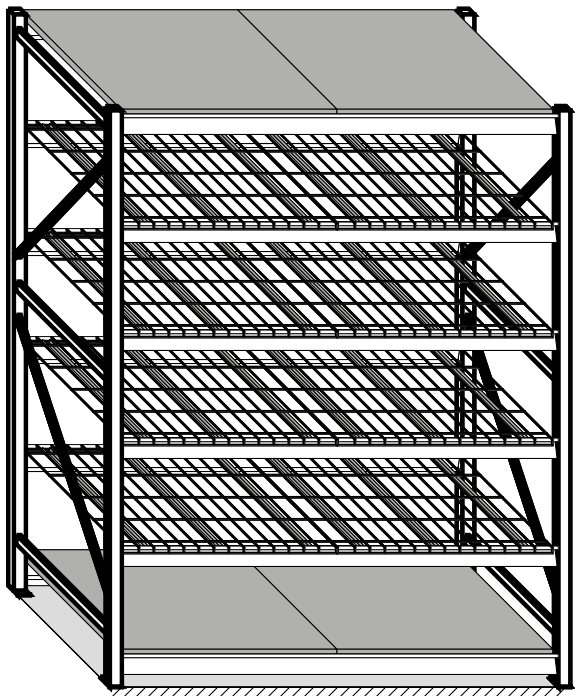
Scale
1/8" = 1'

BF122 - WAREHOUSE BMS ELEVATIONS



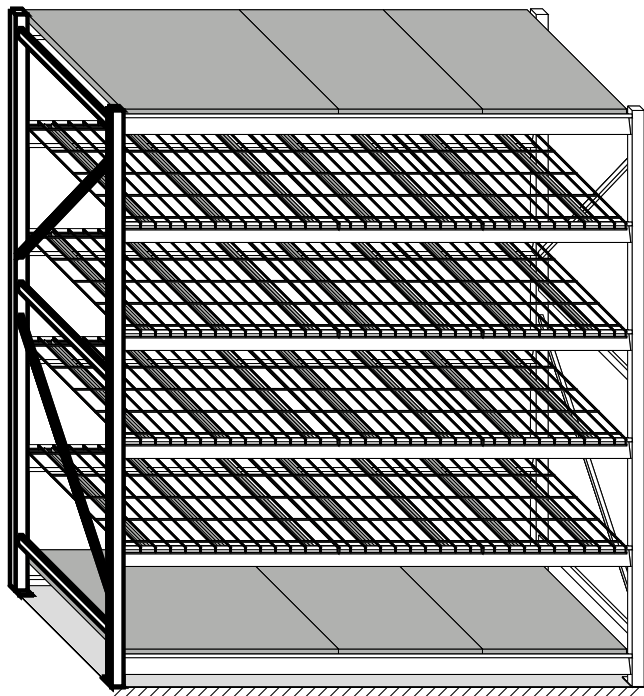
60X36

Quantity - 2



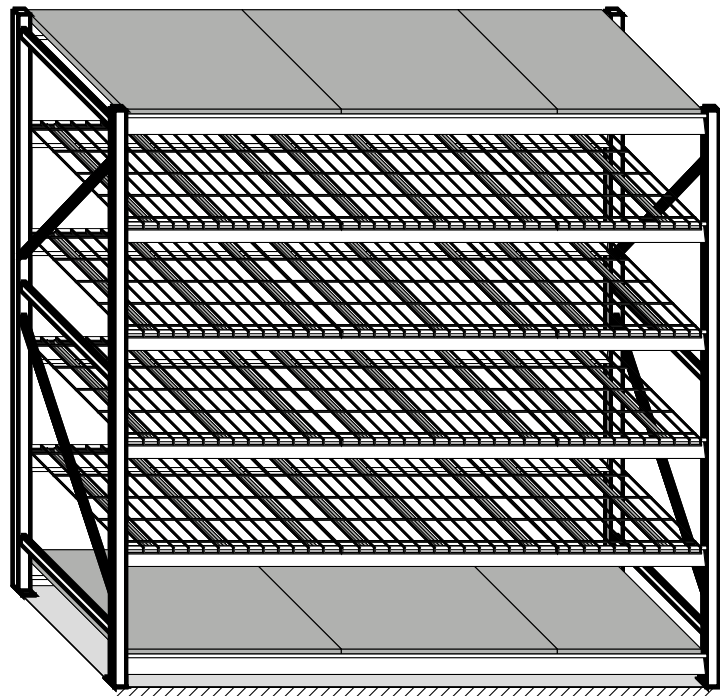
72X36

Quantity - 7



84X36

Quantity - 37



96X36

Quantity - 11

13 13/16"

13 13/16"

13 13/16"96"

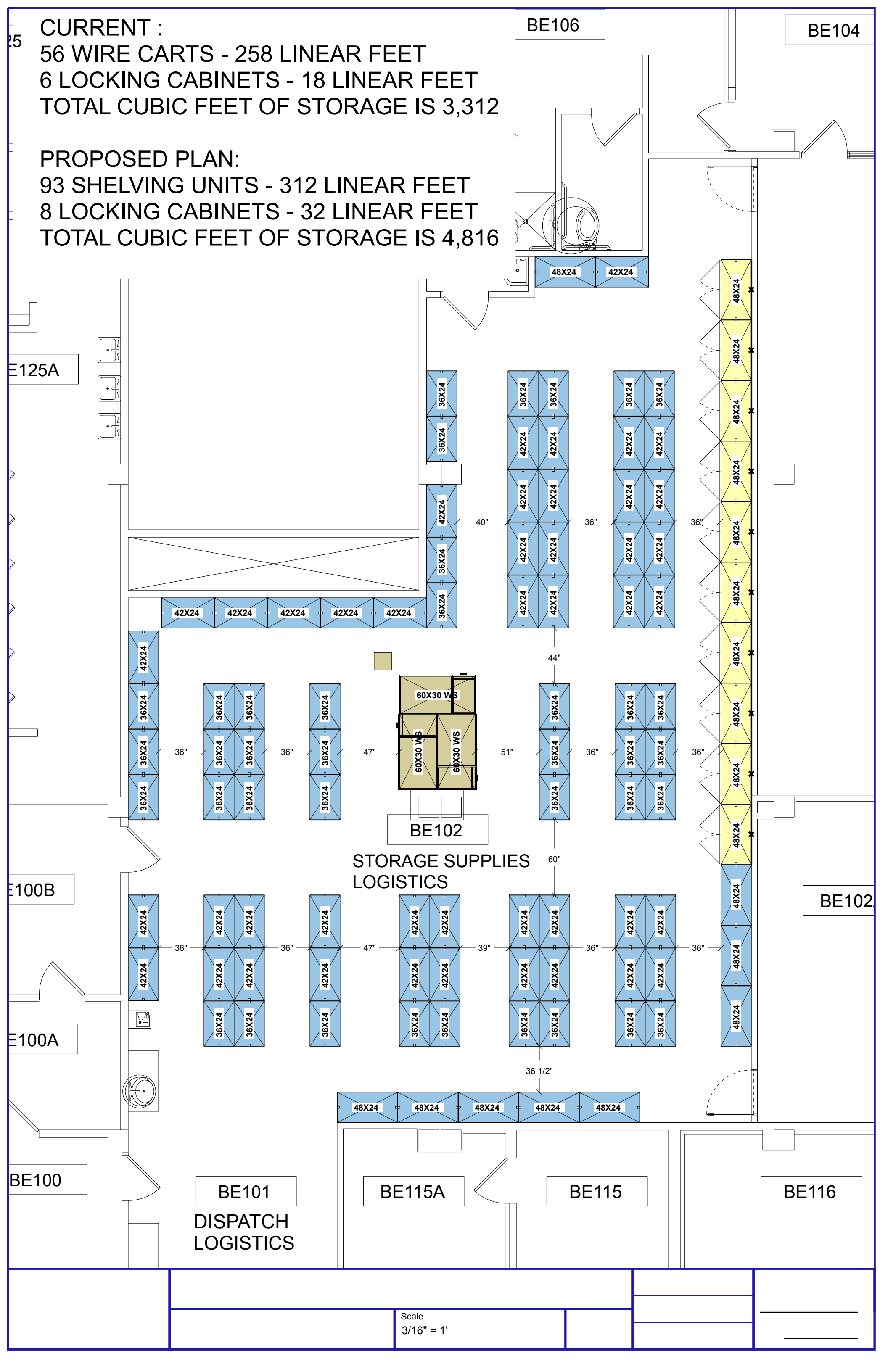
13 13/16"

13 23/32"

Scale
3/8" = 1'

CURRENT :
56 WIRE CARTS - 258 LINEAR FEET
6 LOCKING CABINETS - 18 LINEAR FEET
TOTAL CUBIC FEET OF STORAGE IS 3,312

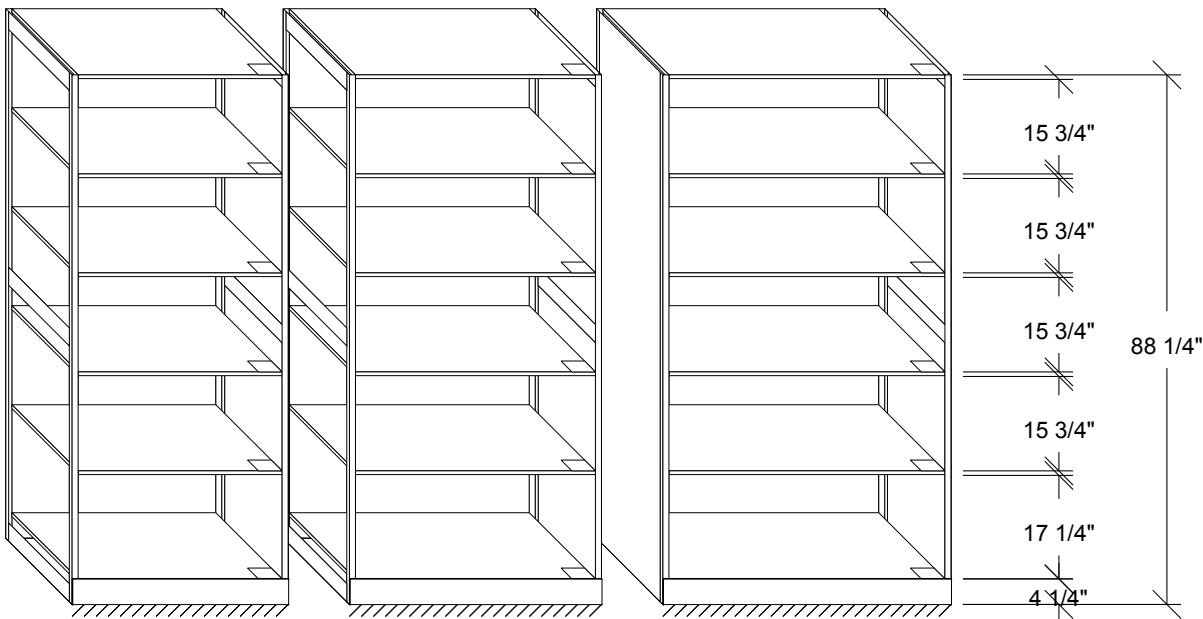
PROPOSED PLAN:
93 SHELVING UNITS - 312 LINEAR FEET
8 LOCKING CABINETS - 32 LINEAR FEET
TOTAL CUBIC FEET OF STORAGE IS 4,816



STORAGE SUPPLIES LOGISTICS ELEVATIONS



STORAGE SUPPLIES & LOGISTICS ELEVATION
36-48" WIDE X 24" DEEP



36X24

42X24

48X24

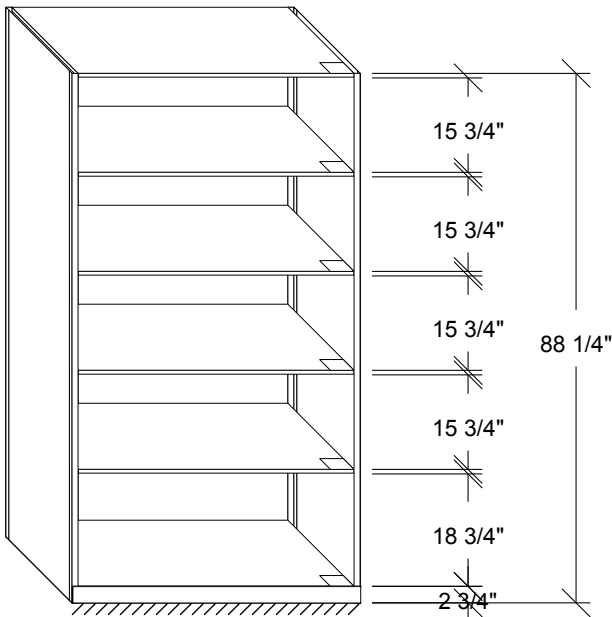
Quantity - 38

Quantity - 44

Quantity - 6

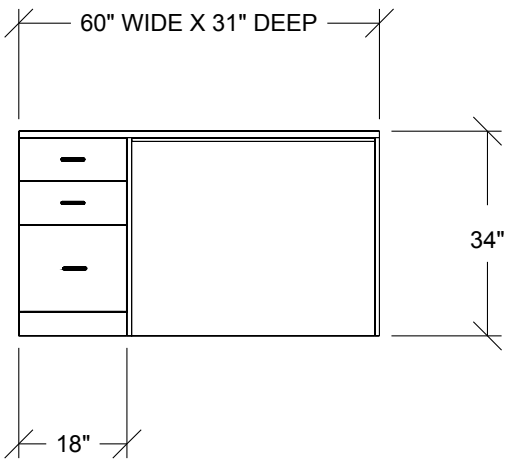


STORAGE SUPPLIES & LOGISTICS ELEVATION
48" WIDE X 24" DEEP W/ LOCKING HINGED DOORS



48X24

Quantity - 10



Quantity - 3



Scale
3/8" = 1'