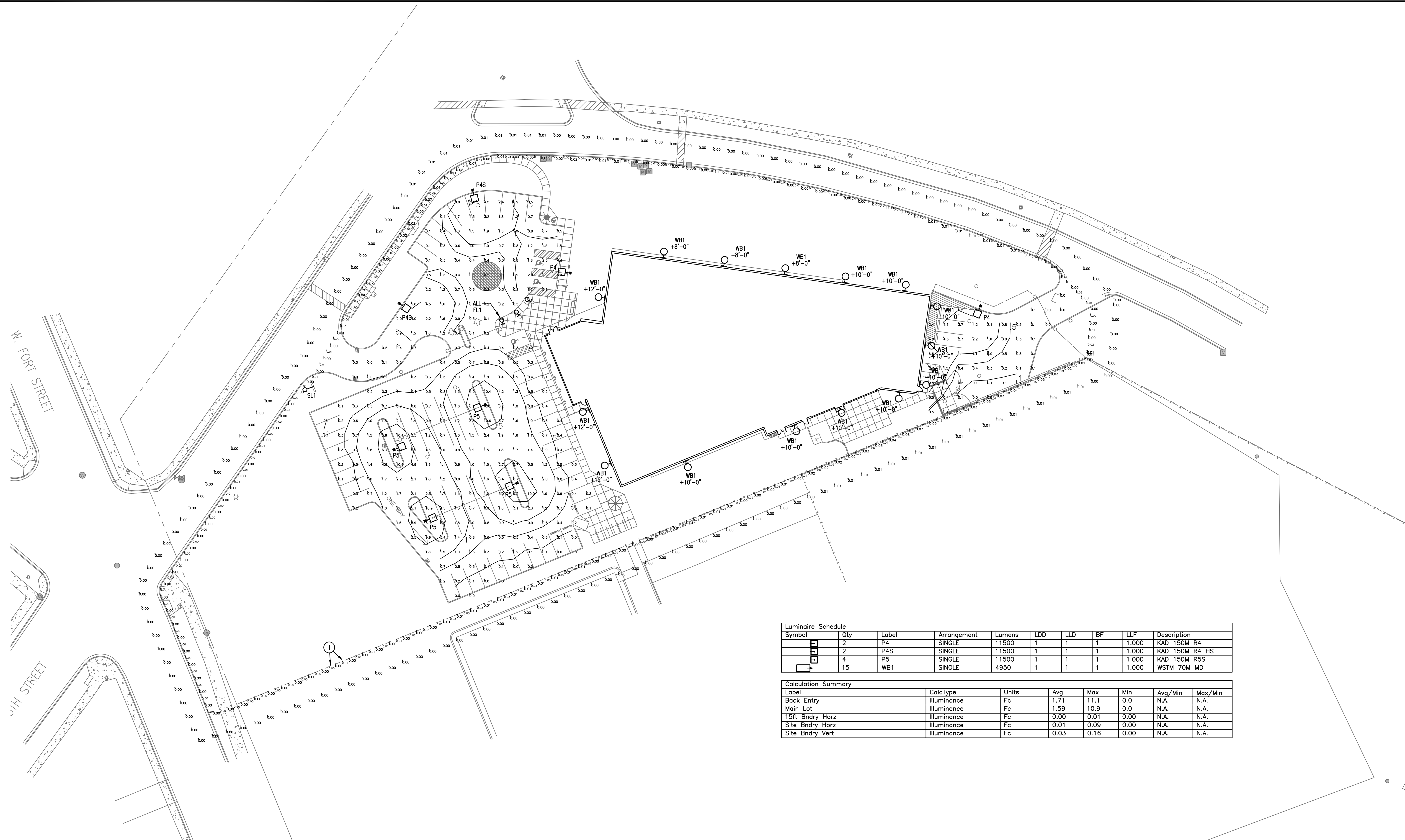


three inches = one foot
one and one half inches = one foot
one inch = one foot
three quarters inch = one foot
one half inch = one foot
three eighths inch = one foot
one quarter inch = one foot
one eighth inch = one foot



Luminaire Schedule									
Symbol	Qty	Label	Arrangement	Lumens	LDI	LLD	BF	LLF	Description
	2	P4	SINGLE	11500	1	1	1	1.000	KAD 150M R4
	2	P4S	SINGLE	11500	1	1	1	1.000	KAD 150M R4 HS
	4	P5	SINGLE	11500	1	1	1	1.000	KAD 150M R5S
	15	WB1	SINGLE	4950	1	1	1	1.000	WSIM 70M MD

Calculation Summary							
Label	CalcType	Units	Avg	Max	Min	Avg/Min	Max/Min
Back Entry	Illuminance	Fc	1.71	11.1	0.0	N.A.	N.A.
Main Lot	Illuminance	Fc	1.59	10.9	0.0	N.A.	N.A.
15ft Bndry Horz	Illuminance	Fc	0.00	0.01	0.00	N.A.	N.A.
Site Bndry Horz	Illuminance	Fc	0.01	0.09	0.00	N.A.	N.A.
Site Bndry Vert	Illuminance	Fc	0.03	0.16	0.00	N.A.	N.A.

SITE PHOTOMETRIC PLAN
SCALE: 1"=30'-0"

KEYNOTES:	GENERAL SHEET NOTES:
<p>1. VALUES OF SMALL SIZE FONT INDICATE VERTICAL ILLUMINANCES MEASURED TOWARD CENTER OF SITE (TYPICAL).</p>	<p>1. SEE ELECTRICAL GENERAL NOTES ON SHEET E-103. 2. PHOTOMETRIC DATA BASED UPON INITIAL LUMEN OUTPUT, DIRECT ILLUMINANCE ONLY, INTERREFLECTIONS FROM SURFACES NOT CONSIDERED. 3. LIGHTING SHOWN FOR PHOTOMETRIC REFERENCE ONLY, REFER TO SHEETS E-101 AND E-110L FOR CIRCUITING AND EXACT LOCATIONS.</p>

RECORD DRAWINGS -- JULY 28, 2009
FULLY SPRINKLERED

THESE RECORD DOCUMENTS HAVE BEEN PREPARED BASED ON INFORMATION PROVIDED BY OTHERS. ZGA ARCHITECTS AND PLANNERS, CHARTERED, AND THEIR CONSULTANTS, HAVE NOT VERIFIED THE ACCURACY AND/OR COMPLETENESS OF THIS INFORMATION AND SHALL NOT BE RESPONSIBLE FOR ANY ERRORS OR OMISSIONS THAT MAY BE INCORPORATED AS A RESULT OF ERRONEOUS INFORMATION PROVIDED BY OTHERS.

CONSULTANTS: EIDAM AND ASSOCIATES CONSULTING ENGINEERS 720 E. PARK BOULEVARD, SUITE 250 BOISE, IDAHO 83712-7157 PHONE (208)345-7157, FAX (208)345-7173 email: cades@eidam-asso.com EIDAM & ASSOCIATES PROJECT NUMBER 08-034RD		RECORD DOCUMENTS THESE DOCUMENTS HAVE BEEN PREPARED BASED ON INFORMATION PROVIDED BY THE CONTRACTOR. EIDAM & ASSOCIATES HAVE NOT VERIFIED THE ACCURACY OF THIS INFORMATION AND SHALL NOT BE RESPONSIBLE FOR ANY ERRORS OR OMISSIONS WHICH MAY BE INCORPORATED HEREIN AS A RESULT. Date: JULY 2009 By: GLJ Eidam And Associates 720 E. Park Boulevard, Suite 250 Boise, Idaho 83712 208-345-7157 Copyright 2009 - Eidam and Associates		ARCHITECT: ZGA ARCHITECTS AND PLANNERS, CHARTERED 565 W. MYRTLE STREET, SUITE 225 BOISE, IDAHO 83702-7606 (208) 345-8872 CONTACT: LOWELL ALSETH, AIA		Drawing Title SITE PHOTOMETRIC PLAN Approved Project Director	Project Title Veterans Benefits Administration Boise Regional Office Building Location Boise, Idaho Date January 22, 2009 Checked GLJ/JMH Drawn KGL	Project Number 347 - VB3018 Building Number RO Drawing Number E-102 Dwg. 3 of --	Office of Facilities Management
---	--	--	--	--	--	---	--	---	--