

SHEET LIST	
F-001	FIRE PROTECTION NOTES AND SYMBOLS
F-121	FIRE PROTECTION - SECOND FLOOR
F-131	FIRE PROTECTION - THIRD FLOOR

GENERAL NOTES

1. FIRE PROTECTION CONTRACTOR SHALL BE RESPONSIBLE FOR THE FOLLOWING:
 - A. REMOVE DISTRIBUTION PIPING BACK TO MAIN. REDISTRIBUTE AS REQUIRED TO ACCOMMODATE NEW FLOOR PLAN.
 - B. PROVIDE NEW HEADS AS REQUIRED TO ACCOMMODATE NEW FLOOR PLAN. EXISTING HEADS SHALL NOT BE REUSED. ALL NEW HEADS ARE TO BE FM-APPROVED, QUICK RESPONSE TYPE.
 - C. FIRE SPRINKLER HEADS SHALL BE LOCATED IN CENTER OF TILE BOTH DIRECTIONS WHEN LOCATED IN LAY-IN CEILINGS. FIRE SPRINKLER HEADS SHALL BE LOCATED IN SYMMETRICAL PATTERNS IN ROOMS WITH HARD CEILINGS.
 - D. COORDINATE SPRINKLER HEAD LOCATIONS WITH ALL CEILING COMPONENTS INCLUDING ELECTRICAL & MECHANICAL COMPONENTS AND PATIENT LIFTS.
2. FIRE PROTECTION CONTRACTOR SHALL BE RESPONSIBLE FOR THE SPRINKLER HEAD LAYOUTS, CALCULATIONS, AND SEALED ENGINEERING DRAWINGS AS FOLLOWS:
 - A. DELEGATED DESIGN: DESIGN SPRINKLER SYSTEM (S), INCLUDING COMPREHENSIVE ENGINEERING ANALYSIS BY A QUALIFIED PROFESSIONAL ENGINEER OR HIGH LEVEL TECHNICAL USING PERFORMANCE REQUIREMENTS AND DESIGN CRITERIA OF NFPA 13.
 - B. OBTAIN COPY OF FIRE-HYDRANT FLOW TEST RECORDS OR CONTACT LOCAL WATER AND/OR FIRE DEPARTMENTS TO PERFORM A FIRE-HYDRANT FLOW TEST. INCLUDE FLOW TEST RESULTS FOR EACH RISER WITH HYDRAULIC CALCULATIONS. INCLUDE A 10% SAFETY FACTOR IN HYDRAULIC CALCULATIONS.
 - C. SPRINKLER SYSTEM SHALL BE APPROVED BY AUTHORITIES HAVING JURISDICTION.
 - D. SHOP DRAWINGS: FOR WET-PIPE SPRINKLER SYSTEMS, INCLUDE PLANS, ELEVATIONS, SECTIONS, DETAILS, AND ATTACHMENTS TO OTHER WORK.
 - E. DELEGATED DESIGN SUBMITTAL: FOR ALL SPRINKLER SYSTEMS, INCLUDING ANALYSIS DATA SIGNED AND SEALED BY THE QUALIFIED PROFESSIONAL ENGINEER OR HIGH LEVEL TECHNICAL. THE PROFESSIONAL ENGINEER SHALL BE LICENSED IN THE STATE OF KANSAS.
 - F. COORDINATION DRAWINGS: SPRINKLER SYSTEMS, DRAWN TO SCALE, ON WHICH THE ELECTRICAL, PLUMBING, HVAC, STRUCTURAL AND OTHER BUILDING SYSTEMS ARE SHOWN AND COORDINATED WITH EACH OTHER, USING INPUT FROM INSTALLERS OF THE ITEMS INVOLVED.
 - G. APPROVED SPRINKLER PIPING DRAWINGS: WORKING PLANS, PREPARED ACCORDING TO NFPA 13, THAT HAVE BEEN APPROVED BY AUTHORITIES HAVING JURISDICTION INCLUDING HYDRAULIC CALCULATIONS.
3. EXISTING FIRE PROTECTION PIPING AND SPRINKLER HEADS ARE BASED ON EXISTING DRAWINGS AND ARE SHOWN FOR INFORMATION ONLY. FP CONTRACTOR RESPONSIBLE FOR VERIFYING EXISTING CONDITIONS BEFORE BEGINNING WORK.
4. THIS CONTRACTOR IS RESPONSIBLE FOR SUBMITTING FULL COORDINATION AND LAYOUT DRAWINGS PER FIRE PROTECTION SPEC SECTION. COORDINATION SHOULD BE COMPLETED WITH ALL TRADES INCLUDED. CONSTRUCTION SHALL NOT BEGIN UNTIL COORDINATION DRAWINGS HAVE BEEN REVIEWED BY THE ENGINEER AND COR.

SEISMIC BRACING NOTES

SOME MECHANICAL AND PLUMBING COMPONENTS OF THIS BUILDING REQUIRE SEISMIC BRACING. IT IS THE RESPONSIBILITY OF THIS CONTRACTOR AND THE GC TO ENGAGE A SEISMIC DESIGN ENGINEER TO DETERMINE AND DESIGN THE REQUIRED BRACING FOR EACH SYSTEM.

SYSTEMS REQUIRING BRACING INCLUDE, BUT ARE NOT LIMITED TO, THE FOLLOWING:

1. ALL LIFE-SAFETY COMPONENTS INCLUDING FIRE PROTECTION SYSTEMS.
2. COMPONENTS WEIGHING MORE THAN 400 POUNDS.
3. COMPONENTS WITH A CENTER OF MASS GREATER THAN 4 FEET ABOVE FLOOR LEVEL AND WEIGHING MORE THAN 20 POUNDS (E.G. TERMINAL UNITS).
4. DISTRIBUTION SYSTEMS WEIGHING MORE THAN 5 POUNDS PER FOOT. (E.G. 12x12, 22 GAUGE, SHEET STEEL DUCTWORK AND CHILLED, HEATING, DOMESTIC HOT, AND DOMESTIC COLD WATER PIPING LARGER THAN 1 1/2".

FLEXIBLE CONNECTIONS ARE REQUIRED BETWEEN ALL COMPONENTS AND ASSOCIATED DUCTWORK, PIPING, AND CONDUITS.

THE FOLLOWING COMPONENTS ARE NOT REQUIRED TO BE BRACED:

- ### 1. PLUMBING FIXTURES

THE CONTRACTOR SHALL PROVIDE ALL COMPONENT SUBMITTALS WITH COMPONENT WEIGHTS TO SEISMIC DESIGN ENGINEER FOR USE IN BRACING DESIGN.

BRACING SHALL BE DESIGNED TO MEET ASCE 7 AND NFPA 13 BRACING REQUIREMENTS. REFER TO ASCE 7 CHAPTER 13 FOR MORE INFORMATION ON SYSTEMS REQUIRED TO BE BRACED.

[illegible]

CONSULTANTS:

03 02



ARCHITECT/ENGINEERS:

m::HFG
ARCHITECTURE
117 PIERCE ST, SUITE 110
SIOUX CITY, IOWA
142 N. MOSELY ST
WICHITA, KANSAS



Drawing Title

FIRE PROTECTION NOTES AND SYMBOLS

Project Title

RENOVATE WARDS FOR PATIENT PRIVACY PHASE 1, B1

Project Number

89A7-17-203

Location

Robert J. Dole VA Medical Center

Checked

BOU

Drawn

AP

Drawing Number

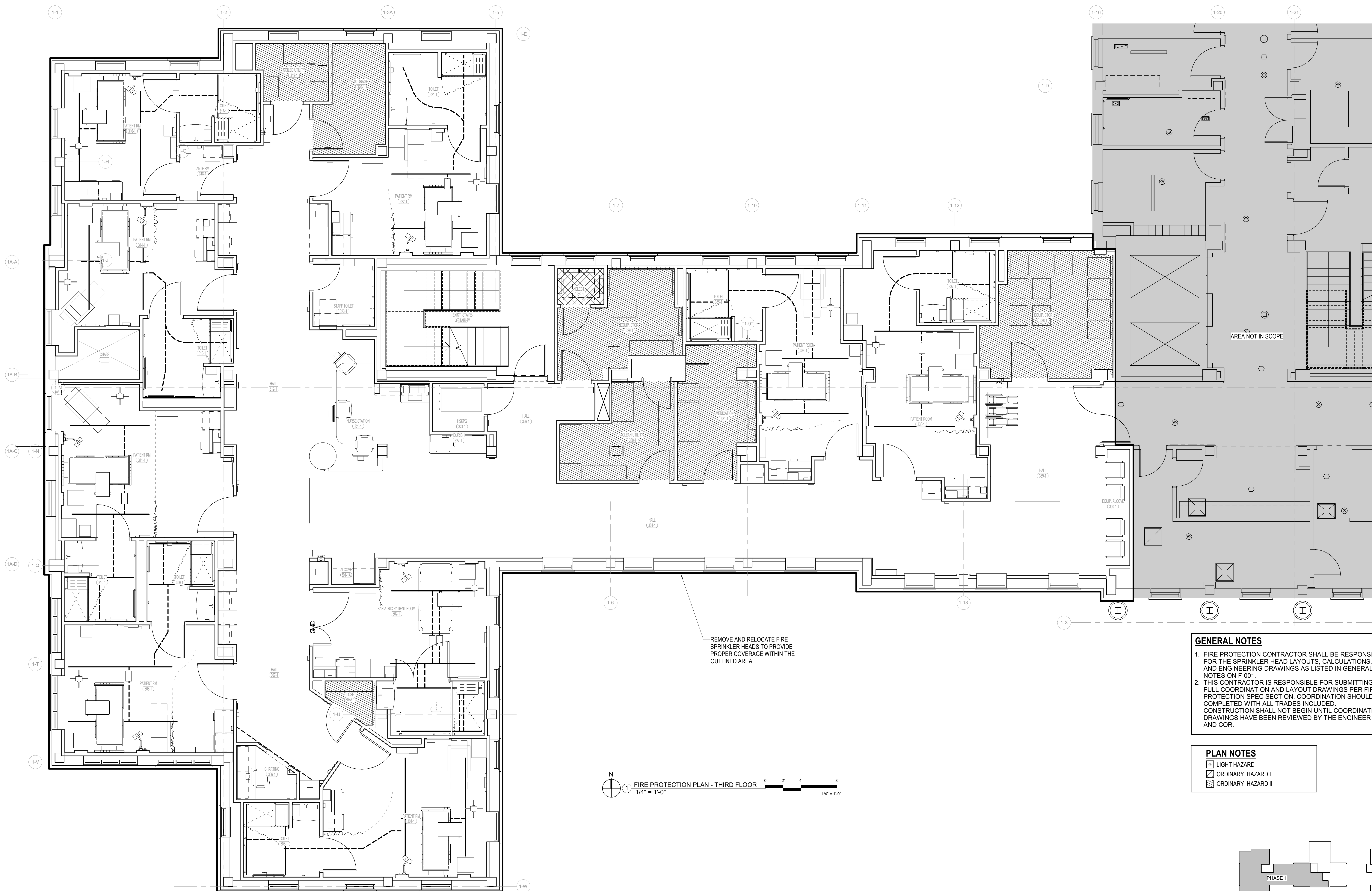
7 224

Office of
Construction
and Facilities
Management



Department of
Veterans Affairs



Project Number 589A7-17-203	Office of Construction and Facilities Management
Drawing Number F-121	 Department of Veterans Affairs

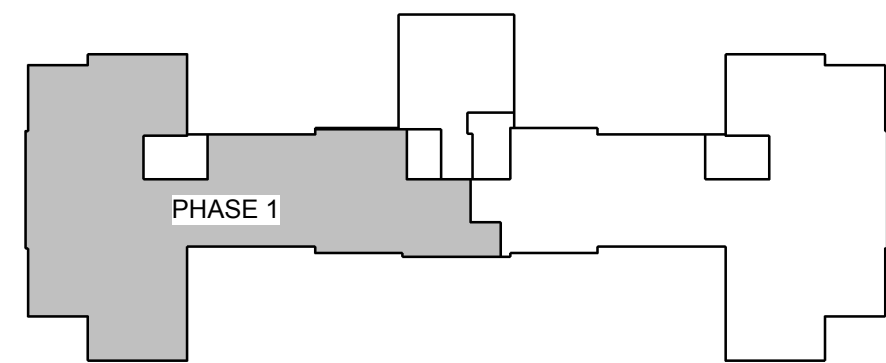


GENERAL NOTES

1. FIRE PROTECTION CONTRACTOR SHALL BE RESPONSIBLE FOR THE SPRINKLER HEAD LAYOUTS, CALCULATIONS, AND ENGINEERING DRAWINGS AS LISTED IN GENERAL NOTES ON F-001.
2. THIS CONTRACTOR IS RESPONSIBLE FOR SUBMITTING FULL COORDINATION AND LAYOUT DRAWINGS PER FIRE PROTECTION SPEC SECTION. COORDINATION SHOULD BE COMPLETED WITH ALL TRADES INCLUDED. CONSTRUCTION SHALL NOT BEGIN UNTIL COORDINATION DRAWINGS HAVE BEEN REVIEWED BY THE ENGINEER AND COR.

PLAN NOTES

- LIGHT HAZARD
 ORDINARY HAZARD I
 ORDINARY HAZARD II

[illegible]

CONSULTANTS:



ARCHITECT/ENGINEERS:

m::HFG
ARCHITECTURE
117 PIERCE ST. SUITE 110
SIOUX CITY, IOWA
142 N. MOSELEY ST.
WICHITA, KANSAS



Drawing Title

FIRE PROTECTION - THIRD FLOOR

Project Title

RENOVATE WARDS FOR PATIENT
PRIVACY PHASE 1, B1

Location
Robert J. Dole VA Medical Center

Date 04/26/2018

Checked
BOH

Drawn
AR

Project Number
589A7-17-203

Drawing Number

F-131

Office of
Construction
and Facilities
Management

